



# 2021 REDISTRICTING

[www.ocgov.com/redistricting](http://www.ocgov.com/redistricting)

**Presented By:**

Nicole M. Walsh, Senior Assistant County Counsel/Mark Servino, Supervising  
Deputy County Counsel

Jessica Witt, Director, Government & Community Relations

Deborah Diep, Director, Center for Demographic Research

Molly Nichelson, Public Information Manager

County of Orange



# TODAY'S AGENDA

- ➔ Welcome and Introductory Remarks
- ➔ PowerPoint Presentations & Redistricting Overview by County Staff
- ➔ Public Comments
  - ▶ In-person & phone comments.
    - Virtual attendees – <https://www.facebook.com/ocgov>.
    - Virtual comments – (844) 291-4185, access code 5541122.
  - ▶ Speakers are allotted three minutes.
- ➔ Event Conclusion
  - ▶ Workshops and presentations will be posted at [www.ocgov.com/redistricting](http://www.ocgov.com/redistricting).

## WHAT IS REDISTRICTING?

- ➔ Redistricting is the regular process of adjusting the lines of voting districts in accordance with population shifts.
- ➔ Different levels of government have responsibilities for redistricting following each decennial Census to meet strict requirements for population equality and voting rights protections:
  - ▶ State – Responsible for redrawing Congressional and State legislative districts.
  - ▶ Counties – Responsible for redrawing Supervisorial districts.
  - ▶ Cities – Responsible for redrawing City Council districts, if applicable.

# WHY REDISTRICTING IS IMPORTANT

- ➔ Board of Supervisors oversees many services and resources in community.
  - ▶ Public health and social services.
  - ▶ Public safety.
  - ▶ Municipal services to unincorporated areas and contract cities.
- ➔ Periodic redistricting and redrawing of the boundaries are important to:
  - ▶ Rebalance district populations.
  - ▶ Ensure the Board of Supervisors reflects the County's diverse population.
  - ▶ Enable constituents to vote for the Supervisor of their choice.

## DELAYS IN RECEIPT OF CENSUS REDISTRICTING DATA

- COVID-19 pandemic created delays and extended data collection by the U.S. Census Bureau to October 2020.
  - ▶ *Four months later than in previous Census efforts.*
  
- U.S. Census Bureau plans to release Census redistricting data (P.L. 94-171) to the States by September 30, 2021.
  - ▶ *Five months later than in previous redistricting efforts.*
    - P.L. 94-171 legacy-format data expected by August 16, 2021, but format requires additional processing.
    - State needs 30 days to adjust data for incarcerated individuals.
  
- Delays impact the redistricting timeline for everyone.



# THE ROAD TO MAP APPROVAL



# DEVELOPMENT AND CONSIDERATION OF MAPS

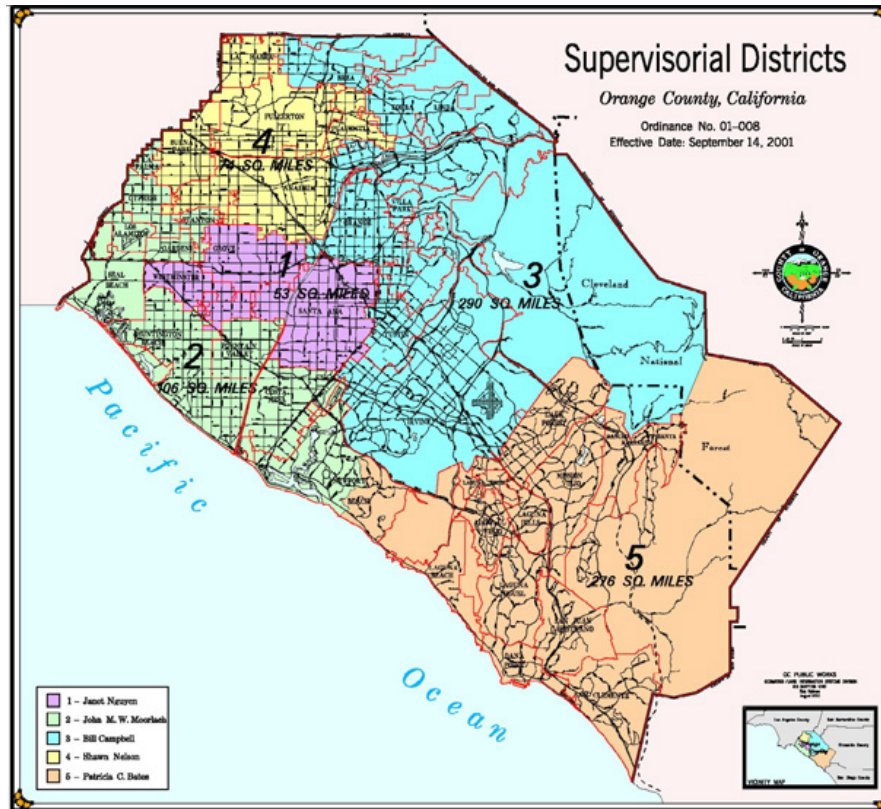
- October 4-15: Estimated public submission period of proposed maps based on receipt from Statewide Database of P.L. 94-171 Redistricting Data adjusted for incarcerated individuals by September 30.
- Nov. 2: Draft map(s) presented at a public hearing (Board meeting).
- Nov. 9: Public Hearing (Board meeting) regarding any map revisions or map selection.
- Nov. 16: Public Hearing (Board meeting) to select map for preparation of ordinance, if needed.

## BOARD ADOPTION OF MAPS

- Nov. 17- Dec. 1: County staff prepares formal ordinance based on map selected by the Board.
- December 7: Board considers first reading of redistricting ordinance/maps.
- December 14: Board considers second reading of redistricting ordinance/maps.
- December 15: Statutory deadline for Board of Supervisors to approve redistricting ordinance maps for June 7, 2022 Primary Election.
- June 7, 2022: Primary Election with updated maps.



# CREATING MAPS THAT COMPLY WITH THE LAW



## LEGAL CONSIDERATIONS: SUBSTANTIALLY EQUAL POPULATION

- Unlike Congressional districts, local electoral districts do not require perfect equality—some deviation acceptable to serve valid governmental interests.
- Total deviation between districts of less than 10 percent presumptively constitutional.
- AB 849 requires population to be adjusted to count incarcerated people at their home address.

## LEGAL CONSIDERATIONS (*CONTINUED*): MANDATORY CRITERIA

- ➔ Elections Code § 21500 requires that the Board adopt Supervisorial district boundaries using the following criteria in order of priority:
  1. Geographically contiguous.
  2. Maintain geographic integrity of neighborhoods or local community of interest (share a common social or economic interest).
  3. Respect geographic integrity of city or Census-designated area and minimize division.
  4. Make district boundaries easily identifiable and understandable by residents.
  5. Supervisorial districts shall be drawn to encourage geographical compactness.
- ➔ Board also “...shall not adopt Supervisorial district boundaries for the purpose of favoring or discriminating against a political party.”

## **LEGAL CONSIDERATIONS (*CONTINUED*): VOTING RIGHTS ACT OF 1965**

- ➔ Board of Supervisors must adopt a map that complies with Section 2 of the Voting Rights Act, which prohibits voting practices that result in a denial or abridgement of the right of any citizen of the United States to vote on account of race or color.
  
- ➔ A violation of Section 2 is established if, “...based on the totality of circumstances,” the challenged electoral process is “...not equally open to participation by members of a [racial minority group] in that its members have less opportunity than other members of the electorate to participate in the political process and to elect representatives of their choice.”

## COMMUNITIES OF INTEREST

- A “community of interest” is a population that shares common social or economic interests that should be included within a single Supervisorial district for purposes of its effective and fair representation.
- Examples include culture, areas in which the people share similar living standards, use the same transportation facilities, have similar work opportunities or have access to the same media.
- People can belong to multiple communities of interest.
- Community testimony is invaluable, but base decision on quality of claim, not number of people making it.

## DEFINING COMMUNITIES OF INTEREST

- ➔ Oral Testimony - Personal stories are powerful as well as providing historical context.
- ➔ Written Testimony - A written description can be used to tell your community's story.
- ➔ Community Issues - Often communities get involved in redistricting because they want to organize for or against a common issue.
- ➔ Boundary Maps - Create a map of your neighborhood or area.
  - ▶ County has procured software that will allow public to draw and submit proposed maps directly.

## PUBLIC PARTICIPATION KIT

- ➔ The County is soliciting input from the public on the redistricting of the Supervisorial districts
- ➔ Public comments at the public hearings
- ➔ Three forms to provide written input:
  - ▶ Idea & Comment form
  - ▶ Online mapping software
  - ▶ Excel table with split census tract assignments
- ➔ Map proposals must be submitted by October 15
- ➔ After data is released, kit will be available online for download at <https://cob.ocgov.com/2021-redistricting-kit>



## County of Orange 2021 Redistricting Supervisorial District Idea and Comment Form

Name: (required) \_\_\_\_\_

### Optional Information<sup>1</sup>

City/County: \_\_\_\_\_

Phone Number: \_\_\_\_\_

Email: \_\_\_\_\_

Organization (if any): \_\_\_\_\_

*Please write any ideas or comments you would like to share with the County of Orange on redistricting. If you are sharing ideas about proposed district boundaries or communities of interest (including, but not limited to information on boundaries of your community whether defined by city, school area or other criteria, and what bonds your community, please include descriptive information about the area in mind, such as streets or landmarks. The comments you provide will be posted online as part of the public comment and public input process.*

*A "community of interest" is a population that shares common social or economic interests that should be included within a single supervisorial district for purposes of its effective and fair representation. Communities of interest do not include relationships with political parties, incumbents, or political candidates.*

*Please use additional pages if you require more room to write.*

*My ideas/comments are as follows:*

<sup>1</sup> If this information is provided, the County may use it to contact you with questions. The information may be subject to disclosure under the Public Records Act

*Please continue on additional pages if you need more space.*

Submit to:

- Email: [redistricting@ocgov.com](mailto:redistricting@ocgov.com) OR
- Mail paper copy to:  
Attn: 2021 Redistricting Team  
333 West Santa Ana Blvd., 3rd Floor  
Santa Ana, CA 92701

Comments may also be submitted via the online web form  
at <https://www.ocgov.com/redistricting/feedback>

<https://cob.ocgov.com/form/idea-comment-form-county-of-oran>

## Public Participation Kit: Idea & Comment Form

1. Fill out the  
online web form
2. Take a picture  
or scan and  
email to  
[redistricting@ocgov.com](mailto:redistricting@ocgov.com)
3. Submit during a  
public hearing  
or workshop





## PUBLIC PARTICIPATION KIT: EXCEL FILE

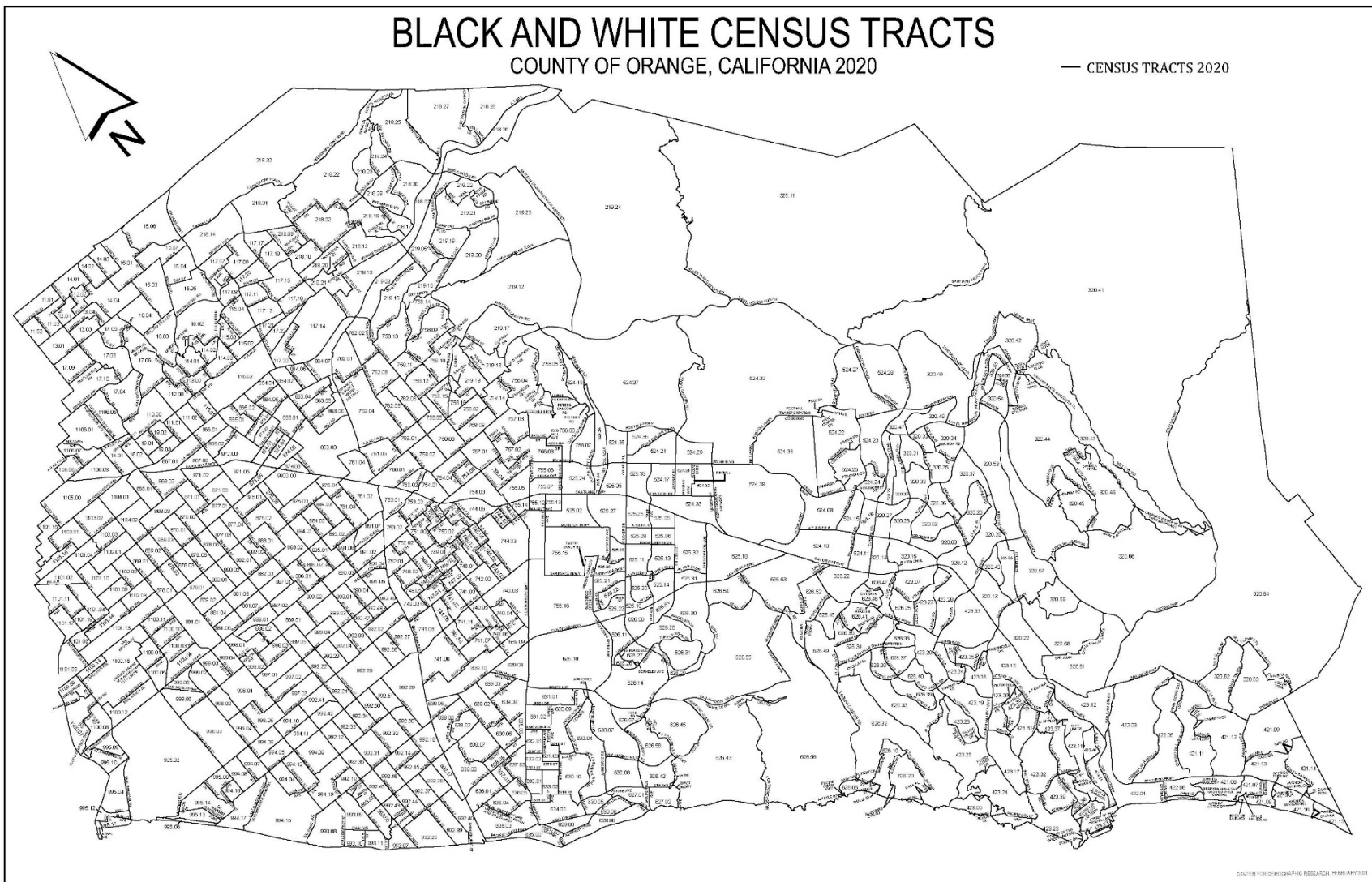
- ➔ Automatically tabulates population totals for each district as you assign the district number.
- ➔ Contains 5 worksheets:
  - ▶ Instruction sheet
  - ▶ Author information
  - ▶ Assignments
  - ▶ Summary
  - ▶ Blank Reference Map
- ➔ Use PDF maps for reference.



## BLACK AND WHITE CENSUS TRACTS

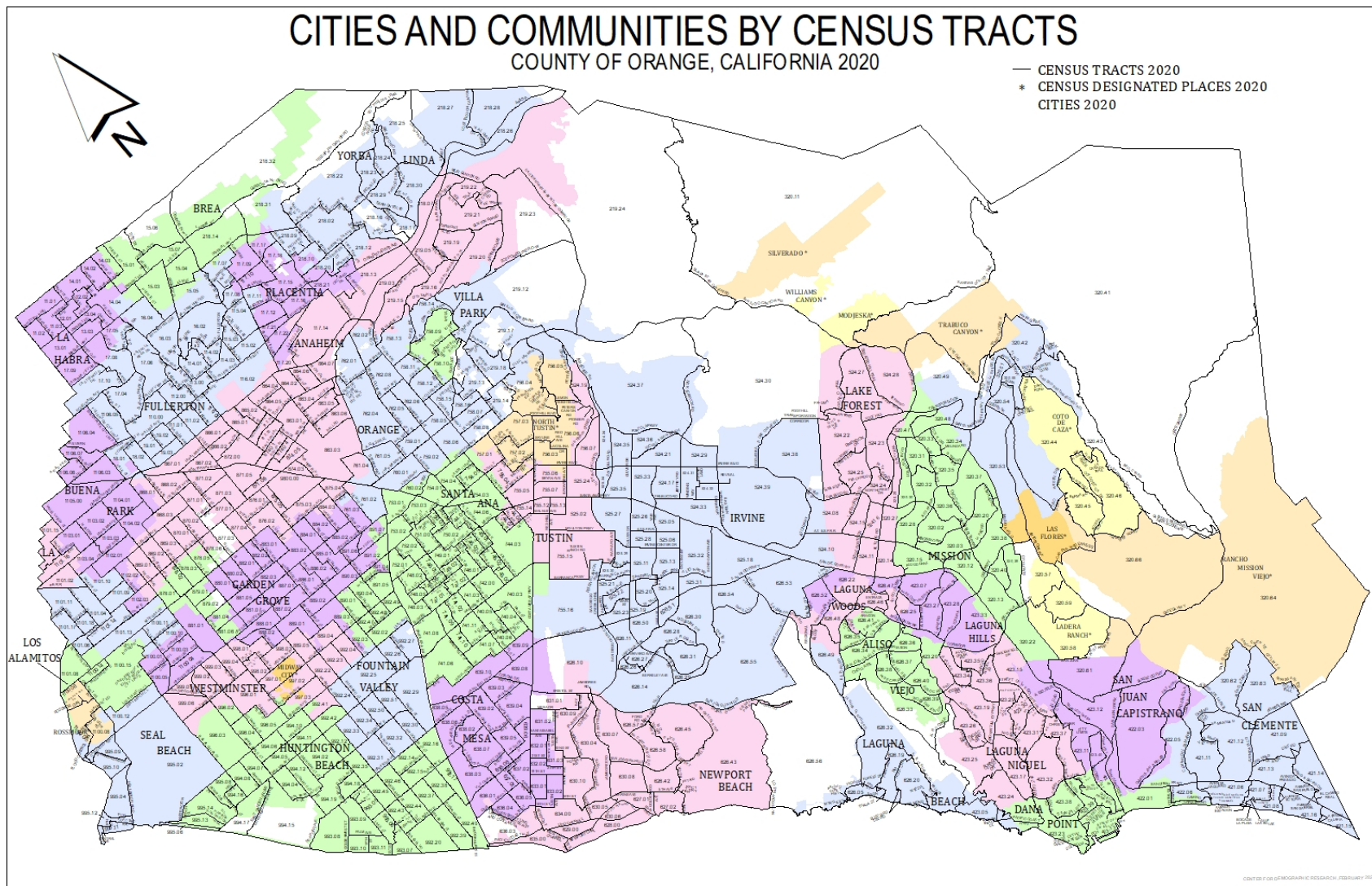
COUNTY OF ORANGE, CALIFORNIA 2020

— CENSUS TRACTS 2020

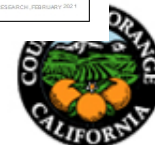


COUNTY OF ORANGE RESEARCH, FEBRUARY 2021

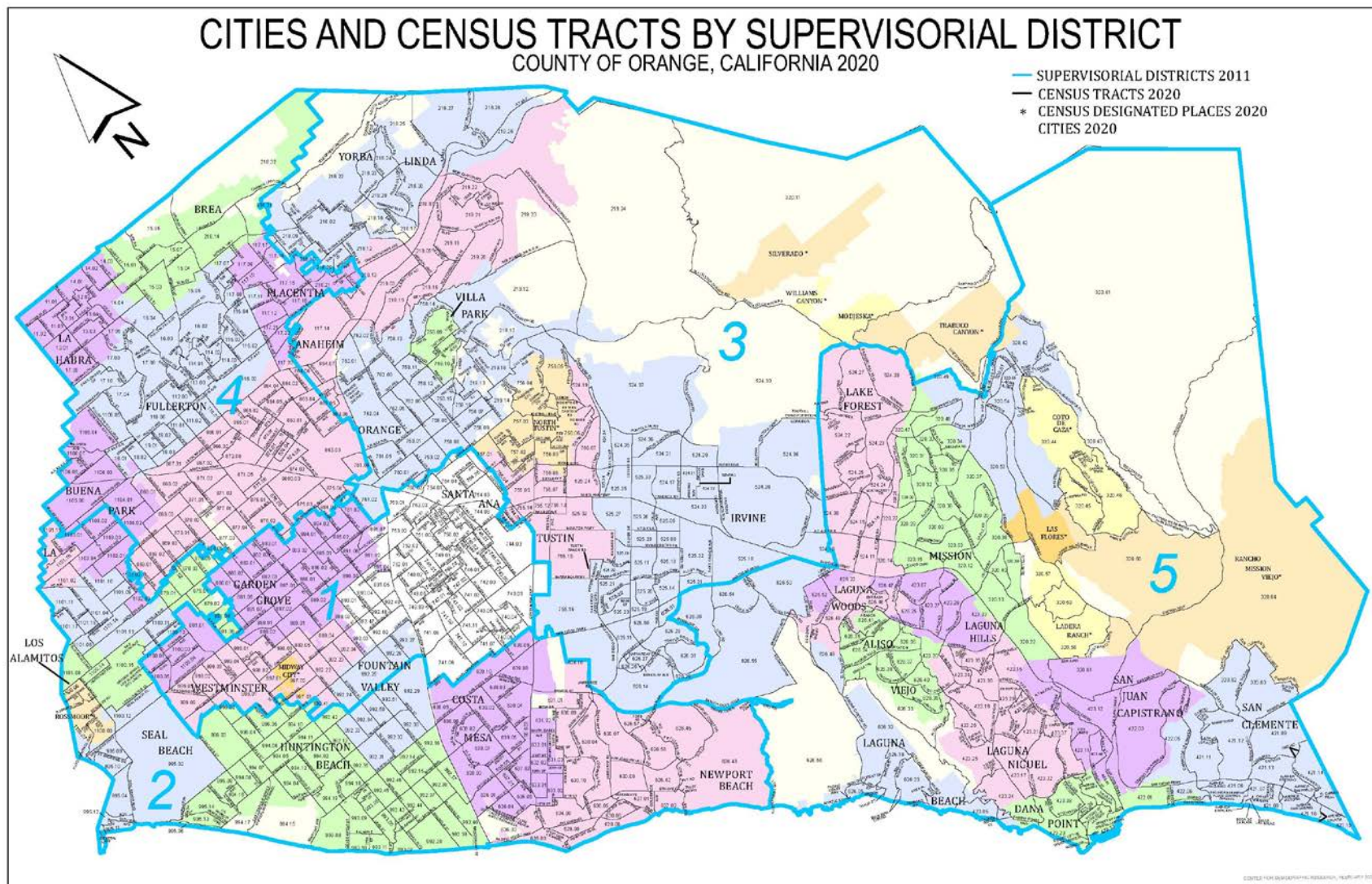




COURTESY OF THE COUNTY OF ORANGE, CALIFORNIA, FEBRUARY 2021







COPYRIGHT 2020 BY ORANGE COUNTY, CALIFORNIA. ALL RIGHTS RESERVED.



## PUBLIC INVOLVEMENT

- Participate in public workshops and meetings.
- Provide feedback on communities of interest.
- Create a draft map and/or provide comments on draft map(s).
- Visit [www.ocgov.com/redistricting](http://www.ocgov.com/redistricting) website.
- Submit comments to [redistricting@ocgov.com](mailto:redistricting@ocgov.com).
- Submit comments via online form:  
<https://cob.ocgov.com/form/idea-comment-form-county-of-oran>
- Email [redistricting@ocgov.com](mailto:redistricting@ocgov.com) to be receive redistricting updates by email.
- Submit comments via phone at (714) 834-6000.

## HOW TO FIND OUT MORE

- Visit [www.ocgov.com/redistricting](http://www.ocgov.com/redistricting) website.
- Email [redistricting@ocgov.com](mailto:redistricting@ocgov.com) to be receive redistricting updates by email.
- Phone Number: (714) 834-6000.

# PUBLIC COMMENTS

## ➔ Public Comments

- ▶ In-person & phone comments.
  - Virtual attendees – <https://www.facebook.com/ocgov>.
  - Virtual comments – (844) 291-4185, access code 5541122.
- ▶ Speakers are allotted three minutes.
- ▶ Given the volume of public comments that may occur in on the County's Facebook account, we will not be able to answer questions in real time.

➔ Comments and questions may be emailed to us at [redistricting@ocgov.com](mailto:redistricting@ocgov.com) or leave a voicemail message at (714) 834-6000.





## CITIES AND COMMUNITIES BY CENSUS TRACTS

COUNTY OF ORANGE, CALIFORNIA 2020

— CENSUS TRACTS 2020

\* CENSUS DESIGNATED PLACES 2020

CITIES 2020

