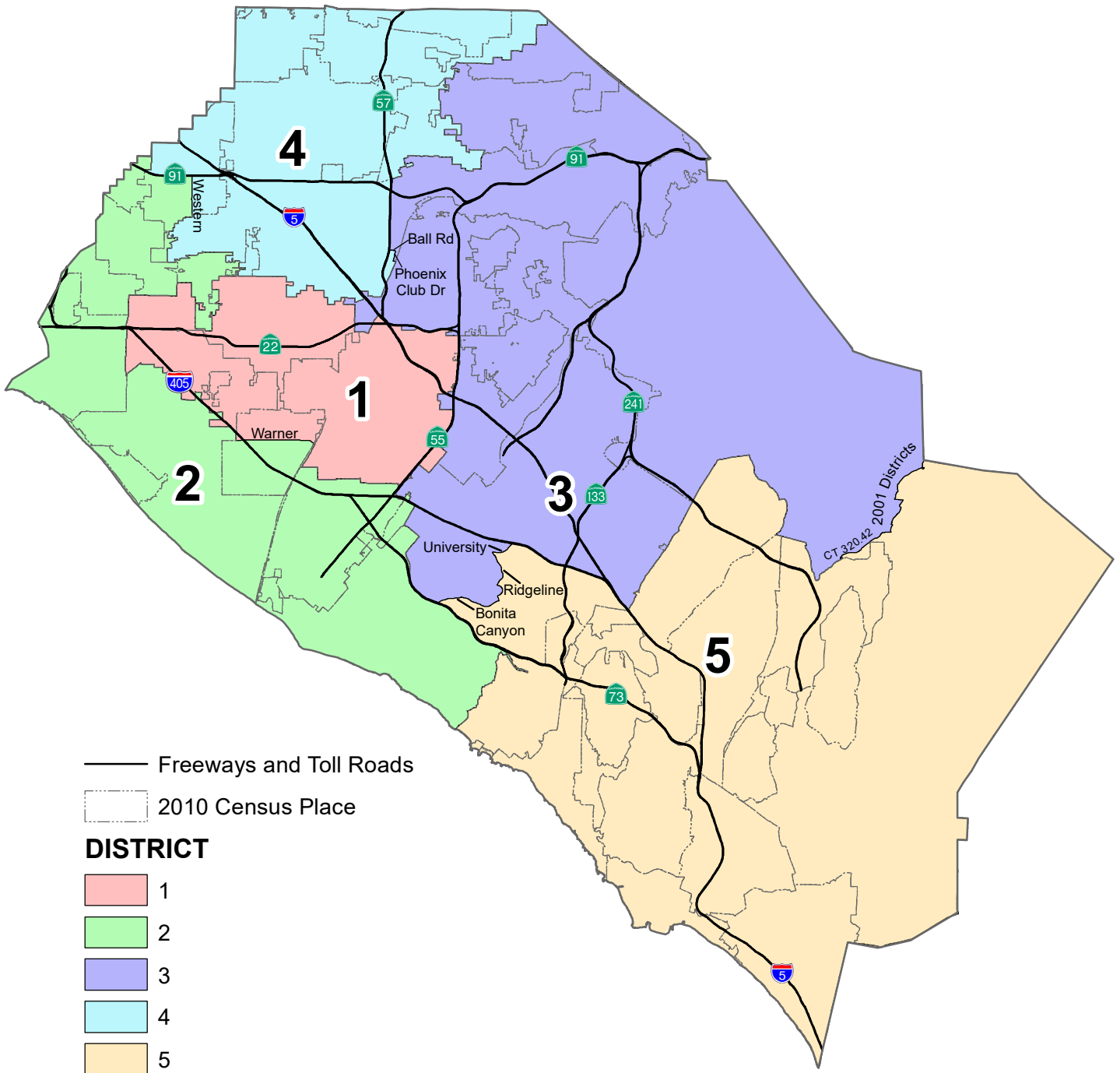


County of Orange 2021 Redistricting Existing Conditions Report



County of Orange Summary for Existing Supervisorial Districts

Table 1. Adjusted 2020 Census Total Population by Race/Ethnicity

2011 District	Total Population	Hispanic or Latino of any Race	Non-Hispanic White	Non-Hispanic Black or African-American	Non-Hispanic American Indian or Alaska Native	Non-Hispanic Asian	Non-Hispanic Native Hawaiian or Other Pacific Islander	Non-Hispanic Some Other Race	Non-Hispanic Two or More Races
1	604,339	332,647	79,410	5,550	897	171,186	1,873	2,070	10,706
	100.0%	55.0%	13.1%	0.9%	0.1%	28.3%	0.3%	0.3%	1.8%
2	624,563	148,289	318,103	9,276	1,174	112,518	2,015	3,301	29,887
	100.0%	23.7%	50.9%	1.5%	0.2%	18.0%	0.3%	0.5%	4.8%
3	694,805	168,185	271,433	12,896	953	203,406	1,134	3,662	33,136
	100.0%	24.2%	39.1%	1.9%	0.1%	29.3%	0.2%	0.5%	4.8%
4	641,439	318,435	149,530	14,782	1,274	134,995	1,830	2,741	17,852
	100.0%	49.6%	23.3%	2.3%	0.2%	21.0%	0.3%	0.4%	2.8%
5	627,864	122,725	381,652	7,439	1,027	77,162	885	3,313	33,661
	100.0%	19.5%	60.8%	1.2%	0.2%	12.3%	0.1%	0.5%	5.4%
COUNTY TOTAL	3,193,010	1,090,281	1,200,128	49,943	5,325	699,267	7,737	15,087	125,242
	100.0%	34.1%	37.6%	1.6%	0.2%	21.9%	0.2%	0.5%	3.9%

Table 2. Difference from 2021 Target Supervisorial District Population of 638,602

District	Number	Percent	Percentage Spread (Largest - Smallest)
1	-34,263	-5.37%	14.17%
2	-14,039	-2.20%	
3	56,203	8.80%	
4	2,837	0.44%	
5	-10,738	-1.68%	

Split Cities/Census Designated Places (CDPs) -

Anaheim (2)

Buena Park (2)

Fountain Valley (2)

Irvine (2)

Lake Forest (2) - U.S. Census Bureau's updated place boundaries include portion of 5 Freeway located in District 3.

Mission Viejo (2) - City annexed land in 2013 located in District 3.

Trabuco Canyon CDP (2) - CDP was created for 2020 Census and small portion of new CDP is in District 5.

Number in () indicates number of Supervisorial Districts the city/CDP falls within.

County of Orange
Summary for Existing Supervisorial Districts

Table 3. Adjusted Citizen Voting Age Population (CVAP) by Race/Ethnicity, 2015-2019 5-Year Estimates

2011 District	Total Estimated CVAP	Hispanic or Latino of any Race	Non-Hispanic White	Non-Hispanic Black or African-American	Non-Hispanic American Indian or Alaska Native	Non-Hispanic or Other Pacific Islander	Non-Hispanic Asian	Non-Hispanic Two or More Races
1	356,845	147,373	81,093	4,428	717	116,915	969	4,066
	100.0%	41.4%	22.8%	1.2%	0.2%	32.9%	0.3%	1.1%
2	449,572	76,119	279,505	8,683	1,083	70,866	1,627	10,851
	100.0%	17.0%	62.3%	1.9%	0.2%	15.8%	0.4%	2.4%
3	431,588	83,567	231,205	7,550	653	96,853	778	10,080
	100.0%	19.4%	53.7%	1.8%	0.2%	22.5%	0.2%	2.3%
4	380,294	141,736	138,226	11,881	663	78,148	1,715	6,614
	100.0%	37.4%	36.5%	3.1%	0.2%	20.6%	0.5%	1.7%
5	447,377	62,120	316,532	7,013	817	48,610	478	11,442
	100.0%	13.9%	70.8%	1.6%	0.2%	10.9%	0.1%	2.6%
COUNTY TOTAL	2,065,676	510,915	1,046,561	39,555	3,933	411,392	5,567	43,053
	100.0%	24.8%	50.8%	1.9%	0.2%	20.0%	0.3%	2.1%

Source: Statewide Database 2015-2019 Citizen Voting Age Population, adjusted to reflect reallocated incarcerated persons, on 2020 Census Blocks, Revised 9/27/2021 <https://statewidedatabase.org/redistricting2021/counties.html>

Notes: Percentages are calculated from sum of individual categories, not Total Estimated CVAP.

Because this is a special tabulation of data and not part of the standard data products shown on the Census Bureau's data.census.gov website, these estimates are rounded. Therefore, individual categories may not exactly add to the total.

For example, the sum of each of the race groups for non-Hispanics may not be the same as the estimate given for non-Hispanics. These estimates will not match counts from the 2020 Census.

The original data source for the Citizen Voting Age Population (CVAP) is the American Community Survey (ACS). The ACS is an ongoing survey by the U.S. Census Bureau sent to approximately 250,000 households each month.

The ACS estimates used to develop these data were collected from January 1, 2015 to December 31, 2019 utilizing the 2010 Census block groups, which were disaggregated to the 2020 Census blocks by the Statewide Database.

For more information about the CVAP products, visit <https://www.census.gov/programs-surveys/decennial-census/about/voting-rights/cvap.html> and

https://www2.census.gov/programs-surveys/decennial/rdo/technical-documentation/special-tabulation/CVAP_2015-2019_ACS_documentation.pdf

County of Orange
Summary for Existing Supervisorial Districts

Table 4. Adjusted 2020 Census Population by Existing Supervisorial Districts and 2020 Census Place

DISTRICT 1

Place	Total Population	Percent of District
Fountain Valley*	19,026	3.1%
Garden Grove	172,346	28.5%
Midway City CDP	8,845	1.5%
Santa Ana ¹	311,653	51.6%
Unincorporated	1,386	0.2%
Westminster	91,083	15.1%
District 1 Total	604,339	100.0%

DISTRICT 2

Place	Total Population	Percent of District
Buena Park*	34,643	5.5%
Costa Mesa	112,139	18.0%
Cypress	50,235	8.0%
Fountain Valley*	38,094	6.1%
Huntington Beach	199,033	31.9%
La Palma	15,597	2.5%
Los Alamitos	11,795	1.9%
Newport Beach	85,338	13.7%
Rossmoor CDP	10,634	1.7%
Seal Beach	25,283	4.0%
Stanton	38,067	6.1%
Unincorporated	3,705	0.6%
District 2 Total	624,563	100.0%

DISTRICT 3

Place	Total Population	Percent of District
Anaheim*	73,086	10.5%
Irvine*	287,635	41.4%
Lake Forest ²	0	0.0%
Mission Viejo ³	270	0.0%
Modjeska CDP	632	0.1%
North Tustin CDP	25,749	3.7%
Orange	140,191	20.2%
Silverado CDP	932	0.1%
Trabuco Canyon CDP ⁴	1,019	0.1%
Tustin	80,152	11.5%
Unincorporated	10,781	1.6%
Villa Park	5,850	0.8%
Williams Canyon CDP	93	0.0%
Yorba Linda	68,415	9.8%
District 3 Total	694,805	100.0%

DISTRICT 4

Place	Total Population	Percent of District
Anaheim*	274,667	42.8%
Brea	47,397	7.4%
Buena Park*	49,544	7.7%
Fullerton	143,930	22.4%
La Habra	63,234	9.9%
Placentia	51,925	8.1%
Unincorporated	10,742	1.7%
District 4 Total	641,439	100.0%

DISTRICT 5

Place	Total Population	Percent of District
Aliso Viejo	52,222	8.3%
Coto de Caza CDP	14,723	2.3%
Dana Point	33,144	5.3%
Irvine*	20,323	3.2%
Ladera Ranch CDP	26,188	4.2%
Laguna Beach	23,061	3.7%
Laguna Hills	31,399	5.0%
Laguna Niguel	64,417	10.3%
Laguna Woods	17,658	2.8%
Lake Forest ²	85,965	13.7%
Las Flores CDP	6,004	1.0%
Mission Viejo ³	93,490	14.9%
Rancho Mission Viejo CDP	10,385	1.7%
Rancho Santa Margarita	48,000	7.6%
San Clemente	64,384	10.3%
San Juan Capistrano	35,271	5.6%
Trabuco Canyon CDP ⁴	1	0.0%
Unincorporated	1,229	0.2%
District 5 Total	627,864	100.0%

*City/CDP split by 2011 district.

CDP- Census Designated Place

¹ Includes correction to Santa Ana from Tustin due to incorrect Census Bureau city assignment (260 population).

² U.S. Census Bureau's updated place boundaries include portion of 5 Freeway located in District 3.

³ City of Mission Viejo annexed land in 2013 located in District 3.

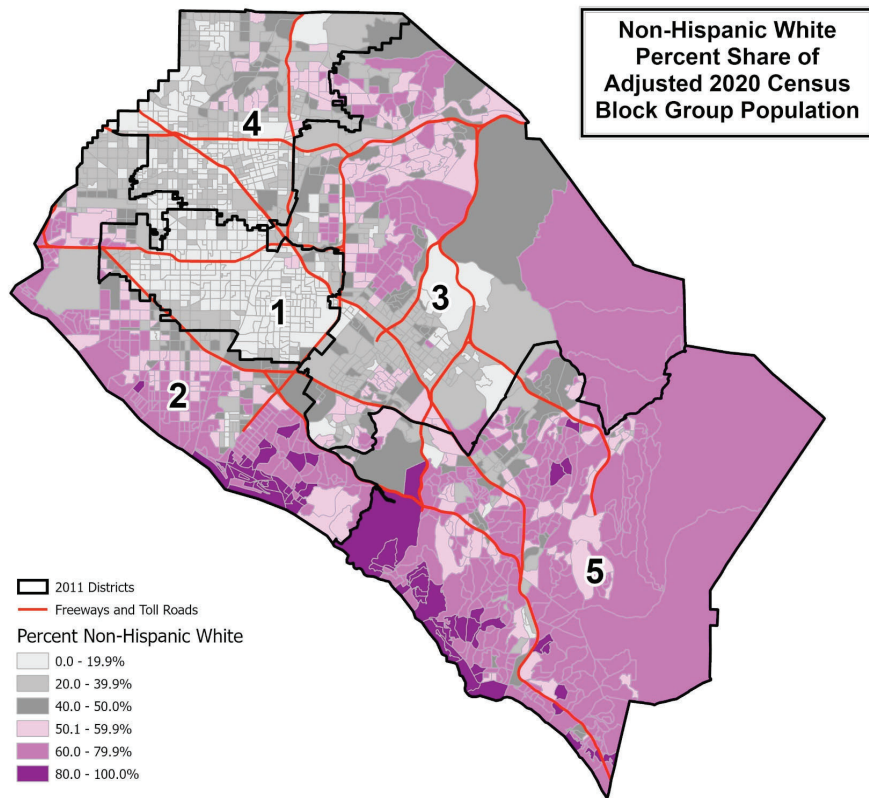
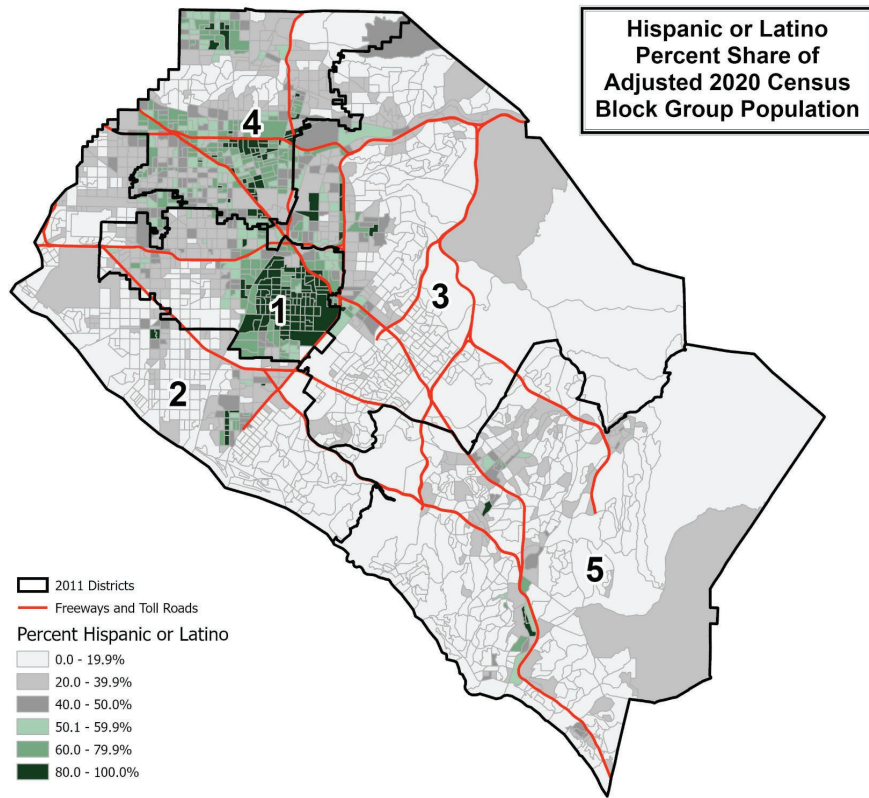
⁴ Trabuco Canyon CDP was created for 2020 Census and small portion of new CDP is in District 5.

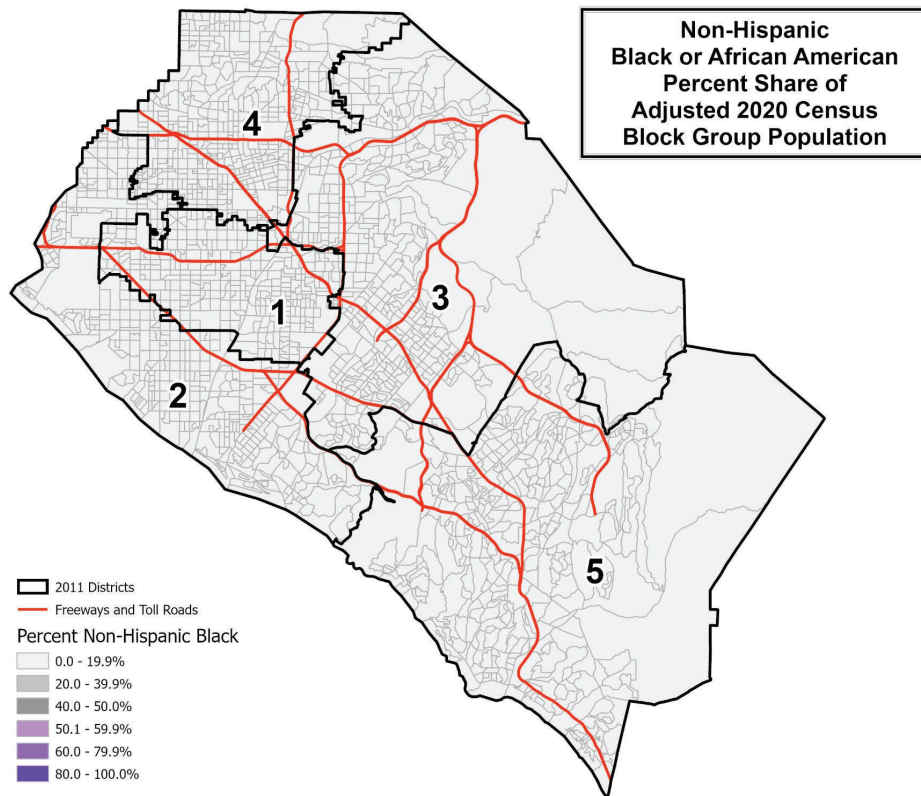
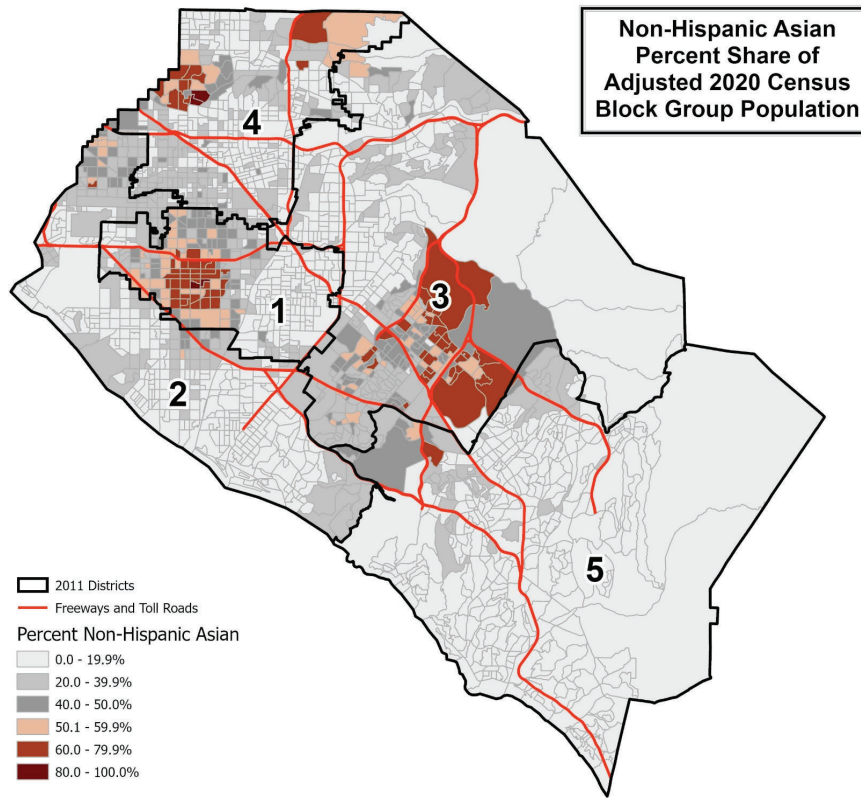
County of Orange
Summary for Existing Supervisorial Districts

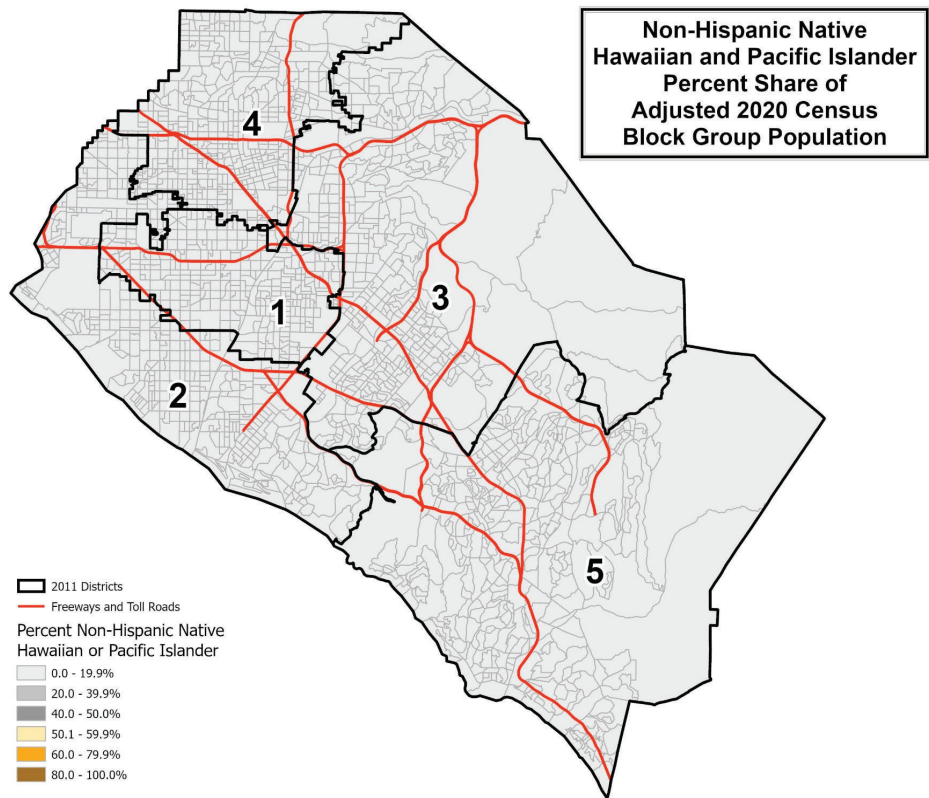
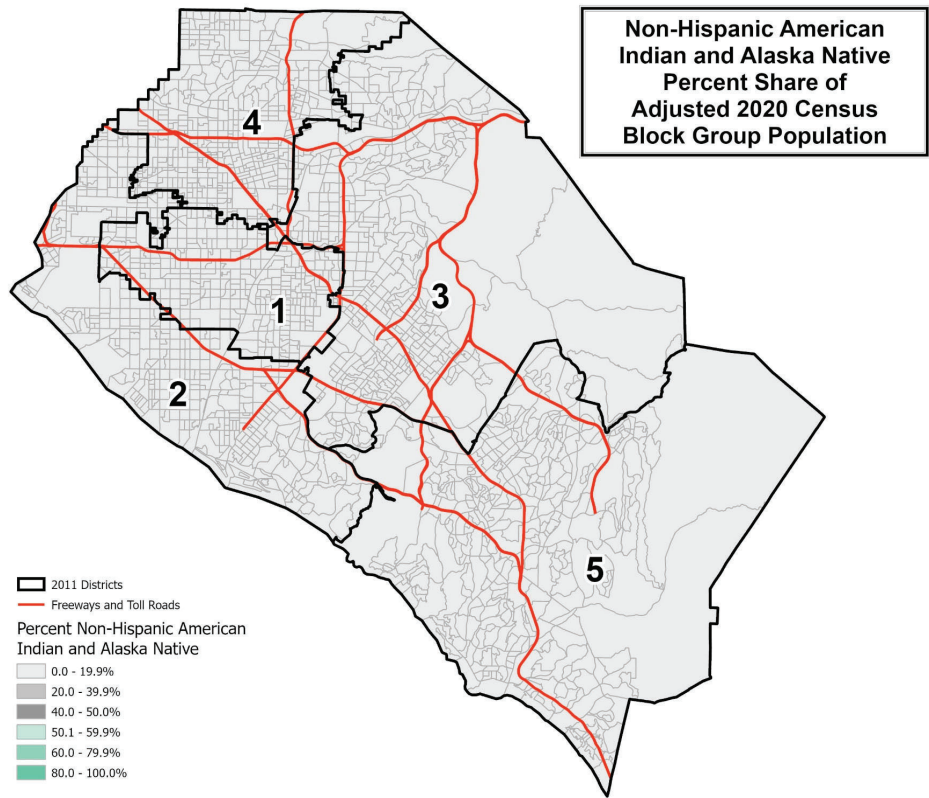
Table 5. Adjusted 2020 Census Population 18 Years and Over by Race/Ethnicity

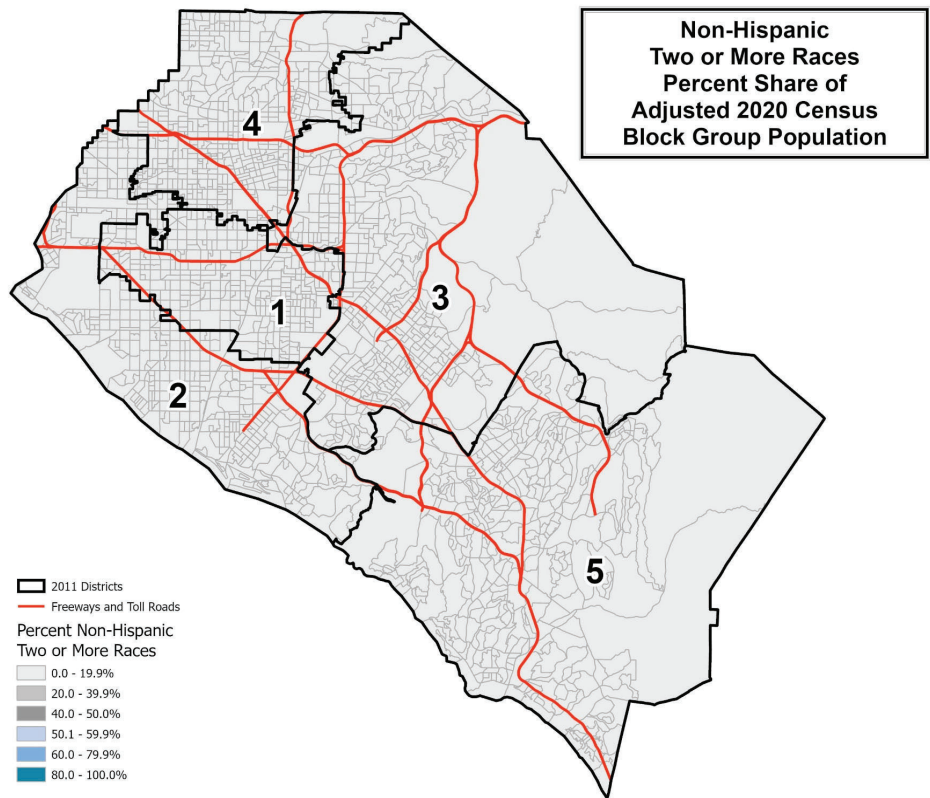
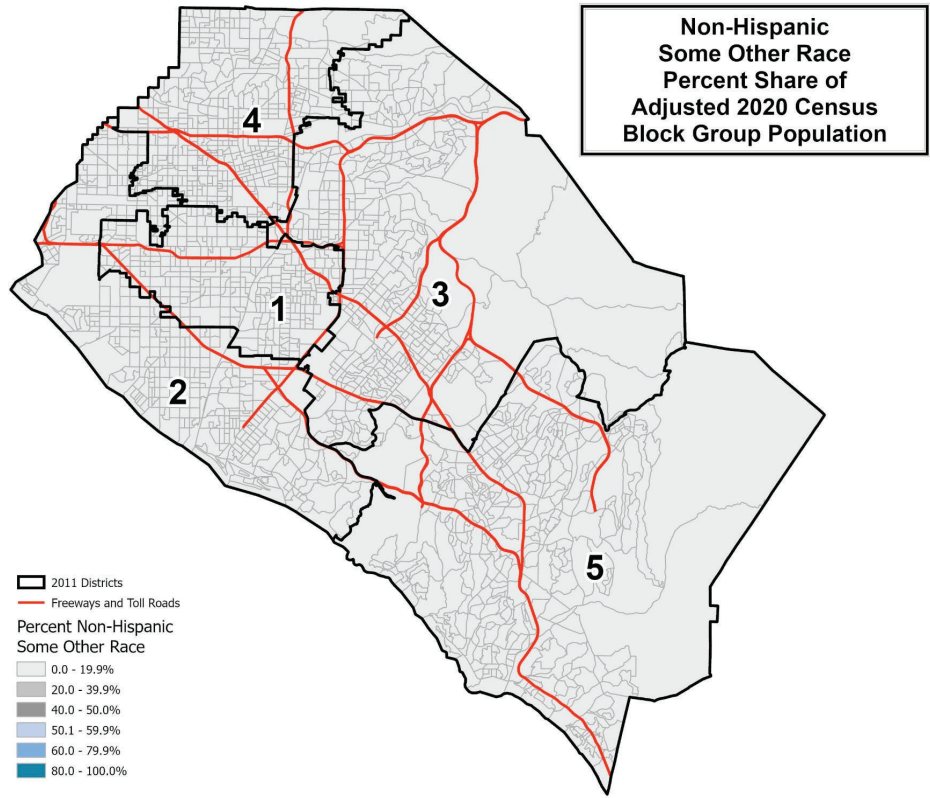
2011 District	Total Population 18 and Over	Hispanic or Latino of any Race	Non-Hispanic White	Non-Hispanic Black or African-American	Non-Hispanic American Indian or Alaska Native	Non-Hispanic Asian	Non-Hispanic Native Hawaiian or Other Pacific Islander	Non-Hispanic Some Other Race	Non-Hispanic Two or More Races
1	468,482	239,580	70,423	4,741	726	142,539	1,504	1,510	7,459
	100.0%	51.1%	15.0%	1.0%	0.2%	30.4%	0.3%	0.3%	1.6%
2	507,679	108,207	274,223	7,682	1,048	92,685	1,619	2,524	19,691
	100.0%	21.3%	54.0%	1.5%	0.2%	18.3%	0.3%	0.5%	3.9%
3	549,426	123,388	230,066	10,672	770	159,861	896	2,665	21,108
	100.0%	22.5%	41.9%	1.9%	0.1%	29.1%	0.2%	0.5%	3.8%
4	499,437	228,505	130,806	12,072	1,082	111,390	1,473	1,999	12,110
	100.0%	45.8%	26.2%	2.4%	0.2%	22.3%	0.3%	0.4%	2.4%
5	500,655	87,837	317,885	6,300	876	63,388	712	2,432	21,225
	100.0%	17.5%	63.5%	1.3%	0.2%	12.7%	0.1%	0.5%	4.2%
COUNTY TOTAL	2,525,679	787,517	1,023,403	41,467	4,502	569,863	6,204	11,130	81,593
	100.0%	31.2%	40.5%	1.6%	0.2%	22.6%	0.2%	0.4%	3.2%

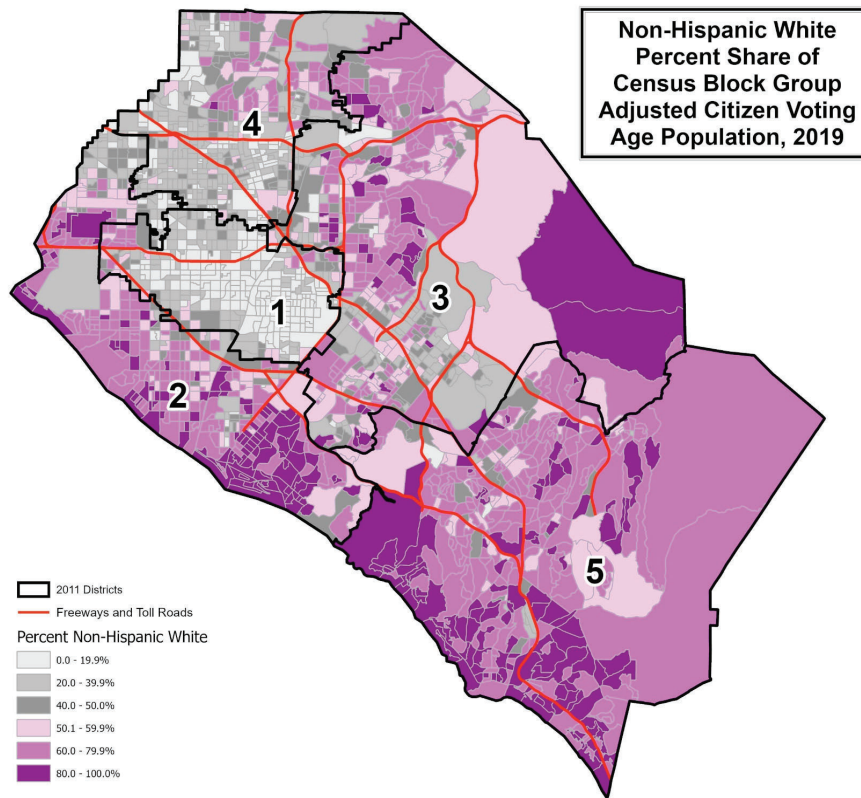
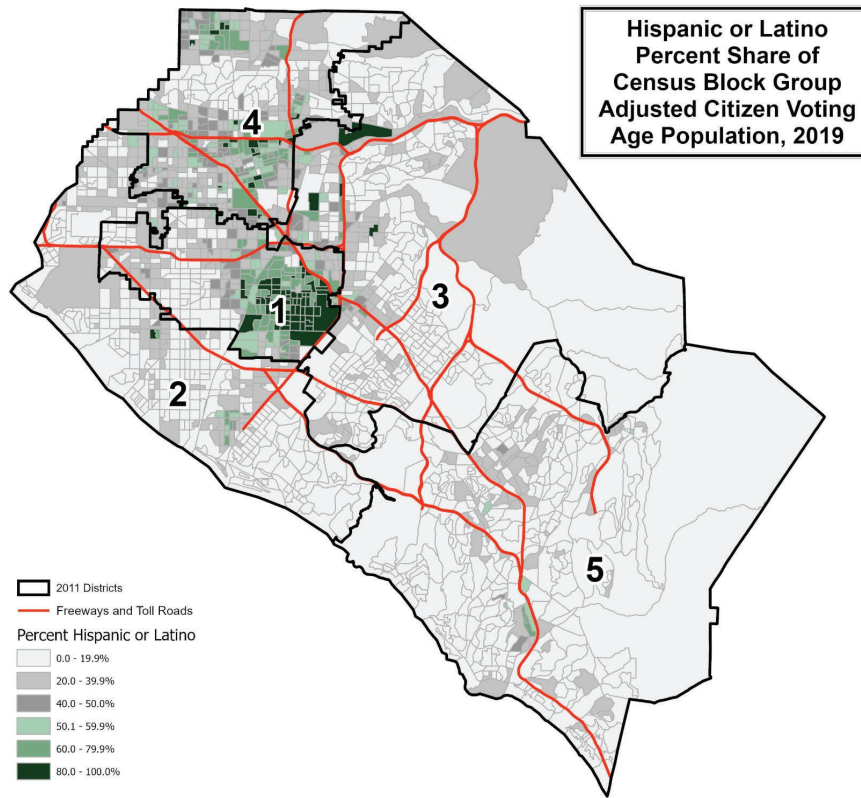
Source: Statewide Database; Adjusted, incarcerated persons reallocated P.L. 94-171 2020 Redistricting Data, Revised 9/27/2021

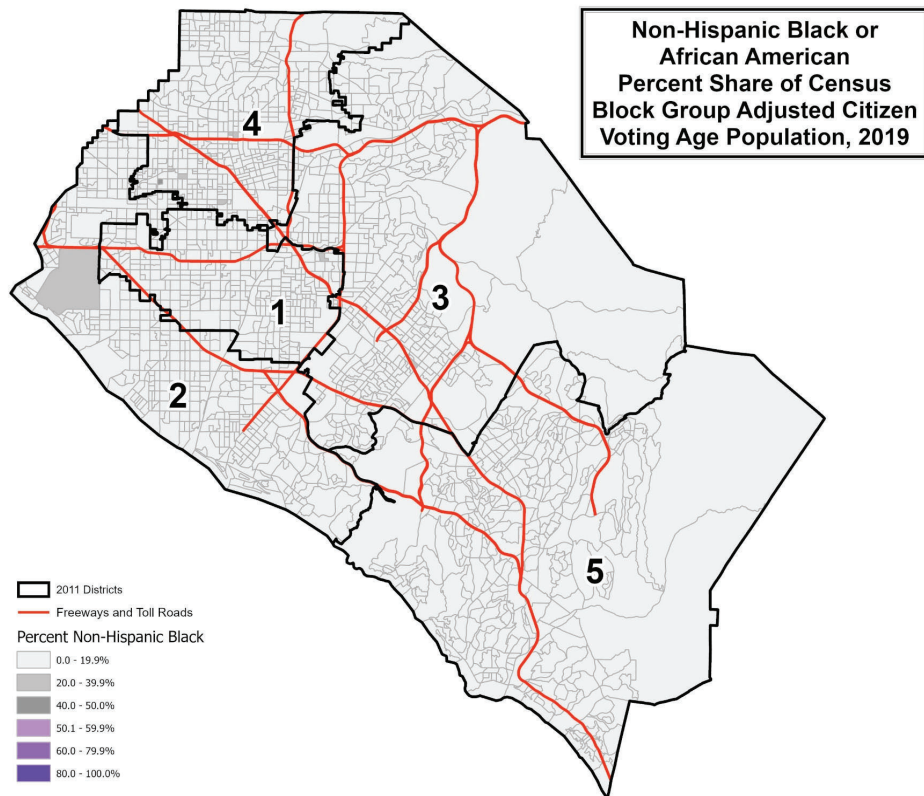
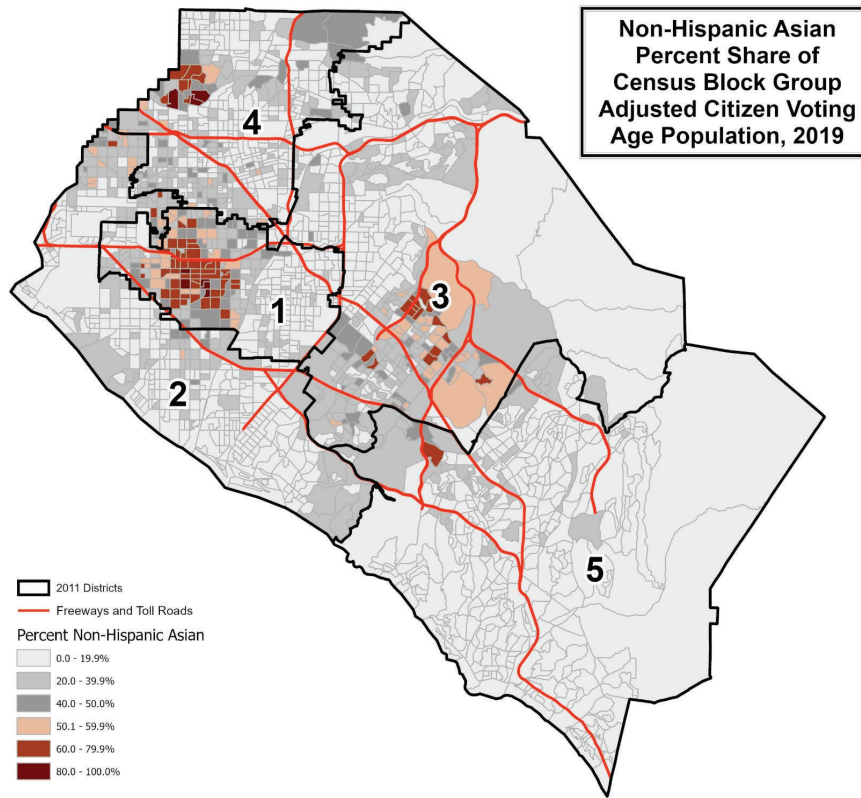


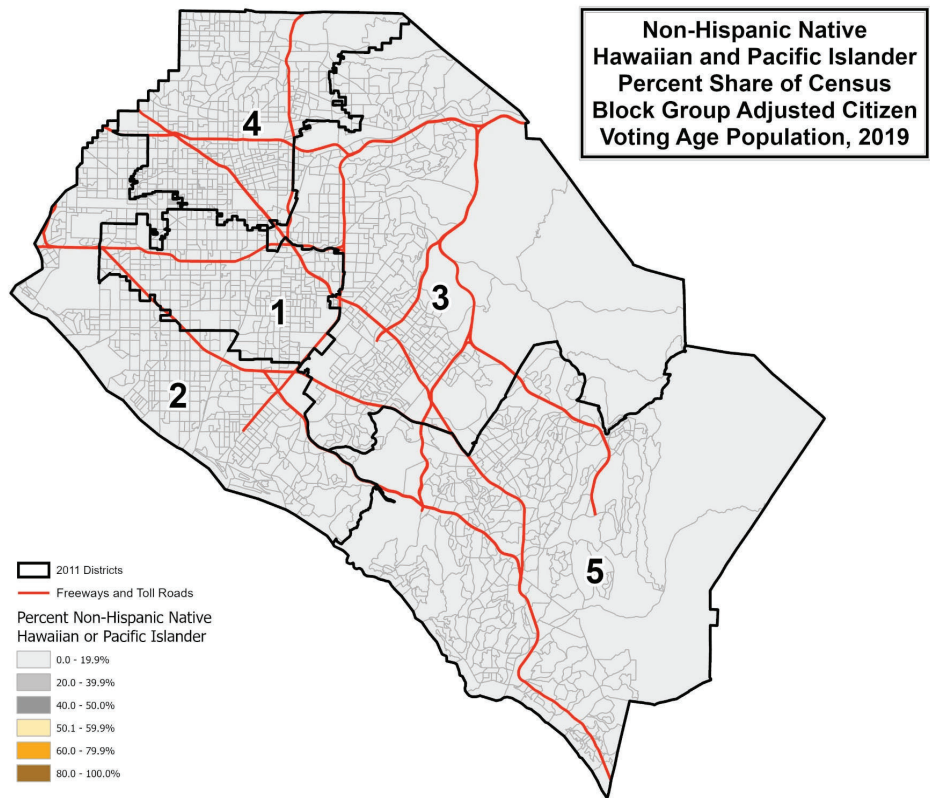
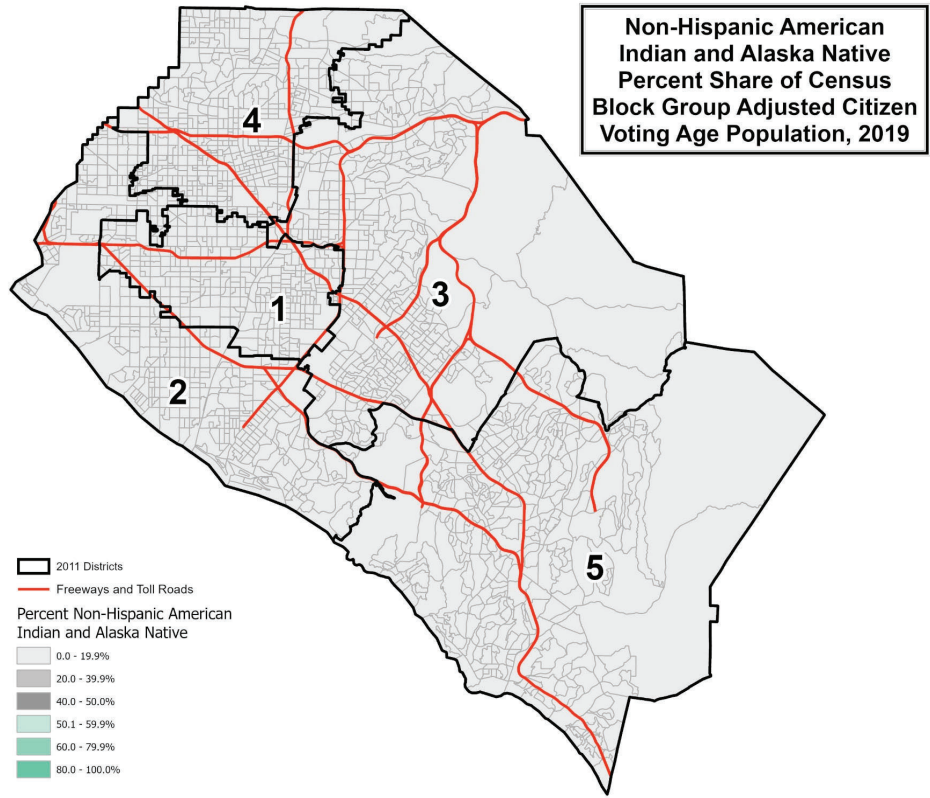












**Non-Hispanic
Two or More Races
Percent Share of Adjusted
Census Block Group Citizen
Voting Age Population, 2019**

