



# **2021 REDISTRICTING**

[www.ocgov.com/redistricting](http://www.ocgov.com/redistricting)

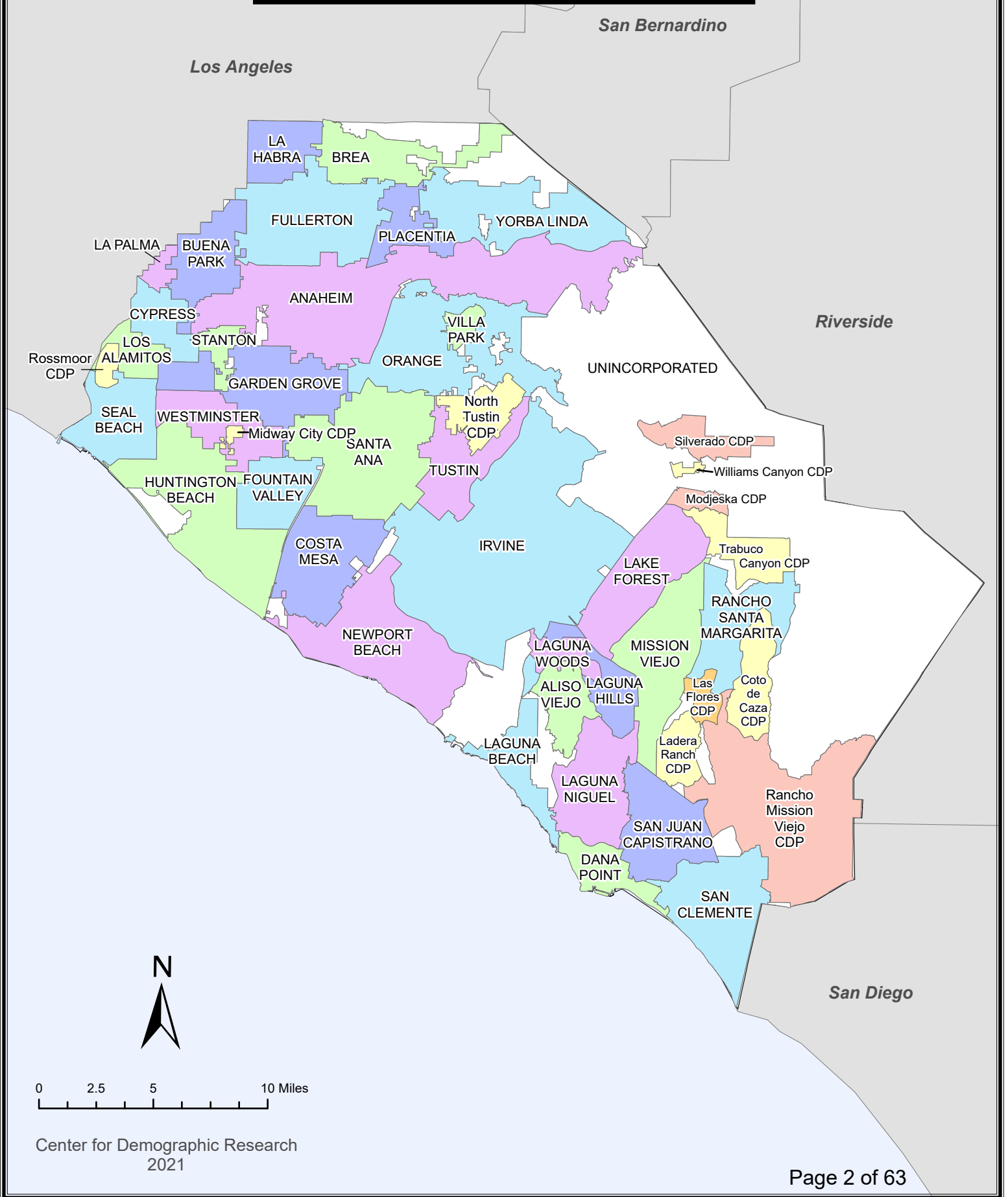
## **County of Orange Supervisory District**

### **Redistricting Proposals and Revisions**

**November 22, 2021**



# 2020 Census Places Orange County, California



**County of Orange 2021 Redistricting  
Supervisorial District Summary of Proposals Under Consideration**

**Prepared for November 22, 2021 Board Meeting**

Proposal	Author	Plan Considered by Board	Plans with Technical Corrections			Technical Adjustment Needed?	Santa Ana/Tustin Fix Needed?
			Percent Spread	Number of Split Cities (of 34 total)	Number of Split CDPs (of 11 total)		
4C-Revision 1-Technical Corrections	Christopher Wangsaporn, Office of Chairman Andrew Do, First District	11/16/2021	7.14%	14	0	Done*	Not needed
5A-Revision 1-Technical Corrections	LaShe Rodriguez, Office of Vice Chairman Doug Chaffee, Fourth District	11/16/2021	9.58%	5	1	Done*	Not needed
4C-Revision 1-A	11/16/2021 Board-authorized revisions suggested by Chairman Do	11/22/2021	7.27%	8	0	No	Not needed
4C-Revision 1-B**	11/16/2021 Board-authorized revisions suggested by Chairman Do with revisions suggested by Supervisor Bartlett	11/22/2021	10.62%	6	0	No	Not needed
4C-Revision 1-C**	11/16/2021 Board-authorized revisions suggested by Chairman Do with revisions suggested by Supervisor Bartlett and Supervisory Foley	11/22/2021	19.86%	5	0	No	Not needed
4C-Revision 1-D	11/16/2021 Board-authorized revisions suggested by Chairman Do with revisions suggested by Supervisory Foley	11/22/2021	12.72%	7	0	No	Not needed

CDP- Census Designated Place

**Notes:**

Technical Adjustments refer to instances where a portion of a city or CDP is split into multiple districts and one of those district assignments contains an area that is unpopulated.

\*In line with previous board direction and in order to expedite proposal packages for consideration by the board, technical corrections to unpopulated city splits were incorporated into the revised plans and details are included in the individual proposal packet notes section on the author page.

The U.S. Census Bureau misassigned three (3) census blocks to the City of Tustin that are actually in the City of Santa Ana with a total of 260 population.

The Board of Supervisors took action on November 16, 2021 to move forward with two plans and make four sets of revisions to Plan 4C-1 for consideration at the November 22, 2021 Board meeting.

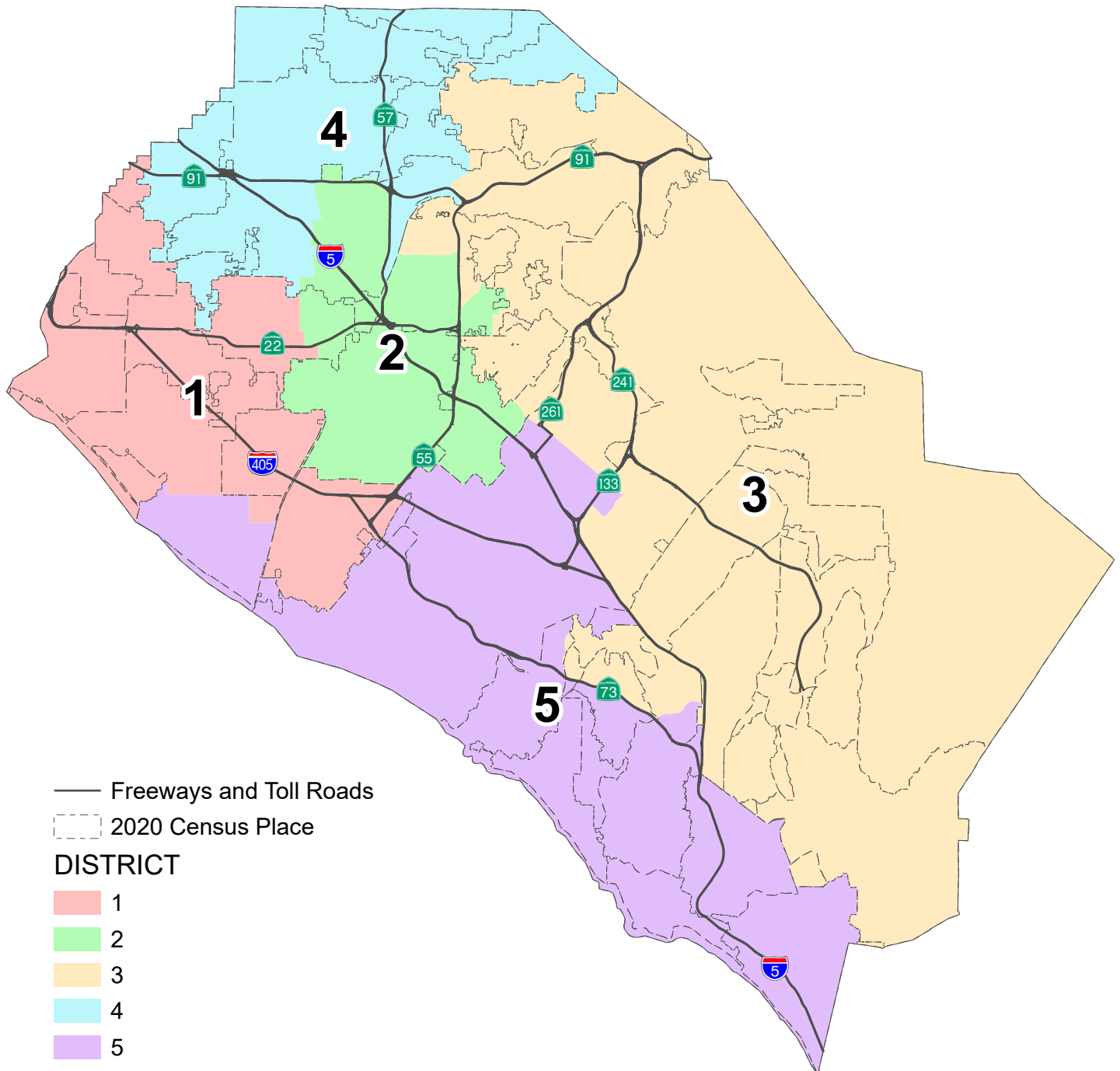
\*\*Revisions authorized by the Board of Supervisors on November 16, 2021 to move Laguna Hills from District 3 into District 5 created a non-contiguous District 3 with Laguna Woods detached from District 3 by Laguna Hills.

This page is intentionally left blank



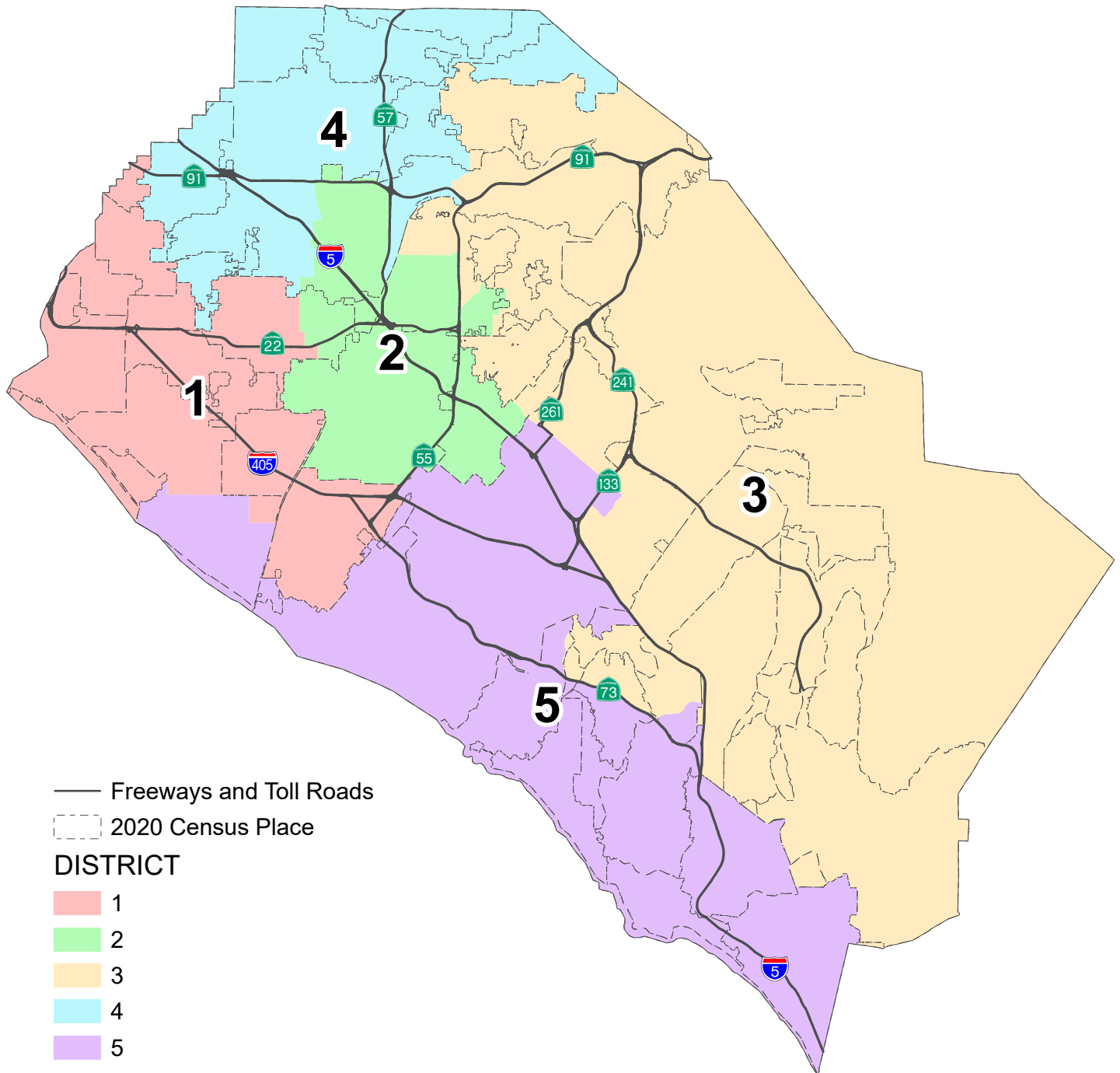
County of Orange 2021 Redistricting

Proposal 4C-1 Map (Technical Corrections)



# County of Orange 2021 Redistricting

## Proposal 4C-1 Map



This map is of the original submission before technical corrections were made to eliminate unpopulated city splits.

**PROPOSAL 4C-Revision 1 with Technical Corrections  
County of Orange 2021 Redistricting**

**Table 1. Adjusted 2020 Census Total Population by Race/Ethnicity**

District	Total Population	Hispanic or Latino of any Race	Non-Hispanic White	Non-Hispanic Black or African-American	Non-Hispanic American Indian or Alaska Native	Non-Hispanic Asian	Non-Hispanic Native Hawaiian or Other Pacific Islander	Non-Hispanic Some Other Race	Non-Hispanic Two or More Races
<b>1</b>	629,786	163,599	233,852	8,703	1,095	191,798	2,402	2,898	25,439
	100.0%	26.0%	37.1%	1.4%	0.2%	30.5%	0.4%	0.5%	4.0%
<b>2</b>	625,059	416,481	94,191	8,510	1,019	89,043	1,577	2,314	11,924
	100.0%	66.6%	15.1%	1.4%	0.2%	14.2%	0.3%	0.4%	1.9%
<b>3</b>	654,807	126,297	342,190	8,553	920	138,760	919	3,215	33,953
	100.0%	19.3%	52.3%	1.3%	0.1%	21.2%	0.1%	0.5%	5.2%
<b>4</b>	618,867	282,160	151,555	14,604	1,248	146,392	1,960	2,801	18,147
	100.0%	45.6%	24.5%	2.4%	0.2%	23.7%	0.3%	0.5%	2.9%
<b>5</b>	664,491	101,744	378,340	9,573	1,043	133,274	879	3,859	35,779
	100.0%	15.3%	56.9%	1.4%	0.2%	20.1%	0.1%	0.6%	5.4%
<b>COUNTY TOTAL</b>	3,193,010	1,090,281	1,200,128	49,943	5,325	699,267	7,737	15,087	125,242
	100.0%	34.1%	37.6%	1.6%	0.2%	21.9%	0.2%	0.5%	3.9%

**Table 2. Difference from 2021 Target Supervisorial District Population of 638,602**

District	Number	Percent	Percentage Spread (Largest - Smallest)
<b>1</b>	-8,816	-1.38%	7.14%
<b>2</b>	-13,543	-2.12%	
<b>3</b>	16,205	2.54%	
<b>4</b>	-19,735	-3.09%	
<b>5</b>	25,889	4.05%	

**Split Cities/Census Designated Places (CDPs) -**

Aliso Viejo (2)	Newport Beach (2)
Anaheim (3)	Orange (2)
Costa Mesa (2)	Placentia (2)
Garden Grove (2)	Santa Ana (2)
Huntington Beach (2)	Tustin (2)
Irvine (2)	Yorba Linda (2)
Laguna Beach (2)	
Laguna Hills (2)	

Percent shares calculated using unrounded numbers, but table displays only to tenths; therefore, percents displayed may not sum to 100%.

Number in ( ) indicates number of Supervisorial Districts the city/CDP falls within.

In line with previous board direction and in order to expedite proposal packages for consideration by the board, Proposal 4C-Revision 1 with Technical Corrections includes the technical correction of city splits in unpopulated areas. The U.S. Census Bureau misassigned three (3) census blocks to the City of Tustin that are actually in the City of Santa Ana with a total of 260 population. Since the affected area is fully assigned to District 2, no correction is necessary.

**PROPOSAL 4C-Revision 1 with Technical Corrections  
County of Orange 2021 Redistricting**

**Table 3. Adjusted Citizen Voting Age Population (CVAP) by Race/Ethnicity, 2015-2019 5-Year Estimates**

District	Total Estimated CVAP	Hispanic or Latino of any Race	Non- Hispanic White	Non-Hispanic Black or African- American	Non-Hispanic American Indian or Alaska Native	Non- Hispanic Asian	Non-Hispanic Native Hawaiian or Other Pacific Islander	Non- Hispanic Two or More Races
<b>1</b>	439,639	81,347	211,417	8,152	1,150	124,594	1,569	10,079
	100.0%	18.6%	48.2%	1.9%	0.3%	28.4%	0.4%	2.3%
<b>2</b>	342,718	179,477	91,457	6,004	553	59,128	913	4,062
	100.0%	52.5%	26.8%	1.8%	0.2%	17.3%	0.3%	1.2%
<b>3</b>	442,708	65,285	285,244	6,705	765	73,673	489	9,907
	100.0%	14.8%	64.5%	1.5%	0.2%	16.7%	0.1%	2.2%
<b>4</b>	379,782	130,103	140,985	11,984	789	86,430	1,845	6,820
	100.0%	34.3%	37.2%	3.2%	0.2%	22.8%	0.5%	1.8%
<b>5</b>	460,829	54,703	317,458	6,710	676	67,567	751	12,185
	100.0%	11.9%	69.0%	1.5%	0.1%	14.7%	0.2%	2.6%
<b>COUNTY TOTAL</b>	2,065,676	510,915	1,046,561	39,555	3,933	411,392	5,567	43,053
	100.0%	24.8%	50.8%	1.9%	0.2%	20.0%	0.3%	2.1%

Source: Statewide Database 2015-2019 Citizen Voting Age Population, adjusted to reflect reallocated incarcerated persons, on 2020 Census Blocks, Revised 9/27/2021 <https://statewidedatabase.org/redistricting2021/counties.html>

Notes: Percentages are calculated from sum of individual categories, not Total Estimated CVAP.

Because this is a special tabulation of data and not part of the standard data products shown on the Census Bureau's data.census.gov website, these estimates are rounded. Therefore, individual categories may not exactly add to the total.

For example, the sum of each of the race groups for non-Hispanics may not be the same as the estimate given for non-Hispanics. These estimates will not match counts from the 2020 Census.

The original data source for the Citizen Voting Age Population (CVAP) is the American Community Survey (ACS). The ACS is an ongoing survey by the U.S. Census Bureau sent to approximately 250,000 households each month.

The ACS estimates used to develop these data were collected from January 1, 2015 to December 31, 2019 utilizing the 2010 Census block groups, which were disaggregated to the 2020 Census blocks by the Statewide Database.

For more information about the CVAP products, visit <https://www.census.gov/programs-surveys/decennial-census/about/voting-rights/cvap.html> and

[https://www2.census.gov/programs-surveys/decennial/rdo/technical-documentation/special-tabulation/CVAP\\_2015-2019\\_ACS\\_documentation.pdf](https://www2.census.gov/programs-surveys/decennial/rdo/technical-documentation/special-tabulation/CVAP_2015-2019_ACS_documentation.pdf)

**PROPOSAL 4C-Revision 1 with Technical Corrections  
County of Orange 2021 Redistricting**

**Table 4. Adjusted 2020 Census Population by District and 2020 Census Place****DISTRICT 1**

<b>Place</b>	<b>Total Population</b>	<b>Percent of District</b>
Costa Mesa*	112,132	17.8%
Cypress	50,235	8.0%
Fountain Valley	57,120	9.1%
Garden Grove*	124,106	19.7%
Huntington Beach*	120,922	19.2%
La Palma	15,597	2.5%
Los Alamitos	11,795	1.9%
Midway City CDP	8,845	1.4%
Newport Beach*	622	0.1%
Rossmoor CDP	10,634	1.7%
Santa Ana*	26	0.0%
Seal Beach	25,283	4.0%
Unincorporated	1,386	0.2%
Westminster	91,083	14.5%
<b>District 1 Total</b>	<b>629,786</b>	<b>100.0%</b>

**DISTRICT 2**

<b>Place</b>	<b>Total Population</b>	<b>Percent of District</b>
Anaheim*	113,792	18.2%
Garden Grove*	48,240	7.7%
Orange*	79,088	12.7%
Santa Ana*	311,367	49.8%
Tustin*	68,280	10.9%
Unincorporated	4,292	0.7%
<b>District 2 Total</b>	<b>625,059</b>	<b>100.0%</b>

**DISTRICT 3**

<b>Place</b>	<b>Total Population</b>	<b>Percent of District</b>
Aliso Viejo*	19,822	3.0%
Anaheim*	56,099	8.6%
Coto de Caza CDP	14,723	2.2%
Irvine*	68,622	10.5%
Ladera Ranch CDP	26,188	4.0%
Laguna Beach*	1,437	0.2%
Laguna Hills*	22,343	3.4%
Laguna Woods	17,658	2.7%
Lake Forest	85,965	13.1%
Las Flores CDP	6,004	0.9%
Mission Viejo	93,760	14.3%
Modjeska CDP	632	0.1%
North Tustin CDP	25,749	3.9%
Orange*	61,103	9.3%
Placentia*	1,960	0.3%
Rancho Mission Viejo CDP	10,385	1.6%
Rancho Santa Margarita	48,000	7.3%
Silverado CDP	932	0.1%
Trabuco Canyon CDP	1,020	0.2%
Tustin*	12,132	1.9%
Unincorporated	6,653	1.0%
Villa Park	5,850	0.9%
Williams Canyon CDP	93	0.0%
Yorba Linda*	67,677	10.3%
<b>District 3 Total</b>	<b>654,807</b>	<b>100.0%</b>

**DISTRICT 4**

<b>Place</b>	<b>Total Population</b>	<b>Percent of District</b>
Anaheim*	177,862	28.7%
Brea	47,397	7.7%
Buena Park	84,187	13.6%
Fullerton	143,930	23.3%
La Habra	63,234	10.2%
Placentia*	49,965	8.1%
Stanton	38,067	6.2%
Unincorporated	13,487	2.2%
Yorba Linda*	738	0.1%
<b>District 4 Total</b>	<b>618,867</b>	<b>100.0%</b>

**DISTRICT 5**

<b>Place</b>	<b>Total Population</b>	<b>Percent of District</b>
Aliso Viejo*	32,400	4.9%
Costa Mesa*	7	0.0%
Dana Point	33,144	5.0%
Huntington Beach*	78,111	11.8%
Irvine*	239,336	36.0%
Laguna Beach*	21,624	3.3%
Laguna Hills*	9,056	1.4%
Laguna Niguel	64,417	9.7%
Newport Beach*	84,716	12.7%
San Clemente	64,384	9.7%
San Juan Capistrano	35,271	5.3%
Unincorporated	2,025	0.3%
<b>District 5 Total</b>	<b>664,491</b>	<b>100.0%</b>

\*City split by proposed district.

Percent shares calculated using unrounded numbers, but table displays only to tenths; therefore, percents displayed may not sum to 100%.

In line with previous board direction and in order to expedite proposal packages for consideration by the board, Proposal 4C-Revision 1 with Technical Corrections includes the technical correction of city splits in unpopulated areas.

**PROPOSAL 4C-Revision 1 with Technical Corrections  
County of Orange 2021 Redistricting**

**Table 5. Adjusted 2020 Census Population 18 Years and Over by Race/Ethnicity**

District	Total Population 18 and Over	Hispanic or Latino of any Race	Non- Hispanic White	Non- Hispanic Black or African- American	Non-Hispanic American Indian or Alaska Native	Non- Hispanic Asian	Non-Hispanic Native Hawaiian or Other Pacific Islander	Non- Hispanic Some Other Race	Non- Hispanic Two or More Races
<b>1</b>	508,374	118,766	202,411	7,176	948	158,082	1,934	2,250	16,807
	100.0%	23.4%	39.8%	1.4%	0.2%	31.1%	0.4%	0.4%	3.3%
<b>2</b>	478,333	299,791	83,846	7,221	862	75,295	1,258	1,598	8,462
	100.0%	62.7%	17.5%	1.5%	0.2%	15.7%	0.3%	0.3%	1.8%
<b>3</b>	513,522	89,961	283,929	7,113	754	108,411	739	2,309	20,306
	100.0%	17.5%	55.3%	1.4%	0.1%	21.1%	0.1%	0.4%	4.0%
<b>4</b>	483,626	202,349	132,235	11,894	1,051	120,345	1,570	2,027	12,155
	100.0%	41.8%	27.3%	2.5%	0.2%	24.9%	0.3%	0.4%	2.5%
<b>5</b>	541,824	76,650	320,982	8,063	887	107,730	703	2,946	23,863
	100.0%	14.1%	59.2%	1.5%	0.2%	19.9%	0.1%	0.5%	4.4%
<b>COUNTY TOTAL</b>	2,525,679	787,517	1,023,403	41,467	4,502	569,863	6,204	11,130	81,593
	100.0%	31.2%	40.5%	1.6%	0.2%	22.6%	0.2%	0.4%	3.2%

Percent shares calculated using unrounded numbers, but table displays only to tenths; therefore, percents displayed may not sum to 100%.

Source: Statewide Database; Adjusted, incarcerated persons reallocated P.L. 94-171 2020 Redistricting Data, Revised 9/27/2021

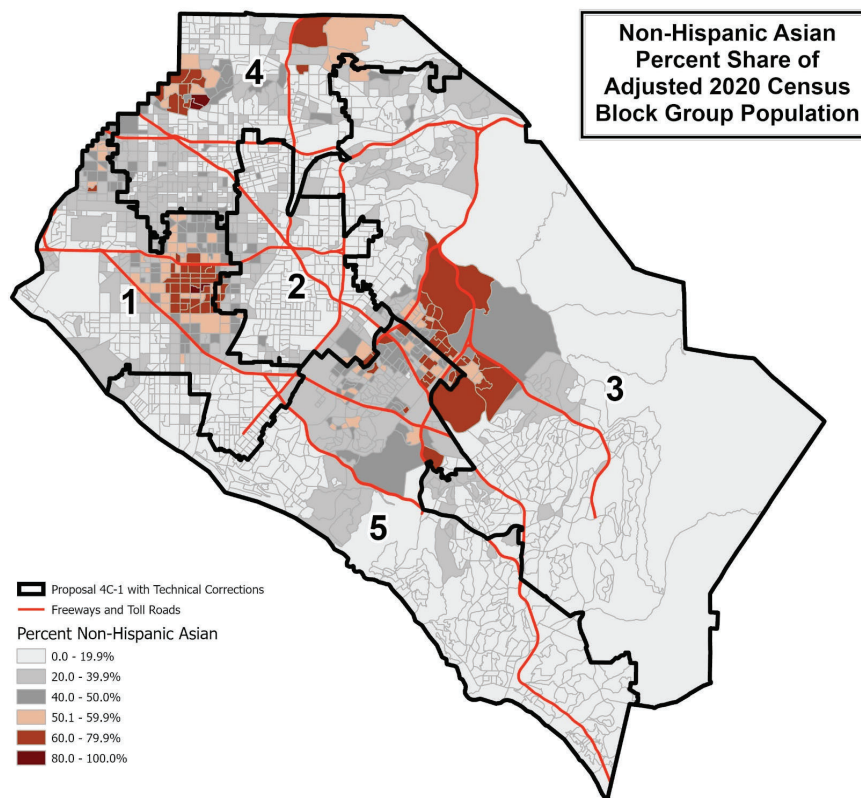
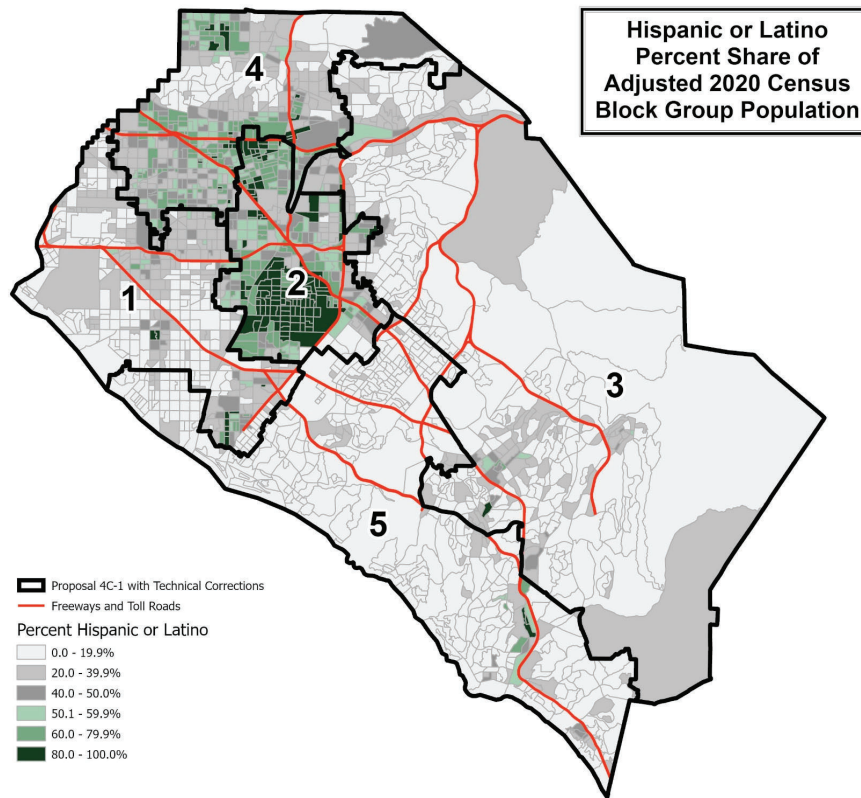
**PROPOSAL 4C-Revision 1 with Technical Corrections**

Contact Name: Christopher Wangsaporn  
Organization: County of Orange, District 1  
Submitted Description: "D1 modification of 4C"

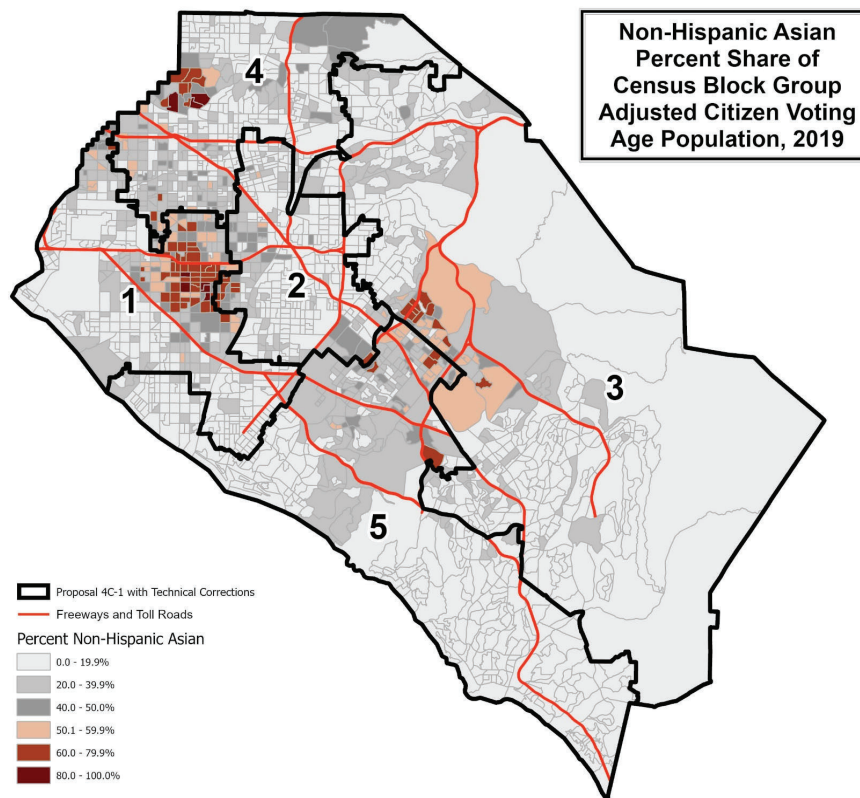
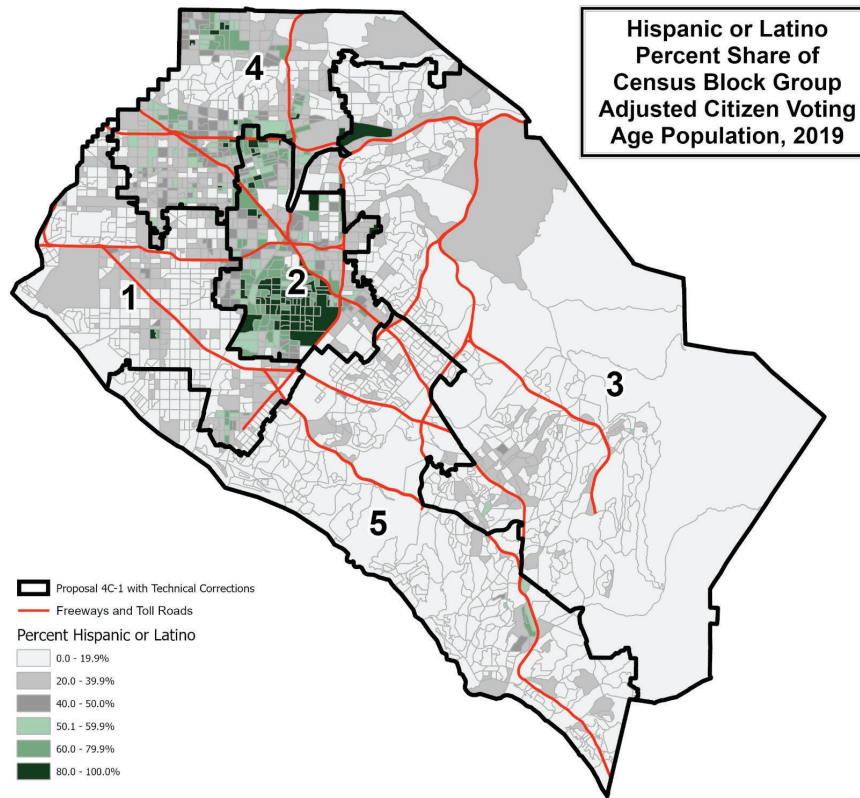
Plan Objectives  
D1 modification of Plan 4C"

Notes: In line with previous board direction and in order to expedite proposal packages for consideration by the board, Proposal 4C-Revision 1 with Technical Corrections includes the correction of city splits in unpopulated areas. Three unpopulated census blocks in the City of Stanton were reassigned from District 1 to District 4 to eliminate unpopulated split for the City of Stanton: 060590881062014, 060590881062015, and 060590881062012

One unpopulated census block that the U.S. Census Bureau assigned to the City of Garden Grove is actually in the City of Stanton and unincorporated County per the OC Surveyor city boundary. This block was assigned by author to District 4 so that all Stanton and the nearby unincorporated island is in District 4 per the OC Surveyor boundary. One unpopulated city split of Garden Grove was removed, leaving two populated splits of the City of Garden Grove.



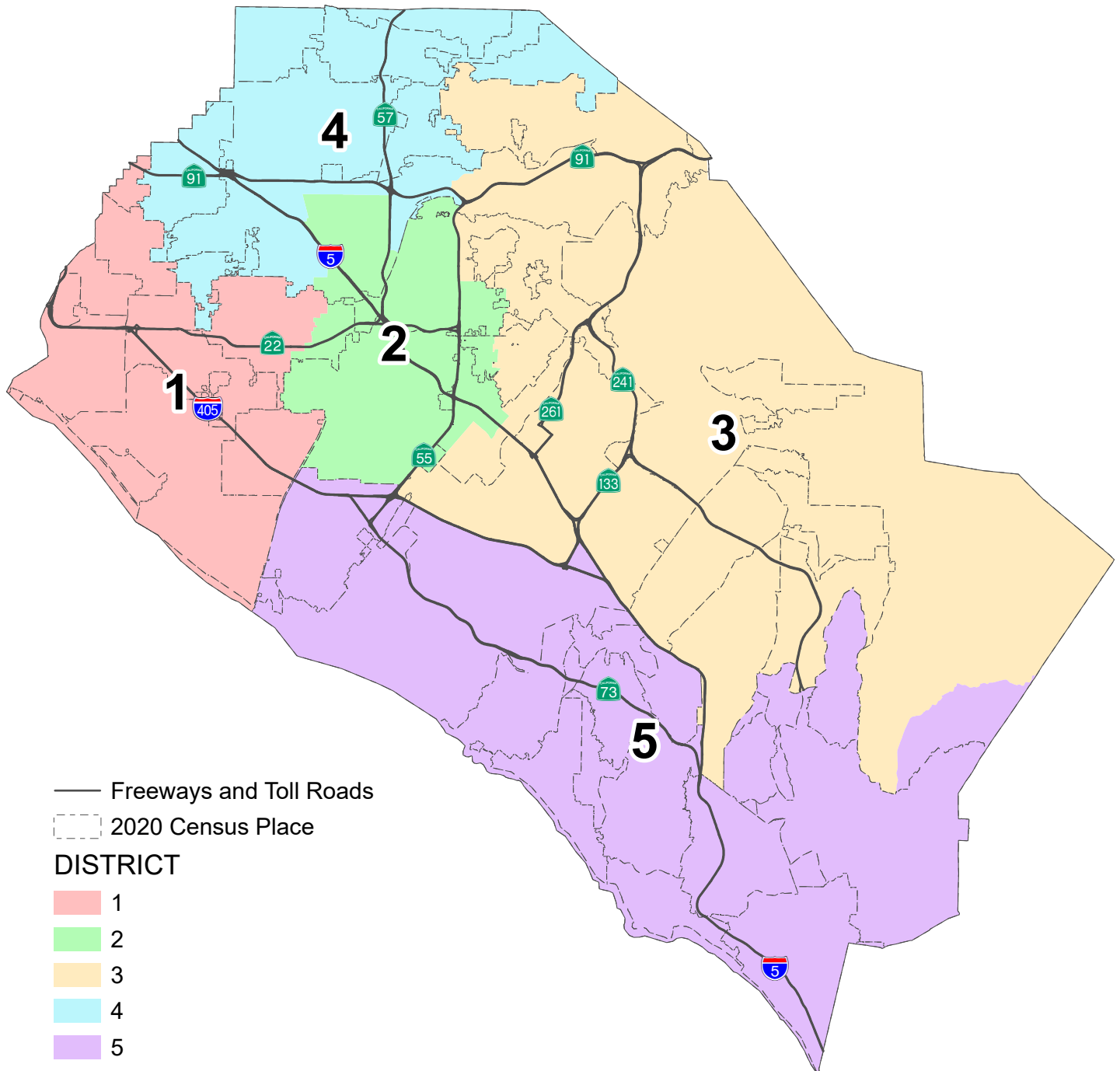




This page is intentionally left blank

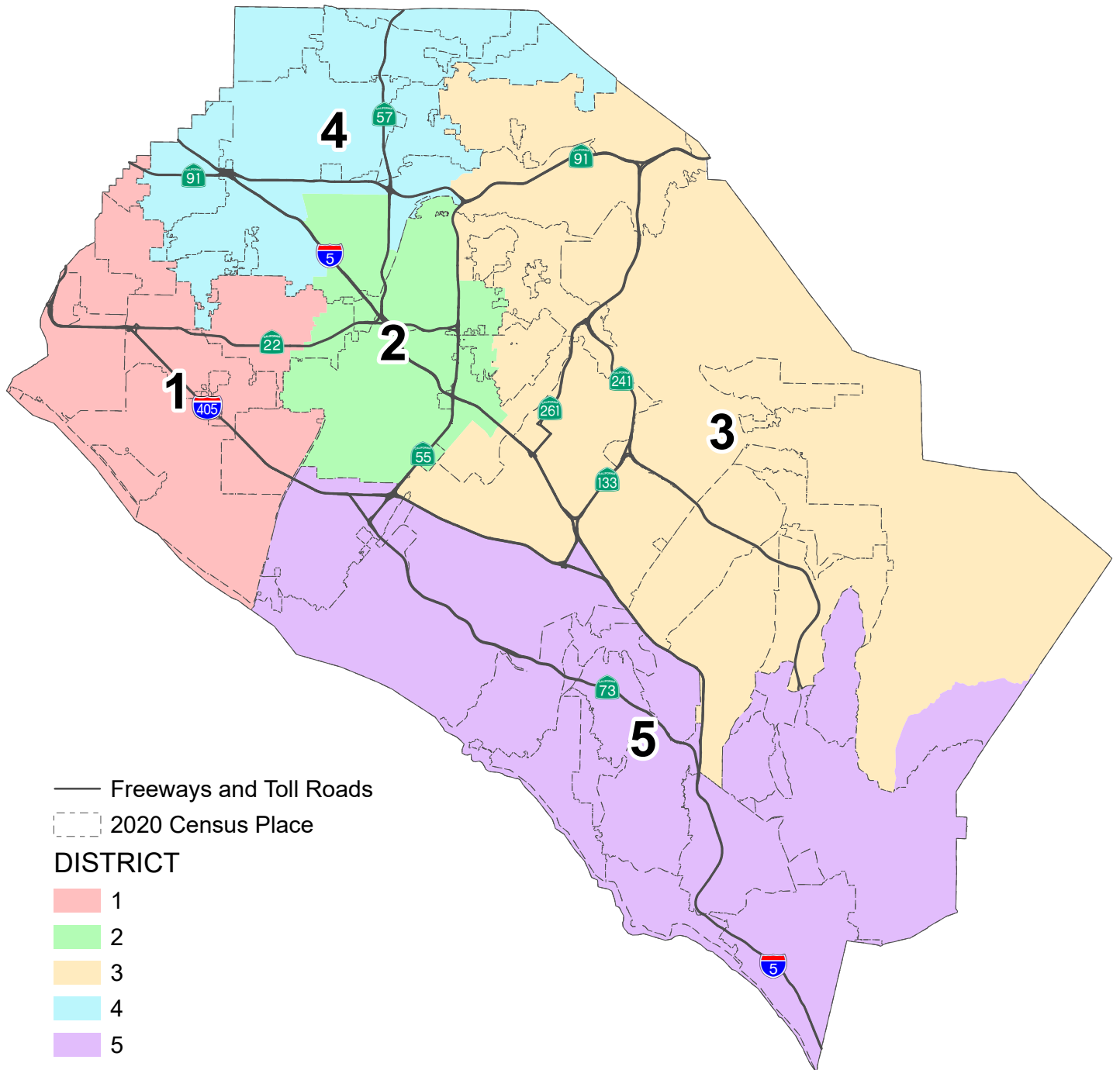
County of Orange 2021 Redistricting

Proposal 5A-1 Map (Technical Corrections)



# County of Orange 2021 Redistricting

## Proposal 5A-1 Map



This map is of the original submission before technical corrections were made to eliminate unpopulated city splits.

**PROPOSAL 5A-Revision 1 with Technical Corrections  
County of Orange 2021 Redistricting**

**Table 1. Adjusted 2020 Census Total Population by Race/Ethnicity**

District	Total Population	Hispanic or Latino of any Race	Non-Hispanic White	Non-Hispanic Black or African-American	Non-Hispanic American Indian or Alaska Native	Non-Hispanic Asian	Non-Hispanic Native Hawaiian or Other Pacific Islander	Non-Hispanic Some Other Race	Non-Hispanic Two or More Races
<b>1</b>	608,672	139,812	233,285	8,077	1,068	195,989	2,188	2,811	25,442
	100.0%	23.0%	38.3%	1.3%	0.2%	32.2%	0.4%	0.5%	4.2%
<b>2</b>	618,939	413,617	100,205	8,375	1,022	79,828	1,576	2,324	11,992
	100.0%	66.8%	16.2%	1.4%	0.2%	12.9%	0.3%	0.4%	1.9%
<b>3</b>	665,832	112,355	311,444	10,085	863	191,478	933	3,461	35,213
	100.0%	16.9%	46.8%	1.5%	0.1%	28.8%	0.1%	0.5%	5.3%
<b>4</b>	629,713	290,184	152,733	14,800	1,287	147,575	1,988	2,836	18,310
	100.0%	46.1%	24.3%	2.4%	0.2%	23.4%	0.3%	0.5%	2.9%
<b>5</b>	669,854	134,313	402,461	8,606	1,085	84,397	1,052	3,655	34,285
	100.0%	20.1%	60.1%	1.3%	0.2%	12.6%	0.2%	0.5%	5.1%
<b>COUNTY TOTAL</b>	3,193,010	1,090,281	1,200,128	49,943	5,325	699,267	7,737	15,087	125,242
	100.0%	34.1%	37.6%	1.6%	0.2%	21.9%	0.2%	0.5%	3.9%

**Table 2. Difference from 2021 Target Supervisorial District Population of 638,602**

District	Number	Percent	Percentage Spread (Largest - Smallest)
<b>1</b>	-29,930	-4.69%	9.58%
<b>2</b>	-19,663	-3.08%	
<b>3</b>	27,230	4.26%	
<b>4</b>	-8,889	-1.39%	
<b>5</b>	31,252	4.89%	

**Split Cities/Census Designated Places (CDPs) -**

Anaheim (3)

Garden Grove (2)

Irvine (2)

North Tustin CDP (2)

Orange (2)

Tustin (2)

Percent shares calculated using unrounded numbers, but table displays only to tenths; therefore, percents displayed may not sum to 100%.

Number in ( ) indicates number of Supervisorial Districts the city/CDP falls within.

In line with previous board direction and in order to expedite proposal packages for consideration by the board, Proposal 5A-Revision 1 with Technical Corrections includes the technical correction of city splits in unpopulated areas. The U.S. Census Bureau misassigned three (3) census blocks to the City of Tustin that are actually in the City of Santa Ana with a total of 260 population. Since the affected area is fully assigned to District 2, no correction is necessary.

**PROPOSAL 5A-Revision 1 with Technical Corrections  
County of Orange 2021 Redistricting**

**Table 3. Adjusted Citizen Voting Age Population (CVAP) by Race/Ethnicity, 2015-2019 5-Year Estimates**

District	Total Estimated CVAP	Hispanic or Latino of any Race	Non- Hispanic White	Non-Hispanic Black or African- American	Non-Hispanic American Indian or Alaska Native	Non- Hispanic Asian	Non-Hispanic Native Hawaiian or Other Pacific Islander	Non- Hispanic Two or More Races
<b>1</b>	433,147	73,545	211,298	7,074	1,161	127,291	1,284	10,297
	100.0%	17.0%	48.9%	1.6%	0.3%	29.5%	0.3%	2.4%
<b>2</b>	340,779	177,081	97,547	6,086	574	53,677	975	3,708
	100.0%	52.1%	28.7%	1.8%	0.2%	15.8%	0.3%	1.1%
<b>3</b>	434,246	60,429	261,471	7,194	613	92,357	518	10,975
	100.0%	13.9%	60.3%	1.7%	0.1%	21.3%	0.1%	2.5%
<b>4</b>	385,143	133,487	142,193	11,844	789	87,149	1,815	6,918
	100.0%	34.7%	37.0%	3.1%	0.2%	22.7%	0.5%	1.8%
<b>5</b>	472,361	66,373	334,052	7,357	796	50,918	975	11,155
	100.0%	14.1%	70.8%	1.6%	0.2%	10.8%	0.2%	2.4%
<b>COUNTY TOTAL</b>	2,065,676	510,915	1,046,561	39,555	3,933	411,392	5,567	43,053
	100.0%	24.8%	50.8%	1.9%	0.2%	20.0%	0.3%	2.1%

Source: Statewide Database 2015-2019 Citizen Voting Age Population, adjusted to reflect reallocated incarcerated persons, on 2020 Census Blocks, Revised 9/27/2021 <https://statewidedatabase.org/redistricting2021/counties.html>

Notes: Percentages are calculated from sum of individual categories, not Total Estimated CVAP.

Because this is a special tabulation of data and not part of the standard data products shown on the Census Bureau's data.census.gov website, these estimates are rounded. Therefore, individual categories may not exactly add to the total.

For example, the sum of each of the race groups for non-Hispanics may not be the same as the estimate given for non-Hispanics. These estimates will not match counts from the 2020 Census.

The original data source for the Citizen Voting Age Population (CVAP) is the American Community Survey (ACS). The ACS is an ongoing survey by the U.S. Census Bureau sent to approximately 250,000 households each month.

The ACS estimates used to develop these data were collected from January 1, 2015 to December 31, 2019 utilizing the 2010 Census block groups, which were disaggregated to the 2020 Census blocks by the Statewide Database.

For more information about the CVAP products, visit <https://www.census.gov/programs-surveys/decennial-census/about/voting-rights/cvap.html> and

[https://www2.census.gov/programs-surveys/decennial/rdo/technical-documentation/special-tabulation/CVAP\\_2015-2019\\_ACS\\_documentation.pdf](https://www2.census.gov/programs-surveys/decennial/rdo/technical-documentation/special-tabulation/CVAP_2015-2019_ACS_documentation.pdf)

**PROPOSAL 5A-Revision 1 with Technical Corrections  
County of Orange 2021 Redistricting**

**Table 4. Adjusted 2020 Census Population by District and 2020 Census Place****DISTRICT 1**

<b>Place</b>	<b>Total Population</b>	<b>Percent of District</b>
Cypress	50,235	8.3%
Fountain Valley	57,120	9.4%
Garden Grove*	135,704	22.3%
Huntington Beach	199,033	32.7%
La Palma	15,597	2.6%
Los Alamitos	11,795	1.9%
Midway City CDP	8,845	1.5%
Rossmoor CDP	10,634	1.7%
Seal Beach	25,283	4.2%
Unincorporated	3,343	0.5%
Westminster	91,083	15.0%
<b>District 1 Total</b>	<b>608,672</b>	<b>100.0%</b>

**DISTRICT 2**

<b>Place</b>	<b>Total Population</b>	<b>Percent of District</b>
Anaheim*	102,211	16.5%
Garden Grove*	36,642	5.9%
North Tustin CDP*	7,618	1.2%
Orange*	106,837	17.3%
Santa Ana	311,393	50.3%
Tustin*	49,457	8.0%
Unincorporated	4,781	0.8%
<b>District 2 Total</b>	<b>618,939</b>	<b>100.0%</b>

**DISTRICT 3**

<b>Place</b>	<b>Total Population</b>	<b>Percent of District</b>
Anaheim*	56,099	8.4%
Irvine*	216,560	32.5%
Lake Forest	85,965	12.9%
Mission Viejo	93,760	14.1%
Modjeska CDP	632	0.1%
North Tustin CDP*	18,131	2.7%
Orange*	33,354	5.0%
Rancho Santa Margarita	48,000	7.2%
Silverado CDP	932	0.1%
Trabuco Canyon CDP	1,020	0.2%
Tustin*	30,955	4.6%
Unincorporated	6,066	0.9%
Villa Park	5,850	0.9%
Williams Canyon CDP	93	0.0%
Yorba Linda	68,415	10.3%
<b>District 3 Total</b>	<b>665,832</b>	<b>100.0%</b>

**DISTRICT 4**

<b>Place</b>	<b>Total Population</b>	<b>Percent of District</b>
Anaheim*	189,443	30.1%
Brea	47,397	7.5%
Buena Park	84,187	13.4%
Fullerton	143,930	22.9%
La Habra	63,234	10.0%
Placentia	51,925	8.2%
Stanton	38,067	6.0%
Unincorporated	11,530	1.8%
<b>District 4 Total</b>	<b>629,713</b>	<b>100.0%</b>

**DISTRICT 5**

<b>Place</b>	<b>Total Population</b>	<b>Percent of District</b>
Aliso Viejo	52,222	7.8%
Costa Mesa	112,139	16.7%
Coto de Caza CDP	14,723	2.2%
Dana Point	33,144	4.9%
Irvine*	91,398	13.6%
Ladera Ranch CDP	26,188	3.9%
Laguna Beach	23,061	3.4%
Laguna Hills	31,399	4.7%
Laguna Niguel	64,417	9.6%
Laguna Woods	17,658	2.6%
Las Flores CDP	6,004	0.9%
Newport Beach	85,338	12.7%
Rancho Mission Viejo CDP	10,385	1.6%
San Clemente	64,384	9.6%
San Juan Capistrano	35,271	5.3%
Unincorporated	2,123	0.3%
<b>District 5 Total</b>	<b>669,854</b>	<b>100.0%</b>

\*City/CDP split by proposed district.

Percent shares calculated using unrounded numbers, but table displays only to tenths; therefore, percents displayed may not sum to 100%.

In line with previous board direction and in order to expedite proposal packages for consideration by the board, Proposal 5A-Revision 1 with Technical Corrections includes the technical correction of city splits in unpopulated areas.

**PROPOSAL 5A-Revision 1 with Technical Corrections  
County of Orange 2021 Redistricting**

**Table 5. Adjusted 2020 Census Population 18 Years and Over by Race/Ethnicity**

District	Total Population 18 and Over	Hispanic or Latino of any Race	Non- Hispanic White	Non- Hispanic Black or African- American	Non-Hispanic American Indian or Alaska Native	Non- Hispanic Asian	Non-Hispanic Native Hawaiian or Other Pacific Islander	Non- Hispanic Some Other Race	Non- Hispanic Two or More Races
<b>1</b>	492,851	101,722	201,837	6,649	934	160,998	1,775	2,208	16,728
	100.0%	20.6%	41.0%	1.3%	0.2%	32.7%	0.4%	0.4%	3.4%
<b>2</b>	474,045	297,479	88,989	7,137	865	68,152	1,241	1,602	8,580
	100.0%	62.8%	18.8%	1.5%	0.2%	14.4%	0.3%	0.3%	1.8%
<b>3</b>	521,046	80,692	259,493	8,076	666	147,766	757	2,511	21,085
	100.0%	15.5%	49.8%	1.5%	0.1%	28.4%	0.1%	0.5%	4.0%
<b>4</b>	491,691	208,051	133,272	12,057	1,082	121,344	1,598	2,052	12,235
	100.0%	42.3%	27.1%	2.5%	0.2%	24.7%	0.3%	0.4%	2.5%
<b>5</b>	546,046	99,573	339,812	7,548	955	71,603	833	2,757	22,965
	100.0%	18.2%	62.2%	1.4%	0.2%	13.1%	0.2%	0.5%	4.2%
<b>COUNTY TOTAL</b>	2,525,679	787,517	1,023,403	41,467	4,502	569,863	6,204	11,130	81,593
	100.0%	31.2%	40.5%	1.6%	0.2%	22.6%	0.2%	0.4%	3.2%

Percent shares calculated using unrounded numbers, but table displays only to tenths; therefore, percents displayed may not sum to 100%.

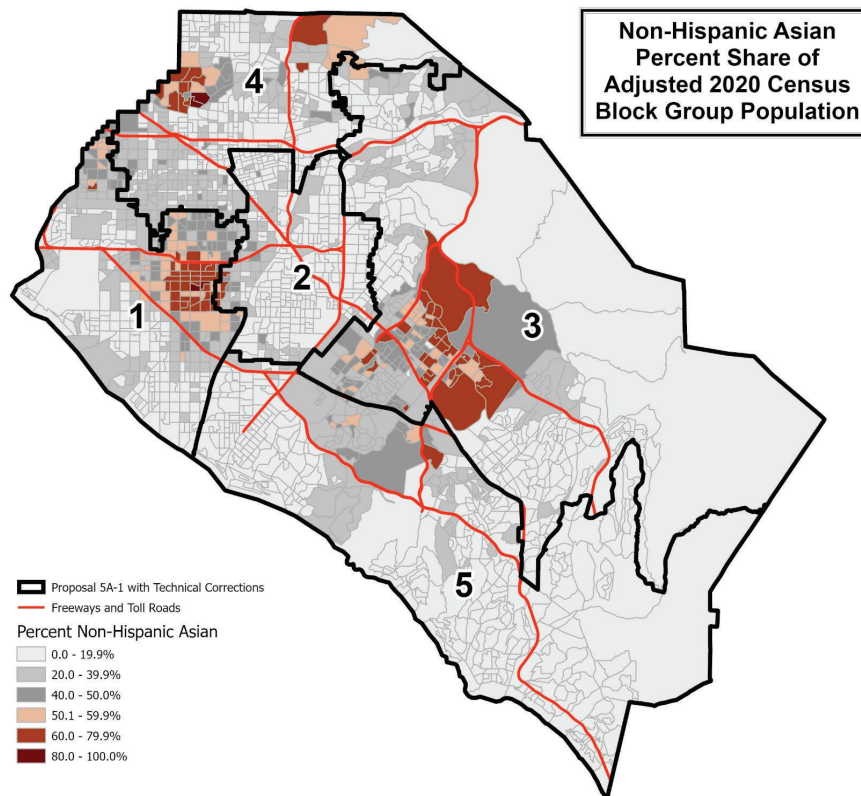
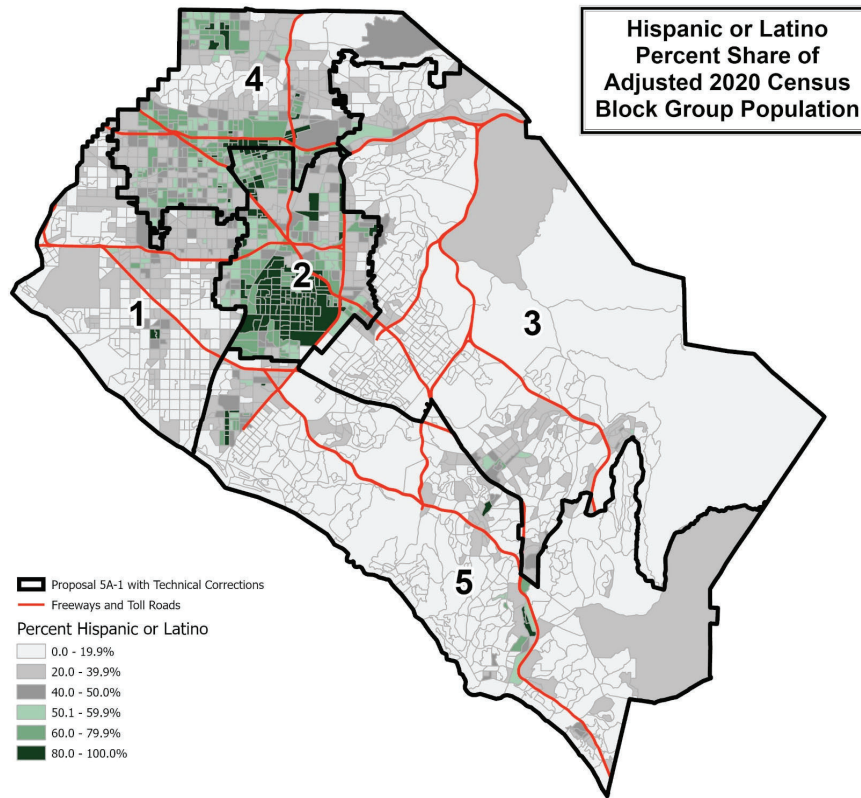
Source: Statewide Database; Adjusted, incarcerated persons reallocated P.L. 94-171 2020 Redistricting Data, Revised 9/27/2021

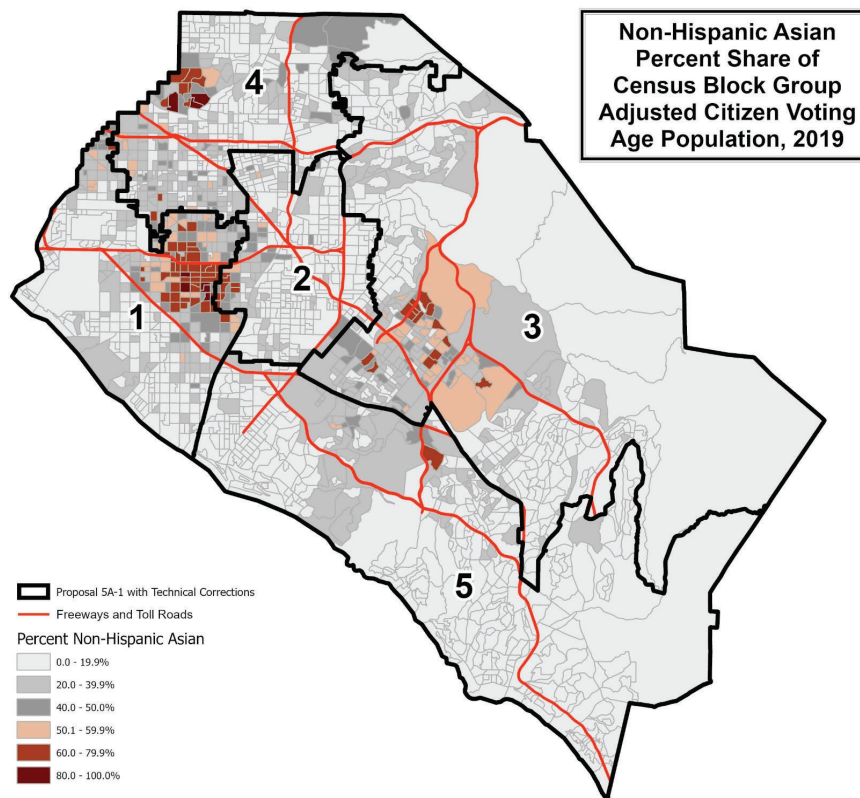
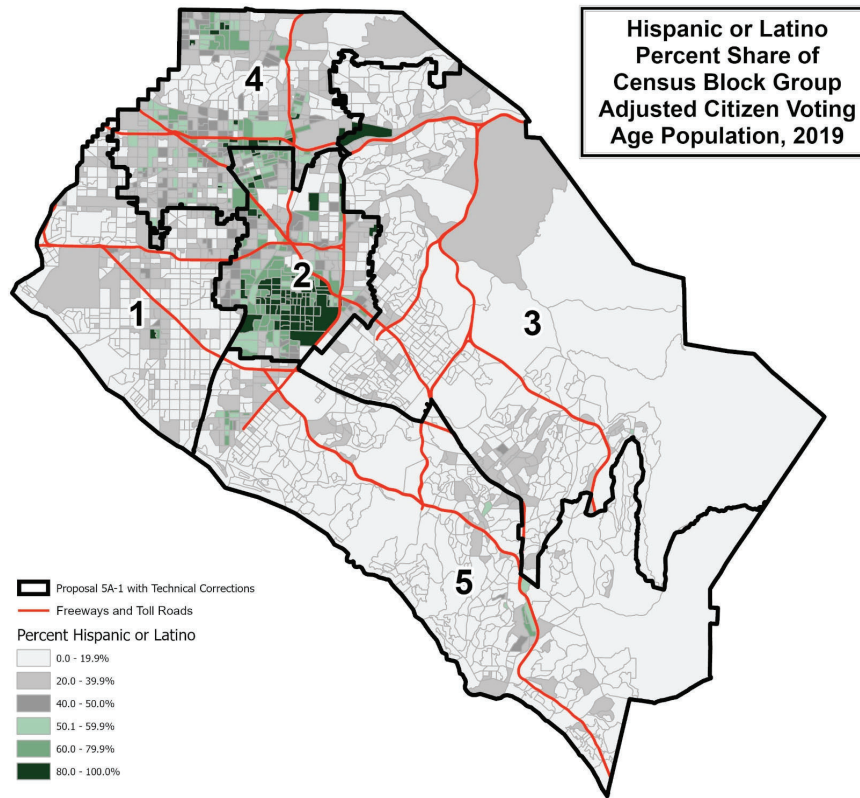


**PROPOSAL 5A-Revision 1 with Technical Corrections**

Contact Name: LaShe Rodriguez  
Organization: OC Board of Supervisors, 4th District  
Submitted Description: "Keep communities of interest whole."

Notes: In line with previous board direction and in order to expedite proposal packages for consideration by the board, Proposal 5A-Revision 1 with Technical Corrections includes the correction of city splits in unpopulated areas. Three unpopulated census blocks in the City of Mission Viejo were reassigned from District 5 to District 3 to eliminate unpopulated split for the City of Mission Viejo: 060590423152014, 060590423151001, and 060590423073000.

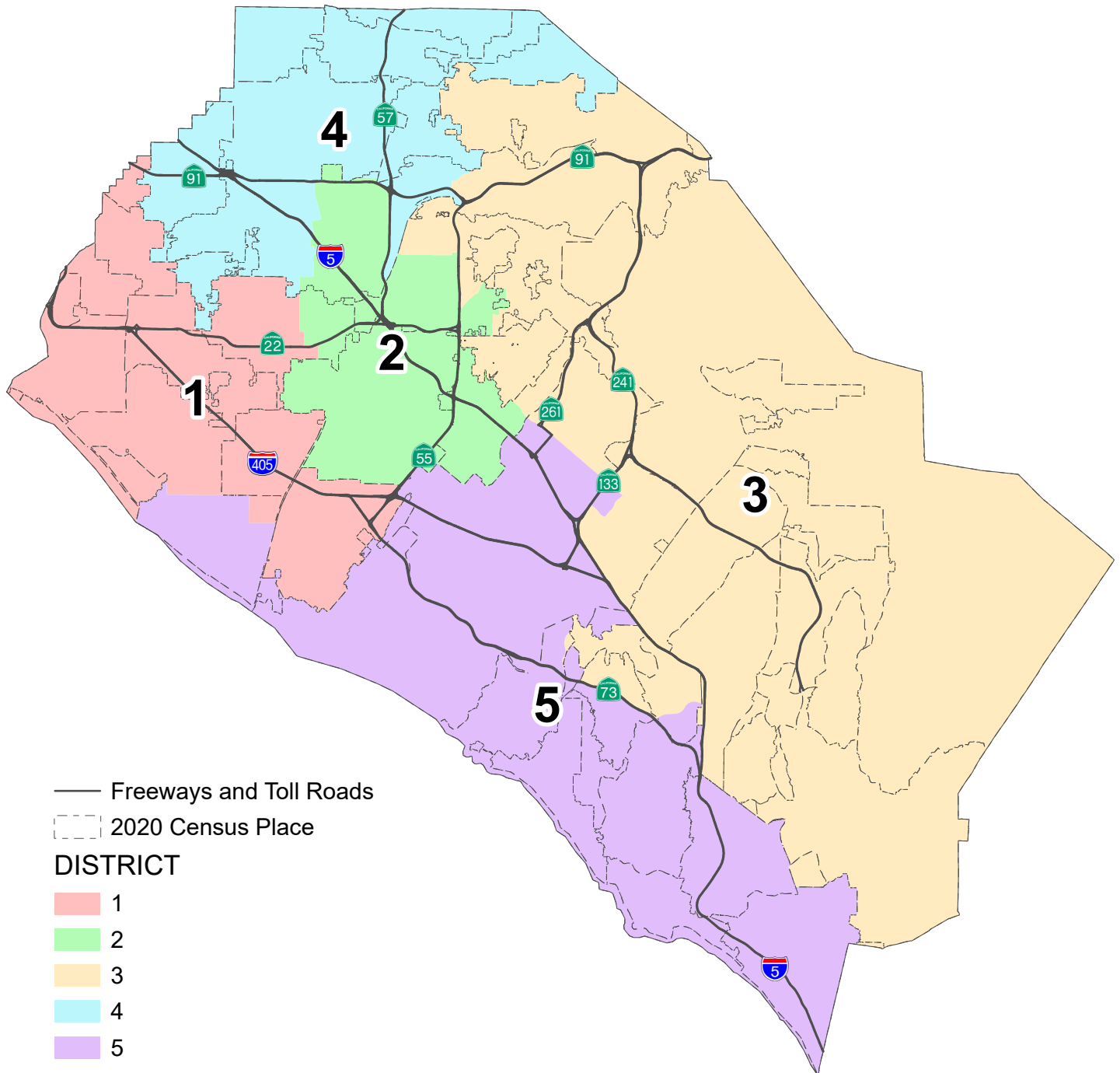




This page is intentionally left blank

County of Orange 2021 Redistricting

Proposal 4C-1-A Map



This page is intentionally left blank

**PROPOSAL 4C-Revision 1-A  
County of Orange 2021 Redistricting**

**Table 1. Adjusted 2020 Census Total Population by Race/Ethnicity**

District	Total Population	Hispanic or Latino of any Race	Non-Hispanic White	Non-Hispanic Black or African-American	Non-Hispanic American Indian or Alaska Native	Non-Hispanic Asian	Non-Hispanic Native Hawaiian or Other Pacific Islander	Non-Hispanic Some Other Race	Non-Hispanic Two or More Races
<b>1</b>	629,145	163,472	233,410	8,702	1,091	191,768	2,399	2,893	25,410
	100.0%	26.0%	37.1%	1.4%	0.2%	30.5%	0.4%	0.5%	4.0%
<b>2</b>	625,085	416,497	94,197	8,510	1,019	89,043	1,579	2,314	11,926
	100.0%	66.6%	15.1%	1.4%	0.2%	14.2%	0.3%	0.4%	1.9%
<b>3</b>	652,148	125,598	340,992	8,458	908	138,254	917	3,189	33,832
	100.0%	19.3%	52.3%	1.3%	0.1%	21.2%	0.1%	0.5%	5.2%
<b>4</b>	620,089	282,542	151,876	14,651	1,252	146,809	1,962	2,817	18,180
	100.0%	45.6%	24.5%	2.4%	0.2%	23.7%	0.3%	0.5%	2.9%
<b>5</b>	666,543	102,172	379,653	9,622	1,055	133,393	880	3,874	35,894
	100.0%	15.3%	57.0%	1.4%	0.2%	20.0%	0.1%	0.6%	5.4%
<b>COUNTY TOTAL</b>	3,193,010	1,090,281	1,200,128	49,943	5,325	699,267	7,737	15,087	125,242
	100.0%	34.1%	37.6%	1.6%	0.2%	21.9%	0.2%	0.5%	3.9%

**Table 2. Difference from 2021 Target Supervisorial District Population of 638,602**

District	Number	Percent	Percentage Spread (Largest - Smallest)
<b>1</b>	-9,457	-1.48%	7.27%
<b>2</b>	-13,517	-2.12%	
<b>3</b>	13,546	2.12%	
<b>4</b>	-18,513	-2.90%	
<b>5</b>	27,941	4.38%	

**Split Cities/Census Designated Places (CDPs) -**

Aliso Viejo (2)  
 Anaheim (3)  
 Garden Grove (2)  
 Huntington Beach (2)  
 Irvine (2)  
 Laguna Hills (2)  
 Orange (2)  
 Tustin (2)

Percent shares calculated using unrounded numbers, but table displays only to tenths; therefore, percents displayed may not sum to 100%.  
 Number in ( ) indicates number of Supervisorial Districts the city/CDP falls within.

The U.S. Census Bureau misassigned three (3) census blocks to the City of Tustin that are actually in the City of Santa Ana with a total of 260 population. Since the affected area is fully assigned to District 2, no correction is necessary.

**PROPOSAL 4C-Revision 1-A**  
**County of Orange 2021 Redistricting**

**Table 3. Adjusted Citizen Voting Age Population (CVAP) by Race/Ethnicity, 2015-2019 5-Year Estimates**

District	Total Estimated CVAP	Hispanic or Latino of any Race	Non- Hispanic White	Non-Hispanic Black or African- American	Non-Hispanic American Indian or Alaska Native	Non- Hispanic Asian	Non-Hispanic Native Hawaiian or Other Pacific Islander	Non- Hispanic Two or More Races
<b>1</b>	439,101	81,259	211,019	8,152	1,150	124,571	1,569	10,075
	100.0%	18.6%	48.2%	1.9%	0.3%	28.5%	0.4%	2.3%
<b>2</b>	342,733	179,484	91,464	6,004	553	59,128	913	4,062
	100.0%	52.5%	26.8%	1.8%	0.2%	17.3%	0.3%	1.2%
<b>3</b>	441,025	65,141	284,155	6,712	765	73,274	489	9,849
	100.0%	14.8%	64.5%	1.5%	0.2%	16.6%	0.1%	2.2%
<b>4</b>	380,535	130,152	141,349	11,977	789	86,734	1,845	6,863
	100.0%	34.3%	37.2%	3.2%	0.2%	22.8%	0.5%	1.8%
<b>5</b>	462,282	54,879	318,574	6,710	676	67,685	751	12,204
	100.0%	11.9%	69.0%	1.5%	0.1%	14.7%	0.2%	2.6%
<b>COUNTY TOTAL</b>	2,065,676	510,915	1,046,561	39,555	3,933	411,392	5,567	43,053
	100.0%	24.8%	50.8%	1.9%	0.2%	20.0%	0.3%	2.1%

Source: Statewide Database 2015-2019 Citizen Voting Age Population, adjusted to reflect reallocated incarcerated persons, on 2020 Census Blocks, Revised 9/27/2021 <https://statewidedatabase.org/redistricting2021/counties.html>

Notes: Percentages are calculated from sum of individual categories, not Total Estimated CVAP.

Because this is a special tabulation of data and not part of the standard data products shown on the Census Bureau's data.census.gov website, these estimates are rounded. Therefore, individual categories may not exactly add to the total.

For example, the sum of each of the race groups for non-Hispanics may not be the same as the estimate given for non-Hispanics. These estimates will not match counts from the 2020 Census.

The original data source for the Citizen Voting Age Population (CVAP) is the American Community Survey (ACS). The ACS is an ongoing survey by the U.S. Census Bureau sent to approximately 250,000 households each month.

The ACS estimates used to develop these data were collected from January 1, 2015 to December 31, 2019 utilizing the 2010 Census block groups, which were disaggregated to the 2020 Census blocks by the Statewide Database.

For more information about the CVAP products, visit <https://www.census.gov/programs-surveys/decennial-census/about/voting-rights/cvap.html> and

[https://www2.census.gov/programs-surveys/decennial/rdo/technical-documentation/special-tabulation/CVAP\\_2015-2019\\_ACS\\_documentation.pdf](https://www2.census.gov/programs-surveys/decennial/rdo/technical-documentation/special-tabulation/CVAP_2015-2019_ACS_documentation.pdf)



**PROPOSAL 4C-Revision 1-A**  
**County of Orange 2021 Redistricting**

**Table 4. Adjusted 2020 Census Population by District and 2020 Census Place****DISTRICT 1**

<b>Place</b>	<b>Total Population</b>	<b>Percent of District</b>
Costa Mesa	112,139	17.8%
Cypress	50,235	8.0%
Fountain Valley	57,120	9.1%
Garden Grove*	124,106	19.7%
Huntington Beach*	120,922	19.2%
La Palma	15,597	2.5%
Los Alamitos	11,795	1.9%
Midway City CDP	8,845	1.4%
Rossmoor CDP	10,634	1.7%
Seal Beach	25,283	4.0%
Unincorporated	1,386	0.2%
Westminster	91,083	14.5%
<b>District 1 Total</b>	<b>629,145</b>	<b>100.0%</b>

**DISTRICT 2**

<b>Place</b>	<b>Total Population</b>	<b>Percent of District</b>
Anaheim*	113,792	18.2%
Garden Grove*	48,240	7.7%
Orange*	79,088	12.7%
Santa Ana	311,393	49.8%
Tustin*	68,280	10.9%
Unincorporated	4,292	0.7%
<b>District 2 Total</b>	<b>625,085</b>	<b>100.0%</b>

**DISTRICT 3**

<b>Place</b>	<b>Total Population</b>	<b>Percent of District</b>
Aliso Viejo*	19,822	3.0%
Anaheim*	56,099	8.6%
Coto de Caza CDP	14,723	2.3%
Irvine*	68,622	10.5%
Ladera Ranch CDP	26,188	4.0%
Laguna Hills*	22,343	3.4%
Laguna Woods	17,658	2.7%
Lake Forest	85,965	13.2%
Las Flores CDP	6,004	0.9%
Mission Viejo	93,760	14.4%
Modjeska CDP	632	0.1%
North Tustin CDP	25,749	3.9%
Orange*	61,103	9.4%
Rancho Mission Viejo CDP	10,385	1.6%
Rancho Santa Margarita	48,000	7.4%
Silverado CDP	932	0.1%
Trabuco Canyon CDP	1,020	0.2%
Tustin*	12,132	1.9%
Unincorporated	6,653	1.0%
Villa Park	5,850	0.9%
Williams Canyon CDP	93	0.0%
Yorba Linda	68,415	10.5%
<b>District 3 Total</b>	<b>652,148</b>	<b>100.0%</b>

**DISTRICT 4**

<b>Place</b>	<b>Total Population</b>	<b>Percent of District</b>
Anaheim*	177,862	28.7%
Brea	47,397	7.6%
Buena Park	84,187	13.6%
Fullerton	143,930	23.2%
La Habra	63,234	10.2%
Placentia	51,925	8.4%
Stanton	38,067	6.1%
Unincorporated	13,487	2.2%
<b>District 4 Total</b>	<b>620,089</b>	<b>100.0%</b>

**DISTRICT 5**

<b>Place</b>	<b>Total Population</b>	<b>Percent of District</b>
Aliso Viejo*	32,400	4.9%
Dana Point	33,144	5.0%
Huntington Beach*	78,111	11.7%
Irvine*	239,336	35.9%
Laguna Beach	23,061	3.5%
Laguna Hills*	9,056	1.4%
Laguna Niguel	64,417	9.7%
Newport Beach	85,338	12.8%
San Clemente	64,384	9.7%
San Juan Capistrano	35,271	5.3%
Unincorporated	2,025	0.3%
<b>District 5 Total</b>	<b>666,543</b>	<b>100.0%</b>

\*City split by proposed district.

Percent shares calculated using unrounded numbers, but table displays only to tenths; therefore, percents displayed may not sum to 100%.

Source: Statewide Database; Adjusted, incarcerated persons reallocated P.L. 94-171 2020 Redistricting Data, Revised 9/27/2021

**PROPOSAL 4C-Revision 1-A**  
**County of Orange 2021 Redistricting**

**Table 5. Adjusted 2020 Census Population 18 Years and Over by Race/Ethnicity**

District	Total Population 18 and Over	Hispanic or Latino of any Race	Non- Hispanic White	Non- Hispanic Black or African- American	Non-Hispanic American Indian or Alaska Native	Non- Hispanic Asian	Non-Hispanic Native Hawaiian or Other Pacific Islander	Non- Hispanic Some Other Race	Non- Hispanic Two or More Races
<b>1</b>	507,844	118,678	202,031	7,176	944	158,052	1,931	2,247	16,785
	100.0%	23.4%	39.8%	1.4%	0.2%	31.1%	0.4%	0.4%	3.3%
<b>2</b>	478,351	299,801	83,851	7,221	862	75,295	1,260	1,598	8,463
	100.0%	62.7%	17.5%	1.5%	0.2%	15.7%	0.3%	0.3%	1.8%
<b>3</b>	511,407	89,460	282,903	7,032	746	108,003	739	2,287	20,237
	100.0%	17.5%	55.3%	1.4%	0.1%	21.1%	0.1%	0.4%	4.0%
<b>4</b>	484,521	202,596	132,490	11,938	1,054	120,674	1,570	2,040	12,159
	100.0%	41.8%	27.3%	2.5%	0.2%	24.9%	0.3%	0.4%	2.5%
<b>5</b>	543,556	76,982	322,128	8,100	896	107,839	704	2,958	23,949
	100.0%	14.2%	59.3%	1.5%	0.2%	19.8%	0.1%	0.5%	4.4%
<b>COUNTY TOTAL</b>	2,525,679	787,517	1,023,403	41,467	4,502	569,863	6,204	11,130	81,593
	100.0%	31.2%	40.5%	1.6%	0.2%	22.6%	0.2%	0.4%	3.2%

Percent shares calculated using unrounded numbers, but table displays only to tenths; therefore, percents displayed may not sum to 100%.

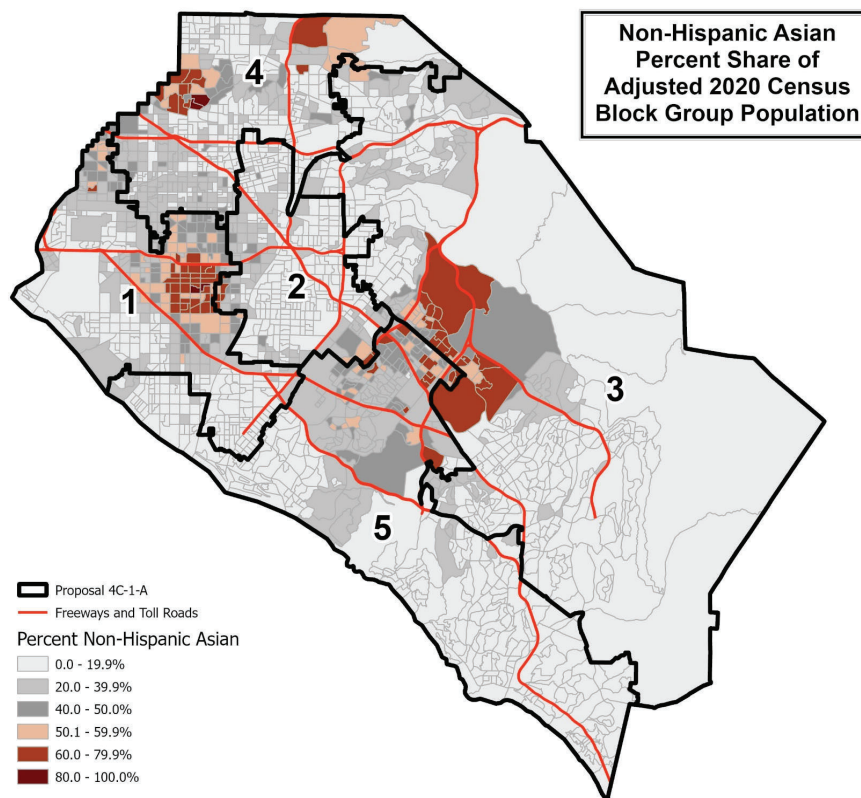
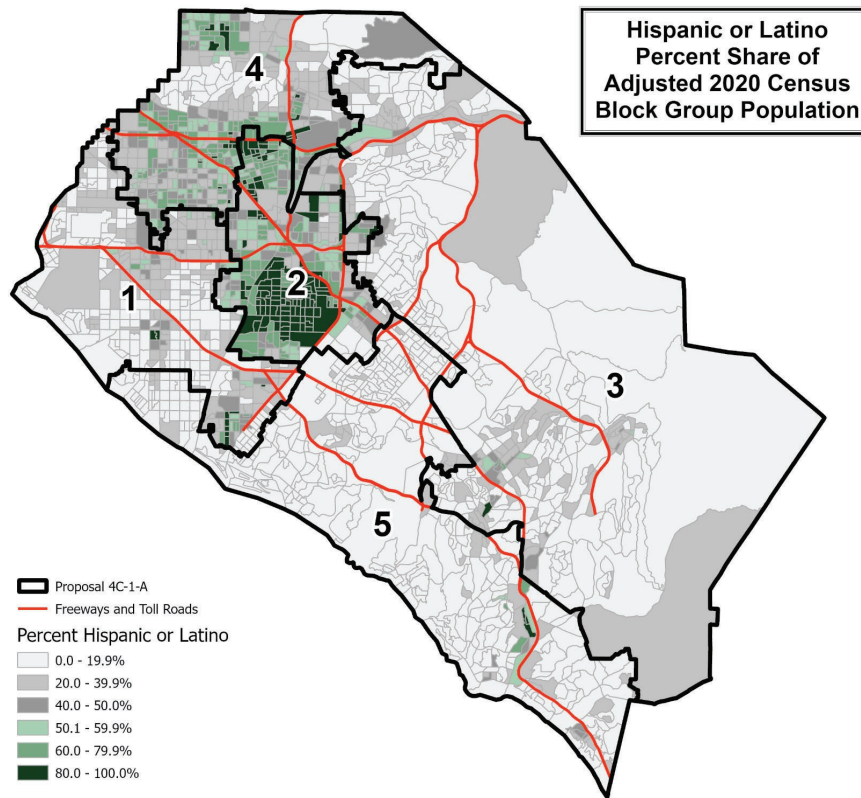
Source: Statewide Database; Adjusted, incarcerated persons reallocated P.L. 94-171 2020 Redistricting Data, Revised 9/27/2021

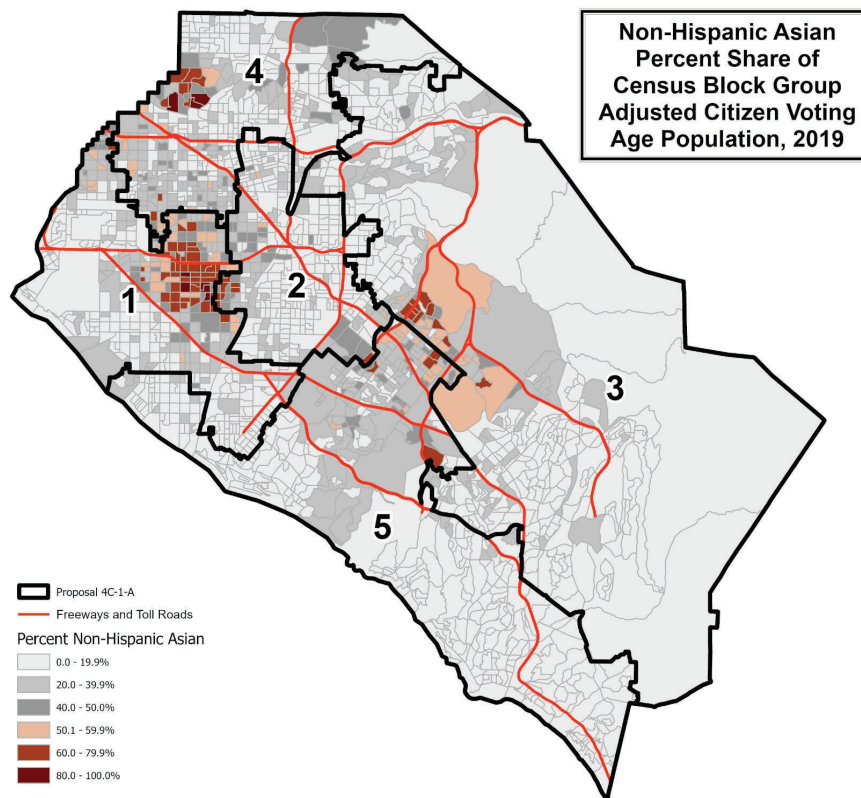
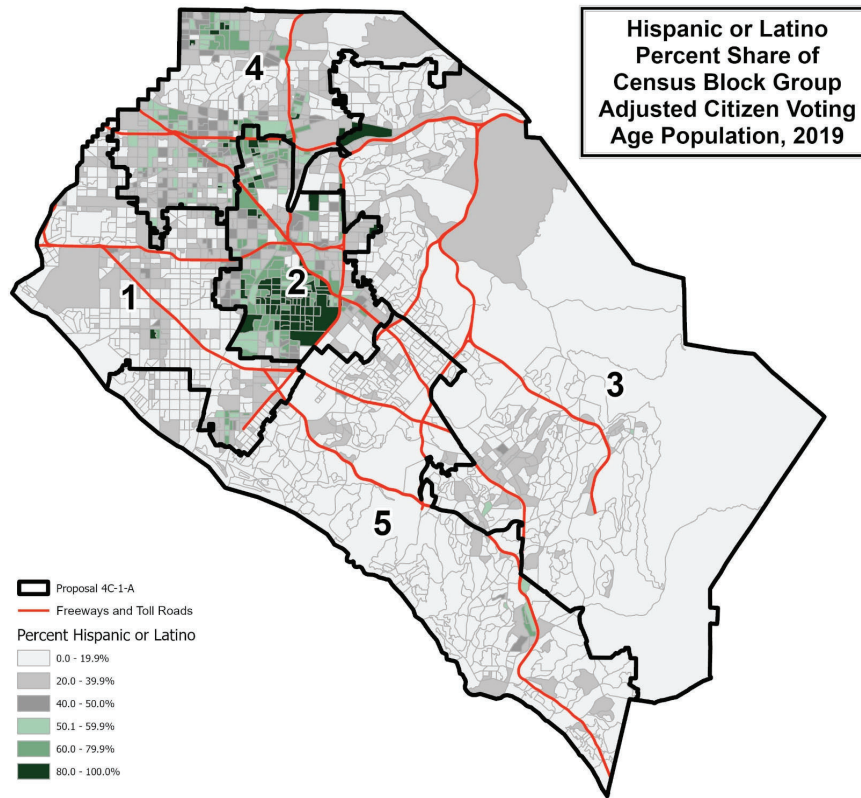
**PROPOSAL 4C-Revision 1-A**

Contact Name: Board of Supervisors  
Organization:  
Submitted Description: 4C-Rev. 1-A

Notes: November 16, 2021 Board-authorized/Chairman Do recommended revisions:  
(1) move 26 residents in Santa Ana from D1 to D2;  
(2) move 622 residents in Newport Beach from D1 to D5;  
(3) move 738 residents in Yorba Linda from D4 to D3;  
(4) move 7 residents in Costa Mesa from D5 to D1;  
(5) move 1437 residents of Laguna Beach from D3 to D5; and  
(6) move 1960 residents of Placentia from D3 to D4.

One unpopulated census block (060590218202002) the U.S. Census Bureau assigned to the City of Placentia is actually split by both Placentia and Yorba Linda per the OC Surveyor city boundary. This block was assigned to District 3 to ensure contiguity for the full City of Yorba Linda and District 3 and Placentia is not included as a split city.

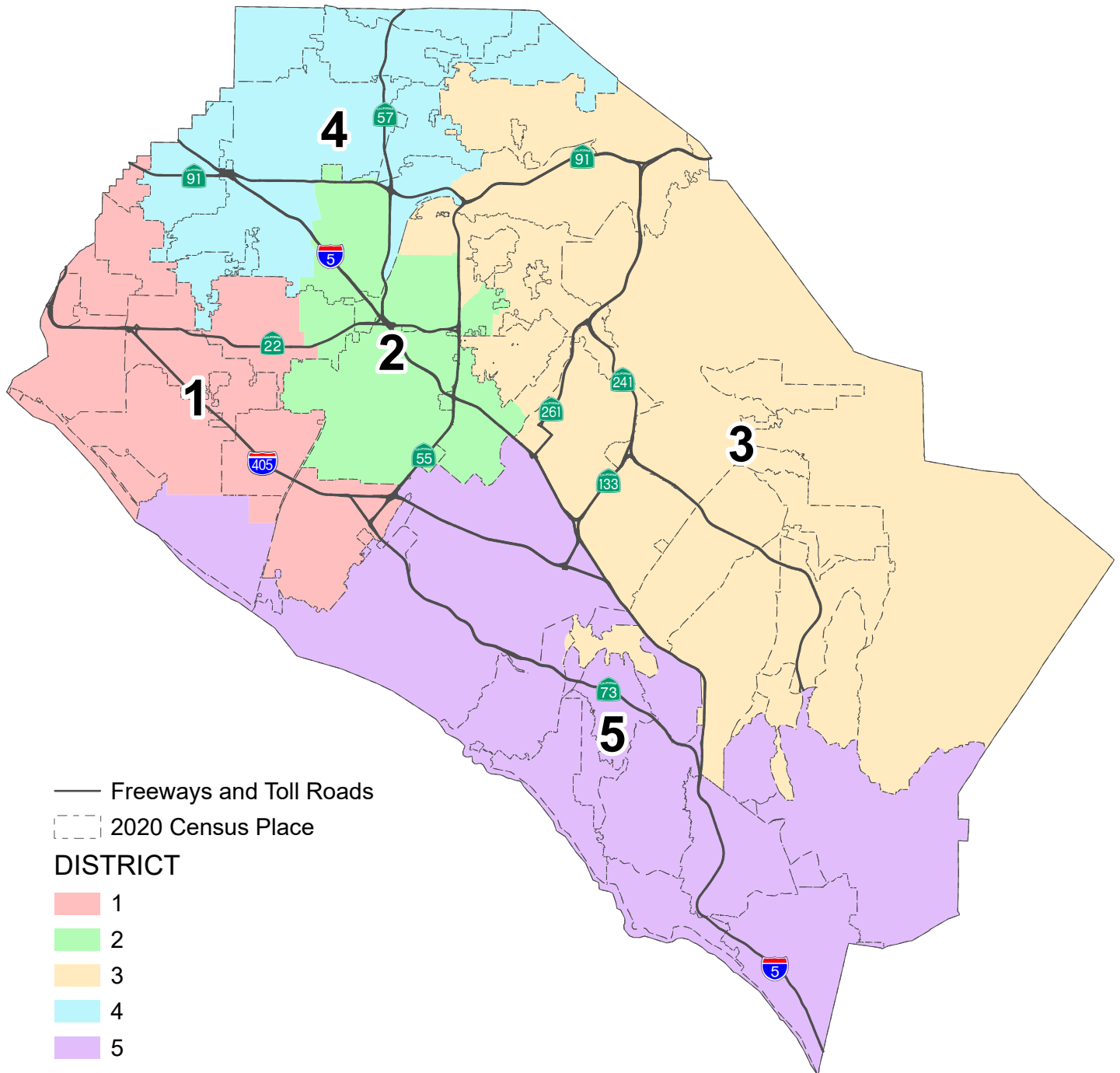




This page is intentionally left blank

County of Orange 2021 Redistricting

Proposal 4C-1-B Map



This page is intentionally left blank



**PROPOSAL 4C-Revision 1-B**  
**County of Orange 2021 Redistricting**

**Table 1. Adjusted 2020 Census Total Population by Race/Ethnicity**

District	Total Population	Hispanic or Latino of any Race	Non-Hispanic White	Non-Hispanic Black or African-American	Non-Hispanic American Indian or Alaska Native	Non-Hispanic Asian	Non-Hispanic Native Hawaiian or Other Pacific Islander	Non-Hispanic Some Other Race	Non-Hispanic Two or More Races
<b>1</b>	629,145	163,472	233,410	8,702	1,091	191,768	2,399	2,893	25,410
	100.0%	26.0%	37.1%	1.4%	0.2%	30.5%	0.4%	0.5%	4.0%
<b>2</b>	625,085	416,497	94,197	8,510	1,019	89,043	1,579	2,314	11,926
	100.0%	66.6%	15.1%	1.4%	0.2%	14.2%	0.3%	0.4%	1.9%
<b>3</b>	630,771	116,097	311,563	8,741	859	157,414	879	3,029	32,189
	100.0%	18.4%	49.4%	1.4%	0.1%	25.0%	0.1%	0.5%	5.1%
<b>4</b>	620,089	282,542	151,876	14,651	1,252	146,809	1,962	2,817	18,180
	100.0%	45.6%	24.5%	2.4%	0.2%	23.7%	0.3%	0.5%	2.9%
<b>5</b>	687,920	111,673	409,082	9,339	1,104	114,233	918	4,034	37,537
	100.0%	16.2%	59.5%	1.4%	0.2%	16.6%	0.1%	0.6%	5.5%
<b>COUNTY TOTAL</b>	3,193,010	1,090,281	1,200,128	49,943	5,325	699,267	7,737	15,087	125,242
	100.0%	34.1%	37.6%	1.6%	0.2%	21.9%	0.2%	0.5%	3.9%

**Table 2. Difference from 2021 Target Supervisorial District Population of 638,602**

District	Number	Percent	Percentage Spread (Largest - Smallest)
<b>1</b>	-9,457	-1.48%	10.62%
<b>2</b>	-13,517	-2.12%	
<b>3</b>	-7,831	-1.23%	
<b>4</b>	-18,513	-2.90%	
<b>5</b>	49,318	7.72%	

**Split Cities/Census Designated Places (CDPs) -**

Anaheim (3)  
 Garden Grove (2)  
 Huntington Beach (2)  
 Irvine (2)  
 Orange (2)  
 Tustin (2)

Percent shares calculated using unrounded numbers, but table displays only to tenths; therefore, percents displayed may not sum to 100%.

Number in ( ) indicates number of Supervisorial Districts the city/CDP falls within.

The U.S. Census Bureau misassigned three (3) census blocks to the City of Tustin that are actually in the City of Santa Ana with a total of 260 population. Since the affected area is fully assigned to District 2, no correction is necessary.

Revisions authorized by the Board of Supervisors on November 16, 2021 to move Laguna Hills from District 3 into District 5 created a non-contiguous District 3 with Laguna Woods detached from District 3 by Laguna Hills.

**PROPOSAL 4C-Revision 1-B**  
**County of Orange 2021 Redistricting**

**Table 3. Adjusted Citizen Voting Age Population (CVAP) by Race/Ethnicity, 2015-2019 5-Year Estimates**

District	Total Estimated CVAP	Hispanic or Latino of any Race	Non- Hispanic White	Non-Hispanic Black or African- American	Non-Hispanic American Indian or Alaska Native	Non- Hispanic Asian	Non-Hispanic Native Hawaiian or Other Pacific Islander	Non- Hispanic Two or More Races
<b>1</b>	439,101	81,259	211,019	8,152	1,150	124,571	1,569	10,075
	100.0%	18.6%	48.2%	1.9%	0.3%	28.5%	0.4%	2.3%
<b>2</b>	342,733	179,484	91,464	6,004	553	59,128	913	4,062
	100.0%	52.5%	26.8%	1.8%	0.2%	17.3%	0.3%	1.2%
<b>3</b>	420,583	60,035	264,309	6,465	590	78,769	416	9,203
	100.0%	14.3%	63.0%	1.5%	0.1%	18.8%	0.1%	2.2%
<b>4</b>	380,535	130,152	141,349	11,977	789	86,734	1,845	6,863
	100.0%	34.3%	37.2%	3.2%	0.2%	22.8%	0.5%	1.8%
<b>5</b>	482,724	59,985	338,420	6,957	851	62,190	824	12,850
	100.0%	12.4%	70.2%	1.4%	0.2%	12.9%	0.2%	2.7%
<b>COUNTY TOTAL</b>	2,065,676	510,915	1,046,561	39,555	3,933	411,392	5,567	43,053
	100.0%	24.8%	50.8%	1.9%	0.2%	20.0%	0.3%	2.1%

Source: Statewide Database 2015-2019 Citizen Voting Age Population, adjusted to reflect reallocated incarcerated persons, on 2020 Census Blocks, Revised 9/27/2021 <https://statewidedatabase.org/redistricting2021/counties.html>

Notes: Percentages are calculated from sum of individual categories, not Total Estimated CVAP.

Because this is a special tabulation of data and not part of the standard data products shown on the Census Bureau's data.census.gov website, these estimates are rounded. Therefore, individual categories may not exactly add to the total.

For example, the sum of each of the race groups for non-Hispanics may not be the same as the estimate given for non-Hispanics. These estimates will not match counts from the 2020 Census.

The original data source for the Citizen Voting Age Population (CVAP) is the American Community Survey (ACS). The ACS is an ongoing survey by the U.S. Census Bureau sent to approximately 250,000 households each month.

The ACS estimates used to develop these data were collected from January 1, 2015 to December 31, 2019 utilizing the 2010 Census block groups, which were disaggregated to the 2020 Census blocks by the Statewide Database.

For more information about the CVAP products, visit <https://www.census.gov/programs-surveys/decennial-census/about/voting-rights/cvap.html> and

[https://www2.census.gov/programs-surveys/decennial/rdo/technical-documentation/special-tabulation/CVAP\\_2015-2019\\_ACS\\_documentation.pdf](https://www2.census.gov/programs-surveys/decennial/rdo/technical-documentation/special-tabulation/CVAP_2015-2019_ACS_documentation.pdf)

**PROPOSAL 4C-Revision 1-B**  
**County of Orange 2021 Redistricting**

**Table 4. Adjusted 2020 Census Population by District and 2020 Census Place****DISTRICT 1**

Place	Total Population	Percent of District
Costa Mesa	112,139	17.8%
Cypress	50,235	8.0%
Fountain Valley	57,120	9.1%
Garden Grove*	124,106	19.7%
Huntington Beach*	120,922	19.2%
La Palma	15,597	2.5%
Los Alamitos	11,795	1.9%
Midway City CDP	8,845	1.4%
Rossmoor CDP	10,634	1.7%
Seal Beach	25,283	4.0%
Unincorporated	1,386	0.2%
Westminster	91,083	14.5%
<b>District 1 Total</b>	<b>629,145</b>	<b>100.0%</b>

**DISTRICT 2**

Place	Total Population	Percent of District
Anaheim*	113,792	18.2%
Garden Grove*	48,240	7.7%
Orange*	79,088	12.7%
Santa Ana	311,393	49.8%
Tustin*	68,280	10.9%
Unincorporated	4,292	0.7%
<b>District 2 Total</b>	<b>625,085</b>	<b>100.0%</b>

**DISTRICT 3**

Place	Total Population	Percent of District
Anaheim*	56,099	8.9%
Coto de Caza CDP	14,723	2.3%
Irvine*	126,081	20.0%
Laguna Woods	17,658	2.8%
Lake Forest	85,965	13.6%
Las Flores CDP	6,004	1.0%
Mission Viejo	93,760	14.9%
Modjeska CDP	632	0.1%
North Tustin CDP	25,749	4.1%
Orange*	61,103	9.7%
Rancho Santa Margarita	48,000	7.6%
Silverado CDP	932	0.1%
Trabuco Canyon CDP	1,020	0.2%
Tustin*	12,132	1.9%
Unincorporated	6,555	1.0%
Villa Park	5,850	0.9%
Williams Canyon CDP	93	0.0%
Yorba Linda	68,415	10.8%
<b>District 3 Total</b>	<b>630,771</b>	<b>100.0%</b>

**DISTRICT 4**

Place	Total Population	Percent of District
Anaheim*	177,862	28.7%
Brea	47,397	7.6%
Buena Park	84,187	13.6%
Fullerton	143,930	23.2%
La Habra	63,234	10.2%
Placentia	51,925	8.4%
Stanton	38,067	6.1%
Unincorporated	13,487	2.2%
<b>District 4 Total</b>	<b>620,089</b>	<b>100.0%</b>

**DISTRICT 5**

Place	Total Population	Percent of District
Aliso Viejo	52,222	7.6%
Dana Point	33,144	4.8%
Huntington Beach*	78,111	11.4%
Irvine*	181,877	26.4%
Ladera Ranch CDP	26,188	3.8%
Laguna Beach	23,061	3.4%
Laguna Hills	31,399	4.6%
Laguna Niguel	64,417	9.4%
Newport Beach	85,338	12.4%
Rancho Mission Viejo CDP	10,385	1.5%
San Clemente	64,384	9.4%
San Juan Capistrano	35,271	5.1%
Unincorporated	2,123	0.3%
<b>District 5 Total</b>	<b>687,920</b>	<b>100.0%</b>

\*City split by proposed district.

Percent shares calculated using unrounded numbers, but table displays only to tenths; therefore, percents displayed may not sum to 100%.

**PROPOSAL 4C-Revision 1-B**  
**County of Orange 2021 Redistricting**

**Table 5. Adjusted 2020 Census Population 18 Years and Over by Race/Ethnicity**

District	Total Population 18 and Over	Hispanic or Latino of any Race	Non- Hispanic White	Non- Hispanic Black or African- American	Non-Hispanic American Indian or Alaska Native	Non- Hispanic Asian	Non-Hispanic Native Hawaiian or Other Pacific Islander	Non- Hispanic Some Other Race	Non- Hispanic Two or More Races
<b>1</b>	507,844	118,678	202,031	7,176	944	158,052	1,931	2,247	16,785
	100.0%	23.4%	39.8%	1.4%	0.2%	31.1%	0.4%	0.4%	3.3%
<b>2</b>	478,351	299,801	83,851	7,221	862	75,295	1,260	1,598	8,463
	100.0%	62.7%	17.5%	1.5%	0.2%	15.7%	0.3%	0.3%	1.8%
<b>3</b>	496,181	83,198	261,231	7,125	682	121,766	706	2,186	19,287
	100.0%	16.8%	52.6%	1.4%	0.1%	24.5%	0.1%	0.4%	3.9%
<b>4</b>	484,521	202,596	132,490	11,938	1,054	120,674	1,570	2,040	12,159
	100.0%	41.8%	27.3%	2.5%	0.2%	24.9%	0.3%	0.4%	2.5%
<b>5</b>	558,782	83,244	343,800	8,007	960	94,076	737	3,059	24,899
	100.0%	14.9%	61.5%	1.4%	0.2%	16.8%	0.1%	0.5%	4.5%
<b>COUNTY TOTAL</b>	2,525,679	787,517	1,023,403	41,467	4,502	569,863	6,204	11,130	81,593
	100.0%	31.2%	40.5%	1.6%	0.2%	22.6%	0.2%	0.4%	3.2%

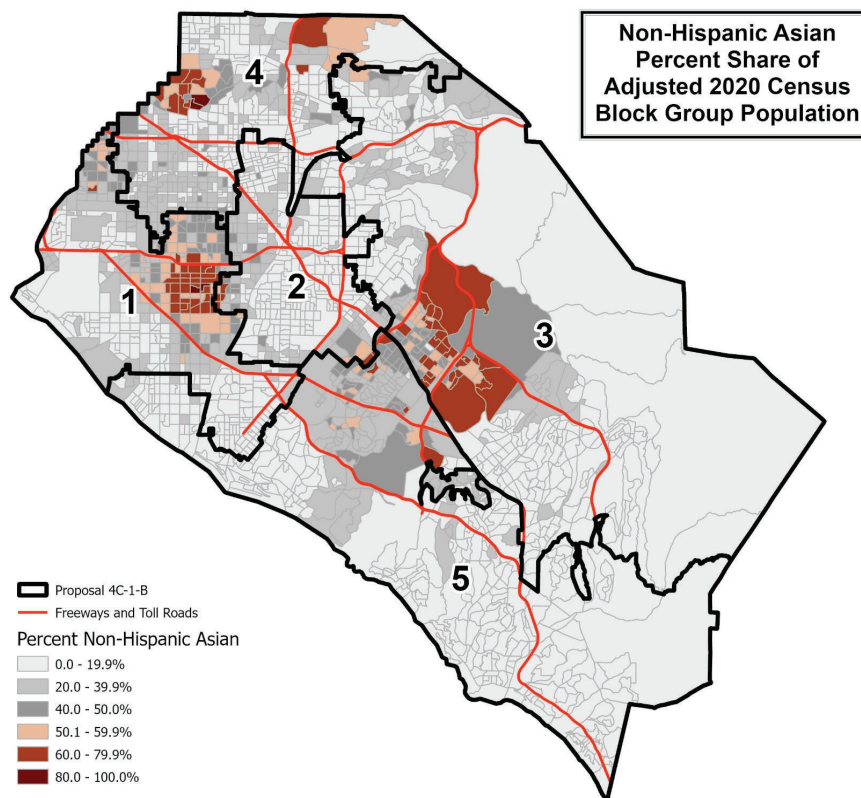
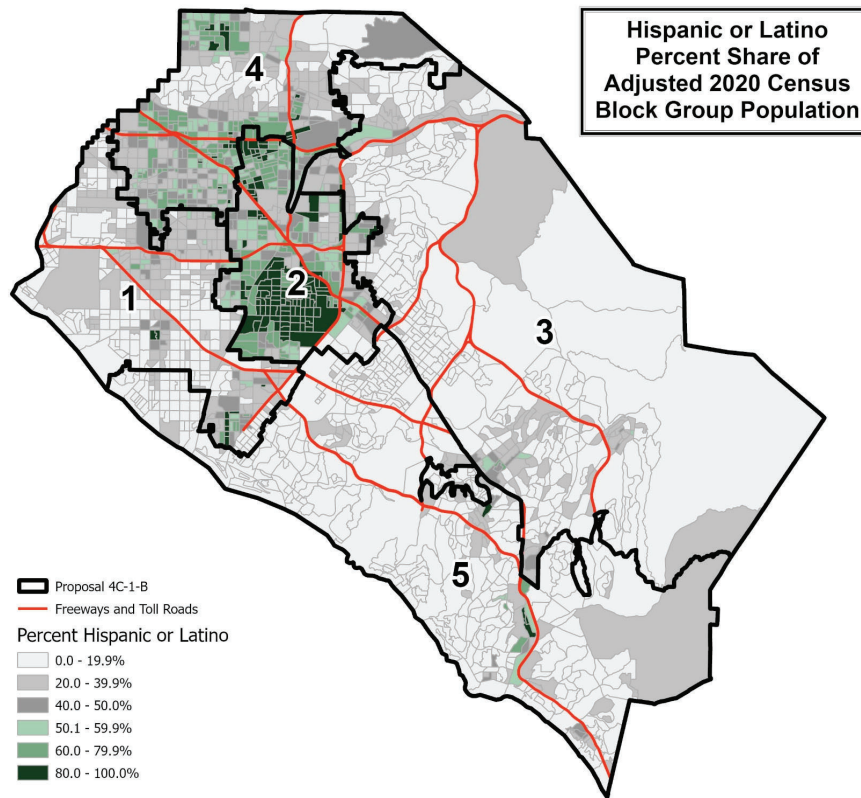
Percent shares calculated using unrounded numbers, but table displays only to tenths; therefore, percents displayed may not sum to 100%.

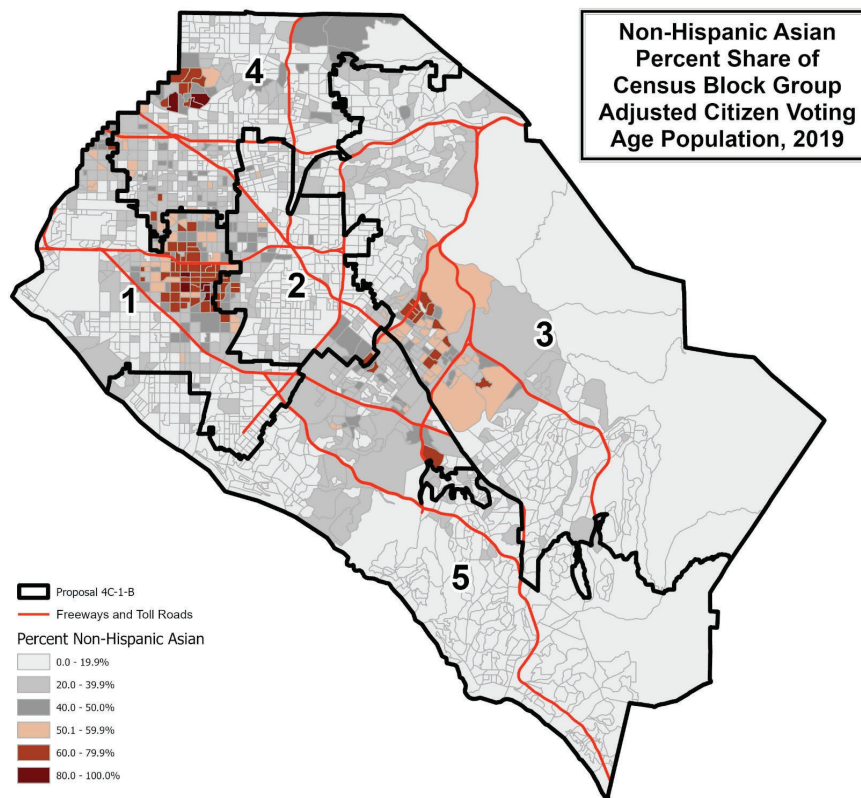
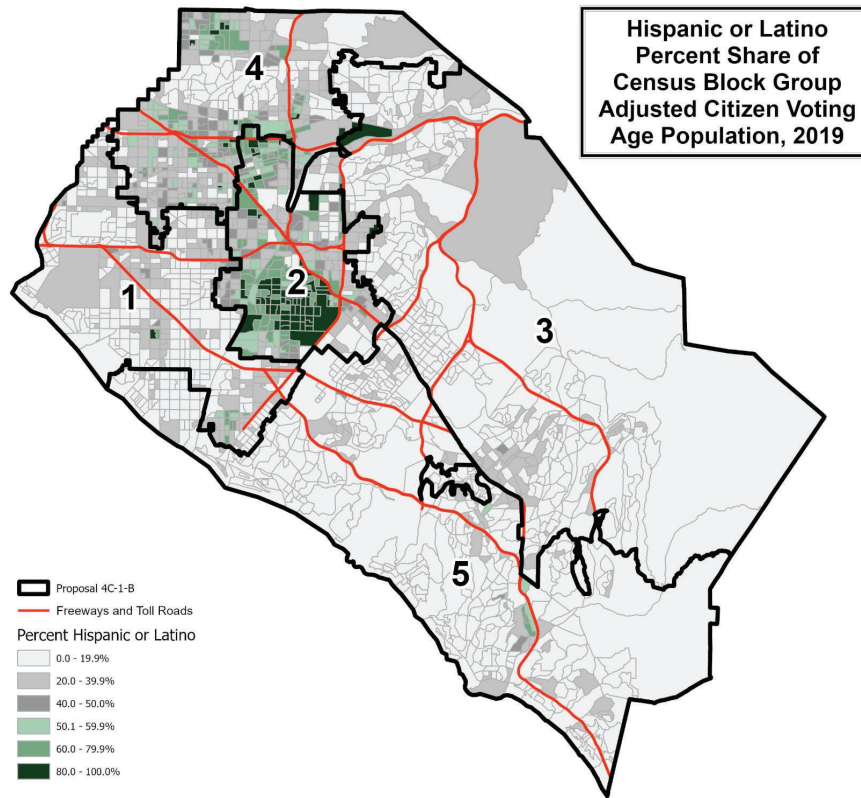
Source: Statewide Database; Adjusted, incarcerated persons reallocated P.L. 94-171 2020 Redistricting Data, Revised 9/27/2021

**PROPOSAL 4C-Revision 1-B**

Contact Name: Board of Supervisors  
Organization:  
Submitted Description: 4C-Rev. 1-B

Notes: November 16, 2021 Board-authorized/Chairman Do recommended revisions plus Supervisor Bartlett revisions:  
(1) Aliso Viejo from D3 to D5  
(2) Laguna Hills from D3 to D5  
(3) RMV CDP from D3 to D5  
(4) Ladera Ranch CDP from D3 to D5  
(5) Move Irvine North of the 5 from D5 to D3



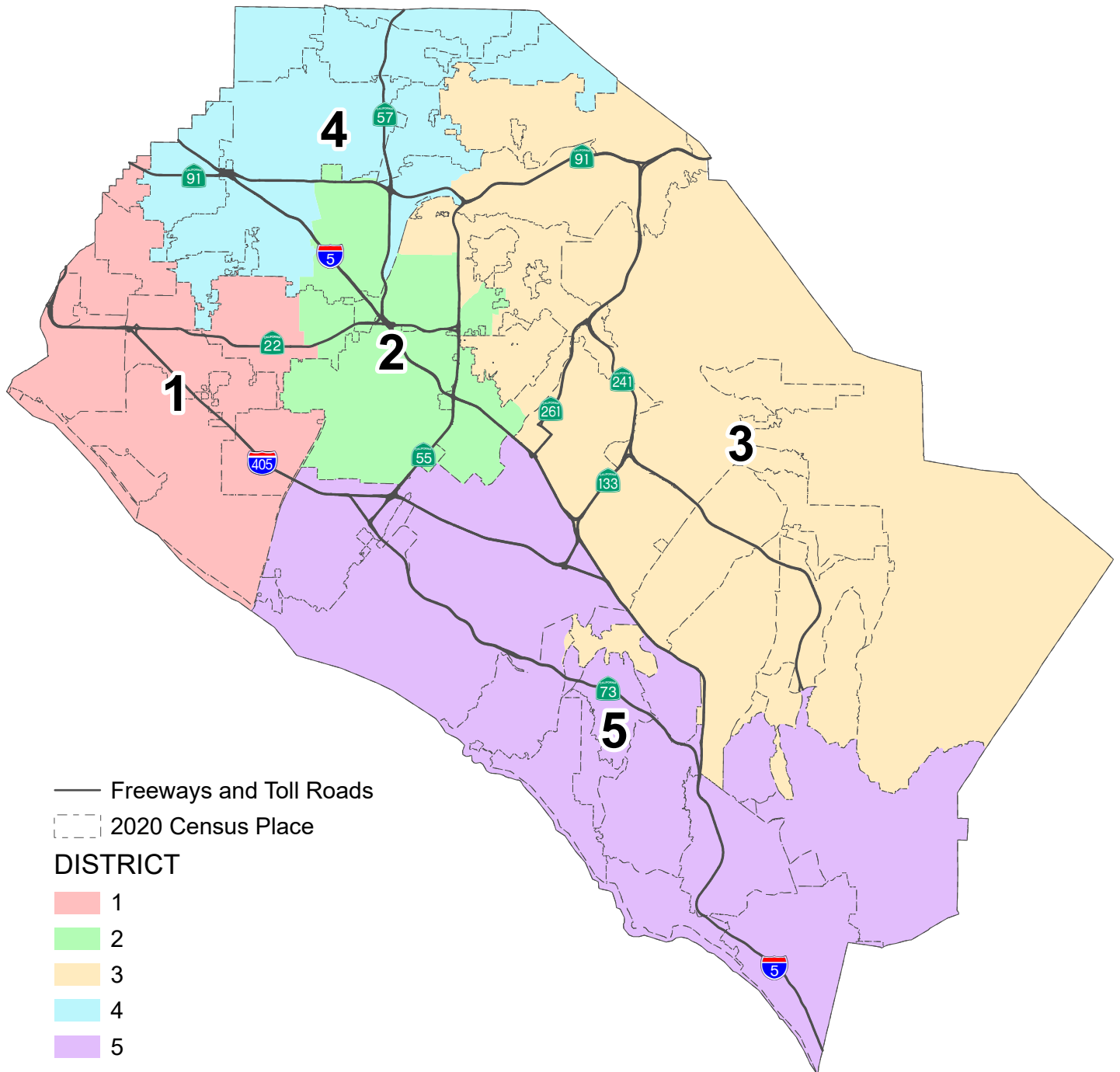


This page is intentionally left blank



# County of Orange 2021 Redistricting

## Proposal 4C-1-C Map



This page is intentionally left blank

**PROPOSAL 4C-Revision 1-C  
County of Orange 2021 Redistricting**

**Table 1. Adjusted 2020 Census Total Population by Race/Ethnicity**

District	Total Population	Hispanic or Latino of any Race	Non-Hispanic White	Non-Hispanic Black or African-American	Non-Hispanic American Indian or Alaska Native	Non-Hispanic Asian	Non-Hispanic Native Hawaiian or Other Pacific Islander	Non-Hispanic Some Other Race	Non-Hispanic Two or More Races
<b>1</b>	595,117	133,689	231,132	7,986	1,045	191,152	2,157	2,778	25,178
	100.0%	22.5%	38.8%	1.3%	0.2%	32.1%	0.4%	0.5%	4.2%
<b>2</b>	625,085	416,497	94,197	8,510	1,019	89,043	1,579	2,314	11,926
	100.0%	66.6%	15.1%	1.4%	0.2%	14.2%	0.3%	0.4%	1.9%
<b>3</b>	630,771	116,097	311,563	8,741	859	157,414	879	3,029	32,189
	100.0%	18.4%	49.4%	1.4%	0.1%	25.0%	0.1%	0.5%	5.1%
<b>4</b>	620,089	282,542	151,876	14,651	1,252	146,809	1,962	2,817	18,180
	100.0%	45.6%	24.5%	2.4%	0.2%	23.7%	0.3%	0.5%	2.9%
<b>5</b>	721,948	141,456	411,360	10,055	1,150	114,849	1,160	4,149	37,769
	100.0%	19.6%	57.0%	1.4%	0.2%	15.9%	0.2%	0.6%	5.2%
<b>COUNTY TOTAL</b>	3,193,010	1,090,281	1,200,128	49,943	5,325	699,267	7,737	15,087	125,242
	100.0%	34.1%	37.6%	1.6%	0.2%	21.9%	0.2%	0.5%	3.9%

**Table 2. Difference from 2021 Target Supervisorial District Population of 638,602**

District	Number	Percent	Percentage Spread (Largest - Smallest)
<b>1</b>	-43,485	-6.81%	19.86%
<b>2</b>	-13,517	-2.12%	
<b>3</b>	-7,831	-1.23%	
<b>4</b>	-18,513	-2.90%	
<b>5</b>	83,346	13.05%	

**Split Cities/Census Designated Places (CDPs) -**

Anaheim (3)

Garden Grove (2)

Irvine (2)

Orange (2)

Tustin (2)

Percent shares calculated using unrounded numbers, but table displays only to tenths; therefore, percents displayed may not sum to 100%.

Number in ( ) indicates number of Supervisorial Districts the city/CDP falls within.

The U.S. Census Bureau misassigned three (3) census blocks to the City of Tustin that are actually in the City of Santa Ana with a total of 260 population. Since the affected area is fully assigned to District 2, no correction is necessary.

Revisions authorized by the Board of Supervisors on November 16, 2021 to move Laguna Hills from District 3 into District 5 created a non-contiguous District 3 with Laguna Woods detached from District 3 by Laguna Hills.

**PROPOSAL 4C-Revision 1-C**  
**County of Orange 2021 Redistricting**

**Table 3. Adjusted Citizen Voting Age Population (CVAP) by Race/Ethnicity, 2015-2019 5-Year Estimates**

District	Total Estimated CVAP	Hispanic or Latino of any Race	Non- Hispanic White	Non-Hispanic Black or African- American	Non-Hispanic American Indian or Alaska Native	Non-Hispanic Hispanic Asian	Non-Hispanic Native Hawaiian or Other Pacific Islander	Non- Hispanic Two or More Races
<b>1</b>	424,266	70,867	208,785	6,992	1,151	123,859	1,284	10,156
	100.0%	16.7%	49.3%	1.7%	0.3%	29.3%	0.3%	2.4%
<b>2</b>	342,733	179,484	91,464	6,004	553	59,128	913	4,062
	100.0%	52.5%	26.8%	1.8%	0.2%	17.3%	0.3%	1.2%
<b>3</b>	420,583	60,035	264,309	6,465	590	78,769	416	9,203
	100.0%	14.3%	63.0%	1.5%	0.1%	18.8%	0.1%	2.2%
<b>4</b>	380,535	130,152	141,349	11,977	789	86,734	1,845	6,863
	100.0%	34.3%	37.2%	3.2%	0.2%	22.8%	0.5%	1.8%
<b>5</b>	497,559	70,377	340,654	8,117	850	62,902	1,109	12,769
	100.0%	14.2%	68.6%	1.6%	0.2%	12.7%	0.2%	2.6%
<b>COUNTY TOTAL</b>	2,065,676	510,915	1,046,561	39,555	3,933	411,392	5,567	43,053
	100.0%	24.8%	50.8%	1.9%	0.2%	20.0%	0.3%	2.1%

Source: Statewide Database 2015-2019 Citizen Voting Age Population, adjusted to reflect reallocated incarcerated persons, on 2020 Census Blocks, Revised 9/27/2021 <https://statewidedatabase.org/redistricting2021/counties.html>

Notes: Percentages are calculated from sum of individual categories, not Total Estimated CVAP.

Because this is a special tabulation of data and not part of the standard data products shown on the Census Bureau's data.census.gov website, these estimates are rounded. Therefore, individual categories may not exactly add to the total.

For example, the sum of each of the race groups for non-Hispanics may not be the same as the estimate given for non-Hispanics. These estimates will not match counts from the 2020 Census.

The original data source for the Citizen Voting Age Population (CVAP) is the American Community Survey (ACS). The ACS is an ongoing survey by the U.S. Census Bureau sent to approximately 250,000 households each month.

The ACS estimates used to develop these data were collected from January 1, 2015 to December 31, 2019 utilizing the 2010 Census block groups, which were disaggregated to the 2020 Census blocks by the Statewide Database.

For more information about the CVAP products, visit <https://www.census.gov/programs-surveys/decennial-census/about/voting-rights/cvap.html> and

[https://www2.census.gov/programs-surveys/decennial/rdo/technical-documentation/special-tabulation/CVAP\\_2015-2019\\_ACS\\_documentation.pdf](https://www2.census.gov/programs-surveys/decennial/rdo/technical-documentation/special-tabulation/CVAP_2015-2019_ACS_documentation.pdf)

**PROPOSAL 4C-Revision 1-C**  
**County of Orange 2021 Redistricting**

**Table 4. Adjusted 2020 Census Population by District and 2020 Census Place****DISTRICT 1**

Place	Total Population	Percent of District
Cypress	50,235	8.4%
Fountain Valley	57,120	9.6%
Garden Grove*	124,106	20.9%
Huntington Beach	199,033	33.4%
La Palma	15,597	2.6%
Los Alamitos	11,795	2.0%
Midway City CDP	8,845	1.5%
Rossmoor CDP	10,634	1.8%
Seal Beach	25,283	4.2%
Unincorporated	1,386	0.2%
Westminster	91,083	15.3%
<b>District 1 Total</b>	<b>595,117</b>	<b>100.0%</b>

**DISTRICT 2**

Place	Total Population	Percent of District
Anaheim*	113,792	18.2%
Garden Grove*	48,240	7.7%
Orange*	79,088	12.7%
Santa Ana	311,393	49.8%
Tustin*	68,280	10.9%
Unincorporated	4,292	0.7%
<b>District 2 Total</b>	<b>625,085</b>	<b>100.0%</b>

**DISTRICT 3**

Place	Total Population	Percent of District
Anaheim*	56,099	8.9%
Coto de Caza CDP	14,723	2.3%
Irvine*	126,081	20.0%
Laguna Woods	17,658	2.8%
Lake Forest	85,965	13.6%
Las Flores CDP	6,004	1.0%
Mission Viejo	93,760	14.9%
Modjeska CDP	632	0.1%
North Tustin CDP	25,749	4.1%
Orange*	61,103	9.7%
Rancho Santa Margarita	48,000	7.6%
Silverado CDP	932	0.1%
Trabuco Canyon CDP	1,020	0.2%
Tustin*	12,132	1.9%
Unincorporated	6,555	1.0%
Villa Park	5,850	0.9%
Williams Canyon CDP	93	0.0%
Yorba Linda	68,415	10.8%
<b>District 3 Total</b>	<b>630,771</b>	<b>100.0%</b>

**DISTRICT 4**

Place	Total Population	Percent of District
Anaheim*	177,862	28.7%
Brea	47,397	7.6%
Buena Park	84,187	13.6%
Fullerton	143,930	23.2%
La Habra	63,234	10.2%
Placentia	51,925	8.4%
Stanton	38,067	6.1%
Unincorporated	13,487	2.2%
<b>District 4 Total</b>	<b>620,089</b>	<b>100.0%</b>

**DISTRICT 5**

Place	Total Population	Percent of District
Aliso Viejo	52,222	7.2%
Costa Mesa	112,139	15.5%
Dana Point	33,144	4.6%
Irvine*	181,877	25.2%
Ladera Ranch CDP	26,188	3.6%
Laguna Beach	23,061	3.2%
Laguna Hills	31,399	4.3%
Laguna Niguel	64,417	8.9%
Newport Beach	85,338	11.8%
Rancho Mission Viejo CDP	10,385	1.4%
San Clemente	64,384	8.9%
San Juan Capistrano	35,271	4.9%
Unincorporated	2,123	0.3%
<b>District 5 Total</b>	<b>721,948</b>	<b>100.0%</b>

\*City split by proposed district.

Percent shares calculated using unrounded numbers, but table displays only to tenths; therefore, percents displayed may not sum to 100%.

**PROPOSAL 4C-Revision 1-C**  
**County of Orange 2021 Redistricting**

**Table 5. Adjusted 2020 Census Population 18 Years and Over by Race/Ethnicity**

District	Total Population 18 and Over	Hispanic or Latino of any Race	Non- Hispanic White	Non- Hispanic Black or African- American	Non-Hispanic American Indian or Alaska Native	Non- Hispanic Asian	Non-Hispanic Native Hawaiian or Other Pacific Islander	Non- Hispanic Some Other Race	Non- Hispanic Two or More Races
<b>1</b>	482,087	97,185	199,892	6,565	915	157,057	1,753	2,180	16,540
	100.0%	20.2%	41.5%	1.4%	0.2%	32.6%	0.4%	0.5%	3.4%
<b>2</b>	478,351	299,801	83,851	7,221	862	75,295	1,260	1,598	8,463
	100.0%	62.7%	17.5%	1.5%	0.2%	15.7%	0.3%	0.3%	1.8%
<b>3</b>	496,181	83,198	261,231	7,125	682	121,766	706	2,186	19,287
	100.0%	16.8%	52.6%	1.4%	0.1%	24.5%	0.1%	0.4%	3.9%
<b>4</b>	484,521	202,596	132,490	11,938	1,054	120,674	1,570	2,040	12,159
	100.0%	41.8%	27.3%	2.5%	0.2%	24.9%	0.3%	0.4%	2.5%
<b>5</b>	584,539	104,737	345,939	8,618	989	95,071	915	3,126	25,144
	100.0%	17.9%	59.2%	1.5%	0.2%	16.3%	0.2%	0.5%	4.3%
<b>COUNTY TOTAL</b>	2,525,679	787,517	1,023,403	41,467	4,502	569,863	6,204	11,130	81,593
	100.0%	31.2%	40.5%	1.6%	0.2%	22.6%	0.2%	0.4%	3.2%

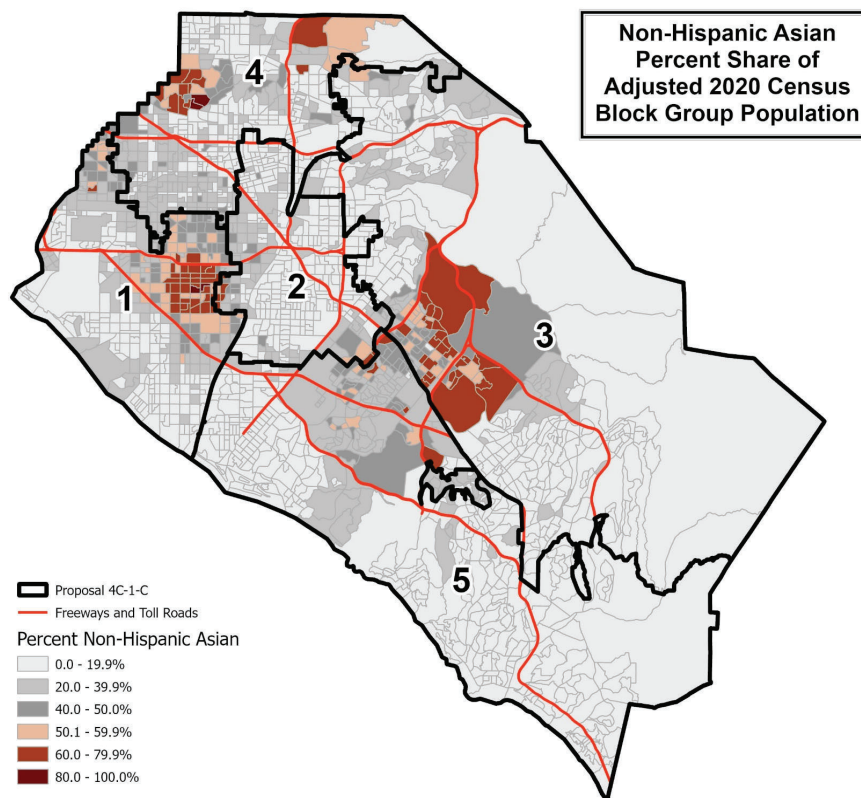
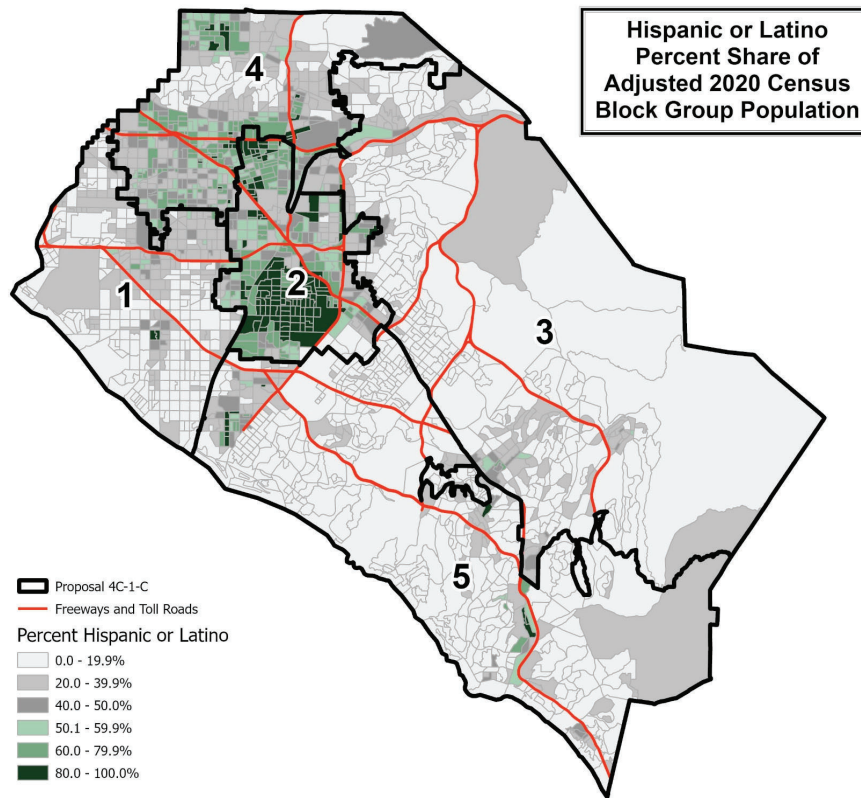
Percent shares calculated using unrounded numbers, but table displays only to tenths; therefore, percents displayed may not sum to 100%.

Source: Statewide Database; Adjusted, incarcerated persons reallocated P.L. 94-171 2020 Redistricting Data, Revised 9/27/2021

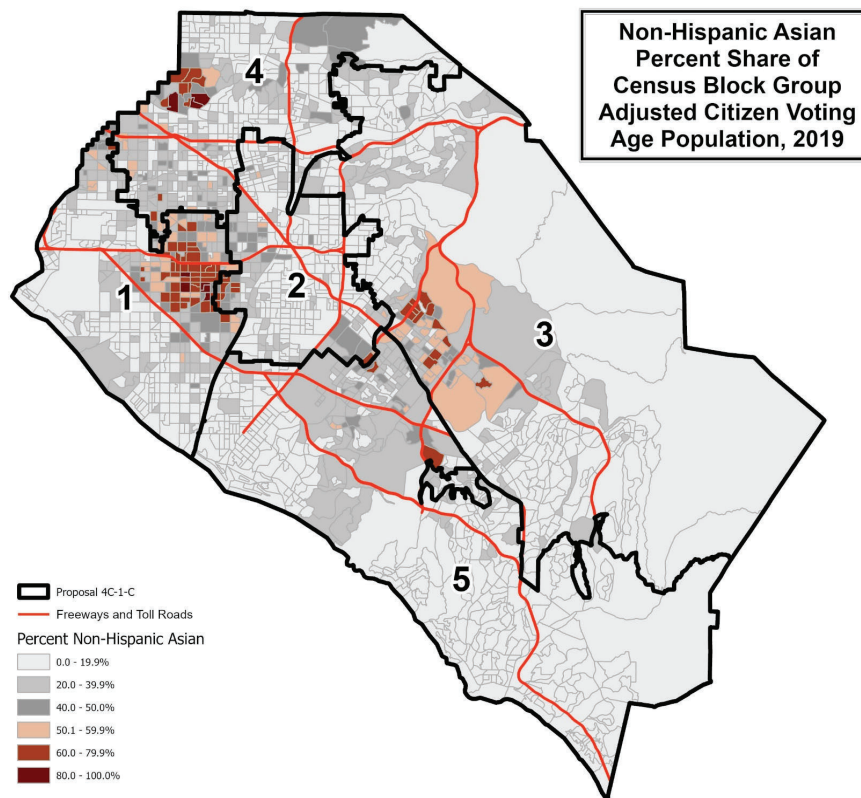
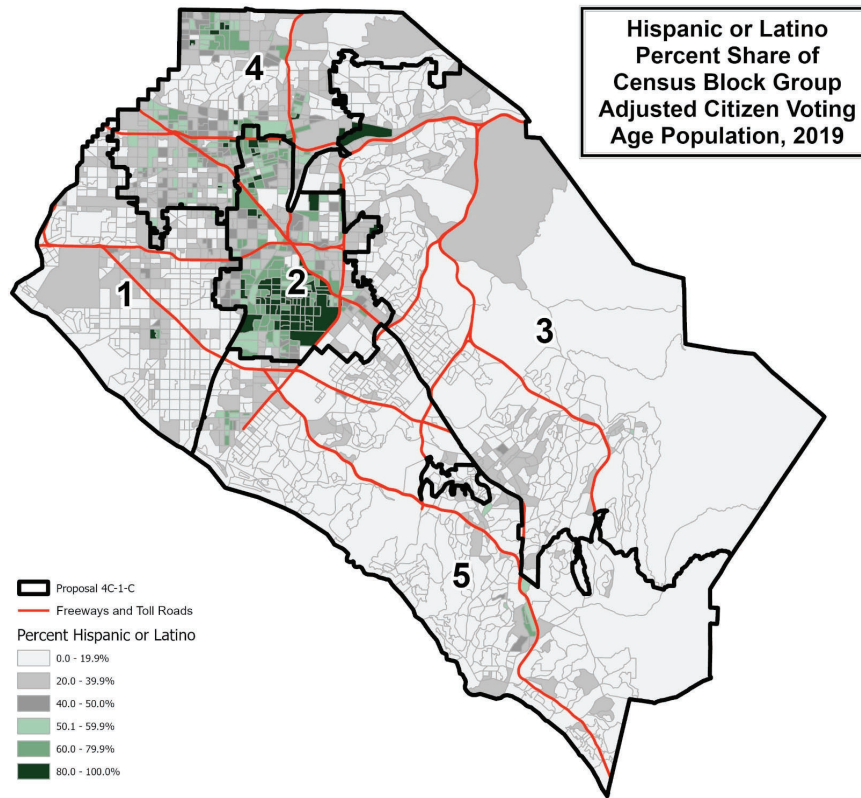
**PROPOSAL 4C-Revision 1-C**

Contact Name: Board of Supervisors  
Organization:  
Submitted Description: 4C-Rev. 1-C

Notes: November 16, 2021 Board-authorized/Chairman Do recommended revisions plus Supervisor Bartlett (Plan 4C-Revision 1-B) and Supervisor Foley revisions:  
(1) Swap HB from D5 to D1 and Costa Mesa from D1 to D5  
(2) Move Irvine North of the 5 from D5 to D3 to accommodate and balance of swap of HB from D5 to D1 and Costa Mesa from D1 to D5



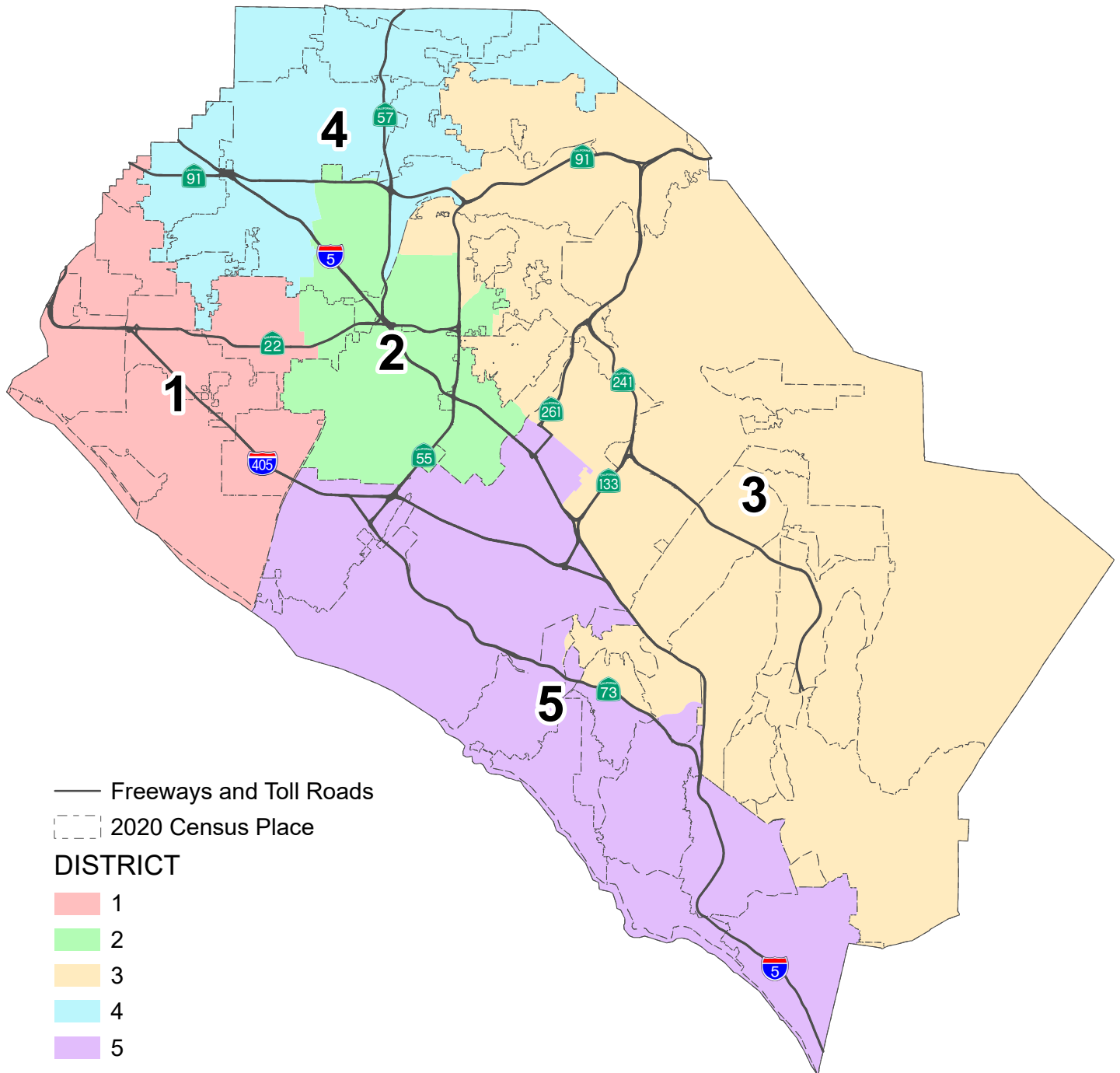




This page is intentionally left blank

# County of Orange 2021 Redistricting

## Proposal 4C-1-D Map



This page is intentionally left blank

**PROPOSAL 4C-Revision 1-D**  
**County of Orange 2021 Redistricting**

**Table 1. Adjusted 2020 Census Total Population by Race/Ethnicity**

District	Total Population	Hispanic or Latino of any Race	Non-Hispanic White	Non-Hispanic Black or African-American	Non-Hispanic American Indian or Alaska Native	Non-Hispanic Asian	Non-Hispanic Native Hawaiian or Other Pacific Islander	Non-Hispanic Some Other Race	Non-Hispanic Two or More Races
<b>1</b>	595,117	133,689	231,132	7,986	1,045	191,152	2,157	2,778	25,178
	100.0%	22.5%	38.8%	1.3%	0.2%	32.1%	0.4%	0.5%	4.2%
<b>2</b>	625,085	416,497	94,197	8,510	1,019	89,043	1,579	2,314	11,926
	100.0%	66.6%	15.1%	1.4%	0.2%	14.2%	0.3%	0.4%	1.9%
<b>3</b>	676,350	127,640	347,004	8,962	923	152,554	950	3,283	35,034
	100.0%	18.9%	51.3%	1.3%	0.1%	22.6%	0.1%	0.5%	5.2%
<b>4</b>	620,089	282,542	151,876	14,651	1,252	146,809	1,962	2,817	18,180
	100.0%	45.6%	24.5%	2.4%	0.2%	23.7%	0.3%	0.5%	2.9%
<b>5</b>	676,369	129,913	375,919	9,834	1,086	119,709	1,089	3,895	34,924
	100.0%	19.2%	55.6%	1.5%	0.2%	17.7%	0.2%	0.6%	5.2%
<b>COUNTY TOTAL</b>	3,193,010	1,090,281	1,200,128	49,943	5,325	699,267	7,737	15,087	125,242
	100.0%	34.1%	37.6%	1.6%	0.2%	21.9%	0.2%	0.5%	3.9%

**Table 2. Difference from 2021 Target Supervisorial District Population of 638,602**

District	Number	Percent	Percentage Spread (Largest - Smallest)
<b>1</b>	-43,485	-6.81%	12.72%
<b>2</b>	-13,517	-2.12%	
<b>3</b>	37,748	5.91%	
<b>4</b>	-18,513	-2.90%	
<b>5</b>	37,767	5.91%	

**Split Cities/Census Designated Places (CDPs) -**

Aliso Viejo (2)  
Anaheim (3)  
Garden Grove (2)  
Irvine (2)  
Laguna Hills (2)  
Orange (2)  
Tustin (2)

Percent shares calculated using unrounded numbers, but table displays only to tenths; therefore, percents displayed may not sum to 100%.

Number in ( ) indicates number of Supervisorial Districts the city/CDP falls within.

The U.S. Census Bureau misassigned three (3) census blocks to the City of Tustin that are actually in the City of Santa Ana with a total of 260 population. Since the affected area is fully assigned to District 2, no correction is necessary.

**PROPOSAL 4C-Revision 1-D**  
**County of Orange 2021 Redistricting**

**Table 3. Adjusted Citizen Voting Age Population (CVAP) by Race/Ethnicity, 2015-2019 5-Year Estimates**

District	Total Estimated CVAP	Hispanic or Latino of any Race	Non- Hispanic White	Non-Hispanic Black or African- American	Non-Hispanic American Indian or Alaska Native	Non- Hispanic Asian	Non-Hispanic Native Hawaiian or Other Pacific Islander	Non- Hispanic Two or More Races
<b>1</b>	424,266	70,867	208,785	6,992	1,151	123,859	1,284	10,156
	100.0%	16.7%	49.3%	1.7%	0.3%	29.3%	0.3%	2.4%
<b>2</b>	342,733	179,484	91,464	6,004	553	59,128	913	4,062
	100.0%	52.5%	26.8%	1.8%	0.2%	17.3%	0.3%	1.2%
<b>3</b>	448,861	65,688	287,308	6,925	765	76,869	491	9,975
	100.0%	14.7%	64.1%	1.5%	0.2%	17.2%	0.1%	2.2%
<b>4</b>	380,535	130,152	141,349	11,977	789	86,734	1,845	6,863
	100.0%	34.3%	37.2%	3.2%	0.2%	22.8%	0.5%	1.8%
<b>5</b>	469,281	64,724	317,655	7,657	675	64,802	1,034	11,997
	100.0%	13.8%	67.8%	1.6%	0.1%	13.8%	0.2%	2.6%
<b>COUNTY TOTAL</b>	2,065,676	510,915	1,046,561	39,555	3,933	411,392	5,567	43,053
	100.0%	24.8%	50.8%	1.9%	0.2%	20.0%	0.3%	2.1%

Source: Statewide Database 2015-2019 Citizen Voting Age Population, adjusted to reflect reallocated incarcerated persons, on 2020 Census Blocks, Revised 9/27/2021 <https://statewidedatabase.org/redistricting2021/counties.html>

Notes: Percentages are calculated from sum of individual categories, not Total Estimated CVAP.

Because this is a special tabulation of data and not part of the standard data products shown on the Census Bureau's data.census.gov website, these estimates are rounded. Therefore, individual categories may not exactly add to the total.

For example, the sum of each of the race groups for non-Hispanics may not be the same as the estimate given for non-Hispanics. These estimates will not match counts from the 2020 Census.

The original data source for the Citizen Voting Age Population (CVAP) is the American Community Survey (ACS). The ACS is an ongoing survey by the U.S. Census Bureau sent to approximately 250,000 households each month.

The ACS estimates used to develop these data were collected from January 1, 2015 to December 31, 2019 utilizing the 2010 Census block groups, which were disaggregated to the 2020 Census blocks by the Statewide Database.

For more information about the CVAP products, visit <https://www.census.gov/programs-surveys/decennial-census/about/voting-rights/cvap.html> and

[https://www2.census.gov/programs-surveys/decennial/rdo/technical-documentation/special-tabulation/CVAP\\_2015-2019\\_ACS\\_documentation.pdf](https://www2.census.gov/programs-surveys/decennial/rdo/technical-documentation/special-tabulation/CVAP_2015-2019_ACS_documentation.pdf)

**PROPOSAL 4C-Revision 1-D**  
**County of Orange 2021 Redistricting**

**Table 4. Adjusted 2020 Census Population by District and 2020 Census Place****DISTRICT 1**

<b>Place</b>	<b>Total Population</b>	<b>Percent of District</b>
Cypress	50,235	8.4%
Fountain Valley	57,120	9.6%
Garden Grove*	124,106	20.9%
Huntington Beach	199,033	33.4%
La Palma	15,597	2.6%
Los Alamitos	11,795	2.0%
Midway City CDP	8,845	1.5%
Rossmoor CDP	10,634	1.8%
Seal Beach	25,283	4.2%
Unincorporated	1,386	0.2%
Westminster	91,083	15.3%
<b>District 1 Total</b>	<b>595,117</b>	<b>100.0%</b>

**DISTRICT 2**

<b>Place</b>	<b>Total Population</b>	<b>Percent of District</b>
Anaheim*	113,792	18.2%
Garden Grove*	48,240	7.7%
Orange*	79,088	12.7%
Santa Ana	311,393	49.8%
Tustin*	68,280	10.9%
Unincorporated	4,292	0.7%
<b>District 2 Total</b>	<b>625,085</b>	<b>100.0%</b>

**DISTRICT 3**

<b>Place</b>	<b>Total Population</b>	<b>Percent of District</b>
Aliso Viejo*	19,822	2.9%
Anaheim*	56,099	8.3%
Coto de Caza CDP	14,723	2.2%
Irvine*	92,824	13.7%
Ladera Ranch CDP	26,188	3.9%
Laguna Hills*	22,343	3.3%
Laguna Woods	17,658	2.6%
Lake Forest	85,965	12.7%
Las Flores CDP	6,004	0.9%
Mission Viejo	93,760	13.9%
Modjeska CDP	632	0.1%
North Tustin CDP	25,749	3.8%
Orange*	61,103	9.0%
Rancho Mission Viejo CDP	10,385	1.5%
Rancho Santa Margarita	48,000	7.1%
Silverado CDP	932	0.1%
Trabuco Canyon CDP	1,020	0.2%
Tustin*	12,132	1.8%
Unincorporated	6,653	1.0%
Villa Park	5,850	0.9%
Williams Canyon CDP	93	0.0%
Yorba Linda	68,415	10.1%
<b>District 3 Total</b>	<b>676,350</b>	<b>100.0%</b>

**DISTRICT 4**

<b>Place</b>	<b>Total Population</b>	<b>Percent of District</b>
Anaheim*	177,862	28.7%
Brea	47,397	7.6%
Buena Park	84,187	13.6%
Fullerton	143,930	23.2%
La Habra	63,234	10.2%
Placentia	51,925	8.4%
Stanton	38,067	6.1%
Unincorporated	13,487	2.2%
<b>District 4 Total</b>	<b>620,089</b>	<b>100.0%</b>

**DISTRICT 5**

<b>Place</b>	<b>Total Population</b>	<b>Percent of District</b>
Aliso Viejo*	32,400	4.8%
Costa Mesa	112,139	16.6%
Dana Point	33,144	4.9%
Irvine*	215,134	31.8%
Laguna Beach	23,061	3.4%
Laguna Hills*	9,056	1.3%
Laguna Niguel	64,417	9.5%
Newport Beach	85,338	12.6%
San Clemente	64,384	9.5%
San Juan Capistrano	35,271	5.2%
Unincorporated	2,025	0.3%
<b>District 5 Total</b>	<b>676,369</b>	<b>100.0%</b>

\*City split by proposed district.

Percent shares calculated using unrounded numbers, but table displays only to tenths; therefore, percents displayed may not sum to 100%.

Source: Statewide Database; Adjusted, incarcerated persons reallocated P.L. 94-171 2020 Redistricting Data, Revised 9/27/2021

**PROPOSAL 4C-Revision 1-D**  
**County of Orange 2021 Redistricting**

**Table 5. Adjusted 2020 Census Population 18 Years and Over by Race/Ethnicity**

District	Total Population 18 and Over	Hispanic or Latino of any Race	Non- Hispanic White	Non- Hispanic Black or African- American	Non-Hispanic American Indian or Alaska Native	Non- Hispanic Asian	Non-Hispanic Native Hawaiian or Other Pacific Islander	Non- Hispanic Some Other Race	Non- Hispanic Two or More Races
<b>1</b>	482,087	97,185	199,892	6,565	915	157,057	1,753	2,180	16,540
	100.0%	20.2%	41.5%	1.4%	0.2%	32.6%	0.4%	0.5%	3.4%
<b>2</b>	478,351	299,801	83,851	7,221	862	75,295	1,260	1,598	8,463
	100.0%	62.7%	17.5%	1.5%	0.2%	15.7%	0.3%	0.3%	1.8%
<b>3</b>	528,697	90,834	287,488	7,394	752	118,247	760	2,349	20,873
	100.0%	17.2%	54.4%	1.4%	0.1%	22.4%	0.1%	0.4%	3.9%
<b>4</b>	484,521	202,596	132,490	11,938	1,054	120,674	1,570	2,040	12,159
	100.0%	41.8%	27.3%	2.5%	0.2%	24.9%	0.3%	0.4%	2.5%
<b>5</b>	552,023	97,101	319,682	8,349	919	98,590	861	2,963	23,558
	100.0%	17.6%	57.9%	1.5%	0.2%	17.9%	0.2%	0.5%	4.3%
<b>COUNTY TOTAL</b>	2,525,679	787,517	1,023,403	41,467	4,502	569,863	6,204	11,130	81,593
	100.0%	31.2%	40.5%	1.6%	0.2%	22.6%	0.2%	0.4%	3.2%

Percent shares calculated using unrounded numbers, but table displays only to tenths; therefore, percents displayed may not sum to 100%.

Source: Statewide Database; Adjusted, incarcerated persons reallocated P.L. 94-171 2020 Redistricting Data, Revised 9/27/2021



**PROPOSAL 4C-Revision 1-D**

Contact Name: Board of Supervisors  
Organization:  
Submitted Description: 4C-Rev. 1-D

Notes: November 16, 2021 Board-authorized/Chairman Do recommended revisions plus Supervisor Foley revisions:  
(1) Swap HB from D5 to D1 and Costa Mesa from D1 to D5  
(2) Move Irvine North of the 5 from D5 to D3 to accommodate and balance of swap of HB from D5 to D1 and Costa Mesa from D1 to D5

