

Attachment B: Redistricting Map Proposal Public Comment

Received October 15, 2021 – November 1, 2021 Noon

For a complete list of all public comments received please visit –
www.ocgov.com/redistricting

Osborn, Rachael

From: Katheryn McLaughlin <katheryn.mclaughlin@gmail.com>
Sent: Saturday, October 30, 2021 3:19 AM
To: 2021 Orange County Redistricting
Subject: Support for the OC People's Redistricting Alliance Supervisorial Map

Follow Up Flag: Follow up
Flag Status: Completed

Attention: This email originated from outside the County of Orange. Use caution when opening attachments or links.

Dear Orange County Supervisors,

My name is Katheryn McLaughlin and I am a resident of Orange County's 5th District, represented by Supervisor Lisa Bartlett. I write to submit a comment voicing my ongoing support for the OC People's Redistricting Alliance Supervisorial map. This map prioritizes communities that have been historically marginalized, corrects the problems with the current configuration, and complies with the legal requirements of the Voting Rights Act and Fair Maps Act. The current map configuration has disenfranchised communities of color by prioritizing the interests of one political party.

Orange County is a diverse region with many thriving and populous immigrant communities. Yet this has not always been reflected by the county's governance and concentrations of power. As a second-generation child of a Korean immigrant family, I've witnessed the ways that local resources are distributed and local housing and legal systems are rendered inaccessible and confusing to OC communities. There are many great things about the opportunities and quality of life available to residents of OC, but these beautiful points are further and further out of step with its outdated local governmental structure--a system that prioritizes partisan power and protection of the assets of the few over accessible and responsive governance to the needs of the many.

Communities of interest deserve local representation that advocates for their needs and values and promotes opportunities for them. I hope the immigrant communities of Orange County can look forward to a local government that serves and represents them far better than the OC of the past.

The OC PRA map has made communities of interest its top priority when drawing lines, considering the important testimonies of residents from communities that have been harmed by the current configuration.

The board needs to correct the significant legal problems with the current map configuration. I urge you to adopt the OC People's Redistricting Alliance map.

Sincerely,
Katheryn McLaughlin

Osborn, Rachael

From: KAITLYN GILLASPY <ladyekait@verizon.net>
Sent: Sunday, October 31, 2021 6:24 PM
To: 2021 Orange County Redistricting
Subject: I Support the OC PRA Map

Follow Up Flag: Follow up
Flag Status: Completed

Attention: This email originated from outside the County of Orange. Use caution when opening attachments or links.

My name is Kaitlyn Gillaspy and I am a resident of La Habra. I'm writing to support the OC People's Redistricting Alliance map. As the current map configuration stands, communities of color are disenfranchised because of the prioritization of the interests of one political party. Whereas the OC PRA map prioritizes communities that have been historically marginalized, corrects the problems with the current map configuration, and complies with the legal requirements of the Voting Rights Act and Fair Maps Act. The OC PRA map has made communities of interest its top priority when drawing lines. Including consideration of the important testimonies of residents from communities that have been harmed by the current map. The Board needs to correct the significant legal problems with the current map configuration, so I urge you to adopt the OC People's Redistricting Alliance map.

Thank you.

Sent from my iPhone

Osborn, Rachael

From: Cathy Threadgill <cathythreadgill@outlook.com>
Sent: Sunday, October 31, 2021 2:07 PM
To: 2021 Orange County Redistricting
Subject: Redistricting Comment
Attachments: OC Redistricting Comment 10-31-21.pdf

Follow Up Flag: Follow up
Flag Status: Completed

Attention: This email originated from outside the County of Orange. Use caution when opening attachments or links.

Hi,

Attached please find my comments regarding the redistricting that is impacting Tustin and North Tustin.

Thank you,
Cathy

Attachment B

**County of Orange 2021 Redistricting
Supervisory District Idea and Comment Form**

Name: (required) Cathy Threadgill

Optional Information¹

City/County: Tustin, Orange County

Phone Number: 714-746-9749

Email: cathythreadgill@outlook.com

Organization (if any): Just a VERY concerned citizen

Please write any ideas or comments you would like to share with the County of Orange on redistricting. If you are sharing ideas about proposed district boundaries or communities of interest (including, but not limited to information on boundaries of your community whether defined by city, school area or other criteria, and what bonds your community, please include descriptive information about the area in mind, such as streets or landmarks. The comments you provide will be posted online as part of the public comment and public input process.

A "community of interest" is a population that shares common social or economic interests that should be included within a single supervisory district for purposes of its effective and fair representation. Communities of interest do not include relationships with political parties, incumbents, or political candidates.

Please use additional pages if you require more room to write.

My ideas/comments are as follows:

I live in the City of Tustin. I DO NOT support the draft maps/visualization for our district. This map splits up the northern part of Tustin and North Tustin from the rest of the City, and places us in a district with Walnut (I had to look up Walnut as I never heard of it...it is in LA County!), Diamond Bar, Rowland Heights and Chino Hills. Tustin and North Tustin form a Community of interest with the City of Irvine. People from Tustin (including North Tustin) and people from Irvine regularly connect and interact. Our school districts overlap. Our major shopping center is The Marketplace, which is split down the middle on Jamboree Blvd.

Putting a slice of Tustin and North Tustin into a district with Walnut and Diamond Bar makes no sense. We do not interact with Walnut and Diamond Bar. And I have never been to Rowland Heights or Chino Hills.

The Commission recognized our community of interest with Irvine in forming the Congressional and State Senate maps. I ask the Commission to change these maps to include all of Tustin and North Tustin in the VAP_IRV_1027 Assembly District. Our Assembly District should pair Irvine and Tustin/North Tustin with like cities more like the Congressional maps.

¹ If this information is provided, the County may use it to contact you with questions. The information may be subject to disclosure under the Public Records Act

Please continue on additional pages if you need more space.

Submit to:

- Email: redistricting@ocgov.com OR
- Mail paper copy to:
Attn: 2021 Redistricting Team
333 West Santa Ana Blvd., 3rd Floor
Santa Ana, CA 92701

Comments may also be submitted via the online web form at <https://www.ocgov.com/redistricting/feedback>

Osborn, Rachael

From: Michael Dessen <mdessen@gmail.com>
Sent: Saturday, October 30, 2021 10:22 PM
To: 2021 Orange County Redistricting
Subject: Redistricting

Follow Up Flag: Follow up
Flag Status: Completed

Attention: This email originated from outside the County of Orange. Use caution when opening attachments or links.

My name is Michael Dessen and I am a resident of Irvine. I support the OC People's Redistricting Alliance Supervisorial map. This map prioritizes communities that have been historically marginalized, corrects the problems with the current configuration, and complies with the legal requirements of the Voting Rights Act and Fair Maps Act. The current map configuration has disenfranchised communities of color by prioritizing the interests of one political party.

The OC PRA map has made communities of interest its top priority when drawing lines, considering the important testimonies of residents from communities that have been harmed by the current configuration.

The board needs to correct the significant legal problems with the current map configuration. I urge you to adopt the OC People's Redistricting Alliance map.

Michael Dessen
47 Mistral Ln, Irvine, CA 92617

Osborn, Rachael

From: Mariangeles Soto-Diaz <msotodiaz@alum.calarts.edu>
Sent: Saturday, October 30, 2021 8:13 PM
To: 2021 Orange County Redistricting
Subject: I Support the OC PRA Map

Follow Up Flag: Follow up
Flag Status: Completed

Attention: This email originated from outside the County of Orange. Use caution when opening attachments or links.

Hello,

My name is Mariangeles Soto and I am a resident of Orange County's 45th Congressional District. I'm writing to support the OC People's Redistricting Alliance map. As the current map configuration stands, communities of color are disenfranchised because of the prioritization of the interests of one political party. Whereas the OC PRA map prioritizes communities that have been historically marginalized, corrects the problems with the current map configuration, and complies with the legal requirements of the Voting Rights Act and Fair Maps Act. The OC PRA map has made communities of interest its top priority when drawing lines. Including consideration of the important testimonies of residents from communities that have been harmed by the current map. The Board needs to correct the significant legal problems with the current map configuration, so I urge you to adopt the OC People's Redistricting Alliance map.

Thanks,
MSD

**MEMORANDUM**

To: Robin Stieler, Clerk of the Board
From: Vice Chair Doug Chaffee, Fourth District
Date: October 29, 2021

Doug Chaffee

RECEIVED
2021 OCT 29 PM 12:3
CLERK OF THE BOARD
ORANGE COUNTY
BOARD OF SUPERVISORS

RE: November 2, 2021 Board of Supervisor-Item 23 Proposed 2021 Redistricting maps

With respect to Agenda Item no. 23, following the public hearing, I respectfully request that the Board, in my absence, direct staff to make the following modifications to Map # 4 and Map # 5. These modifications are requested to (1) minimize the division of cities and census designated places; (2) respect existing communities of interest; and (3) make District boundaries easily identifiable and understandable by residents.

As to map #4 (attachment A) the requested modifications include:

- Remove the entire City of Yorba Linda from District 4;
- Remove the eastern portion of Anaheim known as Anaheim Hills, stopping at Lakeview St;
- Add the Cities of Fullerton and Placentia entirety;
- District 4 line from Placentia City limits should extend south to Lakeview St to the Santa Ana River along the 91 Freeway;
- District 4 line should continue along the Santa Ana River towards 57 Freeway South ending at Katella Ave; and
- District 4 line should go West on Katella Ave to State College then North the City to Fullerton City line.

As to map #5 (attachment B) the requested modifications include:

- District 4 line from Placentia City limits should extend south to Lakeview Street to the 91 Freeway;
- District 4 line should extend east from 91 Freeway to 57 Freeway South ending at Katella Avenue;
- District 4 line should encompass the Eastside of the 57 Freeway.

Recommended Action: Provide direction to staff to prepare revised maps in accordance with the specifications set forth herein.

Enclosed:

Attachment A (Proposal Map #4 with modifications)

Attachment B (Proposal Map #5 with modifications)

Osborn, Rachael

From: chapman.carl@ca.rr.com
Sent: Friday, October 29, 2021 6:31 PM
To: 2021 Orange County Redistricting
Subject: I Support the OC PRA Map

Follow Up Flag: Follow up
Flag Status: Completed

Attention: This email originated from outside the County of Orange. Use caution when opening attachments or links.

My name is Carl Chapman and I am a resident of Costa Mesa, California. I'm writing to support the OC People's Redistricting Alliance map. As the current map configuration stands, communities of color are disenfranchised because of the prioritization of the interests of one political party. Whereas the OC PRA map prioritizes communities that have been historically marginalized, corrects the problems with the current map configuration, and complies with the legal requirements of the Voting Rights Act and Fair Maps Act. The OC PRA map has made communities of interest its top priority when drawing lines. Including consideration of the important testimonies of residents from communities that have been harmed by the current map. The Board needs to correct the significant legal problems with the current map configuration, so I urge you to adopt the OC People's Redistricting Alliance map.

Lopez, Maria [COB]

From: Cary Kaufman <cary@cpabookkeeping.net>
Sent: Thursday, October 28, 2021 2:53 PM
To: COB_Response; Do, Andrew; Foley, Katrina; Anas, Nick; Wagner, Donald; Fourth District; Rodriguez, LaShe; Bartlett, Lisa; james.dinwiddle@ocgov.com; Wangsaporn, Chris; Campbell, Tara
Subject: Redistricting Proposal 2

Attention: This email originated from outside the County of Orange. Use caution when opening attachments or links.

Dear OC Board of Supervisors,

My name is Cary Kaufman, I'm a resident of Rancho Mission Viejo.

As a resident of South Orange County, I am writing to express my support for community redistricting Proposal 2.

Proposal 2 recognizes the diverse nature of Orange County and respects the uniqueness of my community.

South Orange County has a long history of its own and should remain together. Proposal 2 links our canyon communities together. We have our specific concerns of how development and overcrowding affects our limited canyon access roads. As well as our concerns over Fire Safety. Our South OC communities should not be separated as represented in the other proposals.

I strongly urge you to support Proposal 2.

Thank you,

Cary Kaufman, CPA
Principal
CPA Bookkeeping, Inc.
949-503-1029
cary@cpabookkeeping.net
www.cpabookkeeping.net

Lopez, Maria [COB]

From: Michael May <mjmay@danapointanalytics.com>
Sent: Thursday, October 28, 2021 2:17 PM
To: COB_Response; Bartlett, Lisa; Fourth District; Wagner, Donald; Foley, Katrina; Do, Andrew
Cc: Dinwiddie, James; Rodriguez, LaShe; Wangsaporn, Chris; Anas, Nick; Campbell, Tara
Subject: Comment for Upcoming Nov 2 Board Meeting, Redistricting

Attention: This email originated from outside the County of Orange. Use caution when opening attachments or links.

Dear Orange County Supervisors,

I am a resident of Irvine writing to support redistricting Proposal 2. I live in the Irvine Business Complex near SNA. I am a small business owner and my wife works near UCI. Most of our business meetings, shopping, and recreation are done in the Coastal Communities from Huntington, down through Newport and Laguna.

Only Proposal 2 keeps our colleagues, friends, and neighbors who have a costal pattern of life together. Other proposals split the Coastal Communities, or would extend our district deep inland where the communities are very different. The 405 has always been a natural dividing line and a local point of reference for "costal" or "inland." Our coastal communities deserve strong and unified representation on the Board of Supervisors.

Lastly, Proposal 2 as a whole reflects the diverse communities of Orange County well, including the historically Hispanic community in Central Country and the Asian Community in North County. These communities deserve strong representation.

I hope you will support Proposal 2.

Sincerely,
Michael May

Michael May, Ph.D.
Dana Point Analytics
949-435-9619
mjmay@danapointanalytics.com



RECEIVED

2021 OCT 27 AM 10:55

MEMORANDUM

To: Robin Stieler, Clerk of the Board

From: Vice Chair Doug Chaffee, Fourth District

Date: October 27, 2021

CLERK OF THE BOARD
ORANGE COUNTY
BOARD OF SUPERVISORS

Doug Chaffee

RE: November 2, 2021 Board of Supervisor-Item 23 Proposed 2021 Redistricting maps

Vice Chair Doug Chaffee submits these comments as part of the public record and requests the Board of Supervisors take his comments into consideration regarding the proposed 2021 Redistricting Maps. Specific to District 4, Vice Chair Doug Chaffee supports proposed maps # 4 and #5 with modifications, which are sought to minimize the division of cities and census designated places and to make boundaries easily identifiable and understandable by residents.

As to map #4 (attachment A) the requested modifications include:

- Remove the entire City of Yorba Linda from District 4.
- Remove the western portion of Anaheim known as Anaheim Hills stopping at Lakeview St.
- Add the entire Cities of Fullerton and Placentia.
- District 4 line from Placentia City limits should extend south to Lakeview St to the Santa Ana River along the 91 Freeway.
- District 4 line should continue along the Santa Ana river towards 57 Freeway South ending at Katella Ave.
- District 4 line should go West on Katella Ave to State College then North the City to Fullerton City line.

As to map #5 (attachment B) the requested modifications include:

- District 4 line from Placentia City limits should extend south to Lakeview St to the 91 Freeway.
- District 4 line should continue from 91 freeway going East to 57 Freeway South ending at Katella Ave.
- District 4 line should encompass the Eastside of the 57 freeway.

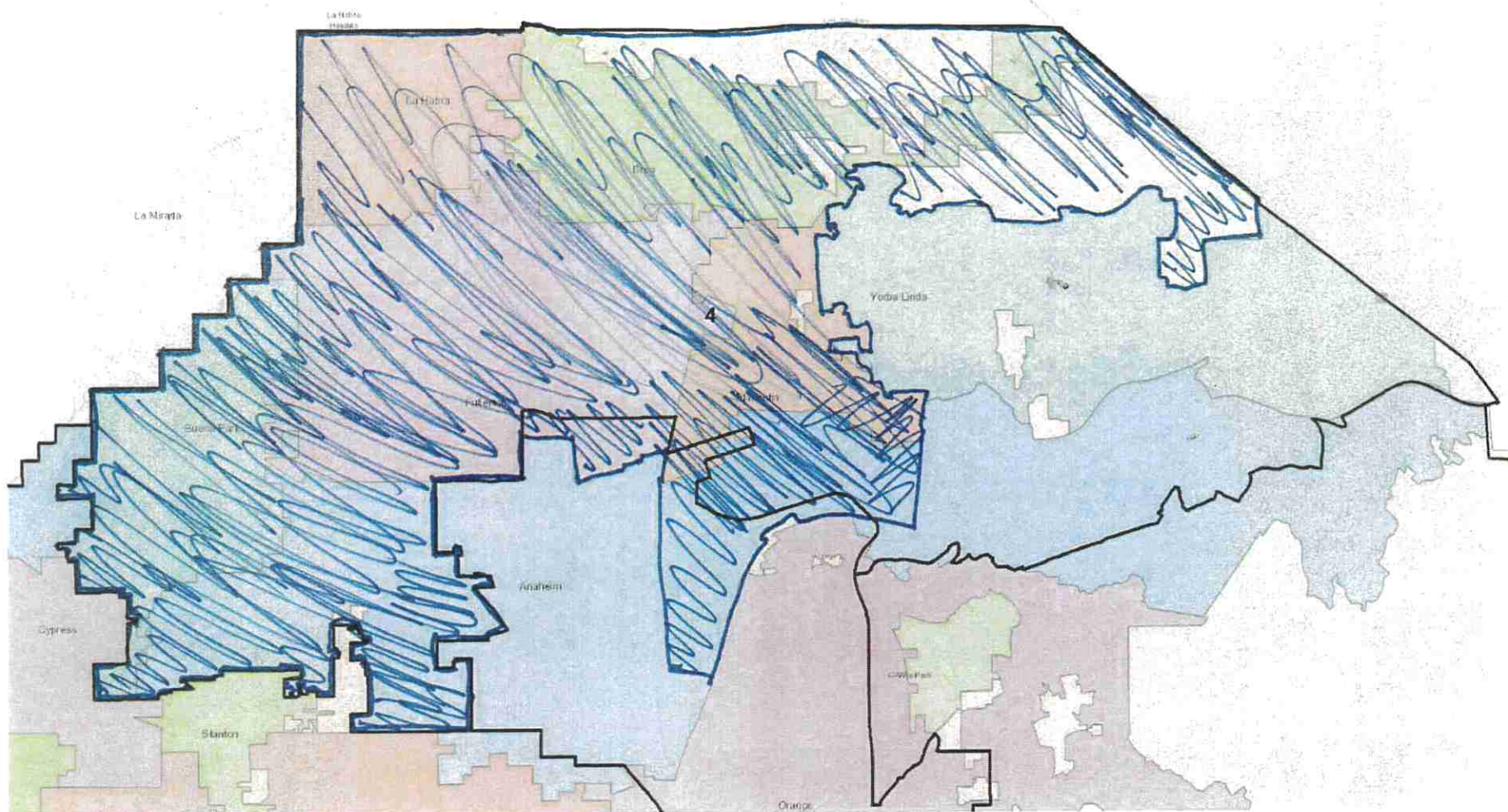
Vice Chair Doug Chaffee requests that maps 4 and 5 be amended to incorporate the proposed modifications above so they be further considered at the November 9, 2021 Board meeting.

Enclosed:

Attachment A (Proposal Map #4 with modifications)

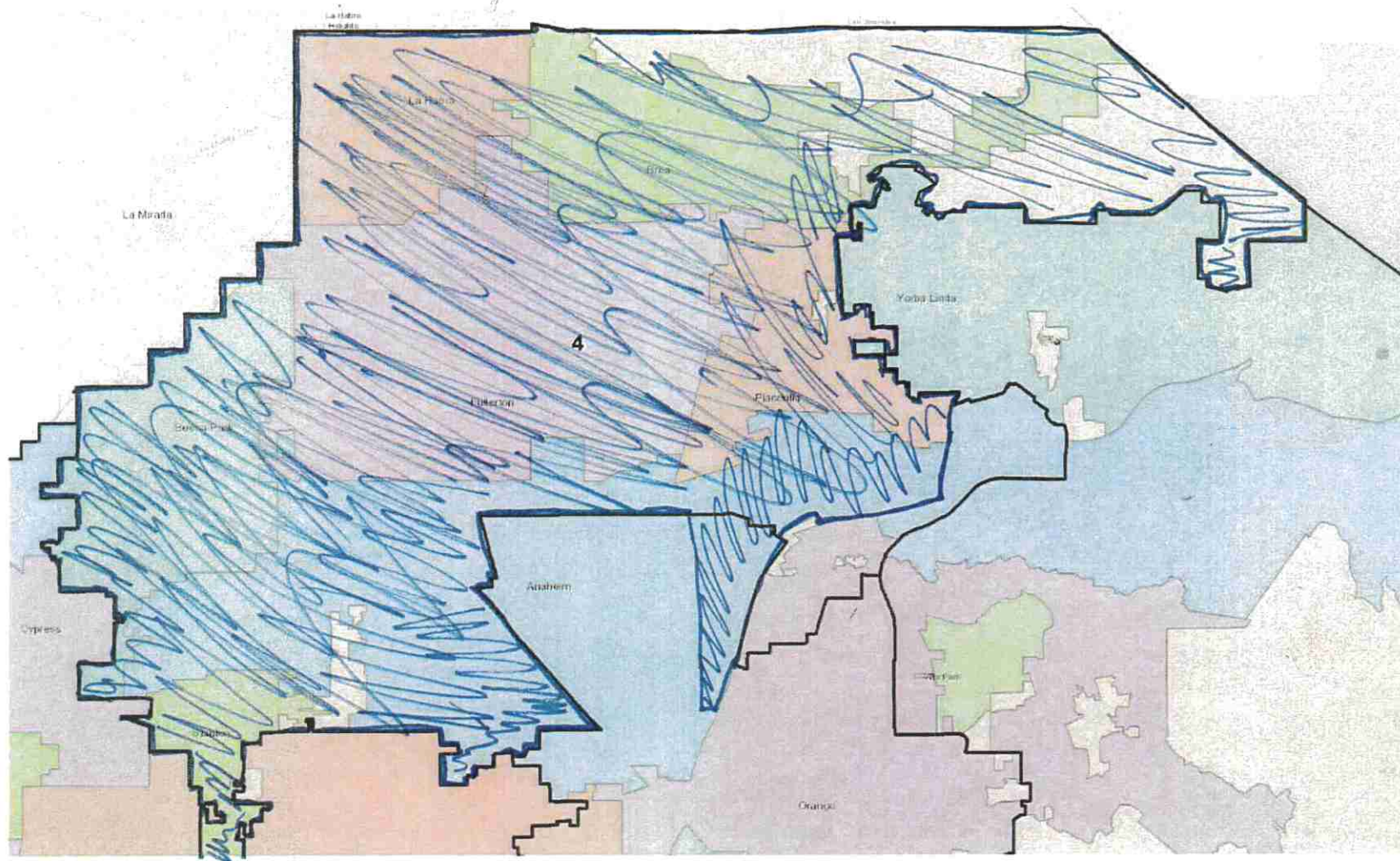
Attachment B (Proposal Map #5 with modifications)

Attachment A (Proposed Map #4 with modifications)



Shaded areas remain in District 4

Attachment B (Proposed Map #5 with modifications)



Shaded areas remain in District 4

Lopez, Maria [COB]

From: Cole Whitcher <colexwar@gmail.com>
Sent: Wednesday, October 27, 2021 11:25 AM
To: COB_Response
Subject: Fwd: Residential Support for Proposal 2 redistricting

Attention: This email originated from outside the County of Orange. Use caution when opening attachments or links.

----- Forwarded message -----

From: **Cole Whitcher** <colexwar@gmail.com>
Date: Wed, Oct 27, 2021 at 11:21 AM
Subject: Residential Support for Proposal 2 redistricting
To: <lisa.bartlett@ocgov.com>, <james.dinwiddie@ocgov.com>, <laShe.rodriquez@ocgov.com>, <fourth.district@ocgov.com>, <tara.campbell@ocgov.com>, <donald.wagner@ocgov.com>, <nick.anas@ocgov.com>, <katrina.foley@ocgov.com>, <chris.wangsaporn@ocgov.com>, <andrew.do@ocgov.com>, <respondes@ocgov.com>

Dear Board of Supervisors,

My name is Cole Whitcher and I am a lifelong resident of Orange county; specifically North East Orange County, Anaheim Hills.

As a local resident for over 33 years; I am writing you all to express my support for community redistricting Proposal 2.

I feel that parts of North and Northeast Orange County are not represented as well with respect to our diversity within the area and how unique our community truly is.

One of our largest issues is the 55 and 91 freeway congestion that spills traffic over into our local side streets of commuters during traffic hours. If you don't live directly by the freeway, this everyday hassle is easy to overlook; but is an everyday part of life for residents.

I am using this as an example because the current district doesn't specifically represent the residents for their local issues as this is one of many. I am uncertain that the current representation doesn't experience it daily, and I feel we are not truly represented for our local needs as best as we could.

I have reviewed the other proposals and I feel that those are continuing to link our community, with other beautiful communities throughout Orange County, but we all experience different issues and I feel that not only does Proposal 2 gives each community with respect to its geography the best local representation; it will also best represent underserved communities while keeping its historical foundation intact.

As a lifelong resident I strongly urge you to support Proposal 2.

Sincerely
Cole Whitcher

--

Cole Whitcher, MBA

The information transmitted (including attachments) is covered by the Electronic Communications Privacy Act, 18 U.S.C. 2510-2521, is intended only for the person(s) or entity/entities to which it is addressed and may contain confidential and/or privileged material. Any review, retransmission, dissemination or other use of, or taking of any action in reliance upon, this information by persons or entities other than the intended recipient(s) is prohibited. If you received this in error, please contact the sender and delete the material from any computer.

--

Cole Whitcher, MBA

The information transmitted (including attachments) is covered by the Electronic Communications Privacy Act, 18 U.S.C. 2510-2521, is intended only for the person(s) or entity/entities to which it is addressed and may contain confidential and/or privileged material. Any review, retransmission, dissemination or other use of, or taking of any action in reliance upon, this information by persons or entities other than the intended recipient(s) is prohibited. If you received this in error, please contact the sender and delete the material from any computer.

Lopez, Maria [COB]

From: Darrell White <dwhite@klw-law.com>
Sent: Wednesday, October 27, 2021 12:15 PM
To: Bartlett, Lisa; Dinwiddie, James; Rodriguez, LaShe; Fourth District; Campbell, Tara; Wagner, Donald; Anas, Nick; Foley, Katrina; Wangsaporn, Chris; Do, Andrew; COB_Response
Cc: seth@lincolnclub.org
Subject: Comments For Upcoming Board Meetings, Orange County Redistricting - Support for Proposal 2

Attention: This email originated from outside the County of Orange. Use caution when opening attachments or links.

Dear Board of Supervisors,

I write in reference to Orange County Redistricting. I live in Costa Mesa with my wife and three children. My business is located in Irvine. I am in strong support of the Proposal 2 Map.

As a past president of the Hispanic Bar Association of Orange County, I can attest to the incredible Latino community that continues to thrive and grow in OC. Proposal 2 best represents the diverse communities in Orange County, and makes history by giving the strongest possible representation of OC's growing Latino, as well as, API communities.

As with each district, Coastal OC has a strong sense of community and identity. Our coastal communities should stay together in a strong, unified district, to keep our beloved coastline a world class place to live. Proposal 2 gives stronger representation to OC's coastal communities than any other proposal. Issues that affect the coast of Orange County affect all coastal Orange County. We deserve a representative that is focused on our issues.

I urge you to support Proposal 2.

Very truly yours,

Darrell White



**KIMURA LONDON
& WHITE LLP**

Darrell P. White
Kimura London & White LLP
3 Park Plaza, Suite 1520, Irvine, CA 92614
P 949.474.0940 | F 949.485.2946
E dwhite@klw-law.com | W www.klw-law.com



Before you print this e-mail, please think of our environment.

Confidentiality Notice: This message is being sent on behalf of a lawyer. It is intended exclusively for the individual or entity to which it is addressed. This communication may contain information that is proprietary, privileged, confidential, or otherwise legally exempt from disclosure. If you are not the named addressee, or if this was sent to you in error, you are not authorized to read, print, retain, copy or disseminate this message or any part thereof. If you have received this message in error, please notify the sender immediately by email and delete all copies of the message and any attachments.

Not Tax Advice. Nothing construed herein shall constitute tax advice of any kind.

Guillen, Dora

From: Brandon Day <brandon_day@msn.com>
Sent: Wednesday, October 27, 2021 12:19 PM
To: COB_Response
Subject: Comments on redistricting

Attention: This email originated from outside the County of Orange. Use caution when opening attachments or links.

Dear Members of the Board of Supervisors,

RE: Redistricting Meeting – Support of Map 2

My name is Brandon Day, and I am a resident of Dana Point and a member of the 5th District.

As a member of the 5th district, and one who has followed the California Redistricting Commission practices, I implore you to support Map 2 in the upcoming redistricting meeting you and your other Supervisors will soon have.

Map 2 accomplishes what the state commission was set up to do, it focuses on the development of a majority Hispanic District, proposed Dist 1. It also accomplishes a district for the Asian American community, Dist 4.

The benefit for my district would be that the canyon communities would be linked together (fire hazards) and enjoy one representative. And, most of the coast would be moved to District 2, which naturally has its own unique character attributes.

There is no question, Proposal 2 recognizes the diverse nature of our county and respects the uniqueness of my community; satisfies the civil rights components of redistricting, provides a community for those that have been marginalized in the past, runs along natural boundaries and overall it makes the most sense.

I strongly encourage you to support Map 2. Supervisor Do, I thank you in advance for your consideration.

Sincerely

Brandon Day, Resident Dana Point, CA

Guillen, Dora

From: Glenn Woody <gdwoody@gmail.com>
Sent: Wednesday, October 27, 2021 2:54 PM
To: Bartlett, Lisa; Dinwiddie, James; Rodriguez, LaShe; Fourth District; Campbell, Tara; Wagner, Donald; Anas, Nick; Foley, Katrina; Wangsaporn, Chris; Do, Andrew; COB_Response
Subject: Redistricting

Attention: This email originated from outside the County of Orange. Use caution when opening attachments or links.

My name is Glenn Woody and I live in Costa Mesa. I am writing to encourage you to vote for Proposed Map 2.

Map 2, more than any of the other proposed maps, provides for communities of like attributes to be represented together.

Particularly, it keeps communities such as growing Latino groups and growing Asian groups together.

It recognizes best the unique diversity that exists in Orange County.

While none of the Maps will seem perfect to anyone, much less everyone, Map 2 comes the closest to fairly representing all constituents.

Please vote for Map #2.

Glenn D. Woody
CFP Board Emeritus™
3445 Meadow Brook 55-365 Riviera
Costa Mesa, CA 92626 La Quinta, CA 92253
714-653-8575
gdwoody@gmail.com

Guillen, Dora

From: wslindholm@gmail.com
Sent: Wednesday, October 27, 2021 2:50 PM
To: Bartlett, Lisa; Dinwiddie, James; Rodriguez, LaShe; Fourth District; Campbell, Tara; Wagner, Donald; Anas, Nick; Foley, Katrina; Wangsaporn, Chris; Do, Andrew; COB_Response; seth@lincolnclub.org; 'Teresa Hernandez'
Cc: Linda Lindholm; wslindholm@gmail.com
Subject: FW: Supervisors have received 50 emails all from Dems, this is our chance please email each of them Map 2 is the winner. Teresa
Attachments: scans@buschgroup.org_20211027_135513.pdf

Attention: This email originated from outside the County of Orange. Use caution when opening attachments or links.

Dear Supervisors!

As a resident of Laguna Niguel in the current 5th District I am writing to express my support for community redistricting Proposal 2, see attached.

Proposal 2 recognizes the diverse nature of our county and respects the uniqueness of my community. Specifically, other maps disregard the large Hispanic as well as the large Asian Communities of Orange County.

East Orange County is uniquely impacted by traffic and congestion as our community is affected most by commuter traffic along the I-5 and I-405 freeways. Laguna Niguel would be in the new District 2 which accurately represents the Beach Communities. It would be separated from District 5 by the 405/I-5 corridor and recognizes the contiguous nature of the cities East of the I-5

Proposal 2 clearly gives the greatest amount of representation for Orange County's underserved communities while keeping the historical ties between the different areas of the county intact.

I strongly urge you to support Proposal 2.

Sincerely: Wayne Lindholm

ORANGE COUNTY REDISTRICTING

Supporting Documents for Proposal 2

County of Orange 2021 Redistricting

Proposal 2 Map

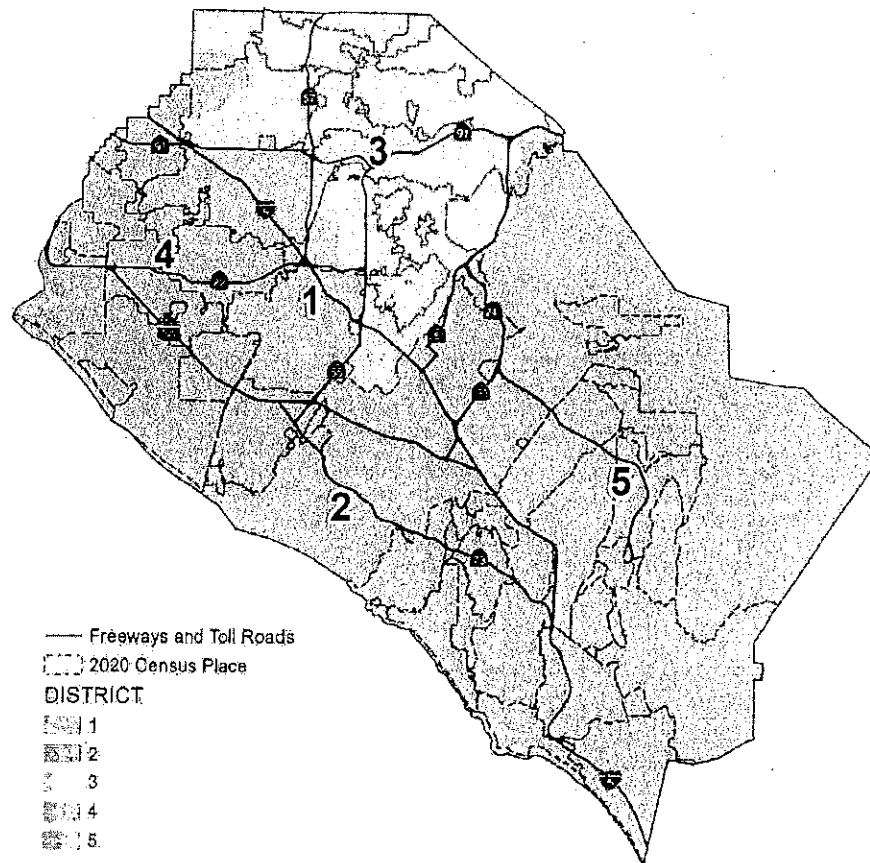


Table of Contents:

1. Talking Points
2. Contact Information
3. In-Person Meeting Information

Guillen, Dora

From: Diana Killy <dkilly79@zohomail.com>
Sent: Wednesday, October 27, 2021 2:34 PM
To: Bartlett, Lisa; Dinwiddie, James; Rodriguez, LaShe; Fourth District; Campbell, Tara; Wagner, Donald; Anas, Nick; Foley, Katrina; Wangsaporn, Chris; COB_Response; Do, Andrew
Subject: ORANGE COUNTY REDISTRICTING

Attention: This email originated from outside the County of Orange. Use caution when opening attachments or links.

Orange County Board of Supervisors,

My name is Diana Killy and I've been a resident of Irvine for over 40 years.

As a resident of South Orange County, I'm in general opposed a community redistricting. However, if I would have to make a choice, I would support community redistricting Proposal #2.

For many years I enjoyed the uniqueness and diversity of my community and I would like to keep it this way.

As the residents of Irvine, we are constantly faced with constant traffic congestions, especially Jeffrey/University and Culver area for us. 405 and 5 freeways are congested most of the day. On the other hand, Irvine is a beautiful area with many parks, lakes, and shops conveniently located close to our property.

Our community always stayed well connected and I believe we should keep it this way; therefore, I see no reason to separate us as suggested in Proposals #1, #3, #4, and #5.

Proposal #2 allows us to keep the connection between the different areas of our county unchanged while still giving us great representation.

I strongly urge you to support Proposal #2.

Diana Killy, Irvine
Sent using Zoho Mail

Guillen, Dora

From: Wayne Lindholm <wslindholm@gmail.com>
Sent: Wednesday, October 27, 2021 8:35 PM
To: Teresa Hernandez
Cc: Bartlett, Lisa; Dinwiddie, James; Rodriguez, LaShe; Fourth District; Campbell, Tara; Wagner, Donald; Anas, Nick; Foley, Katrina; Wangsaporn, Chris; Do, Andrew; COB_Response; seth@lincolnclub.org; Linda Lindholm
Subject: Re: Supervisors have received 50 emails all from Dems, this is our chance please email each of them Map 2 is the winner. Teresa

Attention: This email originated from outside the County of Orange. Use caution when opening attachments or links.

I know they are getting several from LC members.

"Life is not a problem to be solved, but an adventure to be lived". John Eldredge

On Oct 27, 2021, at 8:06 PM, Teresa Hernandez <twinsok@mac.com> wrote:

Thank you!

Sent from my iPhone

On Oct 27, 2021, at 2:50 PM, wslindholm@gmail.com wrote:

Dear Supervisors!

As a resident of Laguna Niguel in the current 5th District I am writing to express my support for community redistricting Proposal 2, see attached.

Proposal 2 recognizes the diverse nature of our county and respects the uniqueness of my community. Specifically, other maps disregard the large Hispanic as well as the large Asian Communities of Orange County.

East Orange County is uniquely impacted by traffic and congestion as our community is affected most by commuter traffic along the I-5 and I-405 freeways. Laguna Niguel would be in the new District 2 which accurately represents the Beach Communities. It would be separated from District 5 by the

405/I-5 corridor and recognizes the contiguous nature of the cities Easy of the I-5

Proposal 2 clearly gives the greatest amount of representation for Orange County's underserved communities while keeping the historical ties between the different areas of the county intact.

I strongly urge you to support Proposal 2.

Sincerely: Wayne Lindholm

<scans@buschgroup.org_20211027_135513.pdf>

Guillen, Dora

From: Teresa Hernandez <twinsok@mac.com>
Sent: Wednesday, October 27, 2021 8:06 PM
To: wslindholm@gmail.com
Cc: Bartlett, Lisa; Dinwiddie, James; Rodriguez, LaShe; Fourth District; Campbell, Tara; Wagner, Donald; Anas, Nick; Foley, Katrina; Wangsaporn, Chris; Do, Andrew; COB_Response; seth@lincolclub.org; Linda Lindholm
Subject: Re: Supervisors have received 50 emails all from Dems, this is our chance please email each of them Map 2 is the winner. Teresa

Attention: This email originated from outside the County of Orange. Use caution when opening attachments or links.

Thank you!

Sent from my iPhone

On Oct 27, 2021, at 2:50 PM, wslindholm@gmail.com wrote:

Dear Supervisors!

As a resident of Laguna Niguel in the current 5th District I am writing to express my support for community redistricting Proposal 2, see attached.

Proposal 2 recognizes the diverse nature of our county and respects the uniqueness of my community. Specifically, other maps disregard the large Hispanic as well as the large Asian Communities of Orange County.

East Orange County is uniquely impacted by traffic and congestion as our community is affected most by commuter traffic along the I-5 and I-405 freeways. Laguna Niguel would be in the new District 2 which accurately represents the Beach Communities. It would be separated from District 5 by the 405/I-5 corridor and recognizes the contiguous nature of the cities Easy of the I-5

Proposal 2 clearly gives the greatest amount of representation for Orange County's underserved communities while keeping the historical ties between the different areas of the county intact.

I strongly urge you to support Proposal 2.

Sincerely: Wayne Lindholm

Guillen, Dora

From: Morgan White <morganwhite02@gmail.com>
Sent: Wednesday, October 27, 2021 7:57 PM
To: Bartlett, Lisa; Dinwiddie, James; Rodriguez, LaShe; Fourth District; Campbell, Tara; Wagner, Donald; Anas, Nick; Foley, Katrina; Wangsaporn, Chris; Do, Andrew; COB_Response
Subject: Vote yes on Proposed District Map 2

Attention: This email originated from outside the County of Orange. Use caution when opening attachments or links.

Dear Board of Supervisors,

As a resident of Costa Mesa, I urge you to support proposal 2 for the proposed county redistricting map. I believe this map will give us the best sense of community and the best representation. As a latino family this map gives our community the best representation. We need proposal 2 which gives the best opportunity to focus on our district's issues.

I strongly urge you to support Proposal 2

Sincerely,

Morgan White

Guillen, Dora

From: omts@cox.net
Sent: Wednesday, October 27, 2021 5:16 PM
To: Bartlett, Lisa; Rodríguez, LaShe; Fourth District; Campbell, Tara; Wagner, Donald; Nick.Anas@ocgov.co; Foley, Katrina; Wangsaporn, Chris; Do, Andrew; COB_Response; Dinwiddie, James
Subject: Comments for Upcoming Board Meetings: Orange County Redistricting

Attention: This email originated from outside the County of Orange. Use caution when opening attachments or links.

Honorable Supervisors,

Thank you for the opportunity to submit comments on the proposed redistricting of Orange County's Supervisorial Districts.

My name is Lisa Ohlund and I am a resident of San Juan Capistrano.

I am writing to express my support for Proposal 2.

From a purely personal perspective, Proposal 2 uses the natural barrier of Interstate 5 as well as city boundaries, to continue to link our communities together, it also links the canyon communities together. From the perspective of the entire County, Proposal 2 would give the strongest representation to Orange County's growing Latino and Asian/Pacific Islander community.

Proposal 2 is respectful and representative of underserved communities while keeping intact the historical ties between communities as much as possible.

I strongly urge you to support Proposal 2.

Very truly yours,
Lisa Ohlund

Guillen, Dora

From: Darren Gallaway <dgallaway@trcfinancial.com>
Sent: Wednesday, October 27, 2021 4:39 PM
To: Bartlett, Lisa; Dinwiddie, James; Rodriguez, LaShe; Fourth District; Campbell, Tara; Wagner, Donald; Anas, Nick; Foley, Katrina; Wangsaporn, Chris; Do, Andrew; COB_Response
Subject: My Support of Proposal 2

Attention: This email originated from outside the County of Orange. Use caution when opening attachments or links.

Dear Board of Supervisors,

My name is Darren Gallaway and I have been a homeowner in Coto de Caza since 2007.

As a 14 year resident of South Orange County, I am writing to express my support for community redistricting Proposal 2.

Whether it is traffic, the toll roads, or our unique wildfire concerns, Proposal 2 recognizes the importance of keeping this area together.

South Orange County has traditionally been linked together and I see no reason for us to be separated as represented in the other proposals.

I strongly urge you to support Proposal 2.

Sincerely,

Darren Gallaway, CLU, RHU, ChFC

TRC Financial

Telephone: (949) 509-2940 ext. 227

Direct Line: (949) 725-2366

Follow On | [Web](#) | [LinkedIn](#) | [Twitter](#)

Securities offered through M Holdings Securities, Inc. A Registered Broker/Dealer, Member FINRA/SIPC. TRC Financial is independently owned and operated.

For important information related to M Securities, refer to the M Securities' Client Relationship Summary (Form CRS) by navigating to <https://mfin.com/m-securities>.

This email and any files transmitted with it are confidential and intended solely for the use of the individual or entity to whom they are addressed. This information is For Official Use Only. Unauthorized disclosure or misuse of this Personal Information including, but not limited to: copying, disclosure, distribution, is strictly prohibited and may result in criminal and/or civil penalties. If you have received this email in error, please notify the sender immediately and delete this email and all attachments from your system.

Please do not send transaction instructions via email or fax or leave them on voicemail as those instructions cannot be honored. If you wish to initiate a transaction, please contact us.

All inbound and outbound email from this email address may be monitored.

1 Post, Suite 150, Irvine, CA 92618 | Individual CA License #0B52893 | Corporate CA License #0E14614

Guillen, Dora

From: W C <wcrimp@gmail.com>
Sent: Wednesday, October 27, 2021 4:14 PM
To: COB_Response
Subject: Redistricting map

Attention: This email originated from outside the County of Orange. Use caution when opening attachments or links.

I support **map #2** for redistricting. It provides for a full hispanic district, a full asian district and a coastal district and is a balanced approach to redistricting. I am a legal resident and homeowner in Orange County.

Thanks -- Wendy Crimp
220 Cypress Drive
Laguna Beach, CA 92651

Guillen, Dora

From: Morgan White <morganwhite02@gmail.com>
Sent: Wednesday, October 27, 2021 7:38 PM
To: Foley, Katrina
Cc: Anas, Nick; COB_Response
Subject: Vote yes on Proposed District Map 2

Attention: This email originated from outside the County of Orange. Use caution when opening attachments or links.

Dear Supervisor Foley,

I urge you to support proposal 2 for the proposed county redistricting map. As a constituent of your district I believe this map will give us the best sense of community and the best representation. As a latino family this map gives us the best representation. We need to be given the best opportunity to focus on our district's issues and believe this map will give us the best opportunity.

Sincerely,

Morgan White

Osborn, Rachael

From: Christopher Hitchcock <chitchcock01@gmail.com>
Sent: Wednesday, October 27, 2021 5:07 PM
To: 2021 Orange County Redistricting
Subject: I Support the OC PRA Map

Follow Up Flag: Follow up
Flag Status: Completed

Attention: This email originated from outside the County of Orange. Use caution when opening attachments or links.

My name is Christopher Hitchcock and I am a resident of Fullerton. I'm writing to support the OC People's Redistricting Alliance map. As the current map configuration stands, communities of color are disenfranchised because of the prioritization of the interests of one political party. Whereas the OC PRA map prioritizes communities that have been historically marginalized, corrects the problems with the current map configuration, and complies with the legal requirements of the Voting Rights Act and Fair Maps Act. The OC PRA map has made communities of interest its top priority when drawing lines. Including consideration of the important testimonies of residents from communities that have been harmed by the current map. The Board needs to correct the significant legal problems with the current map configuration, so I urge you to adopt the OC People's Redistricting Alliance map.

Osborn, Rachael

From: BB <brucebrainerd@me.com>
Sent: Tuesday, October 26, 2021 10:13 PM
To: 2021 Orange County Redistricting
Subject: Fwd: I Support the OC PRA Map

Follow Up Flag: Follow up
Flag Status: Completed

Attention: This email originated from outside the County of Orange. Use caution when opening attachments or links.

From: BB <brucebrainerd@me.com>

Date: October 26, 2021 at 10:08:12 PM PDT
To: redistricting@ocgov.com
Subject: I Support the OC PRA Map

My name is Bruce Brainerd and I am a resident of Dana Point and a resident of Orange County for 23 years. I'm writing to support the OC People's Redistricting Alliance map. As the current map configuration stands, communities of color are disenfranchised because of the prioritization of the interests of one political party. Whereas the OC PRA map prioritizes communities that have been historically marginalized, corrects the problems with the current map configuration, and complies with the legal requirements of the Voting Rights Act and Fair Maps Act. The OC PRA map has made communities of interest its top priority when drawing lines. Including consideration of the important testimonies of residents from communities that have been harmed by the current map. The Board needs to correct the significant legal problems with the current map configuration. The future is here and your responsibility is to serve those in your communities. Isn't it time to do the right thing and stop the politics that hurt so many? Be the change you thought you'd be when you went into public service. Join us by adopting the OC People's Redistricting Alliance map.

Sincerely,

Bruce Brainerd
 Resident
 38 Saint Kitts
 Dana Point, CA. 92639
 949-304-8708

Osborn, Rachael

From: jake.bakovsky <jake.bakovsky@gmail.com>
Sent: Tuesday, October 26, 2021 6:55 PM
To: 2021 Orange County Redistricting
Subject: I Support the OC PRA Map

Follow Up Flag: Follow up
Flag Status: Completed

Attention: This email originated from outside the County of Orange. Use caution when opening attachments or links.

My name is ____ and I am a resident of _____. I'm writing to support the OC People's Redistricting Alliance map. As the current map configuration stands, communities of color are disenfranchised because of the prioritization of the interests of one political party. Whereas the OC PRA map prioritizes communities that have been historically marginalized, corrects the problems with the current map configuration, and complies with the legal requirements of the Voting Rights Act and Fair Maps Act. The OC PRA map has made communities of interest its top priority when drawing lines. Including consideration of the important testimonies of residents from communities that have been harmed by the current map. The Board needs to correct the significant legal problems with the current map configuration, so I urge you to adopt the OC People's Redistricting Alliance map.

Jacob

Osborn, Rachael

From: Tori Maricich <tori@maricich.com>
Sent: Tuesday, October 26, 2021 4:23 PM
To: 2021 Orange County Redistricting
Subject: I Support the OC PRA Map

Follow Up Flag: Follow up
Flag Status: Completed

Attention: This email originated from outside the County of Orange. Use caution when opening attachments or links.

My name is Tori Maricich and I am a resident of Huntington Beach. I am also a Nurse Practitioner who wants to see ALL of my patients to have fair representation. I'm writing to support the OC People's Redistricting Alliance map. As the current map configuration stands, communities of color are disenfranchised because of the prioritization of the interests of one political party. Whereas the OC PRA map prioritizes communities that have been historically marginalized, corrects the problems with the current map configuration, and complies with the legal requirements of the Voting Rights Act and Fair Maps Act. The OC PRA map has made communities of interest its top priority when drawing lines. Including consideration of the important testimonies of residents from communities that have been harmed by the current map. The Board needs to correct the significant legal problems with the current map configuration, so I urge you to adopt the OC People's Redistricting Alliance map.

Sent from my iPhone

Osborn, Rachael

From: Sharon Kerton <skerton320@yahoo.com>
Sent: Tuesday, October 26, 2021 4:11 PM
To: 2021 Orange County Redistricting
Subject: I Support the OC PRA Map

Follow Up Flag: Follow up
Flag Status: Completed

Attention: This email originated from outside the County of Orange. Use caution when opening attachments or links.

My name is Sharon Kerton and I am a resident of Orange County, California. I'm writing to support the OC People's Redistricting Alliance map. As the current map configuration stands, communities of color are disenfranchised because of the prioritization of the interests of one political party. Whereas the OC PRA map prioritizes communities that have been historically marginalized, corrects the problems with the current map configuration, and complies with the legal requirements of the Voting Rights Act and Fair Maps Act. The OC PRA map has made communities of interest its top priority when drawing lines. Including consideration of the important testimonies of residents from communities that have been harmed by the current map. The Board needs to correct the significant legal problems with the current map configuration, so I urge you to adopt the OC People's Redistricting Alliance map.

Sent from my iPhone

Osborn, Rachael

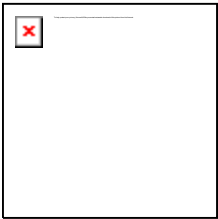
From: Louis Jack <ljack@icloud.com>
Sent: Tuesday, October 26, 2021 4:00 PM
To: 2021 Orange County Redistricting
Subject: I Support the OC PRA Map

Follow Up Flag: Follow up
Flag Status: Completed

Attention: This email originated from outside the County of Orange. Use caution when opening attachments or links.

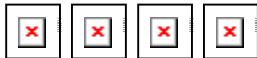
My name is Louis Jack and I am a resident of Laguna Niguel. I'm writing to support the OC People's Redistricting Alliance map. As the current map configuration stands, communities of color are disenfranchised because of the prioritization of the interests of one political party. Whereas the OC PRA map prioritizes communities that have been historically marginalized, corrects the problems with the current map configuration, and complies with the legal requirements of the Voting Rights Act and Fair Maps Act. The OC PRA map has made communities of interest its top priority when drawing lines. Including consideration of the important testimonies of residents from communities that have been harmed by the current map. The Board needs to correct the significant legal problems with the current map configuration, so I urge you to adopt the OC People's Redistricting Alliance map.

Thanks! Sincerely, **Louis Jack**



Louis B. Jack

949-510-2024
www.louisbjack.com



Osborn, Rachael

From: Peter Chu <pinchungchu@gmail.com>
Sent: Tuesday, October 26, 2021 3:44 PM
To: 2021 Orange County Redistricting
Subject: Fair Redistricting

Follow Up Flag: Follow up
Flag Status: Completed

Attention: This email originated from outside the County of Orange. Use caution when opening attachments or links.

My name is Peter Chu and I am a 20-year resident of Yorba Linda. I support the OC People's Redistricting Alliance Supervisorial map. This map prioritizes communities that have been historically marginalized, corrects the problems with the current configuration, and complies with the legal requirements of the Voting Rights Act and Fair Maps Act. The current map configuration has disenfranchised communities of color by prioritizing the interests of one political party.

The OC PRA map has made communities of interest its top priority when drawing lines, considering the important testimonies of residents from communities that have been harmed by the current configuration.

The board needs to correct the significant legal problems with the current map configuration. I urge you to adopt the OC People's Redistricting Alliance map.

Sincerely,
Peter Chu

Osborn, Rachael

From: milodmitri@gmail.com
Sent: Tuesday, October 26, 2021 2:55 PM
To: 2021 Orange County Redistricting
Subject: I Support the OC PRA Map

Follow Up Flag: Follow up
Flag Status: Completed

Attention: This email originated from outside the County of Orange. Use caution when opening attachments or links.

My name is Katie and I am a resident of Newport Beach. I'm writing to support the OC People's Redistricting Alliance map. As the current map configuration stands, communities of color are disenfranchised because of the prioritization of the interests of one political party. Whereas the OC PRA map prioritizes communities that have been historically marginalized, corrects the problems with the current map configuration, and complies with the legal requirements of the Voting Rights Act and Fair Maps Act. The OC PRA map has made communities of interest its top priority when drawing lines. Including consideration of the important testimonies of residents from communities that have been harmed by the current map. The Board needs to correct the significant legal problems with the current map configuration, so I urge you to adopt the OC People's Redistricting Alliance map.

Sent from my iPhone

Osborn, Rachael

From: S. Kornreich <skreich1@yahoo.com>
Sent: Tuesday, October 26, 2021 1:49 PM
To: 2021 Orange County Redistricting
Subject: Redistricting

Follow Up Flag: Follow up
Flag Status: Completed

Attention: This email originated from outside the County of Orange. Use caution when opening attachments or links.

My name is Susan Kornreich and I am a resident of Trabuco Canyon/Coto de Caza. I support the OC People's Redistricting Alliance Supervisorial map. This map prioritizes communities that have been historically marginalized, corrects the problems with the current configuration, and complies with the legal requirements of the Voting Rights Act and Fair Maps Act. The current map configuration has disenfranchised communities of color by prioritizing the interests of one political party.

The OC PRA map has made communities of interest its top priority when drawing lines, considering the important testimonies of residents from communities that have been harmed by the current configuration.

The board needs to correct the significant legal problems with the current map configuration. I urge you to adopt the OC People's Redistricting Alliance map.

Osborn, Rachael

From: Monica White <mwhite11@icloud.com>
Sent: Tuesday, October 26, 2021 1:47 PM
To: 2021 Orange County Redistricting
Subject: OC Redistricting

Follow Up Flag: Follow up
Flag Status: Completed

Attention: This email originated from outside the County of Orange. Use caution when opening attachments or links.

The Honorable Board of Supervisors:

My name is Monica White, and I am a resident of Dana Point. I support the OC People's Redistricting Alliance Supervisorial map. This map prioritizes communities that have been historically marginalized, corrects the problems with the current configuration, and complies with the legal requirements of the Voting Rights Act and Fair Maps Act. **The current map configuration has disenfranchised communities of color by prioritizing the interests of one political party.**

The OC PRA map has made communities of interest its top priority when drawing lines, considering the important testimonies of residents from communities that have been harmed by the current configuration.

The Board needs to correct the significant legal problems with the current map configuration. I urge you to adopt the OC People's Redistricting Alliance map.

Sincerely,
Monica White

Osborn, Rachael

From: Susan Kornreich <skreich1@yahoo.com>
Sent: Tuesday, October 26, 2021 1:42 PM
To: 2021 Orange County Redistricting
Subject: I Support the OC PRA Map

Follow Up Flag: Follow up
Flag Status: Completed

Attention: This email originated from outside the County of Orange. Use caution when opening attachments or links.

My name is ____ and I am a resident of _____. I'm writing to support the OC People's Redistricting Alliance map. As the current map configuration stands, communities of color are disenfranchised because of the prioritization of the interests of one political party. Whereas the OC PRA map prioritizes communities that have been historically marginalized, corrects the problems with the current map configuration, and complies with the legal requirements of the Voting Rights Act and Fair Maps Act. The OC PRA map has made communities of interest its top priority when drawing lines. Including consideration of the important testimonies of residents from communities that have been harmed by the current map. The Board needs to correct the significant legal problems with the current map configuration, so I urge you to adopt the OC People's Redistricting Alliance map.

Sent from my iPhone

Osborn, Rachael

From: Response@ocgov.com on behalf of OC Clerk of the Board <Response@ocgov.com>
Sent: Tuesday, October 26, 2021 11:57 AM
To: 2021 Orange County Redistricting
Subject: 2021 Redistricting Idea Form - ONLINE FORM SUBMISSION

Follow Up Flag: Follow up
Flag Status: Completed

Attention: This email originated from outside the County of Orange. Use caution when opening attachments or links.

Submitted on Tue, 10/26/2021 - 11:56

Submitted by: Anonymous

Submitted values are:

Name

Andrew Pulver

Organization

LOS ALAMITOS UNIFIED

Phone Number

[5627994700](tel:5627994700)

Email

apulver@losal.org

City/County

Los Alamitos

My ideas/comments are as follows

Thank you for including the public and soliciting feedback on the OC Supervisor redistricting process. As a unified school district superintendent that serves three communities (Los Alamitos, Seal Beach and the Rossmoor Community) I prefer the draft maps that keep our school district boundaries in one supervisor area. Of the 8 draft maps, I prefer map 7. It splits cities and communities the least of all 8 maps and keeps the percentage spread under 6%.

From a school district perspective, I do not like draft maps 1, 6 and 8 as these maps divide our school district community into two supervisor areas.

Thank you for allowing me to provide input into this process.

Dr. Andrew Pulver

Los Alamitos Unified School District Superintendent

Osborn, Rachael

From: Response@ocgov.com on behalf of OC Clerk of the Board <Response@ocgov.com>
Sent: Tuesday, October 26, 2021 11:20 AM
To: 2021 Orange County Redistricting
Subject: 2021 Redistricting Idea Form - ONLINE FORM SUBMISSION

Follow Up Flag: Follow up
Flag Status: Completed

Attention: This email originated from outside the County of Orange. Use caution when opening attachments or links.

Submitted on Tue, 10/26/2021 - 11:19

Submitted by: Anonymous

Submitted values are:

Name

Sora Tanjasiri

Email

stanjasiri1@gmail.com

City/County

Irvine

My ideas/comments are as follows

Maps 1-4 and 7 are terrible for Irvine - cuts my city up into 2-3 supervisory districts without any justification except where the freeways run. As a 22 year resident of Irvine, this makes no sense whatsoever.

Maps 6 and 8 do not make any sense because of the lack of similarities between Huntington Beach and the proposed other cities.

Map 5 is the only one that reflects how communities in Orange County actually identify - by maximizing cities remain in tact, grouping cities with like other cities that share common interests and goals, and reflecting how residents actually interact. I beg you to consider this map the most seriously - let's stop gerrymandering politics from invading our county!!!

Osborn, Rachael

From: Yvonne Lee <ylee4@hotmail.com>
Sent: Tuesday, October 26, 2021 11:18 AM
To: 2021 Orange County Redistricting
Subject: Orange County Redistricting 2021

Follow Up Flag: Follow up
Flag Status: Completed

Attention: This email originated from outside the County of Orange. Use caution when opening attachments or links.

My name is Yvonne Lee and I live in Los Alamitos. I have been reviewing the redistricting maps and have concerns about the redistricting of Los Alamitos. I have looked at all the proposed maps and noticed that Los Alamitos' redistricting plan would be separate from the rest of Orange County. I presume that means it would be included with the districts in Long Beach.

I am opposed to this planned redistricting as it puts us in a legislative district whose majority voting population resides in Los Angeles County. We are located in Orange County and share many common social, economic, civic, educational, law enforcement, emergency and government services. We benefit from similar legislative interests and common representation in government.

Currently we share a unified school district with Seal Beach. This redistricting would change our representation in the Legislature when it comes to school issues.

Los Alamitos resides in Orange County. Keeping us within the county border will help keep our communities in tact. I find it hard to understand why Los Alamitos would be removed from Orange County and put into Los Angeles County. I do not see a benefit to removing Los Alamitos from the Orange County districting.

Thank you for your time.

Yvonne Lee

Sent from my iPad

Osborn, Rachael

From: Response@ocgov.com on behalf of OC Clerk of the Board <Response@ocgov.com>
Sent: Monday, October 25, 2021 11:02 PM
To: 2021 Orange County Redistricting
Subject: 2021 Redistricting Idea Form - ONLINE FORM SUBMISSION

Follow Up Flag: Follow up
Flag Status: Completed

Attention: This email originated from outside the County of Orange. Use caution when opening attachments or links.

Submitted on Mon, 10/25/2021 - 23:02

Submitted by: Anonymous

Submitted values are:

Name

Fernando Mendoza

Organization

Citizen, Los Alamitos/Rossmoor

City/County

Los Alamitos/Orange

My ideas/comments are as follows

Hello,

I am a resident of Rossmoor. As you know Rossmoor is a small unincorporated city in Orange County that is intimately tied to the cities of Los Alamitos and Seal Beach. Any map that divides this region instead of keeping all three cities as a whole would be a disservice to Rossmoor and the other two cities as well. Please keep us united. My preferred maps are 3, 4, 5 or 7.

Thank you.

Osborn, Rachael

From: Response@ocgov.com on behalf of OC Clerk of the Board <Response@ocgov.com>
Sent: Monday, October 25, 2021 8:21 PM
To: 2021 Orange County Redistricting
Subject: 2021 Redistricting Idea Form - ONLINE FORM SUBMISSION

Follow Up Flag: Follow up
Flag Status: Completed

Attention: This email originated from outside the County of Orange. Use caution when opening attachments or links.

Submitted on Mon, 10/25/2021 - 20:20

Submitted by: Anonymous

Submitted values are:

Name

Matthew Bliss

Email

manascmaf@yahoo.com

City/County

Rossmoor

My ideas/comments are as follows

Any proposal that separates Rossmoor, Seal Beach and Los Alamitos is ill conceived and should not be chosen as an option. The three communities share our beloved Los Alamitos School District, infrastructure, and commerce. In many ways, we move as one community.

Osborn, Rachael

From: Response@ocgov.com on behalf of OC Clerk of the Board <Response@ocgov.com>
Sent: Monday, October 25, 2021 10:51 AM
To: 2021 Orange County Redistricting
Subject: 2021 Redistricting Idea Form - ONLINE FORM SUBMISSION

Follow Up Flag: Follow up
Flag Status: Completed

Attention: This email originated from outside the County of Orange. Use caution when opening attachments or links.

Submitted on Mon, 10/25/2021 - 10:50

Submitted by: Anonymous

Submitted values are:

Name

Jeff Teal

My ideas/comments are as follows

I live in Rossmoor, an area that is not part of a city but shares a school district and many other community interests with the cities of Los Alamitos and Seal Beach. I would not want to have our communities separated by new Supervisor district boundaries such as in Proposals 1, 6 or 8. I think that the coastline is one of the most important things that make OC great and that Proposals 2&4 put too much coastline into one District. Proposal 3's boundary lines seem arbitrary especially those which separate District 2 from District 4 and the line that cuts Huntington Beach in half at the coast. I would prefer Proposals 5 or 7. Proposal 5 divides the coast most evenly between 3 Districts and pairs Rossmoor with our neighbors and with nearby Cypress, Westminster, Garden Grove and Fountain Valley, leaving most of those cities intact within one District.

Proposal 7 divides the coast into North county or South County. It puts our area in with Newport Beach, Costa Mesa, Huntington Beach and Buena Park but separate from Westminster, Garden Grove and Fountain Valley.

I know there are other considerations such as ethnicity and economic makeup of the new districts. That's beyond my analysis. But based on our community's and the neighboring communities' common interests, I believe Proposal 5 is best.

Osborn, Rachael

From: Response@ocgov.com on behalf of OC Clerk of the Board <Response@ocgov.com>
Sent: Sunday, October 24, 2021 3:24 PM
To: 2021 Orange County Redistricting
Subject: 2021 Redistricting Idea Form - ONLINE FORM SUBMISSION

Follow Up Flag: Follow up
Flag Status: Completed

Attention: This email originated from outside the County of Orange. Use caution when opening attachments or links.

Submitted on Sun, 10/24/2021 - 15:23

Submitted by: Anonymous

Submitted values are:

Name

Bobbi Walsh

Organization

none

Phone Number

[5627143777](tel:5627143777)

Email

bobbi.usd@aol.com

City/County

Los Alamitos

My ideas/comments are as follows

I implore you to keep Rossmoor with Orange County. I have affiliations with Los Alamitos and Seal Beach and do not feel an alliance with Long Beach is beneficial. We purchased our home in Orange County and want to remain part of Orange County/Los Alamitos area. Thank you.

Osborn, Rachael

From: Kelli Bourne <kellibourne@hotmail.com>
Sent: Sunday, October 24, 2021 2:46 PM
To: 2021 Orange County Redistricting
Subject: Support PRA's Supervisorial Map

Follow Up Flag: Follow up
Flag Status: Completed

Attention: This email originated from outside the County of Orange. Use caution when opening attachments or links.

Dear OC Board of Supervisors,

Thank you for taking the time to read this important message.

My name is Kelli Bourne and I am a resident of Laguna Niguel, Orange County, California. I support the OC People's Redistricting Alliance (PRA) Supervisorial map. This map prioritizes communities that have been historically marginalized, corrects the problems with the current configuration, and complies with the legal requirements of the Voting Rights Act and Fair Maps Act.

The current map configuration has disenfranchised communities of color by prioritizing the interests of one political party. This is not ok and it is time for change.

The OC PRA map has made communities of interest its top priority when drawing lines, considering the important testimonies of residents from communities that have been harmed by the current configuration.

The board needs to correct the significant legal problems with the current map configuration. I urge you to adopt the OC People's Redistricting Alliance map.

Thank you,
Kelli Bourne
Resident of Laguna Niguel

Osborn, Rachael

From: zombie4me2 <zombie4me2@aol.com>
Sent: Sunday, October 24, 2021 11:20 AM
To: 2021 Orange County Redistricting
Subject: No on redistricting rossmoor to la county

Follow Up Flag: Follow up
Flag Status: Completed

Attention: This email originated from outside the County of Orange. Use caution when opening attachments or links.

I have lived in seal beach most of my life and recently purchased a home in rossmoor. I do not want our home to be rezoned to la County, nor to I want my children's school to be rezoned.

Sincerely,
Kim Garthwaite

Sent via the Samsung Galaxy S9+, an AT&T 5G Evolution capable smartphone

Osborn, Rachael

From: Carlos <slacktivism@carlosrendon.me>
Sent: Saturday, October 23, 2021 11:53 AM
To: 2021 Orange County Redistricting
Subject: Redistricting comment

Follow Up Flag: Follow up
Flag Status: Completed

Attention: This email originated from outside the County of Orange. Use caution when opening attachments or links.

My name is Carlos Rendon and I am a resident of Mission Viejo. I support the OC People's Redistricting Alliance Supervisorial map. This map prioritizes communities that have been historically marginalized, corrects the problems with the current configuration, and complies with the legal requirements of the Voting Rights Act and Fair Maps Act. The current map configuration has disenfranchised communities of color by prioritizing the interests of one political party.

The OC PRA map has made communities of interest its top priority when drawing lines, considering the important testimonies of residents from communities that have been harmed by the current configuration.

The board needs to correct the significant legal problems with the current map configuration. I urge you to adopt the OC People's Redistricting Alliance map.

Sincerely,
Carlos Rendon

Osborn, Rachael

From: Lisa Del Sesto <lisadelsesto@gmail.com>
Sent: Thursday, October 21, 2021 5:44 PM
To: 2021 Orange County Redistricting
Subject: I Support the OC PRA Map

Follow Up Flag: Follow up
Flag Status: Completed

Attention: This email originated from outside the County of Orange. Use caution when opening attachments or links.

My name is Lisa Del Sesto and I am a resident of Cypress. I'm writing to support the OC People's Redistricting Alliance map. As the current map configuration stands, communities of color are disenfranchised because of the prioritization of the interests of one political party. Whereas the OC PRA map prioritizes communities that have been historically marginalized, corrects the problems with the current map configuration, and complies with the legal requirements of the Voting Rights Act and Fair Maps Act. The OC PRA map has made communities of interest its top priority when drawing lines. Including consideration of the important testimonies of residents from communities that have been harmed by the current map. The Board needs to correct the significant legal problems with the current map configuration, so I urge you to adopt the OC People's Redistricting Alliance map.

Lisa Del Sesto
lisadelsesto@gmail.com

Osborn, Rachael

From: Larry White <larryw7@me.com>
Sent: Thursday, October 21, 2021 1:06 PM
To: 2021 Orange County Redistricting
Subject: I Support the OC PRA Map

Follow Up Flag: Follow up
Flag Status: Completed

Attention: This email originated from outside the County of Orange. Use caution when opening attachments or links.

My name is Larry White and I am a resident of Dana Point. I'm writing to support the OC People's Redistricting Alliance map. As the current map configuration stands, communities of color are disenfranchised because of the prioritization of the interests of one political party. Whereas the OC PRA map prioritizes communities that have been historically marginalized, corrects the problems with the current map configuration, and complies with the legal requirements of the Voting Rights Act and Fair Maps Act. The OC PRA map has made communities of interest its top priority when drawing lines. Including consideration of the important testimonies of residents from communities that have been harmed by the current map. The Board needs to correct the significant legal problems with the current map configuration, so I urge you to adopt the OC People's Redistricting Alliance map.

Sent from my iPhone
Larry White
714.609.1853

Osborn, Rachael

From: Rebecca Sanchez <yayrebecca.sanchez@yahoo.com>
Sent: Thursday, October 21, 2021 7:32 AM
To: 2021 Orange County Redistricting
Subject: I Support the OC PRA Map

Follow Up Flag: Follow up
Flag Status: Completed

Attention: This email originated from outside the County of Orange. Use caution when opening attachments or links.

My name is _Rebecca Sanchez__ and I am a resident of __Aliso Viejo. I'm writing to support the OC People's Redistricting Alliance map. As the current map configuration stands, communities of color are disenfranchised because of the prioritization of the interests of one political party. Whereas the OC PRA map prioritizes communities that have been historically marginalized, corrects the problems with the current map configuration, and complies with the legal requirements of the Voting Rights Act and Fair Maps Act. The OC PRA map has made communities of interest its top priority when drawing lines. Including consideration of the important testimonies of residents from communities that have been harmed by the current map. The Board needs to correct the significant legal problems with the current map configuration, so I urge you to adopt the OC People's Redistricting Alliance map.

Sent from my iPhone

Osborn, Rachael

From: Roxana Kraus <kraus.roxana@yahoo.com>
Sent: Wednesday, October 20, 2021 9:28 PM
To: 2021 Orange County Redistricting
Subject: I Support the OC PRA Map

Follow Up Flag: Follow up
Flag Status: Completed

Attention: This email originated from outside the County of Orange. Use caution when opening attachments or links.

My name is Roxana Kraus and I am a resident of Huntington Beach. I'm writing to support the OC People's Redistricting Alliance map. As the current map configuration stands, communities of color are disenfranchised because of the prioritization of the interests of one political party. Whereas the OC PRA map prioritizes communities that have been historically marginalized, corrects the problems with the current map configuration, and complies with the legal requirements of the Voting Rights Act and Fair Maps Act. The OC PRA map has made communities of interest its top priority when drawing lines. Including consideration of the important testimonies of residents from communities that have been harmed by the current map. The Board needs to correct the significant legal problems with the current map configuration, so I urge you to adopt the OC People's Redistricting Alliance map.

Respectfully,
Roxana Kraus

Osborn, Rachael

From: Kamran Khan <krkhan786@gmail.com>
Sent: Wednesday, October 20, 2021 8:00 PM
To: 2021 Orange County Redistricting
Subject: I Support the OC PRA Map

Follow Up Flag: Follow up
Flag Status: Completed

Attention: This email originated from outside the County of Orange. Use caution when opening attachments or links.

My name is Kamran Khan. I am a resident of and business owner in Lake Forest. I'm writing to support the OC People's Redistricting Alliance map. As the current map configuration stands, communities of color are disenfranchised because of the prioritization of the interests of one political party. Whereas the OC PRA map prioritizes communities that have been historically marginalized, corrects the problems with the current map configuration, and complies with the legal requirements of the Voting Rights Act and Fair Maps Act. The OC PRA map has made communities of interest its top priority when drawing lines. Including consideration of the important testimonies of residents from communities that have been harmed by the current map. The Board needs to correct the significant legal problems with the current map configuration, so I urge you to adopt the OC People's Redistricting Alliance map.

Osborn, Rachael

From: Traci Cole <tracicole@yahoo.com>
Sent: Wednesday, October 20, 2021 7:47 PM
To: 2021 Orange County Redistricting
Subject: Do the right thing

Follow Up Flag: Follow up
Flag Status: Completed

Attention: This email originated from outside the County of Orange. Use caution when opening attachments or links.

My name is Traci Cole and I am a resident of San Juan Capistrano, Orange County, CA. I support the OC People's Redistricting Alliance Supervisorial map. This map prioritizes communities that have been historically marginalized, corrects the problems with the current configuration, and complies with the legal requirements of the Voting Rights Act and Fair Maps Act. The current map configuration has disenfranchised communities of color by prioritizing the interests of one political party.

The OC PRA map has made communities of interest its top priority when drawing lines, considering the important testimonies of residents from communities that have been harmed by the current configuration.

The board needs to correct the significant legal problems with the current map configuration. I urge you to adopt the OC People's Redistricting Alliance map.

--

Traci Cole
216 502 1990

[Sent from Yahoo Mail for iPhone](#)

Osborn, Rachael

From: Diane Bucka <dbucka@yahoo.com>
Sent: Wednesday, October 20, 2021 6:35 PM
To: 2021 Orange County Redistricting
Subject: We Need Fair Maps to Ensure Fair Voting!

Follow Up Flag: Follow up
Flag Status: Completed

Attention: This email originated from outside the County of Orange. Use caution when opening attachments or links.

My name is Diane Bucka and I am a resident of Irvine, CA. I support the OC People's Redistricting Alliance Supervisorial map. This map prioritizes communities that have been historically marginalized, corrects the problems with the current configuration, and complies with the legal requirements of the Voting Rights Act and Fair Maps Act. The current map configuration has disenfranchised communities of color by prioritizing the interests of one political party.

The OC PRA map has made communities of interest its top priority when drawing lines, considering the important testimonies of residents from communities that have been harmed by the current configuration.

The board needs to correct the significant legal problems with the current map configuration. I urge you to adopt the OC People's Redistricting Alliance map.
Thank You,
Diane Bucka

Osborn, Rachael

From: Keith Dunnell <kadunnell@gmail.com>
Sent: Wednesday, October 20, 2021 5:46 PM
To: 2021 Orange County Redistricting
Subject: Orange County Redistricting

Follow Up Flag: Follow up
Flag Status: Completed

Attention: This email originated from outside the County of Orange. Use caution when opening attachments or links.

My name is Keith Dunnell and I am a resident of San Juan Capistrano, Orange County, CA. I support the OC People's Redistricting Alliance Supervisorial map. This map prioritizes communities that have been historically marginalized, corrects the problems with the current configuration, and complies with the legal requirements of the Voting Rights Act and Fair Maps Act. The current map configuration has disenfranchised communities of color by prioritizing the interests of one political party.

The OC PRA map has made communities of interest its top priority when drawing lines, considering the important testimonies of residents from communities that have been harmed by the current configuration.

The board needs to correct the significant legal problems with the current map configuration. I urge you to adopt the OC People's Redistricting Alliance map.

--

Keith A. Dunnell
626.318.0582 mobile
kadunnell@gmail.com

Osborn, Rachael

From: Sergio Sepulveda <srg326@gmail.com>
Sent: Wednesday, October 20, 2021 5:28 PM
To: 2021 Orange County Redistricting
Subject: I Support the OC PRA Map

Follow Up Flag: Follow up
Flag Status: Completed

Attention: This email originated from outside the County of Orange. Use caution when opening attachments or links.

My name is ____ and I am a resident of _____. I'm writing to support the OC People's Redistricting Alliance map. As the current map configuration stands, communities of color are disenfranchised because of the prioritization of the interests of one political party. Whereas the OC PRA map prioritizes communities that have been historically marginalized, corrects the problems with the current map configuration, and complies with the legal requirements of the Voting Rights Act and Fair Maps Act. The OC PRA map has made communities of interest its top priority when drawing lines. Including consideration of the important testimonies of residents from communities that have been harmed by the current map. The Board needs to correct the significant legal problems with the current map configuration, so I urge you to adopt the OC People's Redistricting Alliance map.

Osborn, Rachael

From: Nicole Quibodeaux <quibodeaux@gmail.com>
Sent: Wednesday, October 20, 2021 4:32 PM
To: 2021 Orange County Redistricting
Subject: Support the People's Redistricting Alliance map

Follow Up Flag: Follow up
Flag Status: Completed

Attention: This email originated from outside the County of Orange. Use caution when opening attachments or links.

My name is Nicole Quibodeaux. I have been a resident of Orange County for 30 years and currently reside in Lake Forest.

I am writing to you today to let you know I support the OC People's Redistricting Alliance Supervisorial map.

This map prioritizes communities that have been historically marginalized, corrects the problems with the current configuration, and complies with the legal requirements of the Voting Rights Act and Fair Maps Act. The current map configuration has disenfranchised communities of color by prioritizing the interests of one political party.

The OC PRA map has made communities of interest its top priority when drawing lines, considering the important testimonies of residents from communities that have been harmed by the current configuration.

The board needs to correct the significant legal problems with the current map configuration. I urge you to adopt the OC People's Redistricting Alliance map.

Thank you,
Nicole Quibodeaux (she/her)

Osborn, Rachael

From: L. Booker <lbc1204@sbcglobal.net>
Sent: Wednesday, October 20, 2021 3:49 PM
To: 2021 Orange County Redistricting
Subject: I Support the OC PRA Map

Follow Up Flag: Follow up
Flag Status: Completed

Attention: This email originated from outside the County of Orange. Use caution when opening attachments or links.

My name is Libbie Booker and I am a resident of Tustin, CA. I'm writing to support the OC People's Redistricting Alliance map. As the current map configuration stands, communities of color are disenfranchised because of the prioritization of the interests of one political party. Whereas the OC PRA map prioritizes communities that have been historically marginalized, corrects the problems with the current map configuration, and complies with the legal requirements of the Voting Rights Act and Fair Maps Act. The OC PRA map has made communities of interest its top priority when drawing lines. Including consideration of the important testimonies of residents from communities that have been harmed by the current map. The Board needs to correct the significant legal problems with the current map configuration, so I urge you to adopt the OC People's Redistricting Alliance map.

Thank you.

Sincerely,

Libbie Booker

Sent from my iPhone

Osborn, Rachael

From: Lindsey Guendjoian <lguendjo@gmail.com>
Sent: Wednesday, October 20, 2021 3:33 PM
To: 2021 Orange County Redistricting
Subject: I Support the OC PRA Map

Follow Up Flag: Follow up
Flag Status: Completed

Attention: This email originated from outside the County of Orange. Use caution when opening attachments or links.

My name is Lindsey and I am a resident of Costa Mesa . I'm writing to support the OC People's Redistricting Alliance map. As the current map configuration stands, communities of color are disenfranchised because of the prioritization of the interests of one political party. Whereas the OC PRA map prioritizes communities that have been historically marginalized, corrects the problems with the current map configuration, and complies with the legal requirements of the Voting Rights Act and Fair Maps Act. The OC PRA map has made communities of interest its top priority when drawing lines. Including consideration of the important testimonies of residents from communities that have been harmed by the current map. The Board needs to correct the significant legal problems with the current map configuration, so I urge you to adopt the OC People's Redistricting Alliance map.

Lindsey
Sent from my iPhone

Osborn, Rachael

From: Kristi Crea <kristi.crea@me.com>
Sent: Wednesday, October 20, 2021 3:33 PM
To: 2021 Orange County Redistricting
Subject: I Support the OC PRA Map

Follow Up Flag: Follow up
Flag Status: Completed

Attention: This email originated from outside the County of Orange. Use caution when opening attachments or links.

My name is Kristi Crea and I am a resident of Irvine. I'm writing to support the OC People's Redistricting Alliance map. As the current map configuration stands, communities of color are disenfranchised because of the prioritization of the interests of one political party. Whereas the OC PRA map prioritizes communities that have been historically marginalized, corrects the problems with the current map configuration, and complies with the legal requirements of the Voting Rights Act and Fair Maps Act. The OC PRA map has made communities of interest its top priority when drawing lines. Including consideration of the important testimonies of residents from communities that have been harmed by the current map. The Board needs to correct the significant legal problems with the current map configuration, so I urge you to adopt the OC People's Redistricting Alliance map.

Sent from my iPhone

Osborn, Rachael

From: Christina Ruiz <ruizcm118@gmail.com>
Sent: Wednesday, October 20, 2021 3:24 PM
To: 2021 Orange County Redistricting
Subject: I Support the OC PRA Map

Follow Up Flag: Follow up
Flag Status: Completed

Attention: This email originated from outside the County of Orange. Use caution when opening attachments or links.

Hello,

My name is Christina and I am a resident of Santa Ana. I'm writing to support the OC People's Redistricting Alliance map. As the current map configuration stands, communities of color are disenfranchised because of the prioritization of the interests of one political party. Whereas the OC PRA map prioritizes communities that have been historically marginalized, corrects the problems with the current map configuration, and complies with the legal requirements of the Voting Rights Act and Fair Maps Act. The OC PRA map has made communities of interest its top priority when drawing lines. Including consideration of the important testimonies of residents from communities that have been harmed by the current map. The Board needs to correct the significant legal problems with the current map configuration, so I urge you to adopt the OC People's Redistricting Alliance map.

Regards,

Christina Ruiz

--

Christina Ruiz
pronouns: she/her/hers
714-742-5118 cell

Osborn, Rachael

From: Heather McNeil <heather.r.mcneil@gmail.com>
Sent: Wednesday, October 20, 2021 3:24 PM
To: 2021 Orange County Redistricting
Subject: I Support the OC PRA Map

Follow Up Flag: Follow up
Flag Status: Completed

Attention: This email originated from outside the County of Orange. Use caution when opening attachments or links.

My name is Heather McNeil and I am a Mission Viejo resident. I'm writing to support the OC People's Redistricting Alliance map. As the current map configuration stands, communities of color are disenfranchised because of the prioritization of the interests of one political party. Whereas the OC PRA map prioritizes communities that have been historically marginalized, corrects the problems with the current map configuration, and complies with the legal requirements of the Voting Rights Act and Fair Maps Act. The OC PRA map has made communities of interest its top priority when drawing lines. Including consideration of the important testimonies of residents from communities that have been harmed by the current map. The Board needs to correct the significant legal problems with the current map configuration, so I urge you to adopt the OC People's Redistricting Alliance map.

Thank you,

Heather McNeil
27112 Cordero Lane
Mission Viejo, CA 92691

714-913-5646

Osborn, Rachael

From: Michael Yu <micaheldotu@gmail.com>
Sent: Wednesday, October 20, 2021 3:23 PM
To: 2021 Orange County Redistricting
Subject: I Support the OC PRA Map

Follow Up Flag: Follow up
Flag Status: Completed

Attention: This email originated from outside the County of Orange. Use caution when opening attachments or links.

My name is Michael Yu and I am a resident of Irvine.

I'm writing to support the OC People's Redistricting Alliance map. As the current map configuration stands, communities of color are disenfranchised because of the prioritization of the interests of one political party. Whereas the OC PRA map prioritizes communities that have been historically marginalized, corrects the problems with the current map configuration, and complies with the legal requirements of the Voting Rights Act and Fair Maps Act.

The OC PRA map has made communities of interest its top priority when drawing lines. Including consideration of the important testimonies of residents from communities that have been harmed by the current map.

The Board needs to correct the significant legal problems with the current map configuration, so I urge you to adopt the OC People's Redistricting Alliance map.

Osborn, Rachael

From: Jamie Corpuz-Becker <jamieleecorpuz@gmail.com>
Sent: Wednesday, October 20, 2021 3:18 PM
To: 2021 Orange County Redistricting
Subject: Income disparity needs to be addressed, start with redistricting

Follow Up Flag: Follow up
Flag Status: Completed

Attention: This email originated from outside the County of Orange. Use caution when opening attachments or links.

My name is Jamie and I am a resident of Irvine. I support the OC People's Redistricting Alliance Supervisorial map. This map prioritizes communities that have been historically marginalized, corrects the problems with the current configuration, and complies with the legal requirements of the Voting Rights Act and Fair Maps Act. The current map configuration has disenfranchised communities of color by prioritizing the interests of one political party.

The OC PRA map has made communities of interest its top priority when drawing lines, considering the important testimonies of residents from communities that have been harmed by the current configuration.

The board needs to correct the significant legal problems with the current map configuration. I urge you to adopt the OC People's Redistricting Alliance map.

Thank you!

Osborn, Rachael

From: Nettie Bryan <nettie-ellen@hotmail.com>
Sent: Wednesday, October 20, 2021 2:53 PM
To: 2021 Orange County Redistricting
Subject: I Support the OC PRA Map

Follow Up Flag: Follow up
Flag Status: Completed

Attention: This email originated from outside the County of Orange. Use caution when opening attachments or links.

My name is Nettie and I am a resident of Cypress. I'm writing to support the OC People's Redistricting Alliance map. As the current map configuration stands, communities of color are disenfranchised because of the prioritization of the interests of one political party. Whereas the OC PRA map prioritizes communities that have been historically marginalized, corrects the problems with the current map configuration, and complies with the legal requirements of the Voting Rights Act and Fair Maps Act. The OC PRA map has made communities of interest its top priority when drawing lines. Including consideration of the important testimonies of residents from communities that have been harmed by the current map. The Board needs to correct the significant legal problems with the current map configuration, so I urge you to adopt the OC People's Redistricting Alliance map.

Osborn, Rachael

From: Coco Randolph <cocorandolph@gmail.com>
Sent: Wednesday, October 20, 2021 2:52 PM
To: 2021 Orange County Redistricting
Subject: I Support the OC PRA Map

Follow Up Flag: Follow up
Flag Status: Completed

Attention: This email originated from outside the County of Orange. Use caution when opening attachments or links.

My name is Courtney and I am a resident of Irvine. I'm writing to support the OC People's Redistricting Alliance map.

As the current map configuration stands, communities of color are disenfranchised because of the prioritization of the interests of one political party. Whereas the OC PRA map prioritizes communities that have been historically marginalized, corrects the problems with the current map configuration, and complies with the legal requirements of the Voting Rights Act and Fair Maps Act. The OC PRA map has made communities of interest its top priority when drawing lines. Including consideration of the important testimonies of residents from communities that have been harmed by the current map.

The Board needs to correct the significant legal problems with the current map configuration, so I urge you to adopt the OC People's Redistricting Alliance map.

C o u r t n e y R a n d o l p h

Osborn, Rachael

From: morgan kays <morgankays@yahoo.com>
Sent: Wednesday, October 20, 2021 10:42 AM
To: 2021 Orange County Redistricting
Subject: I Support the OC PRA Map

Follow Up Flag: Follow up
Flag Status: Completed

Attention: This email originated from outside the County of Orange. Use caution when opening attachments or links.

My name is Morgan Kay's and I am a resident of Anaheim. I'm writing to support the OC People's Redistricting Alliance map. As the current map configuration stands, communities of color are disenfranchised because of the prioritization of the interests of one political party. Whereas the OC PRA map prioritizes communities that have been historically marginalized, corrects the problems with the current map configuration, and complies with the legal requirements of the Voting Rights Act and Fair Maps Act. The OC PRA map has made communities of interest its top priority when drawing lines. Including consideration of the important testimonies of residents from communities that have been harmed by the current map. The Board needs to correct the significant legal problems with the current map configuration, so I urge you to adopt the OC People's Redistricting Alliance map.

Thank you,
Morgan

Sent from my iPhone

Osborn, Rachael

From: Patricia L Kruger <msspatkruger@aol.com>
Sent: Wednesday, October 20, 2021 10:28 AM
To: 2021 Orange County Redistricting
Subject: I Support the OC PRA Map

Follow Up Flag: Follow up
Flag Status: Completed

Attention: This email originated from outside the County of Orange. Use caution when opening attachments or links.

My name is Patricia Kruger and I am a resident of Seal Beach. I'm writing to support the OC People's Redistricting Alliance map. As the current map configuration stands, communities of color are disenfranchised because of the prioritization of the interests of one political party. Whereas the OC PRA map prioritizes communities that have been historically marginalized, corrects the problems with the current map configuration, and complies with the legal requirements of the Voting Rights Act and Fair Maps Act. The OC PRA map has made communities of interest its top priority when drawing lines. Including consideration of the important testimonies of residents from communities that have been harmed by the current map. The Board needs to correct the significant legal problems with the current map configuration, so I urge you to adopt the OC People's Redistricting Alliance map.

Osborn, Rachael

From: Vaidehi Bhardwaj <vaidehib.001@gmail.com>
Sent: Wednesday, October 20, 2021 7:40 AM
To: 2021 Orange County Redistricting
Subject: I Support the OC PRA Map

Follow Up Flag: Follow up
Flag Status: Completed

Attention: This email originated from outside the County of Orange. Use caution when opening attachments or links.

My name is Vaidehi Bhardwaj and I am a resident of Trabuco Canyon. I'm writing to support the OC People's Redistricting Alliance map. As the current map configuration stands, communities of color are disenfranchised because of the prioritization of the interests of one political party. Whereas the OC PRA map prioritizes communities that have been historically marginalized, corrects the problems with the current map configuration, and complies with the legal requirements of the Voting Rights Act and Fair Maps Act. The OC PRA map has made communities of interest its top priority when drawing lines. Including consideration of the important testimonies of residents from communities that have been harmed by the current map. The Board needs to correct the significant legal problems with the current map configuration, so I urge you to adopt the OC People's Redistricting Alliance map.

Regards,
Vaidehi

Osborn, Rachael

From: Lama Lane <lc.lane@yahoo.com>
Sent: Tuesday, October 19, 2021 5:13 PM
To: 2021 Orange County Redistricting
Subject: I Support the OC PRA Map

Follow Up Flag: Follow up
Flag Status: Completed

Attention: This email originated from outside the County of Orange. Use caution when opening attachments or links.

My name is Lama Lane and I am a resident of Santa Ana, CA. I'm writing to support the OC People's Redistricting Alliance map.

As the current map configuration stands, communities of color are disenfranchised because of the prioritization of the interests of one political party. Whereas the OC PRA map prioritizes communities that have been historically marginalized, corrects the problems with the current map configuration, and complies with the legal requirements of the Voting Rights Act and Fair Maps Act.

The OC PRA map has made communities of interest its top priority when drawing lines. Including consideration of the important testimonies of residents from communities that have been harmed by the current map.

The Board needs to correct the significant legal problems with the current map configuration, so I urge you to adopt the OC People's Redistricting Alliance map.

Sincerely yours,

Lama Lane
Resident of
Santa Ana, CA
County of Orange

[Sent from Yahoo Mail on Android](#)

Osborn, Rachael

From: Ernest Herrera <eherrera@MALDEF.org>
Sent: Friday, October 15, 2021 11:17 AM
To: 2021 Orange County Redistricting; Do, Andrew
Cc: Foley, Katrina; Wagner, Donald; Fourth District; Bartlett, Lisa
Subject: MALDEF's Letter to the Orange County Board of Supervisors Regarding Redistricting
Attachments: 2021.10.15 - MALDEF Ltr to Orange County - Board of Supervisors Redistricting.pdf

Follow Up Flag: Follow up
Flag Status: Completed

Attention: This email originated from outside the County of Orange. Use caution when opening attachments or links.

Dear Chairman Do, the County Executive Office, and the Redistricting Team:

I am sending MALDEF's letter regarding redistricting of the Orange County Board of Supervisors. Please see the attached and contact me with any questions. Thank you.

Ernest I. Herrera
Staff Attorney
Pronouns: he/him/his
Mexican American Legal Defense and Educational Fund
634 S. Spring Street - 11th Floor
Los Angeles, CA 90014
(213) 629-2512 Ext. 114
www.maldef.org
facebook.com/maldef
twitter.com/maldef

Osborn, Rachael

From: Sam Hoang <hoangsam551@gmail.com>
Sent: Friday, October 15, 2021 4:04 PM
To: 2021 Orange County Redistricting
Subject: Letter of Support for API Communities of Interest Map
Attachments: API COI OC.pdf

Follow Up Flag: Follow up
Flag Status: Completed

Attention: This email originated from outside the County of Orange. Use caution when opening attachments or links.

Hello,

Please see attached a letter from the Asian/Pacific Islanders Communities of Interest Orange County in support of API Communities of Interest plan submitted at 3:42pm on 10/15/2021.

Sincerely,

Sam Hoang

ASIAN/PACIFIC ISLANDERS COMMUNITIES OF INTEREST OF ORANGE COUNTY

October 15, 2021

Clerk of the Board
County of Orange
333 W. Santa Ana Blvd
Santa Ana, CA 92701

Key Community of Interest

Keep Little Saigon Communities of Westminster, Fountain Valley, Garden Grove & Midway City United in the Same District: Little Saigon is a vibrant cultural and economic hub for Orange County's Vietnamese-American community. This area extends from Westminster, Fountain Valley, Garden Grove and Midway City, providing a common safe space where Vietnamese-Americans can preserve our culture, history, language, food, medicine and small businesses. Any map that divides Vietnamese-Americans is subject to a potential legal challenge for violating both the Voting Rights Act and AB 849.

Dear Clerk of the Board,

On behalf of Asian & Pacific Islanders Communities of Interest of Orange County, we submit the attached map that provides fair representation for Orange County's diverse communities of interest.

We represent a coalition of the undersigned organizations and individuals within the Asian and Pacific Islanders Communities of Interest in Orange County and submit to the Orange County Board of Supervisors for consideration a redistricting proposal that fairly represents all Orange County communities. The population deviation of 3.93% between all 5 supervisorial districts presented by this map is within the 10% threshold acceptable within the legal standards of the Voting Rights Act.

As Orange County considers redistricting proposals, it is essential that County Supervisors adopt a map that appropriately respects Little Saigon areas of Garden Grove, Fountain Valley, Midway City, and Westminster as a united community of interest.

District 1 – This district meets the necessary requirement to **Keep Little Saigon United** by providing adequate representation for the Asian/Pacific Islander Community, which has deep historical and cultural roots in Orange County history, as well as to the immigrants who established themselves in Little Saigon and the Korean Business District.

District 2- This district will provide for the first time a Latino-majority supervisorial district in Orange County. The corridor from south Santa Ana to Anaheim shares many common cultural roots, as well as social needs. By making this district number 2, we will ensure that this Community of Interest will be able to select its representative in the first available election.

District 3 – The Foothill communities deserve a unified voice, which is well served to address common issues such as the toll roads and wildfire control.

District 4 – North Orange County, which borders Los Angeles County, shares many common interests, including cross-county commute and business. This district will allow for a common voice for this part of the county.


District 5 –Coastal communities have many common concerns, such as harbor patrol, beach erosion, Pacific Coast Highway traffic, the 73 Toll Road, John Wayne Airport flight patterns, etc. Historically, the Orange County coastal cities were originally part of one supervisorial district. The Amplify Energy oil spill that originated in Huntington Beach highlighted the common interest coastal cities in this district share. Having a unified voice will ensure a more effective management and response for the district's residents.

Thank you for the opportunity to submit our map for consideration.

Sincerely,


10/15/2021

Randy Anh Nguyen
Huy Truong, U.S. National Reserve Corps
13762 Cherry St. #4
Westminster CA 92683


10/15/2021

Au Dang
Royale Garden Association
10200 Bolsa Ave. #89
Westminster CA 92683

Huong Nguyen
Hand to Hand Relief Organization
9098 Bolsa Ave.
Westminster Ca 92683



Thanh Huong Nguyen
10/15/2021

**National Headquarters**

MALDEF Nonprofit Center
634 S. Spring Street, 12th Fl.
Los Angeles, CA 90014
TEL: 213.629.2512
Fax: 213.629.0266

Atlanta**Program Office**

500 West Lanier Avenue
Suite 908
Fayetteville, GA 30215
Tel: 678.559.1071
Fax: 678.559.1079

Chicago**Regional Office**

11 East Adams Street
Suite 700
Chicago, IL 60603
TEL: 312.427.0701
Fax: 312.427.0691

Los Angeles**Regional Office**

634 S. Spring Street,
11th Fl.
Los Angeles, CA 90014
TEL: 213.629.2512
Fax: 213.629.0266

Sacramento**Program Office**

1512 14th Street
Sacramento, CA 95814
Tel: 916.444.3031
Fax: 916.444.7207

San Antonio**Regional Office**

110 Broadway
Suite 300
San Antonio, TX 78205
TEL: 210.224.5476
Fax: 210.224.5382

Washington, D.C.**Regional Office**

1016 16th Street, NW
Suite 100
Washington, DC 20036
Tel: 202.293.2828

October 15, 2021

VIA EMAIL

Orange County Board of Supervisors
c/o County Executive Office
333 W. Santa Ana Blvd.
Santa Ana, CA 92701

2021 Redistricting Team
333 West Santa Ana Blvd., 3rd Floor
Santa Ana, CA 92701
Email: redistricting@ocgov.com

Re: Orange County Board of Supervisors Redistricting 2021

Dear Members of the Orange County Board of Supervisors, the Orange County Executive Office, and Members of the Orange County 2021 Redistricting Team:

On behalf of MALDEF (Mexican American Legal Defense and Educational Fund), I write to urge you to meet your obligations under the federal Voting Rights Act and to adopt a redistricting plan for the Orange County Board of Supervisors that includes a Latino-majority district.

Section 2 of the Voting Rights Act (VRA), 52 U.S.C. §10301, requires the Orange County Board of Supervisors to construct a plan that includes a supervisorial district in which Latinos constitute a majority of the citizen voting age population (CVAP). Federal law is clear that in determining compliance under Section 2 of the VRA, “CVAP is the appropriate measure to use in determining whether an additional effective majority-minority district can be created.” *Luna v. County of Kern*, 291 F.Supp.3d 1088, 1107 (E.D. Cal. 2018) (quoting *Cano v. Davis*, 211 F.Supp.2d 1208, 1233 (C.D. Cal. 2002)). In light of the history and current circumstances of Orange County, where a Latino-majority supervisorial district is possible, the redistricting plan must include such a district to comply with VRA section 2.

It is possible to draw a compact supervisorial district that includes Santa Ana, east Garden Grove, and central Anaheim, and that would have greater than 50% Latino CVAP. It is incumbent upon the County to provide Latino voters to elect their candidate of choice in such a supervisorial district.

Orange County Board of Supervisors
Orange County Executive Office and Redistricting Team

October 15, 2021
pg. 2

The Board of Supervisors should direct staff to construct a map with a VRA-compliant Latino-majority district in Orange County.

If you would like to discuss further, I am available at eherrera@maldef.org, or at (213) 629-2512, ext. 114. Thank you.

Sincerely,



Ernest I. Herrera
Staff Attorney
Los Angeles Regional Office
MALDEF

cc: Supervisor Andrew Do, First District, Andrew.Do@ocgov.com
Supervisor Katrina Foley, Second District, Katrina.Foley@ocgov.com
Supervisor Donald P. Wagner, Third District, Donald.Wagner@ocgov.com
Supervisor Doug Chaffee, Fourth District, Fourth.District@ocgov.com
Supervisor Lisa A. Bartlett, Fifth District, Lisa.Bartlett@ocgov.com

Osborn, Rachael

From: Daniel Ichinose <daniel@occivic.org>
Sent: Friday, October 15, 2021 5:23 PM
To: 2021 Orange County Redistricting
Cc: Jonathan Paik; Jazzmin Mercado
Subject: PRA 21 OCBOS plan submission
Attachments: PRA_21OCBOS_PLAN_211015.zip

Follow Up Flag: Follow up
Flag Status: Completed

Attention: This email originated from outside the County of Orange. Use caution when opening attachments or links.

Dear county redistricting staff,

In support of the public map submission (PRA 21 OCBOS PLAN 211015) sent on behalf of our Executive Director Jonathan Paik (jonathan@occivic.org) via the ESRI online tool a few minutes ago, I am attaching a compressed file (PRA_21OCBOS_PLAN_211015.zip) which includes a comprehensive PDF narrative and corresponding block equivalency file.

The comprehensive narrative provides a more detailed explanation of the plan and the rationale behind the districts our alliance submitted today. We hope that the narrative can be made available to the Board and any member of the public who would like to better understand the map. Might this be possible?

Please let us know if you have any questions or concerns.

Thanks so much for all your help throughout this process. We look forward to continuing to work with you as we all move toward the finish line!

Sincerely,

Dan Ichinose

--

Daniel Ichinose
 OCCET & OCCET Action
 Research Director



PEOPLE'S REDISTRICTING ALLIANCE

Public Map Submission

Orange County Board of Supervisors

Submitted on October 15, 2021

By the People's Redistricting Alliance (PRA)
with assistance from the Orange County Civic Engagement Table (OCCET)



This PRA Orange County Board of Supervisors plan was submitted to the Board and county redistricting staff via ESRI redistricting software as 'PRA 21 OCBOS PLAN 211015' and electronically to redistricting@ocgov.com as 'PRA_21OCBOS_PLAN_211015.zip', including a comprehensive PDF narrative, block equivalency file, and ESRI shapefile.

INTRODUCTION TO THE PEOPLE'S REDISTRICTING ALLIANCE

PRA Background and Principles

A multiracial coalition of community-based organizations (CBOs) and residents based in Orange County, the People's Redistricting Alliance (PRA) was established in early 2021 to ensure a community voice in statewide and local redistricting processes. Centering the lived experiences and needs of low-income communities of color and working families, the PRA has pursued maps and other redistricting outcomes that maximize opportunities for year-round organizing and policy advocacy, working toward an Orange County that treats everyone equitably and with justice. Organizing across diverse communities builds bridges, better mitigates potential conflict between groups, and deepens the foundation for collective work over the next decade.

PRA Structure and Participants

The PRA includes 16 members that reflect Orange County's diverse communities, including:

- ACLU of Southern California
- AHRI Center
- Arab American Civic Council
- California Healthy Nail Salon Collaborative
- Coalition for Humane Immigrant Rights (CHIRLA)
- Coalition on American Islamic Relations (CAIR-LA)
- Latino Health Access
- Orange County Asian and Pacific Islander Community Alliance (OCAPICA)
- Orange County Congregation Community Organization (OCCCO)
- Orange County Communities Organized for Responsible Development (OCCORD)
- Orange County Environmental Justice (OCEJ)
- Orange County Voter Information Project (OCVIP)
- Pacific Islander Health Partnership
- Resilience Orange County
- South Asian Network (SAN)
- VietRISE

Each member brings a deep connection and engagement with communities on the ground countywide, with a particular focus on community organizing and integrated voter engagement in the cities of Anaheim, Buena Park, Fullerton, Garden Grove, Irvine, Santa Ana, Stanton, and Westminster.

PRA Process and Activities

Since February of this year, PRA members have met every two to four weeks to advance their collective work. To promote greater community engagement in redistricting, OCCET and PRA members have (1) educated CBOs and residents about redistricting, its impact on their political

representation, and how the processes established by decision makers work, (2) created a space through which they identify and articulate communities of interest (COI) important to them, (3) mobilized both to participate in California Citizens Redistricting Commission (CCRC), Orange County Board of Supervisors, and other public hearings, and (4) worked closely with them to create congressional, state, and local legislative redistricting maps that best address the needs of low-income communities of color and working families.

Members shared their communities of interest and other priorities during public workshops and meetings held between August 3 and August 12 and provided a written transcript supporting their participation. A summary of these communities of interest is provided in the following section and their testimony is included in Appendix A of this submission.

This submission represents the culmination of over seven months of community engagement.

OCCET Background and Role

The Orange County Civic Engagement Table (OCCET) coordinates PRA activities. OCCET is a progressive AAPI-Latinx-labor-environmental justice alliance that seeks to build progressive transformation of the region. The eight organizations that anchor OCCET serve the emerging majority of the county; low-income immigrant Latinx and Asian American communities that work across issues of immigrant, economic, and racial justice across the county.

Through this innovative partnership, OCCET is committed to increasing the quality, scale and effectiveness of civic participation in communities of color and among low-income populations in Orange County.

Questions regarding this submission should be directed to Daniel Ichinose, Research Director at OCCET, via email at daniel@occivic.org.

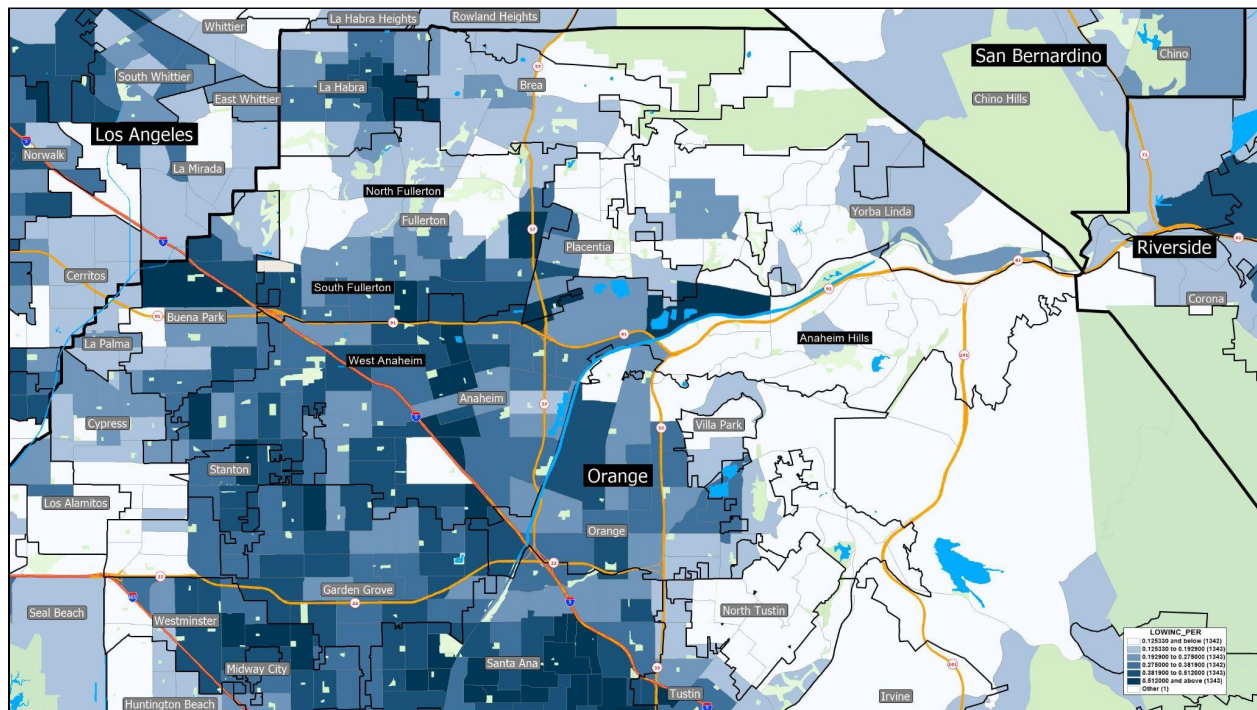
SUMMARY OF PRA COMMUNITIES OF INTEREST

Through coalition meetings on April 31, May 11, and June 9 and a series of one-on-ones, PRA member organizations worked to identify communities of interest and their alignment across cities in Orange County. These communities of interest have been shared with the Board and county redistricting staff in testimony provided during public workshops and meetings between August 3 and August 12 of this year and are included in Appendix A of this document. They include the following:

South Fullerton and West Anaheim

Summary: Two of Orange County's largest cities, both Fullerton and Anaheim are socially and economically diverse with clear divisions between those with considerable needs and more affluent residents. In Figure B, Census Bureau data on low-income population show dramatic differences within each city. In Fullerton, the lower income area of south Fullerton and the higher income north Fullerton are roughly divided by Chapman Ave. In Anaheim, the lower income west Anaheim and the higher income Anaheim Hills are roughly divided by the 55 Freeway. Low-income residents in south Fullerton and west Anaheim share common challenges, including environmental justice concerns and access to affordable housing.

Figure B: Low-Income Population by Census Tract, Northern Orange County California.



Source: United States Census Bureau, 2019 American Community Survey 5-Year Estimates, Table C17002.

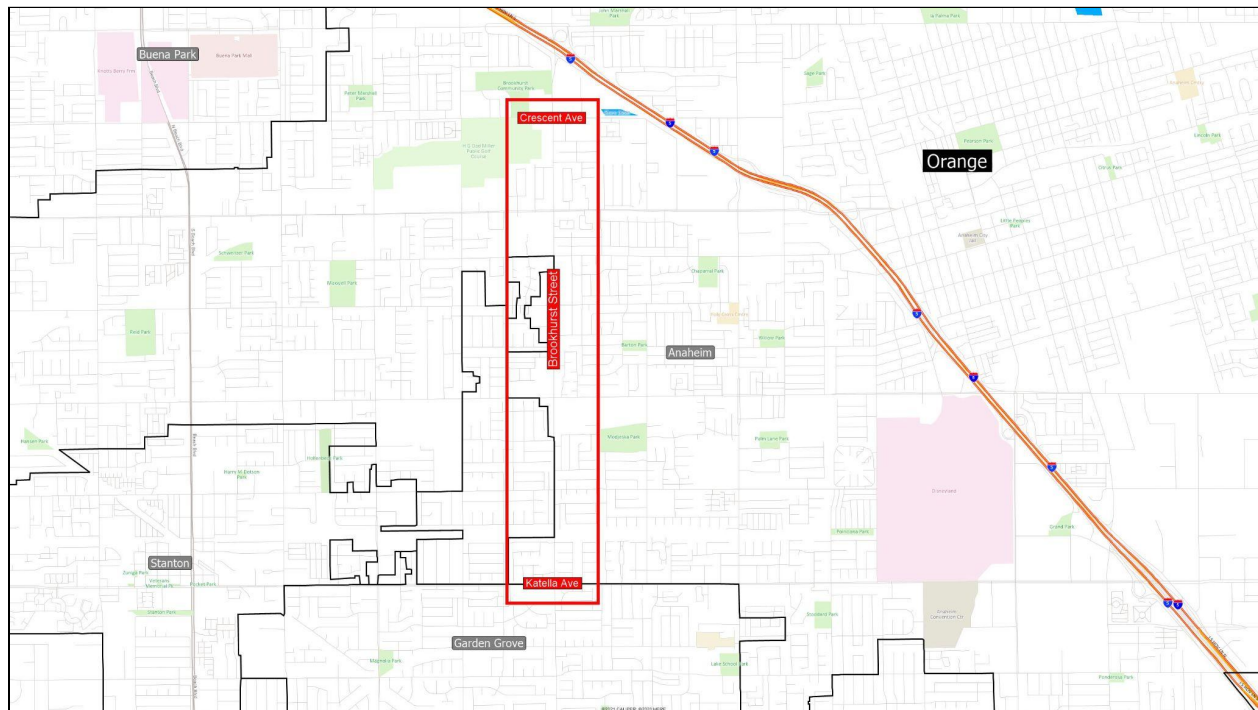
Guidance: South Fullerton (south of Chapman Ave) and west Anaheim (west of the 55 Freeway) should be drawn together and apart from more affluent communities in Yorba Linda and the Anaheim Hills.

Detailed Testimony: Karen Alvarado (Orange County Congregation Community Organization), Kayla Asato (Orange County Environmental Justice), and Susan Cheng (AHRI for Justice).

Little Arabia (Anaheim)

Summary: Located in west Anaheim on Brookhurst Street between Crescent Avenue and Katella Avenue (see Figure C below), Little Arabia is home to more than one hundred small businesses serving Orange County's diverse Arab, Middle Eastern, Muslim, and South Asian (AMEMSA) community, including ethnic grocery stores, restaurants, cafes, hair salons, halal butcher shops, and professional services. It is also home to important religious institutions such as the West Coast Islamic Society and nonprofit and social service organizations that serve the community.

Figure C: Little Arabia, Anaheim California.



Source: Caliper Corporation, Maptitude for Redistricting.

Guidance: Keep the area of Brookhurst Street between Crescent Ave and Katella Ave whole in a Supervisorial district.

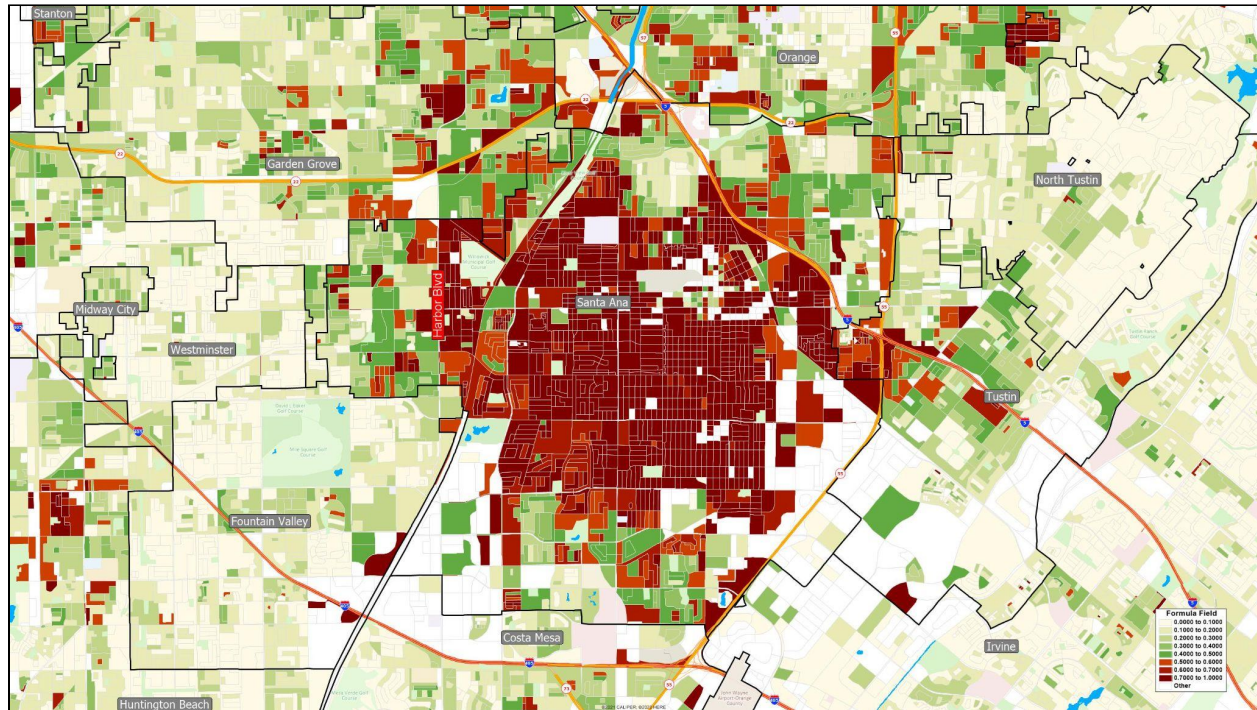
Detailed Testimony: Rashad Al-Dabbagh (Arab American Civic Council).

Santa Ana

Summary: Santa Ana is home to the largest and most established Latinx community in Orange County. Making up nearly 77% of the city's total population, Santa Ana's Latinx population

(238,000) ranks fifth in size among cities statewide behind only Los Angeles, San Diego, San Jose, and Fresno. With many low-income residents and mixed immigration status families, the Latinx community of interest faces numerous challenges, including immigration enforcement and access to affordable housing. Latinx residents in Santa Ana share these challenges with those in east Garden Grove, west Anaheim, and parts of adjacent cities like Orange and Tustin.

Figure D: Latinx Citizen Voting-Age Population, Santa Ana California.



Source: United States Census Bureau, 2019 American Community Survey 5-Year Estimates, Special Tabulation, disaggregated to the census block level by the Statewide Database, U.C. Berkeley.

Guidance: Latinx communities in and around Santa Ana (including Santa Ana, east Garden Grove, and parts of west Anaheim, Orange, and Tustin) should serve as the foundation of a federal Voting Rights Act-compliant Supervisorial district.

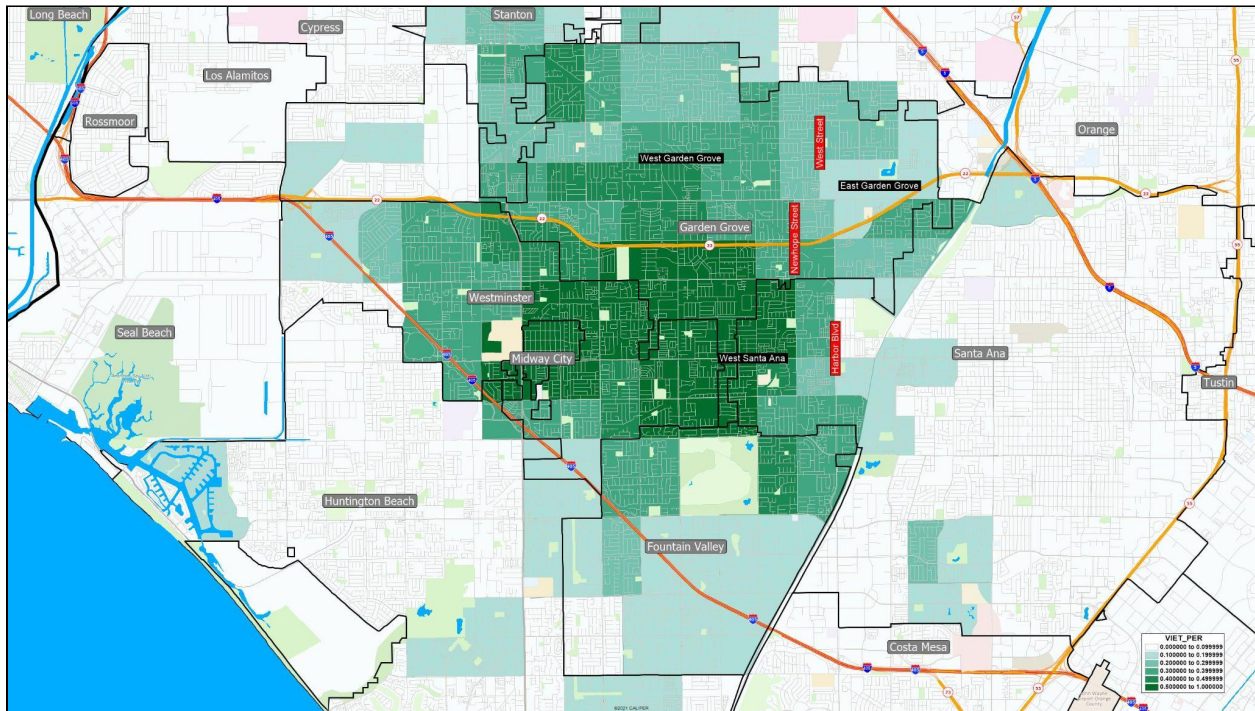
Detailed Testimony: Sarai Arpero (Santa Ana Resident), Kayla Asato (Orange County Environmental Justice), Ana Charco (Latino Health Access), Taavi Kaskla (United Domestic Workers), Adela Montanez (Santa Ana Resident), Laura Pantoja (Santa Ana Resident), Otniel Pavia (Orange County Voter Information Project), Araceli Robles (Santa Ana Resident), Dulce Saavedra (Resilience Orange County), and Maria Victoria (Santa Ana Resident).

Garden Grove and Westminster

Summary: Garden Grove and Westminster are home to some of the nation's largest Vietnamese American communities, as well as notable Korean American and Native Hawaiian and Pacific Islander (NHPI) populations. Established after the fall of Saigon in 1975, Little Saigon has grown to encompass large portions of both cities and Fountain Valley. In Garden

Grove, the Vietnamese American community is primarily located west of West Street between Orangewood Ave and Garden Grove Blvd and west of Newhope Street between W Garden Grove Blvd and Westminster Blvd (see Figure E below). Communities in these parts of Orange County are disproportionately low-income and share both common refugee experiences and the need for social services and affordable housing.

Figure E: Vietnamese American Population by Census Tract, Garden Grove and Westminster California.



Source: United States Census Bureau, 2019 American Community Survey 5-Year Estimates, Table B02018.

Guidance: West Garden Grove (west of West Street between Orangewood Ave and Garden Grove Blvd and west of Newhope Street between W Garden Grove Blvd and Westminster Blvd) and Westminster should be drawn together, including north Fountain Valley (north of the 405 Freeway) if possible.

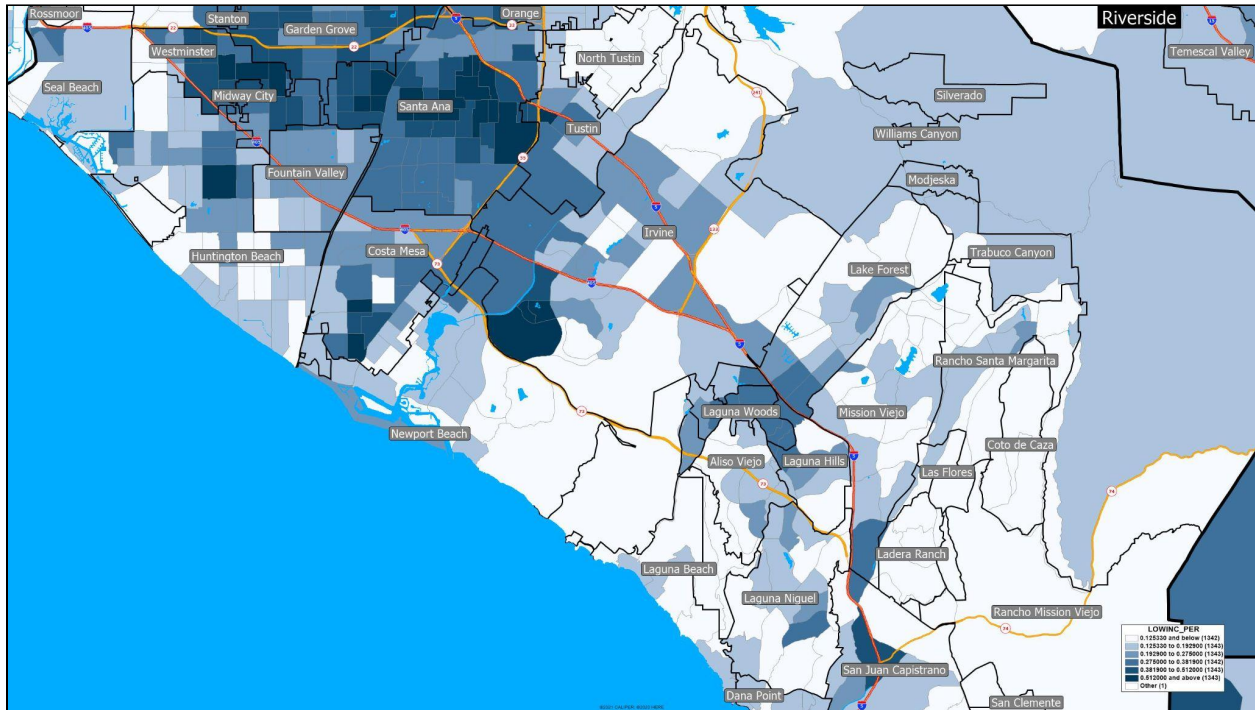
Detailed Testimony: Taavi Kaskla (United Domestic Workers), Charlene Kazner (Pacific Islander Health Partnership), Caroline Nguyen (California Healthy Nail Salon Collaborative), and Vincent Tran (VietRISE).

Irvine and Costa Mesa

Summary: Irvine is one of the fastest growing cities in California. Between 2010 and 2020, Irvine added over 95,000 new residents; among cities statewide with at least 100,000 people, none grew faster over the past decade. This dramatic increase has been fueled by ongoing growth in immigrant communities. With growing numbers of Asian American, Pacific Islander, and AMEMSA residents, the city is also home to an emerging low-income population with needs similar to those of Latinx communities in Costa Mesa. Figure F below illustrates the distribution

of low-income communities across Irvine, Costa Mesa, and Tustin. Recognizing common needs related to affordable housing, language access, and other concerns, public programs providing rental assistance and workforce development target communities in both Irvine and Costa Mesa. These needs are much different than those of affluent communities to the north like Yorba Linda, the Anaheim Hills, and North Tustin.

Figure F: Low-Income Population by Census Tract, Central Orange County California.



Source: United States Census Bureau, 2019 American Community Survey 5-Year Estimates, Table C17002.

Guidance: Irvine and Costa Mesa should be kept whole, drawn together with parts of Tustin not required for VRA compliance in an adjacent district, and apart from more affluent communities to the north like Yorba Linda, the Anaheim Hills (generally east of the 55 Freeway), and North Tustin.

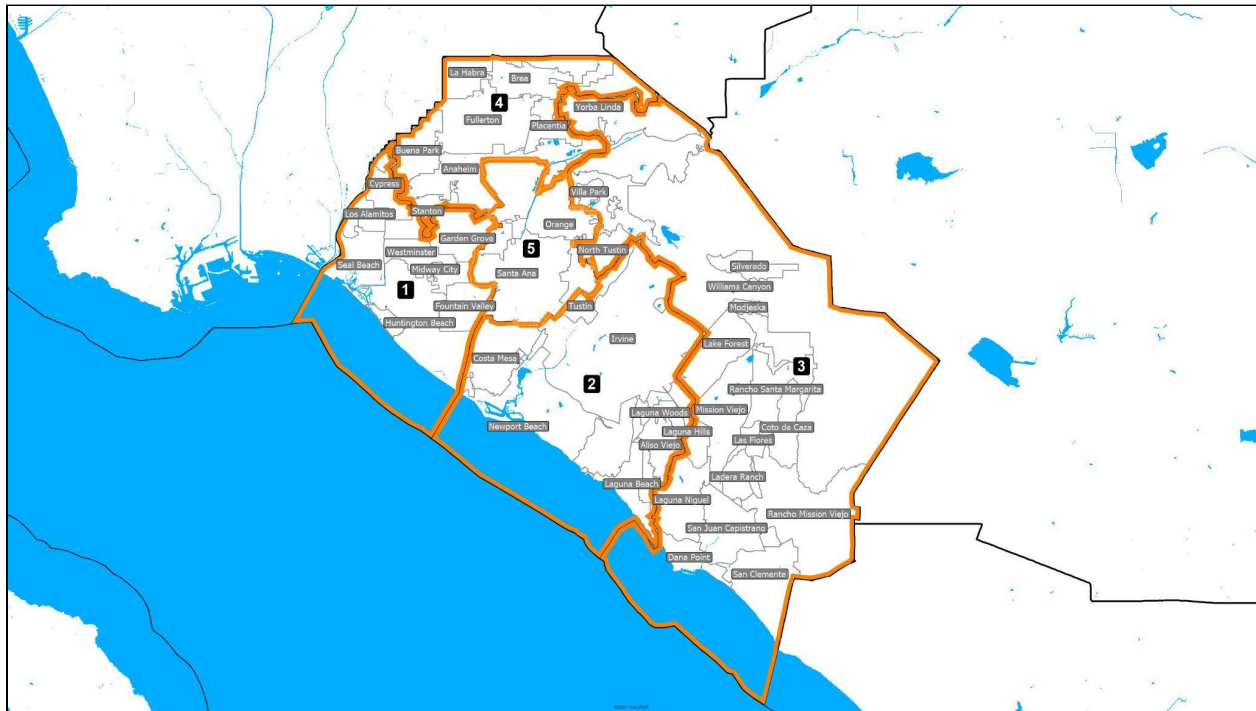
Detailed Testimony: Christina Nguyen (Orange County Asian Pacific Islander Community Alliance) and Kelani Silk (Costa Mesa resident).



PEOPLE'S REDISTRICTING ALLIANCE

Orange County Board of Supervisors Plan

SUMMARY OF PRA ORANGE COUNTY BOARD OF SUPERVISORS PLAN



Highlights of PRA Supervisorial Plan

The PRA's Orange County Board of Supervisors plan centers federal Voting Rights Act compliance and communities of interest that reflect the needs of the county's most impacted residents. With districts drawn to established population equality requirements, the plan also respects other redistricting criteria established under state law, such as contiguity, maintaining the integrity of city boundaries, and compactness when not conflicting with core principles.

Respect for the federal Voting Rights Act. The PRA plan creates a required Latinx Section 2 district in and around Santa Ana.

Respect for communities of interest. The PRA plan centers numerous communities of interest in the drawing of Supervisorial lines. AMEMSA, Asian American, housing cost-burdened, immigrant, Latinx, limited English proficient (LEP), low-income, nail salon worker, Pacific Islander, environmentally impacted, uninsured, and other populations in need were considered in identifying both communities of interest and geographic areas that were similar to and different from one another.

Respect for population equality. The PRA plan includes districts whose total populations are 5% above or below the ideal population of 638,601 persons per Supervisorial district, with a percentage spread less than 10%.

Respect for the requirement of contiguity. The PRA plan draws contiguous Supervisorial districts.

Respects the integrity of city boundaries. In developing the PRA plan, city boundaries were crossed for only three reasons: to ensure population equality, comply with the federal Voting Rights Act, and respect the integrity of communities of interest that cross city lines.

Respect for the requirement of compactness. The PRA plan draws compact districts, each with a population polygon score of 0.50 or greater.

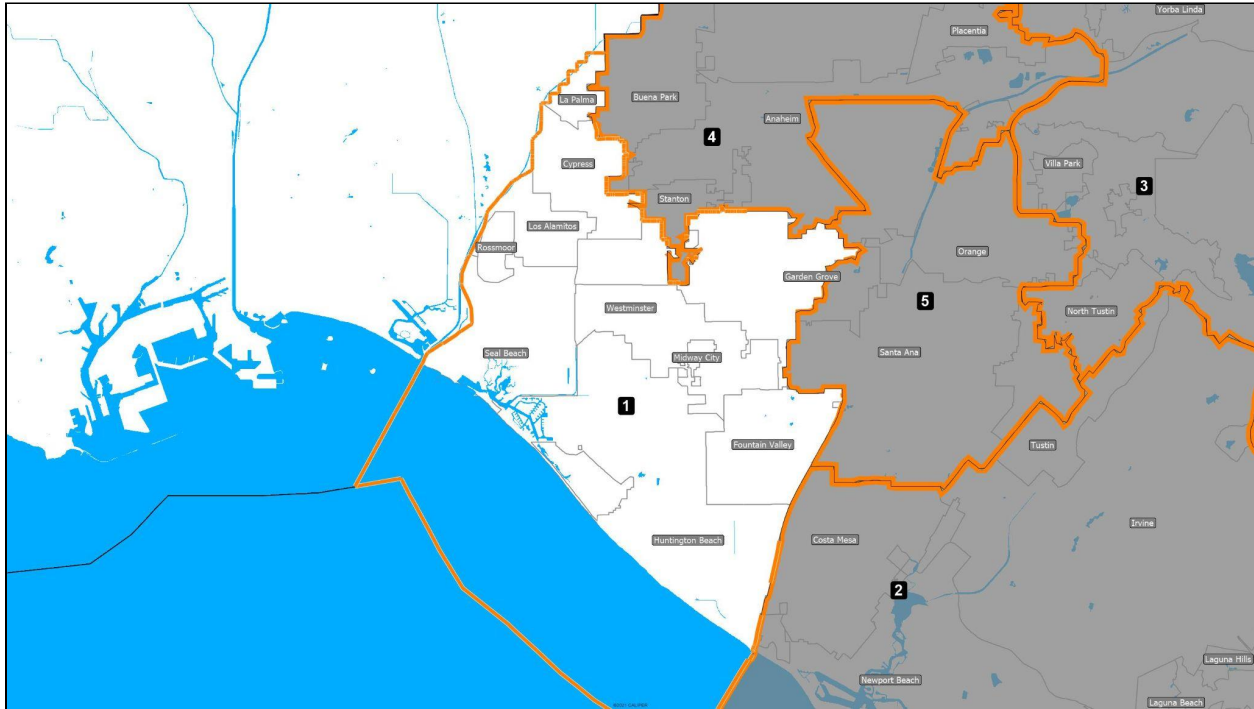
Respect for nonpartisanship. The PRA plan was developed to address community needs and does not favor or discriminate against a political party.

Respect for sequencing requirements. Under the PRA plan, districts 2, 4, and 5 would hold their next elections in 2022, while Districts 1 and 3 would hold their next elections in 2024.

PRA Priorities for Supervisorial Districts

- District 1 unites cohesive Vietnamese American communities in west Garden Grove, Westminster, and north Fountain Valley that share common refugee experiences and the need for social services and affordable housing.
- District 2 keeps Irvine and Costa Mesa whole, draws them together with parts of Tustin, and apart from more affluent communities to the north like Yorba Linda, the Anaheim Hills, and North Tustin.
- District 3 unites higher income hillside and south county cities, including Yorba Linda, the Anaheim Hills, and North Tustin to the north and Lake Forest, Mission Viejo, and Laguna Niguel to the south.
- District 4 unites immigrant and low-income communities of interest in south Fullerton and west Anaheim, Korean American communities in north Buena Park and west Fullerton, and maintains the integrity of the Little Arabia community of interest. These communities are drawn apart from more affluent communities in Yorba Linda and the Anaheim Hills.
- District 5 creates a federal Voting Rights Act compliant district around cohesive Latinx communities in Santa Ana, east Garden Grove, and parts of west Anaheim, Orange, and Tustin. With many low-income residents and mixed immigration status families, the Latinx community of interest in this district faces numerous shared challenges, including immigration enforcement and access to affordable housing.

ORANGE COUNTY BOARD OF SUPERVISORS DISTRICT 1



Total Population: 609,950

Deviation: -28,652 (-4.49%)

Federal Voting Rights Act Compliance: N/A

Contiguity: District is contiguous.

Cities

City	Population in District	Percent of City in District
Cypress	50,235	100.00%
Fountain Valley	57,120	100.00%
Garden Grove	136,983	79.48%
Huntington Beach	199,030	100.00%
La Palma	15,597	100.00%
Los Alamitos	11,794	100.00%

Midway City	8,845	100.00%
Rossmoor	10,634	100.00%
Seal Beach	25,282	100.00%
Westminster	91,083	100.00%

Justification for City Splits

City	Justification
Garden Grove	Included portion of city is part of a cohesive Vietnamese American COI connecting west Garden Grove (west of West Street between Orangewood Ave and Garden Grove Blvd and west of Newhope Street between W Garden Grove Blvd and Westminster Blvd), Westminster, and north Fountain Valley. A portion of city (east Garden Grove) is part of a cohesive Latinx COI and required to create an adjacent Section 2 Voting Rights Act compliant district.

Communities of Interest

District 1 unites cohesive Vietnamese American communities in west Garden Grove (west of West Street between Orangewood Ave and Garden Grove Blvd and west of Newhope Street between W Garden Grove Blvd and Westminster Blvd), Westminster, and north Fountain Valley. Vietnamese American communities in these parts of Orange County share common refugee experiences and the need for social services and affordable housing.

Compactness

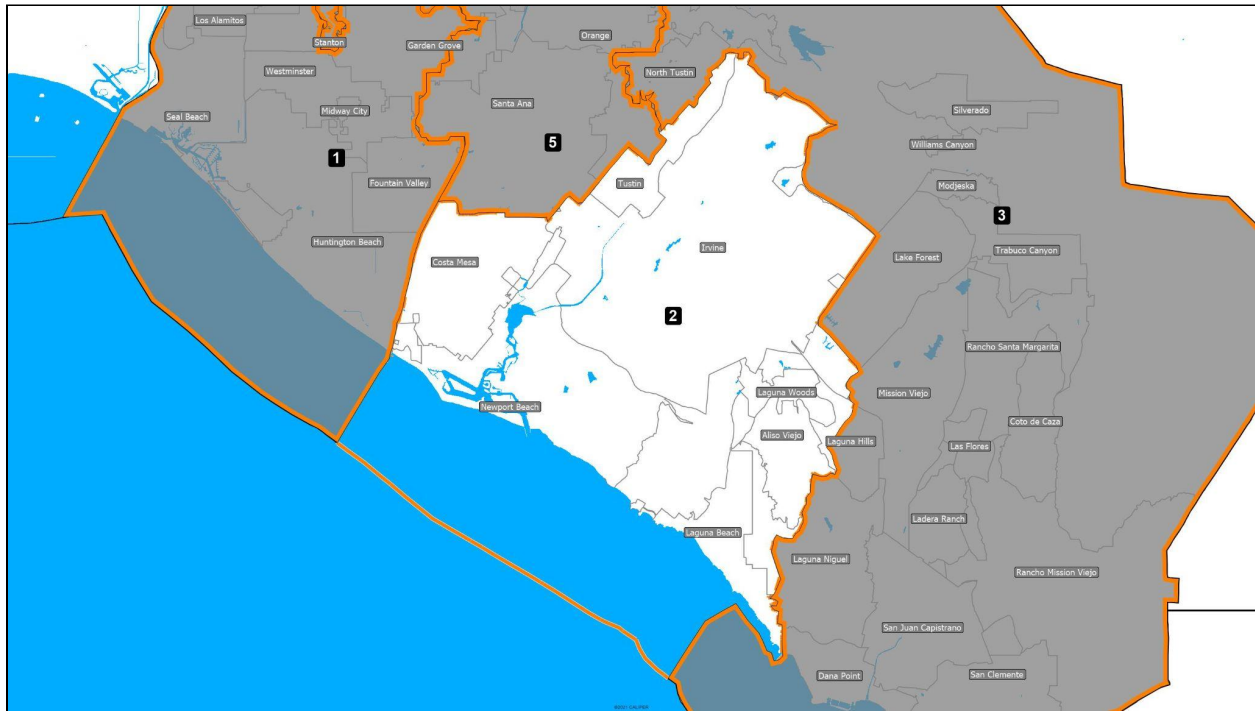
District 1 is compact, with a population polygon score 0.50 or greater.

Other Features

District 1 includes Asian Garden Mall, Bolsa Chica Ecological Reserve, Christ Cathedral, Cypress College, Garden Grove Park, Hyundai Motor America, Quicksilver Incorporated, Los Alamitos Racetrack, and Mile Square Regional Park.

Next election: 2024

ORANGE COUNTY BOARD OF SUPERVISORS DISTRICT 2



Total Population: 664,667

Deviation: +26,065 (+4.08%)

Federal Voting Rights Act Compliance: N/A

Contiguity: District is contiguous.

Cities

City	Population in District	Percent of City in District
Aliso Viejo	52,222	100.00%
Costa Mesa	112,137	100.00%
Irvine	307,959	100.00%
Laguna Beach	23,062	100.00%
Laguna Hills	16,901	53.83%
Laguna Woods	17,658	100.00%

Lake Forest	16,405	19.08%
Newport Beach	85,338	100.00%
Tustin	30,955	38.50%

Justification for City Splits

City	Justification
Laguna Hills	A portion of city is required to ensure population equality of district.
Lake Forest	A portion of city is required to ensure population equality of district.
Tustin	A portion of city is part of a cohesive Latinx COI and required to create an adjacent Section 2 Voting Rights Act compliant district.

Communities of Interest

District 2 keeps Irvine and Costa Mesa whole, draws them together with parts of Tustin, and apart from more affluent communities to the north like Yorba Linda, the Anaheim Hills (generally east of the 55 Freeway), and North Tustin. Irvine is one of the fastest growing cities in California. Between 2010 and 2020, Irvine added over 95,000 new residents; among cities statewide with at least 100,000 people, none grew faster over the past decade. This dramatic increase has been fueled by ongoing growth in immigrant communities. With growing numbers of Asian American, Pacific Islander, and AMEMSA residents, the city is also home to an emerging low-income population with needs similar to those of Latinx communities in Costa Mesa. Recognizing common needs related to affordable housing, language access, and other concerns, public programs providing rental assistance and workforce development target communities in both Irvine and Costa Mesa. These needs are much different than those of affluent communities to the north like Yorba Linda, the Anaheim Hills, and North Tustin.

Compactness

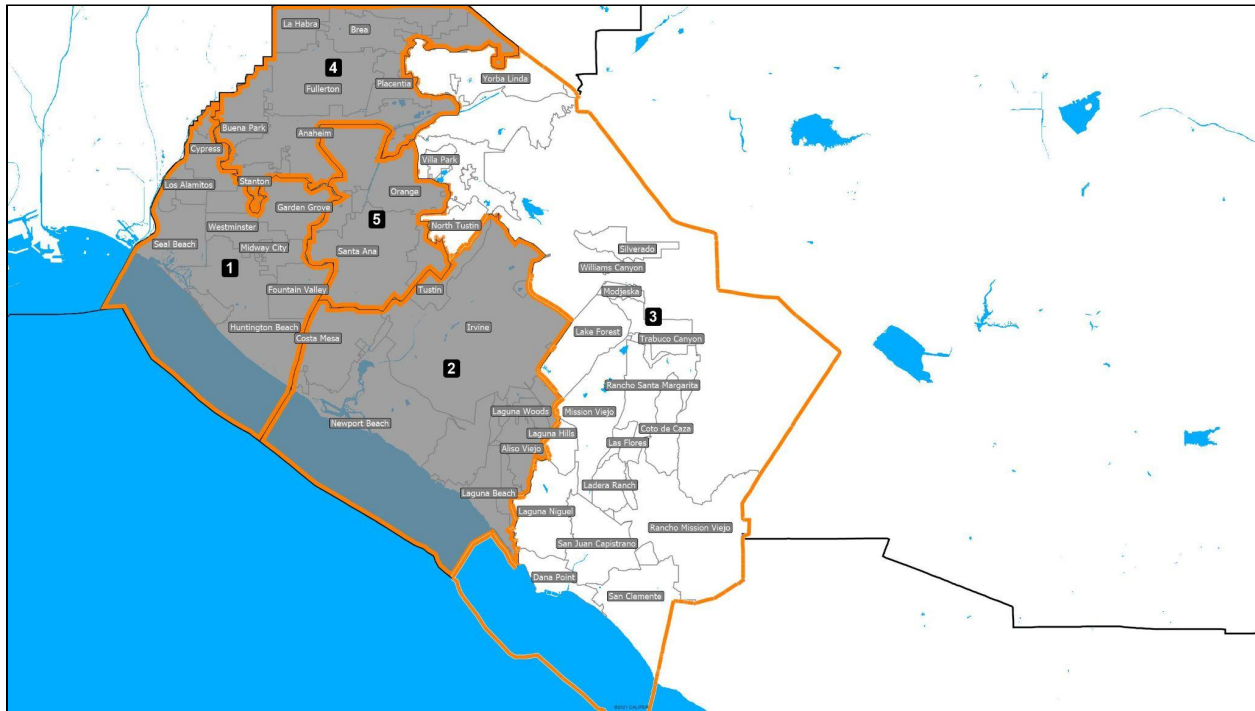
District 2 is compact, with a population polygon score 0.50 or greater.

Other Features

District 2 includes Crystal Cove State Park, Fashion Island, Ingram Micro Incorporated, Irvine Spectrum Center, John Wayne Airport, Newport Harbor, Orange County Fairgrounds, Segerstrom Center for the Arts, South Coast Plaza, and the University of California Irvine.

Next election: 2022

ORANGE COUNTY BOARD OF SUPERVISORS DISTRICT 3



Total Population: 669,419
Deviation: +30,817 (+4.83%)

Federal Voting Rights Act Compliance: N/A

Contiguity: District is contiguous.

Cities

City	Population in District	Percent of City in District
Anaheim	46,881	13.48%
Coto de Caza	14,723	100.00%
Dana Point	33,144	100.00%
Ladera Ranch	26,188	100.00%
Laguna Hills	14,497	46.17%
Laguna Niguel	64,417	100.00%

Lake Forest	69,559	80.92%
Las Flores	6,004	100.00%
Mission Viejo	93,760	100.00%
Modjeska	632	100.00%
North Tustin	25,749	100.00%
Orange	33,354	23.79%
R Mission Viejo	10,385	100.00%
R Santa Margarita	47,999	100.00%
San Clemente	64,384	100.00%
San Juan Capistrano	35,271	100.00%
Silverado	932	100.00%
Trabuco Canyon	1,020	100.00%
Villa Park	5,850	100.00%
Williams Canyon	93	100.00%
Yorba Linda	68,414	100.00%

Justification for City Splits

City	Justification
Anaheim	Included portion of city (Anaheim Hills, generally east of the 55 Freeway) is disproportionately high income, distinct from west Anaheim (generally west of the 55 Freeway), which is low-income, environmentally impacted, and housing cost burdened and part of a COI including south Fullerton (south of Chapman Ave) in an adjacent district. A portion of city is also part of a cohesive Latinx COI and required to create an adjacent Section 2 Voting Rights Act compliant district.
Laguna Hills	A portion of city is required to ensure population equality of district.
Lake Forest	A portion of city is required to ensure population equality of district.
Orange	A portion of city is part of a cohesive Latinx COI and required to create an adjacent Section 2 Voting Rights Act compliant district.

Communities of Interest

District 3 unites higher income hillside and south county cities, including Yorba Linda, the Anaheim Hills (generally east of the 55 Freeway), and North Tustin to the north and Lake Forest, Mission Viejo, and Laguna Niguel to the south.

Compactness

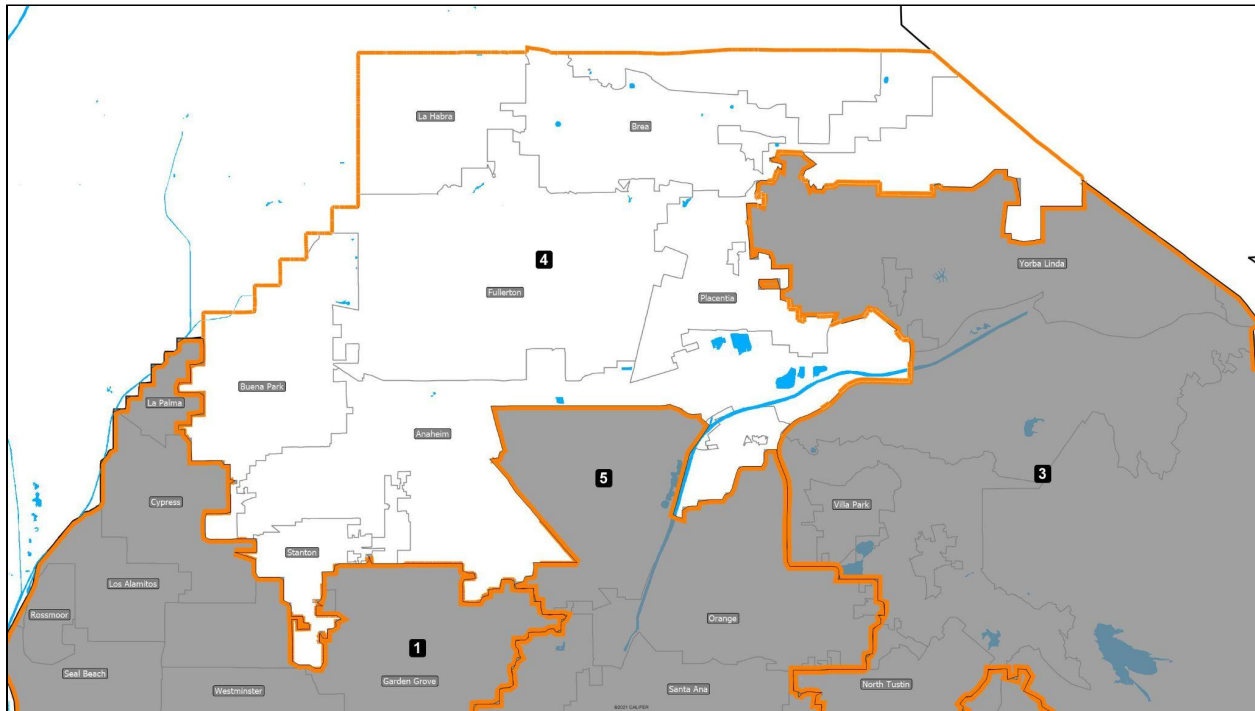
District 3 is compact, with a population polygon score 0.50 or greater.

Other Features

District 3 includes Anaheim Hills Golf Course, Apria Healthcare Group Incorporated, Laguna Niguel Regional Park, Mission San Juan Capistrano, Mission Regional Medical Center, Richard Nixon Presidential Library and Museum, Oakley Incorporated, and Savi Ranch.

Next election: 2024

ORANGE COUNTY BOARD OF SUPERVISORS DISTRICT 4



Total Population: 640,323

Deviation: +1,721 (+0.27%)

Federal Voting Rights Act Compliance: N/A

Contiguity: District is contiguous.

Cities

City	Population in District	Percent of City in District
Anaheim	188,503	54.21%
Brea	47,397	100.00%
Buena Park	84,188	100.00%
Fullerton	143,929	100.00%
La Habra	63,234	100.00%
Orange	11,063	7.89%

Placentia	51,926	100.00%
Stanton	38,067	100.00%

Justification for City Splits

City	Justification
Anaheim	Included portion of city is disproportionately low-income, environmentally impacted, and housing cost burdened and part of a COI including south Fullerton (south of Chapman Ave) and west Anaheim (generally west of the 55 Freeway), distinct from higher income communities in Anaheim Hills (generally east of the 55 Freeway). A portion of city is also part of a cohesive Latinx COI and required to create an adjacent Section 2 Voting Rights Act compliant district.
Orange	A portion of city is part of a cohesive Latinx COI and required to create an adjacent Section 2 Voting Rights Act compliant district.

Communities of Interest

District 4 unites immigrant and low-income communities of interest in south Fullerton and west Anaheim, Korean American communities in north Buena Park and west Fullerton, and maintains the integrity of the Little Arabia community of interest, located in west Anaheim on Brookhurst Street between Crescent Avenue and Katella Avenue. These communities should be drawn apart from more affluent communities in Yorba Linda and the Anaheim Hills. Two of Orange County's largest cities, both Fullerton and Anaheim are socially and economically diverse with clear divisions between those with considerable needs and more affluent residents. In Fullerton, the lower income area of south Fullerton and the higher income north Fullerton are roughly divided by Chapman Ave. In Anaheim, the lower income west Anaheim and the higher income Anaheim Hills are roughly divided by the 55 Freeway. Low-income residents in south Fullerton and west Anaheim share common challenges, including environmental justice concerns and access to affordable housing.

Compactness

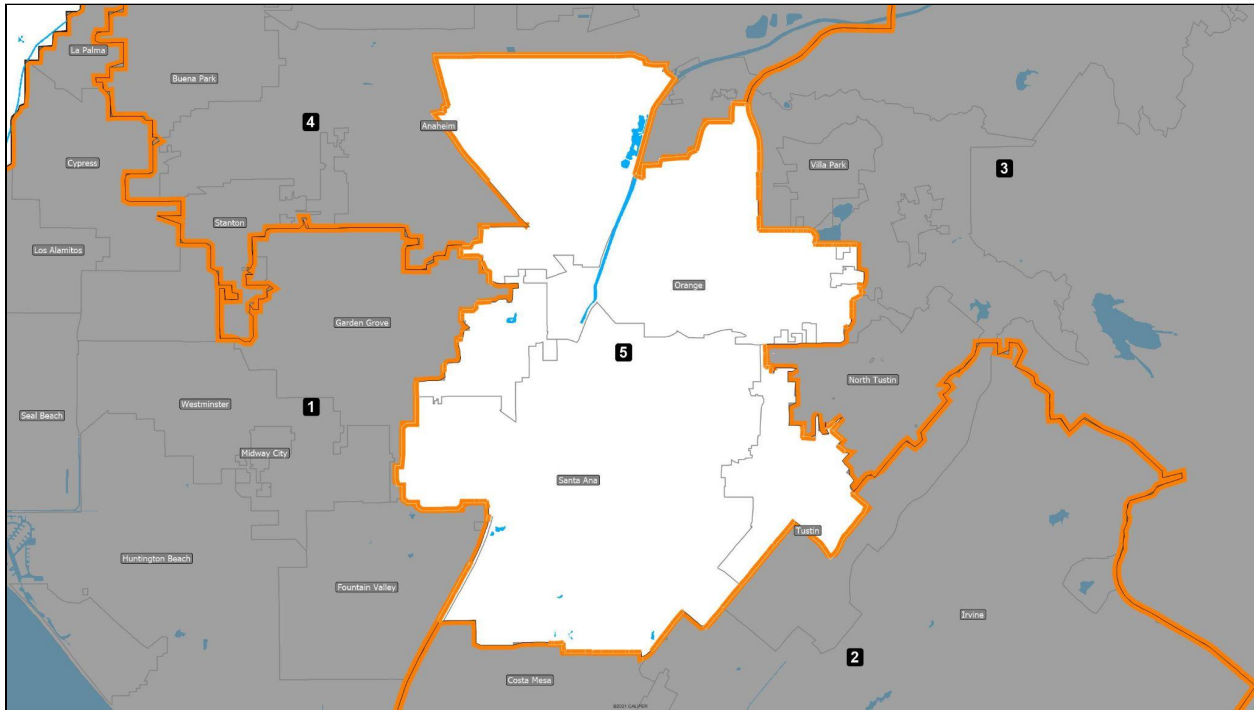
District 4 is compact, with a population polygon score 0.50 or greater.

Other Features

District 4 includes the Anaheim Convention Center, Beckman Coulter Incorporated, Brea Mall, Buena Park Downtown, Cal State Fullerton, Disneyland, and Knotts Berry Farm.

Next election: 2022

ORANGE COUNTY BOARD OF SUPERVISORS DISTRICT 5



Total Population: 608,651

Deviation: -29,951 (-4.69%)

Federal Voting Rights Act Compliance: SECTION 2 DISTRICT

Group	Voting-Age Population		Citizen Voting-Age Population	
	#	%	#	%
Latinx	297,332	63.84%	177,018	53.30%

Contiguity: District is contiguous.

Cities

City	Population in District	Percent of City in District
Anaheim	112,373	32.31%
Garden Grove	35,364	20.52%

Orange	95,773	68.32%
Santa Ana	311,393	100.00%
Tustin	49,457	61.50%

Justification for City Splits

City	Justification
Anaheim	Included portion of city is part of a cohesive Latinx COI and required to create a Section 2 Voting Rights Act compliant district.
Garden Grove	Included portion of city is part of a cohesive Latinx COI and required to create a Section 2 Voting Rights Act compliant district.
Orange	Included portion of city is part of a cohesive Latinx COI and required to create a Section 2 Voting Rights Act compliant district.
Tustin	Included portion of city is part of a cohesive Latinx COI and required to create a Section 2 Voting Rights Act compliant district.

Communities of Interest

District 5 creates a federal Voting Rights Act compliant district around cohesive Latinx communities in Santa Ana, east Garden Grove, and parts of west Anaheim, Orange, and Tustin. Based on official redistricting data released by the Statewide Database at U.C. Berkeley in September, the Latinx community can constitute a majority of a Supervisorial district's citizen voting-age population in this part of Orange County. The PRA has commissioned the UCLA Voting Rights Project to conduct a racially polarized voting analysis, with outcomes to be provided to Orange County redistricting staff shortly. With many low-income residents and mixed immigration status families, the Latinx community in this district faces common challenges, including immigration enforcement and access to affordable housing.

Compactness

District 5 is compact, with a population polygon score 0.50 or greater.

Other Features

District 5 includes Anaheim Stadium, Bowers Museum, Chapman University, Honda Center, First American Financial Corporation, MainPlace Mall, Orange County Civic Center, Orange County Hall of Administration, Pacific Life Insurance Company, and UCI Medical Center.

Next election: 2022

APPENDIX A: PRA COMMUNITIES OF INTEREST TESTIMONY

August 3, 2021 (Mission Viejo)

Provided by	Geographic Focus	Guidance
Daniel Ichinose (OCCET)	County	Comply with the federal Voting Rights Act, respect communities of interest.
Cynthia Valencia (ACLU)	County	Comply with the federal Voting Rights Act.

August 4, 2021 (Fountain Valley)

Provided by	Geographic Focus	Guidance
Hina Ahmad (South Asian Network)	Buena Park, Fullerton, and Anaheim	Keep the South Asian community in Buena Park, Fullerton, and west Anaheim whole.
Sarai Arpero (Santa Ana Resident)	Santa Ana	Keep Santa Ana whole.
Kayla Asato (Orange County Environmental Justice)	Santa Ana	Draw the communities in the Madison Park neighborhood, the Santa Ana neighborhoods between Cedar and Evergreen, the 760 and 762.04 census tracts in Orange, and a majority of Anaheim in the 864 and 865 census tracts together.
Ana Charco (Latino Health Access)	Santa Ana	Keep low-income and immigrant communities in Santa Ana whole.
Taavi Kaskla (United Domestic Workers)	Anaheim, Santa Ana, Garden Grove, and Westminster	Keep the Latinx community in Anaheim and Santa Ana whole. Keep the Vietnamese community in Garden Grove and Westminster whole.
Charlene Kazner (Pacific Islander Health Partnership)	West Garden Grove	Draw Native Hawaiian and Pacific Islander communities in west Garden Grove with Asian American communities in Garden Grove, Westminster, and Fountain Valley.

Adela Montanez (Santa Ana Resident)	Santa Ana	Keep Latinx, youth, mixed status families, and communities without health insurance in Santa Ana whole.
Caroline Nguyen (California Healthy Nail Salon Collaborative)	West Garden Grove and Westminster	Keep Vietnamese nail salon workers in west Garden Grove and Westminster whole.
Laura Pantoja (Santa Ana Resident)	Santa Ana	Keep low-income and immigrant communities in Santa Ana whole.
Araceli Robles (Santa Ana Resident)	Santa Ana	Keep Santa Ana whole.
Vincent Tran (VietRISE)	Little Saigon	Keep the Vietnamese community in Garden Grove, Westminster, and Fountain Valley whole.
Maria Victoria (Santa Ana Resident)	Santa Ana	Keep Latinx, working-class, low-income, and mixed status families in Santa Ana whole.

August 5, 2021 (Orange)

Provided by	Geographic Focus	Guidance
Kayla Asato (Orange County Environmental Justice)	Santa Ana	Draw the communities in the Madison Park neighborhood, the Santa Ana neighborhoods between Cedar and Evergreen, the 760 and 762.04 census tracts in Orange, and a majority of Anaheim in the 864 and 865 census tracts together.
Christina Nguyen (Orange County Asian Pacific Islander Community Alliance)	Irvine	Keep Irvine whole, together with Costa Mesa, and separate from Yorba Linda and the Anaheim Hills.
Dulce Saavedra (Resilience Orange County)	Santa Ana	Keep Santa Ana whole.

August 11, 2021 (Fullerton)

Provided by	Geographic Focus	Guidance
Karen Alvarado (Orange County Congregation Community Organization)	Fullerton and Anaheim	Keep low-income Latinx communities in south Fullerton and west Anaheim whole.
Kayla Asato (Orange County Environmental Justice)	Fullerton and Anaheim	Draw Fullerton (south of Chapman Ave) with west Anaheim (west of 55 Freeway).
Susan Cheng (AHRI for Justice)	Fullerton and Buena Park	Keep low-income, API, Latinx, immigrant, and LGBTQ+ communities in Fullerton and Buena Park whole.

August 12, 2021 (Costa Mesa)

Provided by	Geographic Focus	Guidance
Kelani Silk (Costa Mesa resident)	Costa Mesa	Draw Marshallese communities in Costa Mesa with Irvine.

Written Testimony

Provided by	Geographic Focus	Guidance
Rashad Al-Dabbagh (Arab American Civic Council)	Little Arabia	Keep Little Arabia whole.
Otniel Pavia (Orange County Voter Information Project)	Orange	Draw the Cypress Street Barrio in Orange with Santa Ana and west Garden Grove.

APPENDIX A: PRA COMMUNITIES OF INTEREST TESTIMONY

**THE FOLLOWING TRANSCRIPTS OF PUBLIC TESTIMONY PROVIDED TO THE BOARD
AND REDISTRICTING STAFF ARE ORGANIZED BY COMMUNITY-BASED ORGANIZATION.**

Community of Interest Testimony to the OC Board of Supervisors

Hi, my name is Rashad Al-Dabbagh and I am speaking on behalf of the Arab American Civic Council.

Our organization builds Arab American community power by facilitating their civic participation in Orange County. In addition, we are a member of the People's Redistricting Alliance, a coalition of community-based organizations established to promote a greater community voice in statewide and local redistricting processes here in Orange County.

Our community of interest is the Arab community. Arab Americans in Orange County are diverse in culture and faith, and originate from more than a dozen countries in the Middle East and North Africa region. The Arab community is also diverse in its socioeconomic status, education levels, and immigration status. Some came as refugees or asylum seekers, others for better opportunities. The Arab community in Orange County is bound together by a shared history, language, and geography.

While our community is scattered around Orange County, there's a significant number of residents in West Anaheim around what is unofficially known as Little Arabia, which is on and around Brookhurst Street primarily between Crescent Avenue and Katella Avenue. Little Arabia is home to more than one hundred small businesses, including ethnic grocery stores, restaurants, cafes, hair salons, as well as religious institutions such as the West Coast Islamic Society, and nonprofit organizations and social service organizations that serve the community in various capacities.

Anaheim's Little Arabia is a cultural destination, and safe space for Arabic-speaking immigrants as well as other immigrants and refugees from the Greater Middle Eastern region.

It is important that the Arab community be taken into consideration in the new district maps. Our community, like many other communities, works together to support one another, share resources, and advocate for its needs. It is important that Little Arabia be kept whole because of the shared social needs of the community and the needs of small business owners. Thank you.

Comments at 8/4 OC redistricting community workshop

Good evening, my name is Cynthia Valencia and I am a Senior Policy Advocate and Organizer at the ACLU of Southern California and also a member of the People's Redistricting Alliance. I am a current resident and grew up in Orange County. I am here today to uplift communities, specifically in current district 1, that are being disenfranchised and their vote is being diluted because of the current district configuration. For this redistricting cycle, it will not be sufficient for the Board or County staff to just slightly redraw the lines from the 2011 process. As a reminder, in 2011 there was an ultimately successful attempt to draw supervisorial lines that ensured full Republican control of the Board of Supervisors, with every then-Supervisor meeting with the OC Republican chairman. Additionally, GOP leaders made multiple statements to local news outlets about their success in maintaining Republican control for all the Board of Supervisors seats. Similar behavior would be violating the Fair Maps Act passed in 2018. And this year, the board and County staff need to make the changes necessary to right the wrongs from 2011. The Act also ranks keeping communities of interest as one of the top principles the Board must consider in drawing lines, and excludes relationships with political parties, incumbents, or political candidates as factors that the Board may consider when assessing communities of interest.

As the testimony you've heard today confirms, there are communities of interest in Orange County that are made up of large concentrations of Latinx voters. These communities share interests and concerns in common, tend to support the same candidates and policies, and have been negatively impacted by the current configuration of the districts because they have been unable to elect candidates of choice, since the drawing of the district maps in 2011. The Voting Rights Act mandates the creation of minority-majority districts in precisely in these situations.

We want to reiterate, that the Board must not attempt to meet its Voting Rights Act obligations by placing most Latinx voters into just one majority-Latinx district. Like cracking, the Supreme Court and state law also prohibit packing: placing as many Latinx voters into just one district so they have less political power than their size merits. The only reason for this board would avoid drawing Latinx majority districts this cycle would be to protect incumbency and/or political party interests. This not only violates the Voting Rights Act but now also violates various provisions of the Fair Maps Act. Latinx voters should, like all other voters, be equally and fairly represented in the new supervisorial district map. We at the ACLU and People's Redistricting Alliance are more than happy to work with County staff and the Board of Supervisors to ensure they will not violate the Voting Rights Act or the Fair Maps Act. Thank you.

ORAL TESTIMONY (AUGUST 11 COI PUBLIC HEARING)

Good afternoon, my name is Susan Cheng and I am speaking on behalf of AHRI for Justice. Our organization serves low-income individuals and families, undocumented workers, young people, and survivors of domestic violence through our many programs such as civic engagement, youth organizing, and direct legal services. In addition we are a member of the People's Redistricting Alliance, a coalition of 16 community-based organizations established to promote a greater community voice in statewide and local redistricting processes here in Orange County.

The communities of interest we serve in the city of Fullerton and Buena Park primarily consist of Asian American, Latinx, Pacific Islander, undocumented & immigrant communities, LGBTQ+ folks, and low-income communities of color. Many of these communities face similar issues due to the lack of resources provided, such as lack of affordable housing due to gentrification. And even lack of resources and support when cities were shut down due to Stay At Home orders back in March last year. Yet, these communities are the backbone of the cities' abundant small businesses and cultural landscape. We are also seeing more and more young folks from the large student populations of Cal State Fullerton and Fullerton College being actively involved in Fullerton's civic life. These young and working-class residents living in Fullerton and surrounding cities like Buena Park, want nothing more than to have their fair share of resources so their communities can thrive. Many of the students we work with want to see Ethnic Studies implemented in K-12 schools. They want community gardens, affordable housing, and accessible mental health resources. Again and again, the needs of our underserved communities such as Asian American, Latinx, Pacific Islander, immigrant, and low income communities of color are not addressed. Even when immigrant communities **do** want to get involved, there are obstacles such as language barriers, accessibility, time restraints, and even more that further distance folks from being able to use their voice. Instead the focus tends to be on tourism and businesses such as the vacation spots down Beach Blvd, like Knotts Berry Farm, and the Downtown Fullerton business district rather than prioritizing marginalized folks who are the pillar of the community.

Now more than ever, it is time for this to change. It is crucial that our communities in Fullerton and Buena Park are kept together because they share similar struggles and experiences. By staying together, we have a stronger voice to ensure that policymakers will address our needs.

Good afternoon, my name is Caroline Nguyen. I'm a Garden Grove resident and I'm here on behalf of the California Healthy Nail Salon Collaborative. Our organization works to improve the health, safety, and rights of the nail and beauty care workforce to achieve a more sustainable and just industry. We're also a member of the People's Redistricting Alliance, which is a coalition of 15 community-based organizations established to promote a greater community voice in statewide and local redistricting processes in Orange County.

Our community of interest is nail salon workers, who have a deep historical connection and origin in Southern California. In the 1970's, a group of 20 Vietnamese women were trained on how to do manicures at a refugee camp. Afterwards, they became licensed and found jobs at salons across Southern California. As war continued to drive an influx of Southeast Asian immigrants and refugees into the United States, many sought financial security by taking on low-wage jobs, such as those in nail salons.

Today, a little under 70% of nail technicians in California are Vietnamese. As many of us know, Little Saigon in Orange County is home to the largest Vietnamese population in the U.S. This means that while nail salons themselves may be geographically dispersed across Orange County, a significant proportion of its workforce live in the cities that make up Little Saigon, most notably Westminster and West Garden Grove.

Nail salon workers experience chronic exposure to a host of chemicals and toxins that are known to be cancer-causing agents. For 6 days a week, 10 hours a day, they handle glues, polishes, acetone, and other products that cause symptoms like skin rashes and asthma, as well as more long-term health complications like miscarriages and infertility.

Beyond the environmental impacts, manicurists also experience wage theft and labor violations. Nail salon workers earn an average of 25k a year. They have often been misclassified as independent contractors instead of employees and are therefore denied critical protections such as sick time, workers' comp, and breaks. A recent example of how this can be a barrier is during California's first lockdown in March 2020, manicurists who were misclassified as 1099 workers instead of W2 employees were not eligible for unemployment insurance. It wasn't until a second relief package was introduced a few months later that they gained access to these benefits.

Because of these shared challenges, Westminster and the regions in Garden Grove in which many Vietnamese nail salon workers live should be kept together. We also support a federal Voting Rights Act district that keeps Santa Ana whole due to shared

racial demographics, socioeconomic conditions, and environmental struggles such as pollution and soil lead levels.

The nail salon industry has tripled over the last 2 decades and now generates over 7 billion dollars in revenue annually. As the demand for nail services continues to rise, it is vital that we sustain the political presence and cohesion of a workforce that has been facing a long-overlooked epidemic of health, socioeconomic, and labor concerns.

- **8/4/2021 Testimonies**

- Ana Charco

- Hello, my name is Ana Charco and I am a program associate with the Civic Engagement and Advocacy Program at Latino Health Access. As a program associate, I work with the Policy Coordinator in researching policies and data on social determinants of health and other topics relevant to LHA's policy campaign of focus, monitor city policies and public meetings that are relevant to LHA's policy platform, and recently helped in approving 1.3 million in rental assistance through the City of Santa Ana's Emergency Rental Assistance Program. While I am a part and here on behalf of Latino Health Access, I am ultimately a resident of the City of Santa Ana, who wants her community and needs to be acknowledged, advocated, and taken into account when setting the district lines. The city of Santa Ana is a city of hard-working families with many employed in "essential jobs" that are unfortunately often overlooked and underpaid. Many families in Santa Ana are low-income Latinx families and have mixed immigration status, who also share a very strong sense of community, with a large number of community organizations and resident-led organizations that have come together over the years to promote equitable policies and celebrate the Latinx culture through events, activities, and workshops. From a very young age, I have been heavily involved in community service and community organizing with the hope to achieve long-lasting and equitable change in the city of Santa Ana. However, after graduating college and returning to Santa Ana, the fact of the matter is that Santa Ana is far away from achieving long-lasting and equitable change despite it being one of the youngest, progressive, and most diverse cities in California. It is, therefore, that I ask of you today to take into consideration communities of interest that include our most vulnerable communities such as low-income communities, immigrant populations, uninsured populations, and youth during the redistricting process. I believe that a federal Voting Rights Act district exists in and around Santa Ana and that creating that district might require separating Santa Ana from Garden Grove and Westminster. It is decisions like this that contribute to making lasting and meaningful change.

- Laura Pantoja

- Good afternoon Supervisor Do, my name is Laura Pantoja. I am here on behalf of Latino Health Access or LHA, a community organization that has provided health education and prevention services to Orange County residents since 1993. Our mission has two areas of focus:
 - 1) Provide culturally appropriate health programs and services to address priority health problems; and
 - 2) involve low-income people with opportunities in transforming their environments, providing tools, training, and mechanisms for civic engagement and participation.

We believe that redistricting is critical to achieving our community health goals. We are part of the **People's Redistricting Alliance**, a coalition of 15 community organizations established to promote a greater voice in the community. in the state and local redistricting processes here in Orange County. Our community of interest is the low-income Latinx families in the city of Santa Ana. Many are families with mixed immigration status, including undocumented, US residents, and citizens. They are extremely hardworking, and many are employed in "essential jobs" which, sadly, are also poorly paid. Our main office building and park/community center are located on Calle Cuatro (Calle 4) in Santa Ana, in the middle of downtown. "La Cuatro," as it is known, has Latino restaurants and small businesses that have historically been a gathering place for many families who want to enjoy Latinx cultures. It is also surrounded by residential neighborhoods that connect to the city center and are affected by downtown business, unfortunately negatively with gentrification in more recent years. Downtown Santa Ana is where we see a concentration of low-income renter families in Santa Ana. Our community of interest has many shared needs. Low-income Latinx families need accountability and transparency for public officials and city departments, especially the police department. They need strong protections for renters and immigrants through policies, funds, and programs to support community demographics and needs. They need the city to invest in affordable housing for existing residents. They need the right to participate in local city and school district elections, regardless of their immigration status. They need community control and decision over public lands. They need to stay in the city without fear of being displaced or separated from their families by deportations. They need access to health care regardless of their immigration status. Santa Ana has significantly lower incomes compared to other cities in the county, often affecting its access to funding for programs and resources. Dividing this community of interest would prevent these already affected families from having access to the public resources that many depend on to survive and would prevent them from having a voice in many policies that affect directly and indirectly.

- Sarai Arpero
 - Good afternoon my name is Sarai Arpero and I am the Lead Promoter in Santa Ana Latino Health Access that has served the Santa Ana community for more than 25 years. During my years of direct work in the community in which I also live, I bought and paid taxes. The community I serve is mostly migrant, extremely low income, mixed immigration status, with

very low wages, very high rents, homes in very poor condition, and with the zip codes with the most contagions of CV 19. It is important to recognize that housing problems, the homeless community, extreme poverty, lack of access to mental health resources, lack of open spaces and opportunities for our children and youth did not come with the pandemic. The pandemic only aggravated and gave more light to all these problems that have not been addressed for many years and due to lack of representation in our districts and our representatives have not been able to solve in all these years. Many families were greatly affected during this pandemic due to not having access to a doctor, not being able to pay rent during these months of the pandemic. Our community has debts that are practically not payable due to the loss of jobs as a result of the pandemic. Since federal support to pay rent is not enough and accessible to the entire community, our people have had to ask for very high-interest loans or credits to survive, which has put many families under stress that has affected their mental, physical and emotional health. Today I ask for your vote for redistricting by choosing maps that truly represent the community that I serve and in which I live. We deserve to have a voice and that the decisions of those who represent us have consistency. We are a very young growing community and we are the ones working to build the economy in this county. We deserve to live with equity, health services for all, access to mental health services, decent housing, and to be taken into account as we recover from this pandemic. Thank you.

- Araceli Robles

- Good afternoon, my name is Araceli Robles and I am a Health Promoter at LHA in the Civic Engagement and Advocacy Department and a resident of the city of Santa Ana for 20 years. My zip code is 92701. As an LHA employee, I work organizing different community groups formed mainly by mothers in the Pio Pico Lowel / King School neighborhoods, which have been one of the most affected neighborhoods by the COVID-19 Pandemic. The main motive of these groups is to strengthen community leadership and to advocate for the needs of the community. Different workshops are shared using the skills of the participants so that they can learn about dressmaking, jewelry, flower arrangements, among other activities. This in turn allows them to contribute a little money to their home. Ten years ago I participated in a meeting on how to use funds in our

county using the census data but we would never have imagined that we would experience a pandemic as terrible as COVID 19 and see the inequity that exists in our community. Unfortunately, Santa Ana was the most affected and had high numbers of infection and mortality rates in the county. What you should never forget is that these numbers have a face and name that are parents, grandparents, children, siblings, great-nephews, friends who left their family in a more difficult economic situation, especially without their presence. At this time you have the decision to redistribute the districts where equity can be seen and allow the most disadvantaged communities to have sufficient resources in the coming years to continue living after this pandemic. It is very sad and unfortunate that we are all affected by the pandemic but even so that the Board continues to grant funds to the Sheriff's Department instead of our community. These funds would have made a difference in the community and would have allowed families to have food on their tables, take care of their children, and thus continue to work for us. Santa Ana residents were mainly considered essential workers during this time but were not eligible to have quality health care and decent housing throughout the pandemic. I just want to remind you that the funds you manage are from the community as they are our taxes. You can make a difference by supporting the redistricting proposal that we support as a coalition. My community is very culturally diverse, multi-ethnic, but above all, we take action to improve our community, and not just being spectators we are part of the solution. I invite you to meet the families of the community cafeteria and realize that we are a community that will never be indifferent to the pain of our neighbors, friends, and family. Thank you.

- Maria Victoria

- Good afternoon, my name is Maria Victoria. I have been a resident of Santa Ana for 14 years. I live in the 92703 zip code, one of the codes most impacted by the COVID 19 pandemic. The area I live in is between Bristol and flower. I represent a group of mothers who meet in a community cafeteria at Lowell and King Schools, where we hold meetings and create spaces for crafts and conversation, but we also agree to support our community. Together with Latino Health Access during the pandemic, we organized to distribute food to our areas since the pandemic affected us a lot. For instance, we had entire families infected with covid who could not go out to buy food and basic things such as diapers, soap, and medicines.

We the mothers of the community distributed food and everything else we could to ensure that the families had food and stayed inside their homes with their children and family safe. Indeed, many of these expenses were covered with our income. I am from a low-income and mostly undocumented migrant community, where many families live in cramped spaces with very expensive rents and very little access to health insurance. I ask that the recommended redistribution of districts by the People's Redistricting Alliance is approved. This will begin the construction of working towards a more equitable and better representation. For this reason, you must support this redistricting so that communities of interest such as mine: Latino, working-class, low income, mixed immigration status families have better representation and are taken into account. This will allow us to ultimately improve the quality of life for those of us who live, work, and build the economy and workforce of this county.

■ Adela Montanez

- Good afternoon, my name is Adela Montanez, a community worker in the Civic Engagement and Advocacy Department at LHA. The community it works with is a Latino, hard-working, mixed-status, low-income, and youth community. This community is located in the Lacy Area code 92701. Downtown enters Grand Street, First Washington Street, French, and First Street. This area was greatly impacted by the pandemic with the highest rate of infections and suffered from a lack of jobs especially in service workers such as restaurants, hotels, school workers, babysitters, garden workers, and the area of construction, etc. The primary needs of this community are:
 - health insurance.
 - Resources to pay the rent.
 - Resources to put food on their tables.

In my experience working with the Lacy community, the frequent challenges I hear are:

- Lack of work
- The high cost of housing.
- Lack of accessible housing.
- Lack of medical insurance.
- The large debts they have acquired so as not to be evicted.
- Uncertainty towards the future.

Despite the circumstances, it is a very united, hard-working community. For these reasons, we are asking you to support the

districts drawn by the People's Redistricting Alliance. The communities of interest that need to be taken into account are

- Youths
- Mixed migrant families
- And communities without health insurance

ORAL TESTIMONY (AUGUST 5 OCBOS COI PUBLIC HEARING)

Hi, my name is Christina Nguyen and I represent the Orange County Asian and Pacific Islander Community Alliance or OCAPICA. OCAPICA is the largest Asian American and Pacific Islander nonprofit organization dedicated to enhancing the well-being of Asians and Pacific Islanders in Orange County. While our main office is in Garden Grove, we are housed and provide services throughout the county, including Irvine. This has allowed us to serve more than 55,000 community members annually across diverse racial and ethnic groups.

One of the many issues we work on is redistricting as a member of the People's Redistricting Alliance. Our communities of interest in Irvine include low-income, limited English proficient, Asian American, Pacific Islander, Middle Eastern, and Latinx communities. In the last couple of decades, Irvine has become home to the largest AAPI community in Orange County, including a diverse mix of Chinese, Korean, South Asian, Vietnamese, and other immigrant families. They are joined by a large number of students, who live near UC, Irvine.

Irvine is similar to Costa Mesa, which is home to many important low-income Pacific Islander communities and where many working-class Latinx and Asian American families live. As the cost of housing skyrockets, these cities face common challenges associated with access to affordable housing, especially the availability of Section 8 assistance. The populations we serve in these cities are also impacted by poverty. Many families live in overcrowded conditions, need access to food and transportation, and have social service needs such as access to Medi-Cal and free and reduced lunch. Language access is another common need. Asian, Latinx, and Middle Eastern community members in these areas speak a language other than English at home, with many in need of translation and other bilingual services. Particularly in the wake of COVID-19, these in-language options are crucial to ensuring that our immigrant communities have access to potential resources, government assistance, and healthcare.

In contrast, Irvine is very different from areas to the north like Yorba Linda or the Anaheim Hills. While Irvine is disproportionately immigrant and most are renters, most Yorba Linda residents are native-born and homeowners. Yorba Linda also has a higher median household income and lower poverty rate. As a result, it has less need for social services and language access programs.

We ask that you respect these communities of interest and prioritize residents' needs as you consider how to draw supervisorial districts. With this in mind, Irvine should remain whole in a supervisorial district and be drawn together with Costa Mesa. The city should not be drawn into the same district with areas that have very different needs, like Yorba Linda and the Anaheim Hills. Thank you.

WRITTEN TESTIMONY (AUGUST 11 OCBOS COI PUBLIC HEARING)

Hello Supervisor Chaffee, my name is Karen Alvarado and I represent the Orange County Congregation Community Organization (OCCCO). OCCCO works to empower individuals and congregations to use their voice to make positive, lasting change within low-income communities of color. Since 2017, we have trained more than 200 faith-based community members through our Leadership Academy. We've had over 30,000 conversations with voters in low-income communities of color during the past five years and involved hundreds of youth in civic engagement. Our current work focuses on Housing with Dignity, Education Justice, and Immigration Rights. We are also a member of the People's Redistricting Alliance, a coalition of 15 community-based organizations established to promote a greater community voice in statewide and local redistricting processes here in Orange County.

Our communities of interest are predominantly marginalized low-income Latinx residents of Orange County, especially working-class immigrant and mixed-status communities. Unfortunately, what brings our communities together is seen far too often in working-class minority communities; a lack of representation, housing inequities, and a lack of code enforcement. Nevertheless, with all of these multi-generational and systemic issues, our communities have been part of monumental achievements, including the implementation of district-based elections in cities like Fullerton and Anaheim. As Orange County grows and demographics change, our communities continue to fight for equitable representation.

Some of the similarities that our communities of interest in West Anaheim and South Fullerton share are that they are predominantly hard-working, immigrant, low income communities of color, facing a lack of affordable housing, contributing to their increasing homeless population. Our communities are impacted by the priority that is placed on tourism in these areas by our local policymakers and thus, leaves our communities with dense neighborhoods and overcrowded housing. This clearly portrays some of the key differences between the communities in West Anaheim and South Fullerton in comparison to those in the Anaheim Hills and Yorba Linda. Anaheim Hills and Yorba are predominantly white, affluent, well-maintained communities who don't experience or rarely experience the same housing and homelessness situations that our communities of interest do.

In conclusion, keeping West Anaheim and South Fullerton together in a supervisorial district is imperative for low-income Latinx communities throughout the northern part of the county, who need to speak collectively with one voice. As our community continues to grow, it is important to preserve the culture they bring while also adapting to changes in their surrounding neighborhoods. Multigenerational residents have continued to fight gentrification; the only way for the needs of these communities to be heard and not ignored by local policy makers would be to not divide them.

ORANGE COUNTY BOARD OF SUPERVISORS**WORKSHOP, PUBLIC HEARING ON REDISTRICTING****August 3 (Mission Viejo)****Testimony****Daniel Ichinose****Research Director, Orange County Civic Engagement Table (OCCET)**

Good evening honorable members of the Board and redistricting staff, my name is Daniel Ichinose, last name spelled I-C-H-I-N-O-S-E. I am Research Director at the Orange County Civic Engagement Table or OCCET, a nonpartisan Asian American Pacific Islander-Latinx-Labor-Environmental Justice alliance based in Garden Grove that is dedicated to engaging county residents year-round to build power and an Orange County that serves everyone equitably and with justice.

Orange County is changing. During the 1990 Census, our county's population was only 36% people of color. Immigration over the last 30 years has transformed the county; 2019 American Community Survey data from the U.S. Census Bureau now show people of color make up more than 60% of Orange County residents. Despite facing real challenges in their day-to-day lives, including a lack of access to healthcare, affordable housing, and other critical resources, our communities are often ignored by policy makers.

We know that how legislative districts are drawn shapes the amount of attention our communities receive from legislators at all levels of government. In January of this year, OCCET helped establish the People's Redistricting Alliance, a coalition of over 15 community-based organizations and residents whose goal is to get low-income communities of color and working families involved in both statewide and local redistricting processes.

Our alliance is organizing both community-based organizations and residents to participate in redistricting by: (1) educating them about redistricting, (2) creating a space through which they identify communities of interest (COI) important to them, (3) mobilizing both to participate in CCRC, Orange County Board of Supervisors, and other public hearings, and (4) working closely with them to create congressional, state, and local legislative redistricting proposals that center those most in need.

As you begin the process of redrawing supervisorial districts, we ask that you take a few important things into account. First, consider communities of interest that include the most vulnerable in our county. Low-income communities, those that lack access to affordable housing or health insurance, are most reliant on county services and have the most to lose if ignored by policy makers. Second, comply with the federal Voting Rights Act. We believe a federal Voting Rights Act requirement exists in Orange County in and around Santa Ana and will

be working with communities to help identify the best way to draw it. Finally, recognize that race can and should be used as one of many factors in the drawing of lines. Race is an allowable consideration in redistricting both to ensure Voting Rights Act compliance and if it is used in concert with other communities of interest in drawing lines.

Thank you for your time and for organizing this and other opportunities for our communities to have a real say in how these lines are drawn. We appreciate all your hard work to make this a fair and transparent process.

Kayla 8/11 testimony

My name is Kayla Asato and I am the redistricting organizer for Orange County Environmental Justice. As our name suggests, OCEJ fights for environmental justice in water quality, cleaning the lead from our soils, better air quality, and electoral change to make all of this happen. We mostly do work in the cities of Santa Ana, Anaheim, and Fullerton. In addition, we are a member of the People's Redistricting Alliance, a coalition of 15 community-based organizations established to promote a greater community voice in statewide and local redistricting processes here in OC.

Because of the work that we do, especially with disadvantaged communities dismissed by our political establishment, our communities of interest typically include low-income communities of color facing environmental justice concerns, many undocumented. Our communities in Fullerton, Anaheim, and Santa Ana are similarly impacted by soil lead levels, sometimes exceeding 50x the recommended limit, ignored when voicing their concerns about water quality due to poor pipes and other infrastructure concerns, or even horrendous air quality from traffic and oil plumes. These devastating environmental justice issues are often overlooked by policy makers, while low-income and mostly Latinx communities already facing problems like housing injustice and police brutality, pay the price.

In Fullerton, our communities of interest are generally south of Chapman Avenue near the Anaheim border. In Anaheim, they are located west of the 55 freeway. In Santa Ana, they are located throughout the city. While these areas face similar environmental justice challenges, they are very different than cities to the north and east like Yorba Linda, areas that face SUBSTANTIALLY less environmental burdens, and have more housing security as a result.

Across these cities, environmental justice is one of MANY challenges our communities face. In Santa Ana, communities have been demanding change and remediation for the soil lead crisis for over four decades, but it still is not seeing substantial progress in the general plan. In Anaheim, communities aren't even getting acknowledgement of Little Arabia, let alone the support for action on the oil plume. In Fullerton, we know that there still has not been any justice for Hector Hernandez and other victims of police brutality, nor has there been action on housing, stopping gentrification, or on Ethnic Studies. These are layered issues impacting those that are ignored the most, heard the least, and lack representation. And that is unacceptable.

And as such, it is essential that these communities of interest are kept together to grow the electoral strength and voice they desperately need. We need power to offset the harm that has been done to our communities and advocate for the changes that we need to achieve even a semblance of equity if not liberation. Let our voices be heard, and allow us to be part of the democratic process.

Kayla 8/4 and 8/5 testimony

My name is Kayla Asato and I am the redistricting organizer for Orange County Environmental Justice. As our name suggests, OCEJ fights for environmental justice in water quality, cleaning the lead from our soils, better air quality, and electoral change to make all of this happen. We mostly do work in the cities of Santa Ana, Anaheim, and Orange. In addition, we are a member of the People's Redistricting Alliance, a coalition of 15 community-based organizations established to promote a greater community voice in statewide and local redistricting processes here in OC.

In the city of Santa Ana, there are large amounts of soil lead and poor air quality, predominantly in the Latinx communities. In Garden Grove and Westminster, the issues and communities are very different in terms of environmental justice concerns. The large majority of Santa Ana is much more similar to the cities of Orange and Anaheim in terms of demographics and issues. Santa Ana and Anaheim have two of the deadliest police departments in California, have the majority of frontline workers in OC, and also bear the brunt of the soil lead crisis, in some cases exceeding 50x the recommended health limit. To be clear, no amount of soil lead is good, but 50x higher than the state recommended limit of toxins poisoning our kids is far too unacceptable. These devastating environmental justice issues are often overlooked by policy makers, while low-income and mostly Latinx communities already facing problems like housing injustice and police brutality, pay the price.

The communities that we serve are primarily based in the Madison Park Neighborhood, the Santa Ana neighborhoods between Cedar and Evergreen, the Southern 760 census tract in Orange, Northwestern Orange tracts like 762.04, and a majority of Anaheim in the 864 and 865 census tracts. The environmental justice burdens in the air and in the soil are far different than the burdens are in Garden Grove and Westminster.

We must keep these environmental burdens in mind when drawing the district lines, ESPECIALLY because they fall along racial and socioeconomic lines. Please keep our communities together when drawing the maps,

And as such, it is essential that these communities of interest are kept together to grow the electoral strength and voice they desperately need. We need power to offset the harm that has been done to our communities and advocate for the changes that we need to achieve even a semblance of equity if not liberation. Let our voices be heard, and allow us to be part of the democratic process.

Community of Interest Testimony to the Orange County Board of Supervisors

Introduction:

Hi, my name is Otniel Pavia. I am writing on behalf of the Orange County Voter Information Project or OCVIP. OCVIP is a nonprofit, non-partisan organization that aims to facilitate the voter registration process and inform voters about the importance of civic engagement. OCVIP does this through presentations, dialogue, canvassing, phone banking, text messaging, and email programs. Increasing voter turnout is the key to making Orange County more representative of its constituents, their beliefs, values, and personal situations. Because redistricting can promote or limit effective civic engagement, we are a member of the People's Redistricting Alliance, a coalition of 16 community-based organizations established to promote a greater community voice in statewide and local redistricting processes here in Orange County.

My community is:

The Cypress Street Barrio. The Barrio's development was closely tied to the citrus industry and its Mexican American workers, and it was well established in Orange by 1920. The barrio's transformation from a rural picker village to an urban blue-collar barrio parallels urbanization patterns of other citrus colonias ("villages") in Orange County. Today, there are families living here that have lived here for over 4 generations. Many residents living here have ties to Mexico particularly from the states of Jalisco, Michoacan, and Zacatecas. Needless to say, the Cypress Street Barrio residents have seen Orange change and have a different perspective of the development and population growth around them.

My community is located:

Cypress Street Barrio, is located near the northwest corner of the Old Town Orange National Register and local register historic districts, the center of the community or *barrio* consists of the 400 block of North Cypress Street between Sycamore and Walnut Avenues. The approximate boundaries of the extent of the Cypress Street Barrio are Rose Avenue to the north, Glassell Street to the east, Almond Street to the south and the railroad tracks to the west.

My community is similar to the following neighborhoods:

Our community, as mentioned, is similar to communities who also share origins through their agricultural history. Since the late 1940s and 1950s, the residential nature of the Cypress Street Barrio has diminished. Access to housing choices throughout the cities, decreased dependence upon jobs in the citrus or other agricultural industries, and the increasingly industrial nature of the neighborhood, have all contributed to residents leaving the places they once called home. Residents that do continue to live in the neighborhood today are generally recent immigrants from Mexico and South America. With that said, the Cypress Street Barrio community shares a lot of similarities with the east side of Garden Grove and Santa Ana.

My community is different from the following neighborhoods:

Our community is different in the sense that we are not like the rest of Orange. When you think of the City of Orange, you think Olde Towne Orange, historic buildings, college town; people seldom think of the areas where low-income families reside--especially when you're located next to a well-known expensive private university. People also think of Villa Park because it is a city within a city! The area that makes up the barrio has census tracts that are very low-income compared to those on the east end of the city.

What makes my community special is:

Our local community is full of rich history--good and bad. As mentioned, many of the old buildings from the '20s are still up; however, many of the residents that helped grow the local economy are gone. While some remain, many newcomers arrive and live in the same neighborhoods that agricultural workers used to live in. A lot of them do not have the choice to go elsewhere because sometimes it is the *more affordable* area to settle in.

In conclusion:

We need better representation for our communities living in low-income Census tracts. A lot of these folks seldom think how something like redistricting will impact them but the more affluent communities do. That is why we expect more of these individuals to attempt to sway your perceptions of our community because they'll say they are part of it when they do not even live with or near us or share similar backgrounds and struggles. In this next round of redistricting, we need to make sure that our barrio is not split apart like it is. As a community we find that it'd be better for low-income working class families, like those living in the Cypress Street Barrio, to be drawn in with Santa Ana and East Garden Grove when boundaries are redrawn.

Written Testimony

ORAL TESTIMONY (OCBOS DISTRICT 1, FOUNTAIN VALLEY, AUGUST 4, 2021)

Intro:

Aloha. My name is Charlene Kazner. I am a Native Hawaiian and have been a resident of West Garden Grove for 43 years. I am testifying on behalf of Pacific Islander Health Partnership (PIHP) which is based in West Garden Grove. PIHP serves the Native Hawaiians and Pacific Islanders (NHPI) in Orange County advocating for good health and well-being. As part of that work, we are involved in statewide and local redistricting as a member of the People's Redistricting Alliance.

My community is:

My communities of interest are Native Hawaiians and Pacific Islanders, including Chamorro, Marshallese, Native Hawaiian, Samoan and Tongan communities. There are approximately 20,000 NHPIs living in Orange County. Approximately 1,200 NHPI's are located throughout West Garden Grove with over one dozen NHPI churches serving our community. NHPI businesses in West Garden Grove include community-based organizations, healthcare partnerships, dance studios, youth program groups and civic clubs.

My community is located:

In West Garden Grove. Native Hawaiians and Pacific Islanders are scattered throughout West Garden Grove and other cities throughout Orange County. There are pockets of NHPIs bordering Brookhurst on the west, Chapman on the north and Trask on the south. NHPI churches and establishments are located within this area. Many NHPIs enjoy the variety of foods from different cultures and this area of West Garden Grove and surrounding cities have many to offer.

My community is similar to the following neighborhoods:

West Garden Grove is similar to the cities of Westminster and Fountain Valley. Our cultures and socio-economics are similar. We share immigration issues and language barriers. More than 60% of households speak a language other than English. Many live in multi-generational households, 2, 3 or more generations per household. Many earn minimum wage and hold two or more jobs to make ends meet. Because of family demands many are forced to work right out of high school instead of going to college.

My community is different from the following neighborhoods:

The cities of Orange and Newport Beach differ from West Garden Grove. English is spoken in the majority of households and the median household income and high school attainment are higher, and foreign born is lower.

What makes my community special is:

We are a unique people from the different islands of the Pacific. We are often overlooked because our population is small. Our needs are masked when combined with the larger Asian American population, therefore, data disaggregation must be a priority to identify our specific needs so we can champion for meaningful and accurate data. NHPI's experienced some of the highest COVID-19 cases and death rates of all racial and ethnic groups in the U.S. so we advocate for programs that fund our community to combat the pandemic.

In conclusion:

Our community shops in West Garden Grove and the surrounding areas. We have built a strong partnership with Asian Americans and other communities in West Garden Grove, Westminster and Fountain Valley. We continue to work with them on many projects working in solidarity for the benefit of all. NHPIs are often overlooked because our population is small so it is important to keep us together so we have a strong, unified voice.

Mahalo nui loa, Thank you.

Charlene Kazner

Pacific Islander Health Partnership

ORAL TESTIMONY (OCBOS DISTRICT 1, FOUNTAIN VALLEY, AUGUST 4, 2021)

ORAL TESTIMONY (OCBOS, DISTRICT 2, COSTA MESA – AUGUST 12, 2021)**Intro:**

Iakwe. My name is Kelani Silk. I am of Marshallese and Kiribati Origin and have been a resident of Orange County for 36 years, of which 12 were spent in Costa Mesa. I am here on behalf of the Marshallese community. Though we are a small community in number, I am here to ensure that our voice is heard and present. To that end, we are involved in statewide and local redistricting as a member of the People's Redistricting Alliance.

My community is:

I represent a vibrant and resilient, faith-based community where the traditional customs of our ancestors can still be seen and practiced to this day, in each of our community homes. Our current population is roughly 5,000 peppered throughout Orange County with the majority in Costa Mesa. As one of the oldest Marshallese communities here on the continent, we play a vital role in preserving the Marshallese heritage and addressing the unique needs to the Marshallese diaspora. For many years the community here in Costa Mesa has been the link between the U.S. and the Marshall Islands in the Pacific and have been instrumental in combating healthcare and immigration issues that continue to plague immigrants from the Republic of the Marshall Islands (RMI).

My community is located:

Our serving areas include Newport Beach and Costa Mesa. with the heart of the community and majority members residing in Costa.

My community is similar to the following neighborhoods:

Costa Mesa is similar to Irvine; many live in multi-generational households of 2 or 3 generations, 50% speak other than English in the household, at least 85% are high school graduates and the percent of those 65 years and older is similar at 10.5%.

What makes my community special is:

Being from a Compact of Free Association (COFA) nation we are not eligible for programs such as Supplemental Nutrition Assistance Program (SNAP), Temporary Assistance for Needy Families (TANF), Supplemental Security Income (SSI), and Covid-19 Funeral Assistance grants. Native Hawaiian Pacific Islander (NHPI) data has yet to be disaggregated for many service providing agencies so we are not lumped into the Asian-Pacific category where the special needs specifically for our Marshallese communities are over-shadowed by the larger population. We ask for continual support of the Compact Impact Fairness Act as we push forward through the pandemic.

In conclusion:

Attachment B

Our roots lie here in Costa Mesa; it is here that many of our social events; church gatherings and outreach work exist. It is in Costa Mesa that four to five generations of Marshallese flourish and it is here that we hope to build the capacity to better assist ourselves.

Komol tata, Thank you.

Kelani Silk

Pacific Islander Health Partnership

ORAL TESTIMONY (OCBOS District 2, COSTA MESA, AUGUST 12, 2021)

ORAL TESTIMONY (AUGUST 4 OCBOS COI PUBLIC HEARING)

Hi, my name is Dulce Saavedra, I was born and raised in Santa Ana. I am part of Resilience OC. Resilience OC is an organization working to build leadership of color that works towards community transformation. We have worked for the past 10 years to bring attention to and tackle the issues that have plagued our communities through mentorship, leadership programming, participatory research, community organizing, and advocacy. As part of our organizing and advocacy, we are a member of the People's Redistricting Alliance, a coalition of 16 community-based organizations established to promote a greater community voice in statewide and local redistricting processes here in Orange County.

Our communities of interest include the Latinx community, disenfranchised communities of color, youth, first-generation immigrants, limited-English speakers, and low-income workers.

My community should be centered because we face challenges associated with social and economic status, access to affordable housing, and language access. Most of the youth population are children and teens who rely on free or reduced school lunches. In addition, our community lives in fear of law enforcement - dealing with issues such as deportation, detention, ICE, juvenile justice, and probation.

Our communities live in fear of law enforcement, immigration and the consequences of contact with the criminal legal system. According to the [Vera Institute of Justice](#), 4 out of 5 children have 1 immigrant parent in Santa Ana and 102,015 residents are vulnerable to deportation proceedings. Our communities face daily consequences by the entanglement associated with law enforcement and the immigration system such as Celia has been experiencing for the past decade:

Celia came in contact with law enforcement over a decade ago when she stepped inside a phone company to pay an overdue bill and ensure the services were not terminated. She left her twin infant daughters in the car for a moment, just enough time for a passerby to see the children unattended and call the police. As a result, Celia was arrested, released on bail, and then immediately apprehended by ICE and incarcerated in immigration detention, thus beginning her long battle for her freedom.

[*Voice of OC: Gonzalez and Anda: Community Members Continue to Support Celia's Fight to Remain Free!*](#)

According to the [Conditions of Children in Orange County](#) report, Santa Ana and West Anaheim have one of the largest dropout rates in OC, with both cities exceeding over 5%. Dropout rates for the 2019 school year continued to be highest among Black/African American students (9.9%), followed by Hispanic/Latino (7.2%), American Indian/Alaska Native (6.1%). Our communities are in need of competent culturally aware and transformative resources and representation to improve these outcomes. Youth with real representation could live, thrive, and transform their communities.

This redistricting process will move closer to equitable representation where community voices around the issues that we highlighted can create solutions such as access to public programs and supportive resources catered to our communities and our complex needs.

In conclusion, Santa Ana should be kept together in one supervisorial district to ensure access to public programs and supportive resources for immigrant communities. We believe a federal Voting Rights Act district is centered in Santa Ana. Thus, Santa Ana should be drawn with similar communities such as West Anaheim.

Thank you.

ORAL TESTIMONY (AUG 11 OCBOS COI PUBLIC HEARING)

Good Afternoon, my name is Hina Ahmad and I am the Program Manager of the South Asian Network. Our organization provides culturally and linguistically sensitive direct services to the South Asian community in the areas of healthcare access, civil and immigrant rights, and gender based violence. We are also working on redistricting as a member of the People's Redistricting Alliance.

My community of interest is the South Asian community. It is diverse in culture, language and faith, and is integral to the community at large. Our community gathers in times of celebration and times of advocacy. They are a community that shares resources across the board. The South Asian community is also diverse in its socioeconomic status, education levels, and immigration status. Many South Asians immigrated to this country, seeking asylum, seeking opportunity, and have since built strong ties with local communities. The South Asian community in Southern California is bound together by a shared history and geography.

My community is located near the many faith based institutions that serve the region, including the Buena Park Gurdwara on Orangethorpe and Knott and the Islamic Center of Orange County on State College Blvd. There are South Asian grocery stores and restaurants located near many of these religious institutions as many members of our community live near their local religious institution, many of these institutions are gathering places and community centers for our community members.

Buena Park, Fullerton, and West Anaheim have similar language capacities, faith, socioeconomic status, countries of origin, education, immigration status, and more. The temples and places of worship in Buena Park, Fullerton and West Anaheim have continued to embrace the community around them and provide resources to their neighbors, regardless of ethnic backgrounds or religious affiliations. These communities should be kept together in the same interest. With common interest, the communities in these cities continue to care deeply for one another.

It is important that the voices and needs of the South Asian community are heard and understood by elected officials. South Asians are often perceived as affluent professionals. Yet many South Asians are living in poverty, hiding in the shadows, fearful of alienating immigration policies, unable to access resources due to limited language capacities. The COVID-19 pandemic highlighted what many South Asians know - we need in language resources to access support like healthcare access, financial support, public health education, community and mental health support, and so much more.

In conclusion, it is important that the South Asian community be taken into consideration in the new district maps by keeping Buena Park, Fullerton, and West Anaheim together in one supervisorial district. Our community, like many other communities, works together to support one another, share resources, and advocate for needs. It is important that these communities be kept together, to empower their voices, and to continue building these strong ties. Thank you.

Written Testimony

I am Taavi Kaskla, a resident of Garden Grove. I am writing to you today as a lifetime resident of Orange County as well as a union representative for United Domestic Workers (UDW), the union that represents In-Home Supportive Service (IHSS) providers. UDW is a member of the People's Redistricting Alliance in order to promote a greater community voice during this redistricting process.

Describe your community by stating your shared interests and your shared characteristics. What connects your community together? This can include your community's social and economic demographics, narratives about your community's history and culture, or anything else.

My community is:

In-Home Supportive Service (or IHSS) providers are essential to our county because they allow people with disabilities to live in their own homes and communities with dignity. There are around 27,000 IHSS providers in Orange County. That number is only going up as our population ages and will need extra assistance and support. UDW asks that during this redistricting process we keep the large community of IHSS providers and the people who they care for in mind.

What are the streets or boundaries that mark your community's borders? What are the significant landmarks: rivers, parks, shopping areas, historic sites, etc.? What are the gathering places and service providers: business districts, schools, community centers, religious places, and social service agencies? Do the current political district boundaries divide your community? Or do they keep your community together?

My community is located:

It is admittedly difficult to pinpoint a specific community or neighborhood where IHSS providers live because they live in all parts of the county. IHSS providers care for a wide range of people, from children with developmental complications, friends who have been disabled, to the elderly with failing health. Most IHSS providers take care of their family members and live together with them. Because there are thousands of such family homecare providers scattered across the county, it is very likely that you have one living in your neighborhood. IHSS providers who do not live with their clients commute all over the county to work.

I want to recognize and emphasize that IHSS providers can come from all ethnic backgrounds, income levels, and community groups. IHSS providers tend to be from middle and low income families, but this is not a hard-set rule. On top of that, a significant number of IHSS providers belong to the Latinx communities in Santa Ana and Anaheim, the Vietnamese communities in Garden Grove and Westminster, and Korean communities in Buena Park and Cypress. For this reason, I want you to consider the middle and low income families who live in these respective communities during redistricting.

Provide a description of how your community is similar to the communities and neighborhoods around

My community is similar to the following neighborhoods:

Provide a description of how your community is different from communities and neighborhoods around.

My community is different from the following neighborhoods:

Highlight community issues and histories (in personal stories, if possible) that help demonstrate the importance of having elected officials who understand and respond to community needs. Share stories and data about community concerns to show how you feel your voices have been heard, or haven't been heard.

What makes my community special is:

It is imperative that new district maps reflect fair and equitable demographics. We highly encourage you to create districts that uplift these communities instead of disenfranchising them. We would like to see the Latinx communities in the cities of Santa Ana and Anaheim used to create Voting Rights Act districts as much as possible. The Vietnamese communities in Garden Grove and Westminster should be kept together in your maps. We also ask to keep the Korean community in Buena Park and Cypress together.

Respecting these Voting Rights Act requirements and communities of interest will make it more likely for elected officials to better represent our members.

Emphasize why it's important for your community to be kept together in the new district maps.

In conclusion:

Having elected officials who listen to our IHSS community is crucial because the IHSS program is funded partly by the county and partly by the state. When elected officials do not support the IHSS system and threaten cuts to the program, IHSS providers and the loved ones they care for suffer. UDW is participating in and watching this redistricting process to make sure that new districts are in the best interest of our union members and Orange County IHSS providers.

Finally, we thank the CCRC for being open and transparent so that we can participate in these hearings.

ORAL TESTIMONY (AUGUST 4 OCBOS COI PUBLIC INPUT HEARING)

WRITTEN TESTIMONY

Dear members of the Board and redistricting staff,

My name is Vincent Tran. I am the Community Engagement Coordinator for VietRISE, a non-profit organization based in Garden Grove, advancing social justice and building power for working class Vietnamese and immigrant communities. We build leadership and create systemic change through organizing, narrative change, cultural empowerment, and civic engagement. As part of the People's Redistricting Alliance, VietRISE continues to actively mobilize and organize our Vietnamese community members to participate in statewide and local redistricting efforts.

Our communities of interest include the Vietnamese and broader Southeast Asian communities. Orange County is home to the largest Vietnamese population in the world outside of Viet Nam. Our communities have shared experiences associated with being both low-income and immigrants and refugees and face related challenges like access to affordable housing, with many living in non-traditional housing and mobile homes. According to the US Census, over 60% of the Vietnamese community countywide and over 70% of the Vietnamese in the city of Westminster are foreign born; thus, they face many challenges including language accessibility, access to mental health care, and immigration services.

Our communities of interest are primarily located in the cities of Garden Grove, Westminster, and Fountain Valley. They are similar to both the Korean community in West Garden Grove.

In conclusion, our community of interest is the Vietnamese community, whose boundaries cross city lines, especially between the cities of Garden Grove, Westminster, and Fountain Valley. It is aligned with other low-income, immigrant, and refugee communities, as well as those who face challenges associated with access to affordable housing. We ask that you keep these areas together as you draw new supervisor supervisorial districts in Orange County. We also believe a federal Voting Rights Act district centered in Santa Ana will be required for the Latinx community and that creating that district might require separating Santa Ana from Westminster and splitting Garden Grove. Doing so will create opportunities for both communities to have a greater voice in county government. Thank you.