

# Attachment D: Redistricting Map Proposal Public Comment

Received November 1, 2021 – November 8, 2021 Noon

For a complete list of all public comments received please visit –  
[www.ocgov.com/redistricting](http://www.ocgov.com/redistricting)

## Osborn, Rachael

---

**From:** Prinsky, Lorraine <lprinsky@fullerton.edu>  
**Sent:** Monday, November 08, 2021 11:54 AM  
**To:** 2021 Orange County Redistricting  
**Subject:** I support Maps 5 and 2A

**Follow Up Flag:** Flag for follow up  
**Flag Status:** Completed

**Attention:** This email originated from outside the County of Orange. Use caution when opening attachments or links.

Please keep Costa Mesa together. I support Maps 5 and 2A.

Lorraine

\*\*\*\*\*

Lorraine Prinsky, Ph.D, Trustee  
Coast Community College District  
Professor Emeritus, CSUF  
[www.lorraineprinsky.com](http://www.lorraineprinsky.com)

\*\*\*\*\*



**Osborn, Rachael**

---

**From:** Daryl Williams <williamshadden@hotmail.com>  
**Sent:** Monday, November 08, 2021 11:43 AM  
**To:** 2021 Orange County Redistricting  
**Subject:** Redistricting Maps

**Follow Up Flag:** Flag for follow up  
**Flag Status:** Completed

Attention: This email originated from outside the County of Orange. Use caution when opening attachments or links.

Keep Costa Mesa united. I support maps 2A and 5.

Daryl Williams  
williamshadden@hotmail.com  
516 B Poinsettia Ave  
Newport Beach, CA 92625  
Sent from my iPhone

**Osborn, Rachael**

---

**From:** Deborah Newquist <debnewquist@gmail.com>  
**Sent:** Monday, November 08, 2021 11:39 AM  
**To:** 2021 Orange County Redistricting  
**Subject:** Redistricting Comment

**Follow Up Flag:** Follow up  
**Flag Status:** Completed

**Attention:** This email originated from outside the County of Orange. Use caution when opening attachments or links.

I am a resident of Orange County. My comment about the redistricting proposals are:

**Keep Costa Mesa United” I support Maps 5 and 2A**

Thank you,  
Deborah Newquist  
20 Urey Court  
Irvine, CA 92617

Sent from my iPhone

**Osborn, Rachael**

---

**From:** Jaime Kauffman Palumbo <Jaime@pmdl.me>  
**Sent:** Monday, November 08, 2021 11:37 AM  
**To:** 2021 Orange County Redistricting  
**Subject:** Redistricting

**Follow Up Flag:** Follow up  
**Flag Status:** Completed

Attention: This email originated from outside the County of Orange. Use caution when opening attachments or links.

Hello,

I am a resident of Huntington Beach and would like to voice my opinion on the possible maps that were released. Please keep Costa Mesa united. I am in favor of maps 5 and 2A.

Thank you,  
Jaime Palumbo

**Osborn, Rachael**

---

**From:** Cindy Hadden <cehadden@hotmail.com>  
**Sent:** Monday, November 08, 2021 11:34 AM  
**To:** 2021 Orange County Redistricting  
**Subject:** Redistricting Maps

**Follow Up Flag:** Follow up  
**Flag Status:** Completed

Attention: This email originated from outside the County of Orange. Use caution when opening attachments or links.

Keep Costa Mesa United. I support maps 5 and 2A.

Cindy Hadden  
516 Poinsettia Ave  
Corona Del Mar, CA 92625  
cehadden@hotmail.com

Sent from my iPad

**Osborn, Rachael**

---

**From:** Michele Mullen <mullen.michele@gmail.com>  
**Sent:** Monday, November 08, 2021 11:29 AM  
**To:** 2021 Orange County Redistricting  
**Subject:** Redistricting

**Follow Up Flag:** Follow up  
**Flag Status:** Completed

Attention: This email originated from outside the County of Orange. Use caution when opening attachments or links.

Good Afternoon,  
Please Keep Newport Beach and Costa Mesa United!  
I support Maps 5 & 2A.  
Thank you,  
Michele Mullen  
Costa Mesa Resident

Sent from my iPhone

**Osborn, Rachael**

---

**From:** Margie Sampson <cindertoad@gmail.com>  
**Sent:** Monday, November 08, 2021 11:27 AM  
**To:** 2021 Orange County Redistricting  
**Subject:** Maps

**Follow Up Flag:** Follow up  
**Flag Status:** Completed

**Attention:** This email originated from outside the County of Orange. Use caution when opening attachments or links.

Keep Costa MesaUnited! I support Maps 5 and 2A!



**Osborn, Rachael**

---

**From:** lindaklaw (null) <lindaklaw@aol.com>  
**Sent:** Monday, November 08, 2021 11:06 AM  
**To:** 2021 Orange County Redistricting  
**Subject:** Keep Costa Mesa United

**Follow Up Flag:** Follow up  
**Flag Status:** Completed

Attention: This email originated from outside the County of Orange. Use caution when opening attachments or links.

Please keep Costa Mesa United. I support maps 5 an 2A

Sent from my iPhone

**Osborn, Rachael**

---

**From:** Cathey Ryder <the4ryders@gmail.com>  
**Sent:** Monday, November 08, 2021 11:05 AM  
**To:** 2021 Orange County Redistricting  
**Subject:** Costa Mesa Together

**Follow Up Flag:** Follow up  
**Flag Status:** Completed

Attention: This email originated from outside the County of Orange. Use caution when opening attachments or links.

Keep Costa Mesa United:  
I support Maps 5 and 2A

Costa Mesa Homeowner

Sent from my iPhone

**Osborn, Rachael**

---

**From:** Susan Lew <bucketsue@gmail.com>  
**Sent:** Monday, November 08, 2021 10:52 AM  
**To:** 2021 Orange County Redistricting  
**Subject:** Support for Maps 5 and 2A

**Follow Up Flag:** Follow up  
**Flag Status:** Completed

**Attention:** This email originated from outside the County of Orange. Use caution when opening attachments or links.

Dear County Redistricting Decisionmakers,  
Please Keep Costa Mesa United. Please support Maps 5 and 2A.

Thank you!  
Susan Lew

**Osborn, Rachael**

---

**From:** Betty Chu <bchu4mp09@yahoo.com>  
**Sent:** Monday, November 08, 2021 10:52 AM  
**To:** 2021 Orange County Redistricting  
**Subject:** Redistricting Proposals 2, 4 and 5  
**Attachments:** Attachment 1 Equal Population Districts .pdf; EXHIBIT 1 POPULATION DEVIATION COMPARISONS.xlsx. copy.pdf; ATTACHMENT 2 HISPANIC AND ASIAN POPULATION DISTRICTS.pdf; EXHIBIT 2 HISPANIC AND ASIAN COMPARISONS copy.pdf; EXHIBIT 3 Other Comparisons copy.pdf

**Follow Up Flag:** Follow up  
**Flag Status:** Completed

**Attention:** This email originated from outside the County of Orange. Use caution when opening attachments or links.

**Chairman Do, Vice Chairman Chaffee and Supervisors,**

**I respectfully each of you to adopt Proposal 2 as discussed on November 2 for each and all, of the following reasons:**

**a. Proposal 5 violates the requirements, priorities and intent of the U.S. Constitution, Federal Voting Rights Act, California Constitution and Elections Code section 21,500 by unfairly diluting the vote of Asians to preclude their election of a representative of their choice.**

**b. Proposal 2 is the best in compliance with the requirements, priorities and intent of the U.S. Constitution, Federal Voting Rights Act, California Constitution, and Elections Code section 21,500.**

**c. Proposal 2 is the only map submitted with population numbers and percentages that deviate the least from the target population and is the only map that creates the best Majority Hispanic Minority Voting District and the best Influence Asian Voting District.**

**d. Proposal 2 is the fairest geographic representation of the three major diverse racial/ethnic populations and the current trending demographics in Orange County.**

**e. Proposal 2 creates the best and strongest Majority Minority Voting District. Proposal 2, District 1 has the highest population count Hispanics, more than the corresponding District 2 in Proposal 4 and District 5 in Proposal 5. Proposal 2 ties with Proposal 5 with the largest Hispanic percentage.**

**f. Proposal 2, District 4 has the best Influence Asian Voting District. Both the largest percentage and highest population count of contiguous Asians, significantly more than Proposals 4 and 5.**

**g. Proposal 5 has the weakest Influence Asian District (32.2%) which is sacrificed to create a 67.9% Majority Hispanic Minority district, the highest percentage tied with Proposal 4, and sacrificed to create the strongest Influence Hispanic Voting District at 45.5%. The Influence Asian District is adjacent to both of these Hispanic districts.**

**h. Failure to adopt Proposal 2 will have a substantial negative impact on the rights of Asians to fair representation as protected by the U. S. and California Constitutions, the Federal Voting Rights Act and the California Elections Code.**

**i. Adoption of Proposals 4 and 5 will adversely affect the Constitutional equal opportunity rights of an increasing Asian population to participate in the political process for the next ten years.**

**j. Adoption of Proposals 4 and 5 will deny a significant racial minority “from voting a representative of their choice” contrary to the protections afforded under the Constitutions and Laws of the United States and California.**

**k. Proposal 2 includes all of Santa Ana and Little Arabia and parts of Garden Grove in the Majority Minority Voting District as desired by the speakers on November 4 supporting Proposals 4 and 5.**

**Please vote for Proposal 2, as presented on November 2, 2021, the map that is the redistricting plan most and best “focused on equal representation and keeping communities of interest together”. Voting for Proposal 2 avoids the perception of self-interest since it strengthens the Hispanic Majority Minority Voting District, gives the right for fair representation to the Asians and similarly includes the cities in adjacent districts desired by proponents of the other maps.**

**Adoption of any map other than Proposal 2 denies the right of Asians to participate in the political process, gives the appearance of a conflict of interest, self-interest and political preferences and is Anti-Asian discrimination in violation of the federal and state Constitutions, Voting Rights Act and Elections code 21,500 et seq.**

**I also support any technical or other changes to Proposal 2 that do not decrease the percentages nor population numbers as reflected by Proposal 2 presented on November 2, 2021.**

**Additional data and analysis supporting Proposal 2 are included in attachments and exhibits. Attachment 1 is additional comments on Equal Population Districts. Exhibit 1 is Population Deviation Comparison Chart. Attachment 2 is additional comments on Hispanic and Asian Districts. Exhibit 2 is Hispanic and Asian District Comparison Chart. Exhibit 3 is Racial Comparison Chart.**

**Thank you for your consideration in this manner.**

**Respectfully,**

**Betty Chu  
Resident OC District 3  
Chinese American Citizens Alliance**

**of Orange County**  
**Email: bchu4mp09@yahoo.com**

## 2021 1108 CHU REDISTRICTING PROPOSAL

### ATTACHMENT 1: EQUAL POPULATION DISTRICTS

**PROPOSAL 2 IS THE MOST COMPLIANT WITH THE U.S. CONSTITUTION, CALIFORNIA CONSTITUTION, VOTING RIGHTS ACT AND ELECTIONS CODE SECTION 21,500. PROPOSAL 5 IS THE LEAST COMPLIANT.**

Proposal 2 is the fairest and the most compliant map. The most important requirement, Elections Code Section 21,500 (a) (1), requires districts to be “substantially equal in population as required by the United States Constitution”. This requirement protects the right of minorities for “equal opportunity to be part of the political process”. Proposal 2 is the most “substantially equal in population as required by the United States Constitution.

Exhibit 1 is a chart of the population deviation percentage comparisons for each district in the three maps ranked from the smallest to the largest.

Proposal 2 is the most compliant with a low deviation percentage of 1.95%, the least deviation percentage spread of all three Proposals. Proposal 5 is the least compliant with a high of 9.52%, only 0.48% less than the maximum 10% allowed and 7 1/2 times more than Proposal 2. The 3.85% percentage spread deviation of Proposal 4 is still almost twice that of Proposal 2. (Exhibit 1)

The population deviation numerical spread from the lowest number of persons to the highest in Proposal 2 districts is 12,481 persons, the lowest numerical deviation of the three Proposals. Proposal 5 is much less compliant with a spread of 60,768 persons, the largest numerical deviation of the three Proposals.

The Majority Hispanic Minority Voting District is District 1 in Proposal 2, District 2 in Proposal 4, and District 5 in Proposal 5. The Majority Hispanic Minority Voting District in Proposal 4 has the lowest deviation percentage at -0.56% and the lowest numerical deviation, 3,597 persons less than the target population per district. The corresponding district in Proposal 2 is very similar to Proposal 4, the deviation percentage at -0.58% and 3,697 persons less than the target population per district. The greatest deviation is in Proposal 5 with a population of 29,951 less than the target population or -4.69% percentage deviation.

The Influence Asian Voting District is District 4 in Proposal 2, District 1 in Proposal 4, and District 1 in Proposal 5. Again, Proposal 5 has the largest

deviation percentage (-4.49%) and number (29,951), significantly more than Proposals 2 and 4. Again, Proposals 2 and 4 are at -0.89%, 5,699 and -0.56%, 3,597, respectively.

The districts in Proposal 2 overall have the least percentage and numerical deviation at 1.95% and 12,481. The deviations in Proposal 4 are almost double at 3.85% and 24,562. Proposal 5 has the greatest deviations, 9.52% and 60,768, almost 5 times the deviations in Proposal 2. Proposal 2 is the most compliant with Elections Code and the Constitutions as the districts are the most equal in representation.



## 2021 1108 Chu Redistricting Proposals

### ATTACHMENT 2: HISPANIC AND ASIAN POPULATION DISTRICTS

#### 1. PROPOSAL 5 VIOLATES THE PROVISIONS, PRIORITIES AND INTENT OF THE U.S. CONSTITUTION, CALIFORNIA CONSTITUTION, VOTING RIGHTS ACT AND ELECTIONS CODE SECTION 12, 500 ET SEQ.

Proposal 5 has the lowest Asian population numbers and percentages in the Influence Asian Voting District. The Asian population is divided in smaller percentages over different districts in Proposal 5. The district divisions in Proposal 5 resulted in the weakest Influence Asian Voting District.

The creation of Major Minority Voting District 5 with 67.9% Hispanics and Influence Hispanic Voting District 4 with 45.5% weakened the abutting Influence Asian Voting District in Proposal 5 to only 32.2%. The sacrifice of the Asian population to add to the Majority Hispanic Minority Voting District and/or to the Influence Hispanic Voting District adversely impacts the ability of Asians to participate fairly and equally in the election process.

This is particularly true when coupled with the largest population percentage and numerical deviations of Proposal 5. This clearly results in Anti-Asian discrimination prohibited under the U.S. Constitution, the California Constitution, Voting Rights Act and Election Code 21,500 et seq.

Alternatively, the strongest Majority Hispanic Minority Voting District 1 is created in Proposal 2 District 4 adjacent to the strongest Influence Asian Voting District. Although the percentages of Hispanics in the Majority Hispanic Minority Voting District in Proposals 2 and 5 are the same, the one in Proposal 2 has the largest population number, 431,360 Hispanics, 4.3% or 17,960 more than the 431,400 Hispanics in Proposal 5 and 3% or 16,290 more than the 418,822 Hispanics in Proposal 5. Proposal 2 is the only map with the strongest Majority Hispanic Minority District adjacent to the strongest Influence Asian Voting District.

Proposal 5 will have a substantial negative impact on the rights of Asians to fair political representation for the next ten years. To the contrary, Proposal 2 strengthens the Influence Asian Voting District without adversely affecting the Majority Hispanic Minority Voting District.

#### 2. PROPOSAL 2 IS THE FAIREST AND MOST COMPLIANT WITH THE REQUIREMENTS, PRIORITIES AND INTENT OF THE U.S. AND CALIFORNIA CONSTITUTIONS, VOTING RIGHTS ACT AND ELECTIONS CODE 21,500

Proposal 2 is the fairest and the most compliant map with the provisions, priorities and intent of the Federal and California Constitutions, Voting Rights Act and Election Code section 21,500.

The most important requirement, Elections Code Section 21,500 (a) (1), requires districts to be “substantially equal in population as required by the United States Constitution”. This requirement protects the right of minorities for “equal opportunity to be part of the

political process”. Proposal 2 is the most “substantially equal in population as required by the United States Constitution. Exhibit 1 includes a chart of the deviation spreads for each district in the three maps from low to high.

All of the districts in Proposal 2 have numbers and percentages that deviate the least from the target population and at the same time, creates the best Majority Hispanic Minority Voting District and the best Influence Asian Voting District.

The population deviation spread of Proposal 2 is the most compliant with a low deviation percentage of 1.95%. Proposal 5 is the least compliant with a high of 9.52%. The population deviation spreads as shown in numbers under the target population in Proposal 2 is minus 5,699. Proposal 5 is much less compliant with a minus spread of 29,951. The spread over the target population in Proposal 2 is plus 6,782. Again Proposal 5 is substantially less compliant with a sizeable population plus of 30,817.

Both Proposals 2 and 5 have the least split cities after the technical boundary adjustments. Proposal 4 will have almost twice as many split cities. The splits of Fountain Valley, Fullerton, Garden Grove and Irvine has a negative impact on the Asian communities of interest.

### **3. PROPOSAL 2 HAS THE STRONGEST AND LARGEST MAJORITY HISPANIC MINORITY VOTING DISTRICT**

The best and strongest Majority Minority Voting District is in Proposal 2. Proposal 2, District 1 has the highest population count of Hispanics, more than the corresponding District 2 in Proposal 4 and District 5 in Proposal 5. Proposal 2 ties with Proposal 5 on the largest Hispanic percentage.

These higher population percentage and numbers in Proposal 2 strengthen the Majority Hispanic Minority Voting District over those in Proposals 4 and 5.

Proposal 2, District 1 includes 431,360 Hispanics, the highest number of Hispanic populations, 12,538 more than Proposal 4. Although the population percentages in Proposals 2 and Proposal 5 are the same and are the largest percentages as compared to Proposal 4, Proposal 2 has 17,960 more Hispanics than Proposal 5.

Proposal 2 creates the strongest Majority Hispanic Minority Voting District 1 with the largest population of Hispanics and has an additional two Hispanic districts of influence. Proposal 4 also has a Majority Hispanic Minority District but only one Influence Hispanic District.

The Majority Hispanic Minority Voting District in Proposal 2 includes all of Santa Ana and Little Arabia and parts of Garden Grove as desired by the speakers on November 4 supporting Proposals 4 and 5.

### **4. PROPOSAL 2 DISTRICT 4 IS THE STRONGEST AND LARGEST INFLUENCE ASIAN VOTING DISTRICT**

Proposal 2 is the only one that strengthens both the Majority Minority District and the Influence Voting District. Proposal 2 is the most compliant with the provisions and intent

of the Federal and California Constitutions, the Voting rights Act and Election Code section 21,500. All of the districts in Proposal 2 have numbers and percentages that deviate the least from the target population and at the same time, creates the best Majority Hispanic Minority Voting District and the best Influence Asian Voting District.

Proposal 2, District 1 includes Santa Ana, Little Arabia, and parts of Garden Grove in a single district as desired by the speakers last week in support of Proposals 4 and 5.

Proposal 2 is the only Proposal that strengthens both the Majority Minority Voting District and the Influence Voting District in population numbers and percentages.

Proposal 2 is the most compliant with the provisions, priorities and intent of the Federal and California Constitutions, the Voting rights Act and Election Code section 21,500. All of the districts in Proposal 2 have numbers and percentages that deviate the least from the target population and at the same time, creates the largest Majority Hispanic Minority Voting District and the best Influence Asian Voting District.

Proposal 2 has the highest percentages and the largest number of Asians in District 4 to form the strongest Asian Influence Voting District. The Asian Influence Voting Districts in Proposals 4 and 5 are significantly lower in percentages and numbers than Proposal 2.

Proposal 2, District 4 includes 243,208 (38.4%) Asians, the largest of the Influence Asian Voting Districts submitted. The Influence Asian Voting District in Proposal 4 is populated by 226,918 Asians, 16,290 and 7% less than Proposal 2. The Influence Asian Voting District in Proposal 5 has the least Asian Population, 196,491 or 23.7% less than that of Proposal 2.

5. Proposal 2 is the most compliant with the provisions and intent of the Federal and California Constitutions, the Voting rights Act and Election Code section 21,500. All of the districts in Proposal 2 have numbers and percentages that deviate the least from the target population and at the same time, creates the best Majority Hispanic Minority Voting District and the best Influence Asian Voting District.

5. THE ELIMINATION OF PROPOSAL 2 WILL HAVE SEVERE ADVERSE IMPACTS ON THE RIGHTS OF ASIANS TO PARTICIPATE IN THE POLITICAL PROCESSES FOR THE NEXT TEN YEARS.

Proposal 5 will have drastic adverse impacts on the rights of Asians to elect a representative of their choice as guaranteed by the federal and state Constitutions and laws. Although not as drastic, Proposal 4 will still lessen the opportunities for Asians to be fairly represented.

The Influence Voting Districts in Proposals 4 and 5 are significantly lower in percentages and numbers than Proposal 2. This violates the provisions, priorities and intent of the U.S. and California Constitutions, the Voting Rights Act and Elections Code.

Proposal 2 creates the strongest Majority Minority District 1 with the largest population of Hispanics and has two Hispanic districts of influence. Proposal 4 also has a Majority Hispanic Minority District and only one Influence Hispanic District.

**On the other hand, the Asians in Proposal 5, the lowest in numbers and percentages, are spread over different districts in Proposal 5. The creation of Major Minority District 5 with 67.9% Hispanics and Influence Hispanic District 4 with 45.5% weakened the abutting Influence Asian District to 32.2%. This clearly presents a perception of Anti-Asian discrimination prohibited under the U.S. Constitution, the California Constitution, Voting Rights Act and Election Code 21,500 et seq.**

**The weakened Influence Asian District was sacrificed to create a Majority Minority District (District 5) of 67.9% and the strongest Influence Hispanic District (District of 45.5%) both abutting the Influence Asian District**

**The increased Hispanic population included in Proposal 2 is not detrimental to the Hispanics' rights for fair representation and in fact, strengthens the Majority Minority Voting Rights District.**

**Proposal 2 is the only one that strengthens both the Majority Minority District as well as that of the Influence Voting District.**

**The elimination of Proposal 2 will discriminate against the Asians contrary to the provisions and intent of the U.S. and California Constitutions and Elections Code 21,500. Dilution of the Asian voices for the next ten years is not in the best interest of Orange County and is tantamount to deletion of the Asian voices.**

**The elimination of Proposal 2 containing increased percentages and numbers of the Hispanic population will deprive Orange County Hispanics of a stronger Majority Minority District.**

**The percentage and numerical differences in Proposals 4 (District 2) and 5 (District 5) both adversely affect the Asian community. Both District 2, Proposal 4, and District 5, Proposal 5 abut to District 4, Proposal 2.**

**On the other hand, the percentage and numerical difference strengthens the Hispanic Majority Minority Voting District and therefore, does not have a negative affect on the Hispanic community.**

## 2021 1109 CHU REDISTRICTING PROPOSALS

### EXHIBIT 1      POPULATION DEVIATION CHART ELECTIONS CODE 21500: SUPERVISORIAL DISTRICTS MUST BE SUBSTANTIALLY EQUAL IN POPULATION

POPULATION DEVIATION COMPARISONS FROM LOW TO HIGH					
PROPOSAL 2			PROPOSAL 4		
DISTRICTS	NUMBER	PERCENT	DISTRICT	NUMBER	PERCENT
DISTRICT 2	96	0.02%	DISTRICT 5	1,471	0.23%
DISTRICT 3	2,518	0.39%	DISTRICT 1 **	-3,597	-0.56%
DISTRICT 1 *	-3,697	-0.58%	DISTRICT 2 *	-5,358	-0.84%
DISTRICT 4 **	-5,699	-0.89%	DISTRICT 4	-8,539	-1.34%
DISTRICT 5	6,782	1.06%	DISTRICT 3	16,023	2.51%
LOWEST	-5,699	-0.89%		-8,539	-1.34%
HIGHEST	6,782	1.06%		16,023	2.51%
# SPREAD	12,481			24,562	
% SPREAD		1.95%			3.85%
* Majority Hispanic Minority Voting District					
** Influence Asian Voting District					

PROPOSAL 2			PROPOSAL 5		
DISTRICTS	NUMBER	PERCENT	DISTRICT	NUMBER	PERCENT
DISTRICT 2	96	0.02%	DISTRICT 4	1,721	0.27%
DISTRICT 3	2,518	0.39%	DISTRICT 2	26,065	4.08%
DISTRICT 1 *	-3,697	-0.58%	DISTRICT 1 **	-28,652	-4.49%
DISTRICT 4 **	-5,699	-0.89%	DISTRICT 5 *	-29,951	-4.69%
DISTRICT 5	6,782	1.06%	DISTRICT 3	30,817	4.83%
LOWEST	-5,699	-0.89%		-29,951	-4.69%
HIGHEST	6,782	1.06%		30,817	4.83%
# SPREAD	12,481			60,768	
% SPREAD		1.95%			9.52%
* Majority Hispanic Minority Voting District					
** Influence Asian Voting District					

## 2021 1108 CHU REDISTRICTING PROPOSALS

EXHIBIT 2			HISPANIC AND ASIAN POPULATION COMPARISONS					
PROPOSAL 2			PROPOSAL 4			PROPOSAL 5		
HISPANIC			HISPANIC			HISPANIC		
DISTRICT	NUMBER	PERCENT	DISTRICT	NUMBER	PERCENT	DISTRICT	NUMBER	PERCENT
District 1	431,360	67.9%	District 2	418,822	66.1%	District 5	413400	67.9%
PROPOSAL 2			PROPOSAL 4			PROPOSAL 5		
ASIAN			ASIAN			ASIAN		
DISTRICT	NUMBER	PERCENT	DISTRICT	NUMBER	PERCENT	DISTRICT	NUMBER	PERCENT
District 4	243,208	38.4%	District 1	226,918	35.7%	District 1	196,491	32.2%%

<b>ASIAN DISTRICT DIFFERENCES PROPOSAL 2 AND 5</b>				
<b>NUMBER</b>			<b>PERCENTAGE</b>	
District 4	243,208	Proposal 2	196,491 divided by 46,717 = 23.77%	
District 1	196,491	Proposal 5		
	46,717	Difference		

## 2021 1108 CHU REDISTRICTING PROPOSALS

<b>EXHIBIT 3 NON-HISPANIC WHITE DISTRICT COMPARISONS</b>								
<b>NON-HISPANIC WHITE DISTRICT COMPARISONS</b>								
<b>PROPOSAL 2</b>			<b>PROPOSAL 4</b>			<b>PROPOSAL 5</b>		
<b>DISTRICT</b>	<b>NUMBER</b>	<b>PERCENT</b>	<b>DISTRICT</b>	<b>NUMBER</b>	<b>PERCENT</b>	<b>DISTRICT</b>	<b>NUMBER</b>	<b>PERCENT</b>
District 1*	83,791	13.2%	District 2*	117,297	18.5%	District 5*	92,813	15.2%
District 2	373,482	58.5%	District 5	352,510	55.1%	District 2	311,408	46.9%
District 3	250,599	39.1%	District 4	195,137	31.0%	District 4	159,011	24.8%
District 4**	163,660	25.9%	District 1*	175,380	27.6%	District 1*	233,495	38.3%
District 5	328,596	50.9%	District 3	359,804	55.0%	District 3	403,401	60.3%
* Majority Minority District								
** Influence Asian District								

<b>ASIAN COMPARISONS</b>								
<b>PROPOSAL 2</b>			<b>PROPOSAL 4</b>			<b>PROPOSAL 5</b>		
<b>ASIAN</b>			<b>ASIAN</b>			<b>ASIAN</b>		
<b>DISTRICT</b>	<b>NUMBER</b>	<b>PERCENT</b>	<b>DISTRICT</b>	<b>NUMBER</b>	<b>PERCENT</b>	<b>DISTRICT</b>	<b>NUMBER</b>	<b>PERCENT</b>
District 1*	92,057	14.5%	District 2*	68,474	10.8%	District 5*	78,003	12.8%
District 2	91,998	14.4%	District 5	131,847	20.6%	District 2	186,613	28.1%
District 3	116,578	18.2%	District 4	150,712	23.9%	District 4	149,780	23.4%
District 4**	243,208	38.4%	District 1**	226,918	35.7%	District 1**	196,491	32.2%
District 5	155,426	24.1%	District 3	121,316	18.5%	District 3	88,180	13.2%
* Majority Minority District								
** Influence Asian District								

<b>HISPANIC COMPARISONS</b>								
<b>PROPOSAL 2</b>			<b>PROPOSAL 4</b>			<b>PROPOSAL 5</b>		
<b>HISPANIC</b>			<b>HISPANIC</b>			<b>HISPANIC</b>		
<b>DISTRICT</b>	<b>NUMBER</b>	<b>PERCENT</b>	<b>DISTRICT</b>	<b>NUMBER</b>	<b>PERCENT</b>	<b>DISTRICT</b>	<b>NUMBER</b>	<b>PERCENT</b>
District 1*	431,360	67.9%	District 2*	418,822	66.10%	District 5*	413,400	67.9%
District 2	124,451	19.5%	District 5	106,406	16.6	District 2	115,770	17.4%
District 3	232,229	36.2%	District 4	242,771	38.5	District 4	281,323	45.5%
District 4**	189,327	29.9%	District 1*	196,245	30.9%	District 1*	140,330	23.0%
District 5	112,914	17.5%	District 3	126,037	19.3%	District 3	129,452	19.3%
* Majority Minority Hispanic District								
** Influence Asian District								



## Osborn, Rachael

---

**From:** Dennis Bress <dennis@ieei.com>  
**Sent:** Monday, November 08, 2021 10:49 AM  
**To:** 2021 Orange County Redistricting  
**Subject:** "Keep Costa Mesa United" I support Maps 5 and 2A : Dennis Bress

**Follow Up Flag:** Follow up  
**Flag Status:** Completed

**Attention:** This email originated from outside the County of Orange. Use caution when opening attachments or links.

Hello and hope you are well.

I am a resident of Newport Beach, Orange County.

"Keep Costa Mesa United" I support Maps 5 and 2A

Again, I support Maps 5 and 2A

Best regards,  
Dennis Bress  
Newport Beach, Ca (Orange County)  
Tele: 714-878-1276

**Osborn, Rachael**

---

**From:** Susan Tate <state71@gmail.com>  
**Sent:** Monday, November 08, 2021 10:44 AM  
**To:** 2021 Orange County Redistricting  
**Subject:** New maps

**Follow Up Flag:** Follow up  
**Flag Status:** Completed

Attention: This email originated from outside the County of Orange. Use caution when opening attachments or links.

My name is Susan Tate and I live in Newport Coast. I feel strongly that Newport and Costa Mesa should not have their districts split.

I support Maps 5 and 2A.

Susan Tate  
5 Pavona  
Newport Coast, CA 92657

**Osborn, Rachael**

---

**From:** Sue Quam <suequam@gmail.com>  
**Sent:** Monday, November 08, 2021 10:42 AM  
**To:** 2021 Orange County Redistricting  
**Subject:** Keep Costa Mesa United. I support Maps 5 and 2A

**Follow Up Flag:** Follow up  
**Flag Status:** Completed

**Attention:** This email originated from outside the County of Orange. Use caution when opening attachments or links.

**Please Keep Costa Mesa United. I support Maps 5 and 2A . Please vote for us in fair representation. Thank you**  
Sue Ellen Quam  
209 B Avenida Majorca  
Laguna Woods, CA 92637

Sent from my iPhone

**Osborn, Rachael**

---

**From:** Cynthia Blackwell <cindymarye@gmail.com>  
**Sent:** Monday, November 08, 2021 11:22 AM  
**To:** 2021 Orange County Redistricting  
**Subject:** Keep Costa Mesa United

**Follow Up Flag:** Follow up  
**Flag Status:** Completed

**Attention:** This email originated from outside the County of Orange. Use caution when opening attachments or links.

Please use map 2a or 5 for redistributing.  
Michael and Cynthia Blackwell  
--  
Cynthia

**Osborn, Rachael**

---

**From:** Audrey Prosser <prosserga@gmail.com>  
**Sent:** Monday, November 08, 2021 10:19 AM  
**To:** 2021 Orange County Redistricting  
**Subject:** Support Maps 2-A and 5

**Follow Up Flag:** Follow up  
**Flag Status:** Completed

**Attention:** This email originated from outside the County of Orange. Use caution when opening attachments or links.

**Maps 5 and 2-A keeps Costa Mesa United. I endorse Map 2-A and 5.**

My name is Audrey Prosser. I am a resident in what is currently District 2.

**Osborn, Rachael**

---

**From:** lagunabob <lagunabob@cox.net>  
**Sent:** Monday, November 08, 2021 10:17 AM  
**To:** 2021 Orange County Redistricting  
**Subject:** New Supervisor maps

**Follow Up Flag:** Follow up  
**Flag Status:** Completed

**Attention:** This email originated from outside the County of Orange. Use caution when opening attachments or links.

I support keeping Costa Mesa UNITED. Maps 2A and 5 do just that. There is no logical reason to divide Costa Mesa. Maps are not supposed to be partisan or Gerrymandered!!

Laguna Bob

Sent from my Sprint Tablet.

**Osborn, Rachael**

---

**From:** Maggie G <irishmag@yahoo.com>  
**Sent:** Monday, November 08, 2021 10:13 AM  
**To:** 2021 Orange County Redistricting  
**Subject:** BOS redistricting

**Follow Up Flag:** Follow up  
**Flag Status:** Completed

**Attention:** This email originated from outside the County of Orange. Use caution when opening attachments or links.

Do not split Costa Mesa into separate districts. I support Maps 5 and 2A. Thank you.

Maggie Gallagher  
1300 Adams Ave  
Costa Mesa

## Osborn, Rachael

---

**From:** bobhartman <bobhartman@cox.net>  
**Sent:** Monday, November 08, 2021 10:12 AM  
**To:** 2021 Orange County Redistricting  
**Subject:** Redistricting Maps

**Follow Up Flag:** Follow up  
**Flag Status:** Completed

**Attention:** This email originated from outside the County of Orange. Use caution when opening attachments or links.

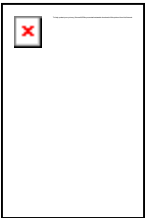
Dear Sirs:

I support keeping Costa Mesa UNITED. Why would that be done? Cities should remain together.

I think maps 5 and map 2A are best for Orange County and for Costa Mesa. Please do not arbitrarily divide Costa Mesa.

Thank you,

Bob Hartman



Bob Hartman  
Laguna Beach, CA 92651



**Osborn, Rachael**

---

**From:** Buffie Channel <hbbuffie@gmail.com>  
**Sent:** Monday, November 08, 2021 9:56 AM  
**To:** 2021 Orange County Redistricting  
**Subject:** New Maps-Keep Costa Mesa United

**Follow Up Flag:** Follow up  
**Flag Status:** Completed

**Attention:** This email originated from outside the County of Orange. Use caution when opening attachments or links.

Re: Redistricting

KEEP COSTA MESA UNITED

SUPPORT MAPS 5 and 2A.

Keep this fair and balanced. Do not break up Costa Mesa.

--

Buffie Channel  
Relocation Consultant  
Quest Relocation Group  
Call/Text: 714-317-3035

**Osborn, Rachael**

---

**From:** Bonnie Eastman <[bonnie@wave4all.org](mailto:bonnie@wave4all.org)>  
**Sent:** Monday, November 08, 2021 9:50 AM  
**To:** 2021 Orange County Redistricting  
**Subject:** redistricting plans

**Follow Up Flag:** Follow up  
**Flag Status:** Completed

**Attention:** This email originated from outside the County of Orange. Use caution when opening attachments or links.

I support maps 2A and 5 for the redistricting plan for Orange County. Keep Costa Mesa and other cities united and undivided wherever possible. Residents of each of our cities have common interests which should be recognized and respected in the election process.

Sincerely,

Bonnie Eastman  
[bonnie@wave4all.org](mailto:bonnie@wave4all.org)  
714-322-9716

**Osborn, Rachael**

---

**From:** Pat Goodman <patgoodman@yahoo.com>  
**Sent:** Monday, November 08, 2021 9:28 AM  
**To:** 2021 Orange County Redistricting  
**Subject:** Redistricting 2021 Support Maps 2A and 5

**Follow Up Flag:** Follow up  
**Flag Status:** Completed

**Attention:** This email originated from outside the County of Orange. Use caution when opening attachments or links.

Dear Orange County Board of Supervisors,

I live in District 2 and I hope that you will commit to keep cities in tact when developing the new supervisorial districts. With this in mind I support maps 2A and 5, keep Costa Mesa intact.

Thank you!

***Patricia Goodman***  
***Huntington Beach, CA 92648***

**Osborn, Rachael**

---

**From:** ladydi8562@aol.com  
**Sent:** Monday, November 08, 2021 9:21 AM  
**To:** 2021 Orange County Redistricting  
**Subject:** KEEP COSTA MESA UNITED

**Follow Up Flag:** Follow up  
**Flag Status:** Completed

**Attention:** This email originated from outside the County of Orange. Use caution when opening attachments or links.

I SUPPORT MAPS 5 AND 2A!!!!

**Osborn, Rachael**

---

**From:** Hank Castignetti <hanksterc@aol.com>  
**Sent:** Monday, November 08, 2021 9:01 AM  
**To:** 2021 Orange County Redistricting  
**Subject:** KEEP COSTA MESA UNITED!!!

**Follow Up Flag:** Follow up  
**Flag Status:** Completed

**Attention:** This email originated from outside the County of Orange. Use caution when opening attachments or links.

I SUPPORT MAPS 5 AND 2A!!!!

**Osborn, Rachael**

---

**From:** Flomama Martin <floseppe@gmail.com>  
**Sent:** Monday, November 08, 2021 8:47 AM  
**To:** 2021 Orange County Redistricting  
**Subject:** I support

**Follow Up Flag:** Follow up  
**Flag Status:** Completed

**Attention:** This email originated from outside the County of Orange. Use caution when opening attachments or links.

AS A 54-YEAR RESIDENT AND VOTER IN COSTA MESA, I SUPPORT REDISTRICTING MAP 2A.

FLORENCE MARTIN  
2442 Andover Pl, Costa Mesa, CA 92626  
949-933-3699

**Osborn, Rachael**

---

**From:** Birdie Reed <birdieuu@gmail.com>  
**Sent:** Monday, November 08, 2021 8:42 AM  
**To:** 2021 Orange County Redistricting  
**Subject:** Keep Costa Mesa United. I support maps 5 and 2a

**Follow Up Flag:** Follow up  
**Flag Status:** Completed

Attention: This email originated from outside the County of Orange. Use caution when opening attachments or links.

Sent from my iPhone

**Osborn, Rachael**

---

**From:** James Meyer <jim.meyer09@gmail.com>  
**Sent:** Monday, November 08, 2021 8:37 AM  
**To:** 2021 Orange County Redistricting  
**Subject:** Fwd:

**Follow Up Flag:** Flag for follow up  
**Flag Status:** Completed

**Attention:** This email originated from outside the County of Orange. Use caution when opening attachments or links.

Jim Meyer

Please

“Keep Costa Mesa United” I support Maps 5 and 2A



**Osborn, Rachael**

---

**From:** Jayme Mekis <jayme.mekis@gmail.com>  
**Sent:** Monday, November 08, 2021 8:36 AM  
**To:** 2021 Orange County Redistricting; James Meyer

**Follow Up Flag:** Flag for follow up  
**Flag Status:** Completed

**Attention:** This email originated from outside the County of Orange. Use caution when opening attachments or links.

Please

“Keep Costa Mesa United” I support Maps 5 and 2A

**Osborn, Rachael**

---

**From:** LISE MILLER <genereaux@aol.com>  
**Sent:** Monday, November 08, 2021 8:26 AM  
**To:** 2021 Orange County Redistricting  
**Subject:** Redistricting

**Follow Up Flag:** Flag for follow up  
**Flag Status:** Completed

Attention: This email originated from outside the County of Orange. Use caution when opening attachments or links.

To Whom It May Concern,

I am a fourth generation Costa Mesa resident that goes back to the days of it being called "Goat Hill. I am appalled and dismayed there is a movement to split up Costa Mesa in the redistricting process.

It is ESSENTIAL that we keep Costa Mesa united and not divided.

I implore you to only consider Maps 5 and 2A!

"Keep Costa Mesa United" I support Maps 5 and 2A

Thank you for keeping redistricting fair and balanced respecting our civic representation in Costa Mesa.

Best,  
Joan Miller

**Osborn, Rachael**

---

**From:** Response@ocgov.com on behalf of OC Clerk of the Board <Response@ocgov.com>  
**Sent:** Monday, November 08, 2021 7:54 AM  
**To:** 2021 Orange County Redistricting  
**Subject:** 2021 Redistricting Idea Form - ONLINE FORM SUBMISSION

**Follow Up Flag:** Flag for follow up  
**Flag Status:** Completed

**Attention:** This email originated from outside the County of Orange. Use caution when opening attachments or links.

Submitted on Mon, 11/08/2021 - 07:53

Submitted by: Anonymous

Submitted values are:

**Name**

Dr. Gerardo de Jesus

**Organization**

Fusion Pastoral Counseling, LLC

**Phone Number**

[4073350483](tel:4073350483)

**Email**

[drjerrydejesus@gmail.com](mailto:drjerrydejesus@gmail.com)

**City/County**

Orlando

**My ideas/comments are as follows**

KEEP MEADOWOODS NEIGHBORHOOD IN ORANGE COUNTY DISTRICT 4  
MY PARENTS AND I HAVE LIVED IN THIS DISTRICT FOR OVER 30 YEARS. WE ARE ACTIVE IN CIVIC ACTIVITIES AND HAVE  
DO HOPE THAT THIS DISTRICT REMAINS AS IS. MAINTAINING A BALANCE IN ETHNIC AND SOCIAL COMPOSITION IS  
ESSENTIAL FOR CITIZENS TO FEEL REPRESENTED.

**Osborn, Rachael**

---

**From:** Lara Horgan <larahorgan@gmail.com>  
**Sent:** Monday, November 08, 2021 7:53 AM  
**To:** 2021 Orange County Redistricting  
**Subject:** Support for Redistricting maps 5 and 2a

**Follow Up Flag:** Flag for follow up  
**Flag Status:** Completed

Attention: This email originated from outside the County of Orange. Use caution when opening attachments or links.

Dear OC Supervisors,

I strongly support maps 5 and 2a. Having worked, shopped and dined in Costa Mesa for the last 30 years, I know that Costa Mesa culturally and socioeconomically distinct from surrounding communities.

Thank you for your attention.

Sincerely,

Lara Horgan  
17 S Peak  
Laguna Niguel CA 92677  
949-933-5272

**Osborn, Rachael**

---

**From:** Roseanne Brown <roseanne@rbimages.com>  
**Sent:** Monday, November 08, 2021 7:51 AM  
**To:** 2021 Orange County Redistricting  
**Subject:** Keep Costa Mesa United

**Follow Up Flag:** Flag for follow up  
**Flag Status:** Completed

**Attention:** This email originated from outside the County of Orange. Use caution when opening attachments or links.

“Keep Costa Mesa United” I support Maps 5 and 2A

Roseanne Brown  
[roseanne@rbimages.com](mailto:roseanne@rbimages.com)  
**CELL:** 323-253-5338

**Osborn, Rachael**

---

**From:** Teray Stephens <teray@stephensconsultinggroup.com>  
**Sent:** Monday, November 08, 2021 7:33 AM  
**To:** 2021 Orange County Redistricting  
**Subject:** Keep Costa Mesa United

**Follow Up Flag:** Flag for follow up  
**Flag Status:** Completed

**Attention:** This email originated from outside the County of Orange. Use caution when opening attachments or links.

I support maps 5 and 2a.  
Theresa Stephens

**Osborn, Rachael**

---

**From:** Cheryl Galloway <galcheryl@gmail.com>  
**Sent:** Monday, November 08, 2021 7:24 AM  
**To:** 2021 Orange County Redistricting  
**Subject:** Vote on redistributing

**Follow Up Flag:** Flag for follow up  
**Flag Status:** Completed

Attention: This email originated from outside the County of Orange. Use caution when opening attachments or links.

Keep Costa Mesa united. I support Maps 5 and 2A.  
I am an active voter .  
Cheryl I Galloway

Sent from my iPhone  
Cheryl L Galloway

**Osborn, Rachael**

---

**From:** Elizabeth Riley <pjr355@gmail.com>  
**Sent:** Monday, November 08, 2021 7:10 AM  
**To:** 2021 Orange County Redistricting  
**Subject:** Re districting

**Follow Up Flag:** Flag for follow up  
**Flag Status:** Completed

**Attention:** This email originated from outside the County of Orange. Use caution when opening attachments or links.

Keep Costa Mesa United.  
I support maps 5 and 2A.  
Peter Riley



## Osborn, Rachael

---

**From:** Peter Riley <racerriley@gmail.com>  
**Sent:** Monday, November 08, 2021 7:07 AM  
**To:** 2021 Orange County Redistricting  
**Subject:** Don't divide Costa Mesa

**Follow Up Flag:** Flag for follow up  
**Flag Status:** Completed

**Attention:** This email originated from outside the County of Orange. Use caution when opening attachments or links.

Keep Costa Mesa United.  
I support maps 5 and 2A.  
Elizabeth Brennan

**Osborn, Rachael**

---

**From:** natalie rokos <nrokos28@gmail.com>  
**Sent:** Monday, November 08, 2021 7:01 AM  
**To:** 2021 Orange County Redistricting  
**Subject:** Do not split Costa Mesa

**Follow Up Flag:** Flag for follow up  
**Flag Status:** Completed

**Attention:** This email originated from outside the County of Orange. Use caution when opening attachments or links.

I respectfully ask that you keep Costa Mesa united and not split it for redistricting.

I support Maps 5 and 2A.

Thank you for your serious consideration to my request. Sincerely,

Natalie Rokos, Huntington Beach

**Osborn, Rachael**

---

**From:** Penny Elia <greenp1@cox.net>  
**Sent:** Monday, November 08, 2021 6:57 AM  
**To:** 2021 Orange County Redistricting  
**Subject:** "Keep Costa Mesa United" I support Maps 5 and 2A

**Follow Up Flag:** Flag for follow up  
**Flag Status:** Completed

Attention: This email originated from outside the County of Orange. Use caution when opening attachments or links.

The public has been purposely kept in the dark about your plans to redistrict. Keep Costa Mesa united!

Daniel Elia  
Laguna Beach

**Osborn, Rachael**

---

**From:** Penny Elia <greenp1@cox.net>  
**Sent:** Monday, November 08, 2021 6:57 AM  
**To:** 2021 Orange County Redistricting  
**Subject:** "Keep Costa Mesa United" I support Maps 5 and 2A

**Follow Up Flag:** Flag for follow up  
**Flag Status:** Completed

Attention: This email originated from outside the County of Orange. Use caution when opening attachments or links.

The public has been purposely kept in the dark about your plans to redistrict. Keep Costa Mesa united!

Penny Elia  
Laguna Beach

**Osborn, Rachael**

---

**From:** Jason Feddy <jasonfeddy@gmail.com>  
**Sent:** Monday, November 08, 2021 6:49 AM  
**To:** 2021 Orange County Redistricting  
**Subject:** Redistricting

**Follow Up Flag:** Flag for follow up  
**Flag Status:** Completed

**Attention:** This email originated from outside the County of Orange. Use caution when opening attachments or links.

**“Keep Costa Mesa United” I support Maps 5 and 2A**

**Jason Feddy, resident, Aliso Viejo.**

**Osborn, Rachael**

---

**From:** Janet Bescoby <jbescoby@gmail.com>  
**Sent:** Monday, November 08, 2021 6:31 AM  
**To:** 2021 Orange County Redistricting  
**Subject:** BOS Redistricting

**Follow Up Flag:** Flag for follow up  
**Flag Status:** Completed

**Attention:** This email originated from outside the County of Orange. Use caution when opening attachments or links.

Keep Costa Mesa United!  
I support map 5 and 2A.

Janet Bescoby  
Laguna Beach

**Osborn, Rachael**

---

**From:** Debbi Parrott <debparrott@gmail.com>  
**Sent:** Monday, November 08, 2021 6:17 AM  
**To:** 2021 Orange County Redistricting  
**Subject:** Redistricting

**Follow Up Flag:** Flag for follow up  
**Flag Status:** Completed

Attention: This email originated from outside the County of Orange. Use caution when opening attachments or links.

To whom it may concern,  
"Keep Costa Mesa United" I support Maps 5 and 2A Debbi Parrott, Huntington Beach 92649

Sent from my iPhone

**Osborn, Rachael**

---

**From:** carol lovely <clovely4@yahoo.com>  
**Sent:** Monday, November 08, 2021 5:38 AM  
**To:** 2021 Orange County Redistricting

**Follow Up Flag:** Flag for follow up  
**Flag Status:** Completed

**Attention:** This email originated from outside the County of Orange. Use caution when opening attachments or links.

"Keep Costa Mesa United" I support Maps 5 and 2A

[Sent from Yahoo Mail for iPad](#)



**Osborn, Rachael**

---

**From:** Debbie Silverstein <milwaukee\_debbie@hotmail.com>  
**Sent:** Sunday, November 07, 2021 11:18 PM  
**To:** 2021 Orange County Redistricting  
**Subject:** Redistricting

**Follow Up Flag:** Flag for follow up  
**Flag Status:** Completed

Attention: This email originated from outside the County of Orange. Use caution when opening attachments or links.

Keep Costa Mesa United! I support maps 5 and 2a.  
Thank you,  
Debbie Silverstein

**Osborn, Rachael**

---

**From:** Andrea Alexander <andreaalexander12@ymail.com>  
**Sent:** Sunday, November 07, 2021 11:16 PM  
**To:** 2021 Orange County Redistricting  
**Subject:** Maps

**Follow Up Flag:** Flag for follow up  
**Flag Status:** Completed

**Attention:** This email originated from outside the County of Orange. Use caution when opening attachments or links.

Dear Board of Supervisors,

I would appreciate that you, our Board of Supervisors, keep Costa Mesa together. Do not split our city. I suggest that the Board consider strongly maps numbered 5 and 2A.

It is important that you, as a Board, remain unpolitical in this process and that Costa Mesa continue to be United as a singular District. Anything else would suggest gerrymandering. We are watching this process carefully and your decisions will speak volumes.

Andrea Alexander

[Sent from Yahoo Mail for iPhone](#)

**Osborn, Rachael**

---

**From:** John Aguilera <ja-12@pacbell.net>  
**Sent:** Sunday, November 07, 2021 10:04 PM  
**To:** 2021 Orange County Redistricting  
**Subject:** Re districting

**Follow Up Flag:** Flag for follow up  
**Flag Status:** Completed

Attention: This email originated from outside the County of Orange. Use caution when opening attachments or links.

I would like to keep Costa Mesa united. I support maps 5 and 2A.

Joseph Aguilera

Sent from my iPhone

**Osborn, Rachael**

---

**From:** vtriem@cox.net  
**Sent:** Sunday, November 07, 2021 9:43 PM  
**To:** 2021 Orange County Redistricting  
**Subject:** Redistricting

**Follow Up Flag:** Flag for follow up  
**Flag Status:** Completed

Attention: This email originated from outside the County of Orange. Use caution when opening attachments or links.

Keep Costa Mesa United! I support Maps 5 & 2A.  
Vivian Candy

Sent from my iPhone

**Osborn, Rachael**

---

**From:** Joni Nichols <jonibnichols@gmail.com>  
**Sent:** Sunday, November 07, 2021 9:30 PM  
**To:** 2021 Orange County Redistricting  
**Subject:** Redistricting

**Follow Up Flag:** Flag for follow up  
**Flag Status:** Completed

**Attention:** This email originated from outside the County of Orange. Use caution when opening attachments or links.

“Keep Costa Mesa United” I support Maps 5 and 2A

Joan Nichols

213 Diamond Ave

92662

**Osborn, Rachael**

---

**From:** Aline Arbid <alinearbid@gmail.com>  
**Sent:** Sunday, November 07, 2021 9:16 PM  
**To:** 2021 Orange County Redistricting  
**Subject:** Keep Costa Mesa United

**Follow Up Flag:** Flag for follow up  
**Flag Status:** Completed

Attention: This email originated from outside the County of Orange. Use caution when opening attachments or links.

"Keep Costa Mesa United".  
I support Maps 5 and 2A.

Aline A. Blumetti

## Osborn, Rachael

---

**From:** Barbara J Anderson <barba1844@me.com>  
**Sent:** Sunday, November 07, 2021 9:08 PM  
**To:** 2021 Orange County Redistricting  
**Subject:** redistricting

**Follow Up Flag:** Flag for follow up  
**Flag Status:** Completed

**Attention:** This email originated from outside the County of Orange. Use caution when opening attachments or links.

I support Maps 5 and 2 A  
Keep Costa Mesa United

Thank You  
Barb

Barbara J Anderson  
Certified Advanced Rolfer since 1986  
714-393-4398  
[therolfingroom.com](http://therolfingroom.com)  
[barb@therolfingroom.com](mailto:barb@therolfingroom.com)



**Osborn, Rachael**

---

**From:** info <lagunaresidentsfirst@gmail.com>  
**Sent:** Sunday, November 07, 2021 8:48 PM  
**To:** 2021 Orange County Redistricting  
**Subject:** Redistricting

**Follow Up Flag:** Flag for follow up  
**Flag Status:** Completed

**Attention:** This email originated from outside the County of Orange. Use caution when opening attachments or links.

Hello Orange County Supervisors:

**Keep Costa Mesa United” I support Maps 5 and 2A**

**George Weiss  
Laguna Beach**



**Osborn, Rachael**

---

**From:** Judy Stamm <judystamm@att.net>  
**Sent:** Sunday, November 07, 2021 8:31 PM  
**To:** 2021 Orange County Redistricting  
**Subject:** Redistricting Costa Mesa

**Follow Up Flag:** Flag for follow up  
**Flag Status:** Completed

**Attention:** This email originated from outside the County of Orange. Use caution when opening attachments or links.

**“Keep Costa Mesa United” I support Maps 5 and 2A**

Sent from my iPhone

**Osborn, Rachael**

---

**From:** Nicole Nelson <olenicole@gmail.com>  
**Sent:** Sunday, November 07, 2021 8:27 PM  
**To:** 2021 Orange County Redistricting  
**Subject:** Regarding Redistricting

**Follow Up Flag:** Flag for follow up  
**Flag Status:** Completed

**Attention:** This email originated from outside the County of Orange. Use caution when opening attachments or links.

To Whom it May Concern:

Keep Costa Mesa United. I support Maps 5 and 2A.

Sincerely,  
Nicole Nelson  
Newport Beach, CA

**Osborn, Rachael**

---

**From:** Debra Quam <dkquam@gmail.com>  
**Sent:** Sunday, November 07, 2021 8:01 PM  
**To:** 2021 Orange County Redistricting  
**Subject:** Redistricting maps

**Follow Up Flag:** Flag for follow up  
**Flag Status:** Completed

Attention: This email originated from outside the County of Orange. Use caution when opening attachments or links.

It would not serve any good purpose to split Costa Mesa and would have many negative impacts. Keep Costa Mesa united. I support map 2A and map 5 and I currently live in District 2.

Debra Quam

Sent from my iPad

**Osborn, Rachael**

---

**From:** Audrey Prosser <prosserga@gmail.com>  
**Sent:** Sunday, November 07, 2021 7:50 PM  
**To:** 2021 Orange County Redistricting  
**Subject:** Redistricting Maps - BOS meeting Tuesday

**Follow Up Flag:** Flag for follow up  
**Flag Status:** Completed

**Attention:** This email originated from outside the County of Orange. Use caution when opening attachments or links.

**Please keep Costa Mesa United. I support Maps 5 and 2-A**

**Osborn, Rachael**

---

**From:** Anna-Marie Claassen <claassenam@gmail.com>  
**Sent:** Sunday, November 07, 2021 7:47 PM  
**To:** 2021 Orange County Redistricting  
**Subject:** Do Not Split Costa Mesa

**Follow Up Flag:** Flag for follow up  
**Flag Status:** Completed

Attention: This email originated from outside the County of Orange. Use caution when opening attachments or links.

Please keep Costa Mesa United. I support maps 5 and 2A.

Thank you,  
Anna-Marie Claassen, Newport Beach

**Osborn, Rachael**

---

**From:** Mary <oloughlm@yahoo.com>  
**Sent:** Sunday, November 07, 2021 7:35 PM  
**To:** 2021 Orange County Redistricting  
**Subject:** Keep Costa Mesa United

**Follow Up Flag:** Flag for follow up  
**Flag Status:** Completed

Attention: This email originated from outside the County of Orange. Use caution when opening attachments or links.

I support maps 5 and 2A.

Mary O'Loughlin  
92660

Sent from my iPhone

**Osborn, Rachael**

---

**From:** Ann Owens <annowens@cox.net>  
**Sent:** Sunday, November 07, 2021 7:30 PM  
**To:** 2021 Orange County Redistricting  
**Subject:** Redistricting maps

**Follow Up Flag:** Flag for follow up  
**Flag Status:** Completed

Attention: This email originated from outside the County of Orange. Use caution when opening attachments or links.

Dear Board of Supervisors,  
Please be fair in drawing the new redistricting maps. Costa Mesa or any other city should not be divided. One week is insufficient time to peruse all the maps presented, however I do prefer maps 2A and 5. These political tricks only show your lack of honesty and fair play.

Sincerely,  
Ann Owens  
Lake Forest, Ca

Sent from my iPhone

**Osborn, Rachael**

---

**From:** Ann Owens <annowens@cox.net>  
**Sent:** Sunday, November 07, 2021 7:22 PM  
**To:** 2021 Orange County Redistricting  
**Subject:** Redistricting maps

**Follow Up Flag:** Flag for follow up  
**Flag Status:** Completed

Attention: This email originated from outside the County of Orange. Use caution when opening attachments or links.

Dear Board of Supervisors,

Please consider fairness and transparency when picking your new redistricting maps. Please keep Costa Mesa united. Cities should not be split. I support maps 2 and 5 A as they have the fairest boundaries. Do not lower yourself to political manipulations.

Sincerely,

Ann Owens

Lake Forest, Cac

Sent from my iPhone



**Osborn, Rachael**

---

**From:** gialisa at gmail <gialisa@gmail.com>  
**Sent:** Sunday, November 07, 2021 7:20 PM  
**To:** 2021 Orange County Redistricting

**Follow Up Flag:** Flag for follow up  
**Flag Status:** Completed

**Attention:** This email originated from outside the County of Orange. Use caution when opening attachments or links.

It is transparently political that you want to split the city of costa mesa. Keep Costa Mesa united! Keep gerrymandering out of politics.

If you want costa mesa voters, come up with better policies that appeal to them. Do not divide a city. I support maps 5 and 2A.

I am a resident and homeowner in Newport Beach, CA.

Warm regards,

Gialisa Gaffaney

**Osborn, Rachael**

---

**From:** Nina Smith <nm\_smith@yahoo.com>  
**Sent:** Sunday, November 07, 2021 7:09 PM  
**To:** 2021 Orange County Redistricting  
**Subject:** redistricting

**Follow Up Flag:** Flag for follow up  
**Flag Status:** Completed

**Attention:** This email originated from outside the County of Orange. Use caution when opening attachments or links.

Hello...

I'm a Costa Mesa business owner and a Newport Beach resident.

Keep Costa Mesa United. I support Maps 5 and 2A.

Thank you,  
Nina

Nina Smith  
2224 Heather Ln  
Newport Beach, CA 92660

Owner of the Eastside Mini-Mart, Costa Mesa, CA

**Osborn, Rachael**

---

**From:** Liz Dorn Parker <lizdornparker@sbcglobal.net>  
**Sent:** Sunday, November 07, 2021 7:06 PM  
**To:** 2021 Orange County Redistricting  
**Subject:** DO NOT SPLIT UP COSTA MESA!!!

**Follow Up Flag:** Flag for follow up  
**Flag Status:** Completed

**Attention:** This email originated from outside the County of Orange. Use caution when opening attachments or links.

I live in Costa Mesa, and the following maps are the BEST for Costa Mesa residents:

2A and 5

Splitting up Costa Mesa violates the 'keep communities together' which is mandated in law!

Elizabeth Parker  
Costa Mesa Resident

**Osborn, Rachael**

---

**From:** Julie Frost <julie.frost@geminos.ai>  
**Sent:** Sunday, November 07, 2021 6:56 PM  
**To:** 2021 Orange County Redistricting  
**Subject:** Comment on Redistricting

**Follow Up Flag:** Flag for follow up  
**Flag Status:** Completed

**Attention:** This email originated from outside the County of Orange. Use caution when opening attachments or links.

**Keep Costa Mesa United” I support Maps 5 and 2A**

Julie Frost  
6 Heavenly Isle  
Ladera Ranch, CA 92694

**Osborn, Rachael**

---

**From:** Carol Nilsen <cznilsen@gmail.com>  
**Sent:** Sunday, November 07, 2021 6:56 PM  
**To:** 2021 Orange County Redistricting  
**Subject:** Support Maps 5 and 2A

**Follow Up Flag:** Flag for follow up  
**Flag Status:** Completed

**Attention:** This email originated from outside the County of Orange. Use caution when opening attachments or links.

Dear Board of supervisors,  
I support a unified Costa Mesa. Please vote in support of maps 5 and 2A.  
Carol Nilsen  
Laguna Beach

**Osborn, Rachael**

---

**From:** Louise Adler <dr.louise.adler@gmail.com>  
**Sent:** Sunday, November 07, 2021 6:40 PM  
**To:** 2021 Orange County Redistricting  
**Subject:** Costa Mesa

**Follow Up Flag:** Flag for follow up  
**Flag Status:** Completed

**Attention:** This email originated from outside the County of Orange. Use caution when opening attachments or links.

Keep Costa Mesa united. I support Maps 5 an 2A

--

*Louise Adler, She/Her*

**Osborn, Rachael**

---

**From:** Dan Haspert <danhaspert@gmail.com>  
**Sent:** Sunday, November 07, 2021 6:35 PM  
**To:** 2021 Orange County Redistricting  
**Subject:** No no politically motivated redistricting.

**Follow Up Flag:** Flag for follow up  
**Flag Status:** Completed

**Attention:** This email originated from outside the County of Orange. Use caution when opening attachments or links.

This idea is shameful. Isupport maps 5 and 2a. Daniel E. Haspert, MD

**Osborn, Rachael**

---

**From:** Helaine Feingold <sunshine38@cox.net>  
**Sent:** Sunday, November 07, 2021 6:35 PM  
**To:** 2021 Orange County Redistricting  
**Subject:** Redistricting

**Follow Up Flag:** Flag for follow up  
**Flag Status:** Completed

Attention: This email originated from outside the County of Orange. Use caution when opening attachments or links.

I made an error in the last email I sent. I want to keep Costa Mesa United and keep maps five and 2A Helaine Feingold

Sent from my iPhone



**Osborn, Rachael**

---

**From:** Anne Caenn <anne@lagunaemail.com>  
**Sent:** Sunday, November 07, 2021 6:32 PM  
**To:** 2021 Orange County Redistricting  
**Subject:** Redistricting

**Follow Up Flag:** Flag for follow up  
**Flag Status:** Completed

Attention: This email originated from outside the County of Orange. Use caution when opening attachments or links.

Keep Costa Mesa United. I support Maps 5 and 2A.

Anne Caenn  
965 Katella Street  
Laguna Beach, CA 92651

**Osborn, Rachael**

---

**From:** Gregory McDonel <lrgmcdonel@yahoo.com>  
**Sent:** Sunday, November 07, 2021 6:31 PM  
**To:** 2021 Orange County Redistricting  
**Subject:** Redistricting!

**Follow Up Flag:** Flag for follow up  
**Flag Status:** Completed

**Attention:** This email originated from outside the County of Orange. Use caution when opening attachments or links.

**“Keep Costa Mesa United” I support Maps 5 and 2A**

**Osborn, Rachael**

---

**From:** Chris <cchris675@gmail.com>  
**Sent:** Sunday, November 07, 2021 6:21 PM  
**To:** 2021 Orange County Redistricting

**Follow Up Flag:** Flag for follow up  
**Flag Status:** Completed

**Attention:** This email originated from outside the County of Orange. Use caution when opening attachments or links.

No

**Osborn, Rachael**

---

**From:** Response@ocgov.com on behalf of OC Clerk of the Board <Response@ocgov.com>  
**Sent:** Sunday, November 07, 2021 6:15 PM  
**To:** 2021 Orange County Redistricting  
**Subject:** 2021 Redistricting Idea Form - ONLINE FORM SUBMISSION

**Follow Up Flag:** Flag for follow up  
**Flag Status:** Completed

**Attention:** This email originated from outside the County of Orange. Use caution when opening attachments or links.

Submitted on Sun, 11/07/2021 - 18:15

Submitted by: Anonymous

Submitted values are:

**Name**

Jo Shade

**Organization**

Rossmoor Homeowners Assoc.

**Phone Number**

[15628181747](tel:15628181747)

**Email**

[coolshade@verizon.net](mailto:coolshade@verizon.net)

**City/County**

Los Alamitos

**My ideas/comments are as follows**

Adamantly, oppose this redistricting...

Didn't purchase our home in the LA county for many reasons.

Not about to accept this on any level.

**Osborn, Rachael**

---

**From:** kacollell <kacollell@att.net>  
**Sent:** Sunday, November 07, 2021 6:14 PM  
**To:** 2021 Orange County Redistricting  
**Subject:** Redistricting

**Follow Up Flag:** Flag for follow up  
**Flag Status:** Completed

**Attention:** This email originated from outside the County of Orange. Use caution when opening attachments or links.

To the OC Board of Supervisors,  
I strongly oppose the proposed redistricting changes. No one wants Costa Mesa divided. I support Maps 5 and 2A. Keep Costa Mesa united! We expect you to represent our voices, not manipulating our district for political gains. No gerrymandering in OC. We are watching...  
Sincerely,  
Kim Collell  
Sent from my Verizon, Samsung Galaxy smartphone

**Osborn, Rachael**

---

**From:** Jahn Levitt <jahnml@yahoo.com>  
**Sent:** Sunday, November 07, 2021 6:10 PM  
**To:** 2021 Orange County Redistricting  
**Subject:** No redistribution!!!

**Follow Up Flag:** Flag for follow up  
**Flag Status:** Completed

**Attention:** This email originated from outside the County of Orange. Use caution when opening attachments or links.

Keep Costa Mesa united!  
I support maps 5 and 2A.

Jahn Levitt

[Sent from Yahoo Mail for iPhone](#)

**Osborn, Rachael**

---

**From:** Eric & Danielle Braham <lagunabraham1@gmail.com>  
**Sent:** Sunday, November 07, 2021 6:05 PM  
**To:** 2021 Orange County Redistricting  
**Subject:** Redistricting

**Follow Up Flag:** Flag for follow up  
**Flag Status:** Completed

**Attention:** This email originated from outside the County of Orange. Use caution when opening attachments or links.

**“Keep Costa Mesa United” I support Maps 5 and 2A**

--

Best,

Danielle Braham  
949-566-1896

**Osborn, Rachael**

---

**From:** Barbara Schilling - GMAIL <harper0117@gmail.com>  
**Sent:** Sunday, November 07, 2021 6:03 PM  
**To:** 2021 Orange County Redistricting  
**Subject:** "Keep Costa Mesa United" I support Maps 5 and 2A

**Follow Up Flag:** Flag for follow up  
**Flag Status:** Completed

**Attention:** This email originated from outside the County of Orange. Use caution when opening attachments or links.

**"Keep Costa Mesa United" I support Maps 5 and 2A**

Barbara Ellen

"Music gives a soul to the universe,  
wings to the mind,  
flight to the imagination,  
and life to everything."  
~ Plato ~



**Osborn, Rachael**

---

**From:** Suad Elias <suadelias@me.com>  
**Sent:** Sunday, November 07, 2021 5:50 PM  
**To:** 2021 Orange County Redistricting  
**Subject:** Keep Costa Mesa united

**Follow Up Flag:** Flag for follow up  
**Flag Status:** Completed

**Attention:** This email originated from outside the County of Orange. Use caution when opening attachments or links.

I want to express my support for Maps 5 and 2A. Costa Mesa should stay united.  
**Respectfully,**

Suad Elias

**Osborn, Rachael**

---

**From:** Kathy de Marquette <katdmrkt@yahoo.com>  
**Sent:** Sunday, November 07, 2021 3:20 PM  
**To:** 2021 Orange County Redistricting  
**Subject:** Redesticting concerns

**Follow Up Flag:** Flag for follow up  
**Flag Status:** Completed

Attention: This email originated from outside the County of Orange. Use caution when opening attachments or links.

To the members of the commission which is considering redistricting Orange County and surrounding counties,

As residents of San Clemente for 33 years we emlore the Commission to keep Orange County beaches as they are with representation by Orange County, and not by San Diego nor Los Angeles. All Orange County beaches shall be united in one congressional district.

We need representatives that truly represent our beach area and will address our unique concerns, not those of Los Angeles, San Diego or Riverside counties.

We appreciate your consideration to keep our district intact, Brad & Kathy de Marquette

## Osborn, Rachael

---

**From:** Response@ocgov.com on behalf of OC Clerk of the Board <Response@ocgov.com>  
**Sent:** Sunday, November 07, 2021 11:18 AM  
**To:** 2021 Orange County Redistricting  
**Subject:** 2021 Redistricting Idea Form - ONLINE FORM SUBMISSION

**Follow Up Flag:** Flag for follow up  
**Flag Status:** Completed

**Attention:** This email originated from outside the County of Orange. Use caution when opening attachments or links.

Submitted on Sun, 11/07/2021 - 11:17

Submitted by: Anonymous

Submitted values are:

**Name**

Clark Riley

**Email**

[clarkriley@cox.net](mailto:clarkriley@cox.net)

**City/County**

San Clemente , Orange

**My ideas/comments are as follows**

Do not redistrict

**Osborn, Rachael**

---

**From:** Response@ocgov.com on behalf of OC Clerk of the Board <Response@ocgov.com>  
**Sent:** Sunday, November 07, 2021 9:55 AM  
**To:** 2021 Orange County Redistricting  
**Subject:** 2021 Redistricting Idea Form - ONLINE FORM SUBMISSION

**Follow Up Flag:** Flag for follow up  
**Flag Status:** Completed

**Attention:** This email originated from outside the County of Orange. Use caution when opening attachments or links.

Submitted on Sun, 11/07/2021 - 09:54

Submitted by: Anonymous

Submitted values are:

**Name**

Ginger Leibfreid

**Organization**

none

**Phone Number**

[7145013700](tel:7145013700)

**Email**

[glpoli@protonmail.com](mailto:glpoli@protonmail.com)

**City/County**

Huntington Beach/Orange County

**My ideas/comments are as follows**

I do not want Huntington Beach to be redistricted from Orange County to LA County. When I look at the shore of Long Beach it is nothing like the shores of Orange County! Before we purchased our home in 1989 in Huntington Beach, we looked in LA County, Long Beach to be specific we decided we wanted to forever be in Orange County for its lovely coastline and many reasons. Please know I oppose the redistricting of my home city of Huntington Beach to LA County and am asking you to oppose as well!

## Osborn, Rachael

---

**From:** Response@ocgov.com on behalf of OC Clerk of the Board <Response@ocgov.com>  
**Sent:** Saturday, November 06, 2021 6:29 PM  
**To:** 2021 Orange County Redistricting  
**Subject:** 2021 Redistricting Idea Form - ONLINE FORM SUBMISSION

**Follow Up Flag:** Flag for follow up  
**Flag Status:** Completed

**Attention:** This email originated from outside the County of Orange. Use caution when opening attachments or links.

Submitted on Sat, 11/06/2021 - 18:29

Submitted by: Anonymous

Submitted values are:

**Name**

Samuel Helm

**Organization**

concerned citizen

**Email**

[samuelahelm@gmail.com](mailto:samuelahelm@gmail.com)

**City/County**

Costa Mesa

**My ideas/comments are as follows**

Please do not divide the City of Costa Mesa in any redistricting plan. Keep Costa Mesa whole. I understand "map 2A" is the redistricting option that will keep Costa Mesa whole.

Samuel A. Helm

**Osborn, Rachael**

---

**From:** Response@ocgov.com on behalf of OC Clerk of the Board <Response@ocgov.com>  
**Sent:** Saturday, November 06, 2021 2:05 PM  
**To:** 2021 Orange County Redistricting  
**Subject:** 2021 Redistricting Idea Form - ONLINE FORM SUBMISSION

**Follow Up Flag:** Flag for follow up  
**Flag Status:** Completed

**Attention:** This email originated from outside the County of Orange. Use caution when opening attachments or links.

Submitted on Sat, 11/06/2021 - 14:05

Submitted by: Anonymous

Submitted values are:

**Name**

Fabia Barsic

**Phone Number**

[6262308496](tel:6262308496)

**Email**

[fbarsic@protonmail.com](mailto:fbarsic@protonmail.com)

**City/County**

San Clemente / Orange County

**My ideas/comments are as follows**

Please do NOT redistrict Orange County. We need to keep all voting districts as it is and all beaches of Orange County part of the same county going forward. Orange County has a history with all of its beaches, keeping the caliber of those beaches above all other counties, in many ways.

All Orange County Beach cities shall stay in Orange County and not be redistricted to other counties.

Sincerely,

Fabia Barsic

Resident of San Clemente, Orange County

2708 Calle Estrella De Mar, San Clemente, CA 92673

**Osborn, Rachael**

---

**From:** Response@ocgov.com on behalf of OC Clerk of the Board <Response@ocgov.com>  
**Sent:** Saturday, November 06, 2021 2:04 PM  
**To:** 2021 Orange County Redistricting  
**Subject:** 2021 Redistricting Idea Form - ONLINE FORM SUBMISSION

**Follow Up Flag:** Flag for follow up  
**Flag Status:** Completed

**Attention:** This email originated from outside the County of Orange. Use caution when opening attachments or links.

Submitted on Sat, 11/06/2021 - 14:03

Submitted by: Anonymous

Submitted values are:

**Name**

Carolyn Byrne

**Phone Number**

[3233942223](tel:3233942223)

**Email**

[carolynb77@aol.com](mailto:carolynb77@aol.com)

**City/County**

LA PALMA

**My ideas/comments are as follows**

To the Members of the Commission which is considering redistricting Orange County and surroundings counties.

As a resident of La Palma I implore the Commission to keep Orange County beaches as they are with representation by Orange County, and not by San Diego nor Los Angeles. All Orange County beaches shall be united in one congressional district.

Sincerely,  
Carolyn Byrne

**Osborn, Rachael**

---

**From:** Catherine Harbin <cathyemily3@gmail.com>  
**Sent:** Friday, November 05, 2021 6:49 PM  
**To:** 2021 Orange County Redistricting  
**Subject:** Emailing IDEA\_C\_2.PDF  
**Attachments:** IDEA\_C\_2.PDF

**Follow Up Flag:** Flag for follow up  
**Flag Status:** Completed

**Attention:** This email originated from outside the County of Orange. Use caution when opening attachments or links.



**County of Orange 2021 Redistricting  
Supervisory District Idea and Comment Form**

Attachment D

Name: (required) Catherine Harbin

**Optional Information<sup>1</sup>**

City/County: Stanton, Orange

Phone Number: 714 931 4745

Email: cathyemily3@gmail.com

Organization (if any): resident

*Please write any ideas or comments you would like to share with the County of Orange on redistricting. If you are sharing ideas about proposed district boundaries or communities of interest (including, but not limited to information on boundaries of your community whether defined by city, school area or other criteria, and what bonds your community, please include descriptive information about the area in mind, such as streets or landmarks. The comments you provide will be posted online as part of the public comment and public input process.*

*A "community of interest" is a population that shares common social or economic interests that should be included within a single supervisory district for purposes of its effective and fair representation. Communities of interest do not include relationships with political parties, incumbents, or political candidates.*

*Please use additional pages if you require more room to write.*

*My ideas/comments are as follows:*

Greetings All,  
short n sweet...  
As a lifelong resident of LA and Orange County  
I do believe your "proposed plan "choices 1-8

Seem to try to offer something for everyone. However  
I do not believe that should be the objective.

So IF WE THE PEOPLE WERE GIVEN A CHOICE ,  
I WOULD  
choose THE # 1 PLAN , BECAUSE IT APPEARS TO BE  
THE ONLY  
ONE OF THE EIGHT DRAWN  
WITHOUT BIAS. THANK YOU ,  
BEST WISHES,

*Cathy Emily Harbin*

CATHERINE HARBIN AND DAUGHTER EMILY HARBI

<sup>1</sup> If this information is provided, the County may use it to contact you with questions. The information may be subject to disclosure under the Public Records Act

*Please continue on additional pages if you need more space.*

Submit to:

- Email: [redistricting@ocgov.com](mailto:redistricting@ocgov.com) OR
- Mail paper copy to:  
Attn: 2021 Redistricting Team  
333 West Santa Ana Blvd., 3rd Floor  
Santa Ana, CA 92701

Comments may also be submitted via the online web form  
at <https://www.ocgov.com/redistricting/feedback>

**Osborn, Rachael**

---

**From:** Luis Tapia <ltapia@oclafco.org>  
**Sent:** Friday, November 05, 2021 3:52 PM  
**To:** 2021 Orange County Redistricting  
**Subject:** 2021 County of Orange Redistricting Proposals  
**Attachments:** County BOS Redistricting - OC LAFCO Comment Letter\_11\_5\_2021.pdf

**Follow Up Flag:** Follow up  
**Flag Status:** Completed

**Attention:** This email originated from outside the County of Orange. Use caution when opening attachments or links.

Good afternoon,

Please find the attached agency comments from Orange County Local Agency Formation Commission relative to the 2021 County of Orange Redistricting Proposals. If you have any questions, please contact Carolyn Emery, Executive Officer, at (714) 640-5100 or email [cemery@oclafco.org](mailto:cemery@oclafco.org).

Luis Tapia  
Policy Analyst  
Orange LAFCO  
[ltapia@oclafco.org](mailto:ltapia@oclafco.org)  
714-640-5100





## REGULAR MEMBERS

### CHAIR

**Douglass Davert**  
Special District Member

### VICE CHAIR

**Donald P. Wagner**  
County Member

### IMMEDIATE PAST CHAIR

**Derek J. McGregor**  
Public Member

**Lisa Bartlett**  
County Member

**Wendy Bucknum**  
City Member

**James Fisler**  
Special District Member

**Mike Posey**  
City Member

## ALTERNATES

**Katrina Foley**  
County Member

**Kathryn Freshley**  
Special District Member

**Peggy Huang**  
City Member

**Lou Penrose**  
Public Member


## STAFF

**Carolyn Emery**  
Executive Officer

**Scott Smith**  
General Counsel

November 5, 2021

**TO:** Board of Supervisors  
County of Orange

**FROM:** Carolyn Emery   
OC LAFCO Executive Officer

**SUBJECT:** OC LAFCO Comments – 2021 County of Orange  
Redistricting Proposals

The Local Agency Formation Commission of Orange County (OC LAFCO) respectfully provides the following comments to the County's redistricting proposals as specified below:

### Proposal 4A and 4B Maps

- Referenced in the Proposal 4A and 4B maps is an unincorporated area located south of Broadway Avenue, bordering Orange Avenue to the north, Brookhurst to the west and Gilbert Street to the east and proposed for placement within District 4. As a note, the area is a part of a larger unincorporated area identified by OC LAFCO as the "Southwest Anaheim" island that is located within the City of Anaheim's sphere of influence. As this area has established a shared community identity and to assist in the facilitation of future annexation of the entire unincorporated area to the City of Anaheim, OC LAFCO recommends the Board consider placing the entire Southwest Anaheim island within District 4. A map of the entire Southwest Anaheim island is attached for your reference as **Exhibit A**.

### Proposal 4A and 4C Maps

- Referenced in the Proposal 4A and 4C maps is an unincorporated area located to the east of Rancho Santiago Boulevard, west of Hewest Street, and north of Pearl Avenue and proposed for placement within District 3. As a note, the area is part of a larger unincorporated area identified by OC LAFCO as the "El Modena" island that is located within the City of Orange's sphere of influence. As the larger portion of the El Modena island is proposed for placement within District 2 and to assist in the facilitation of future annexation of the entire island to the City of Orange, OC LAFCO recommends the Board consider placing the entire

El Modena island within District 2. A map of the entire El Modena island is attached for your reference as ***Exhibit B***.

Thank you for considering these comments, and if you have any questions, the Board or County staff may contact me at (714) 640-5100 or by email at [cemery@oclafco.org](mailto:cemery@oclafco.org).

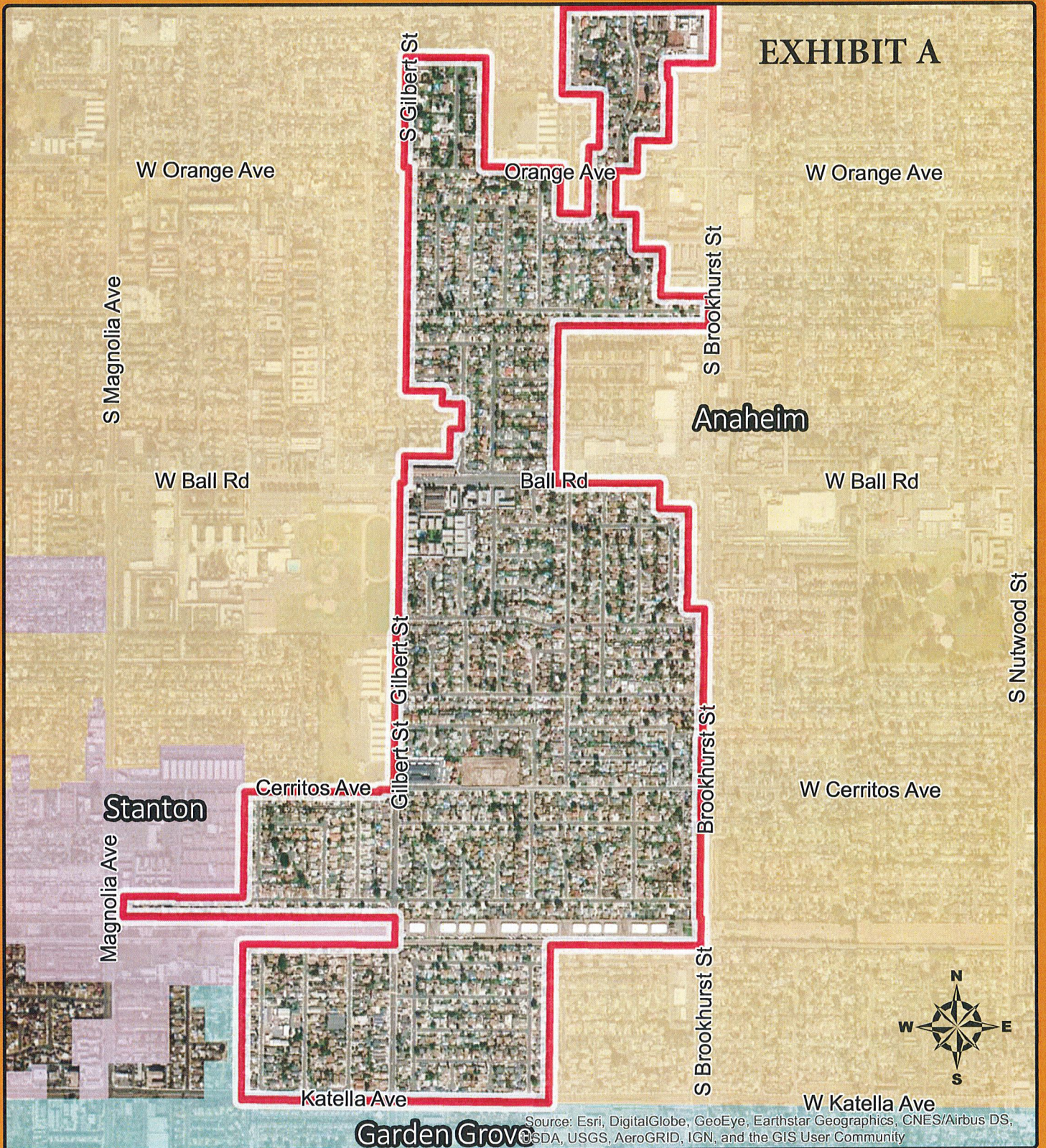
cc: Jessica Witt, County Executive Office  
Tom Hatch, Interim City Manager, Orange  
James Vanderpool, City Manager, Anaheim

Exhibits:

A: Southwest Anaheim Island  
B: El Modena Island




# EXHIBIT A



## City of Anaheim Southwest Anaheim Island

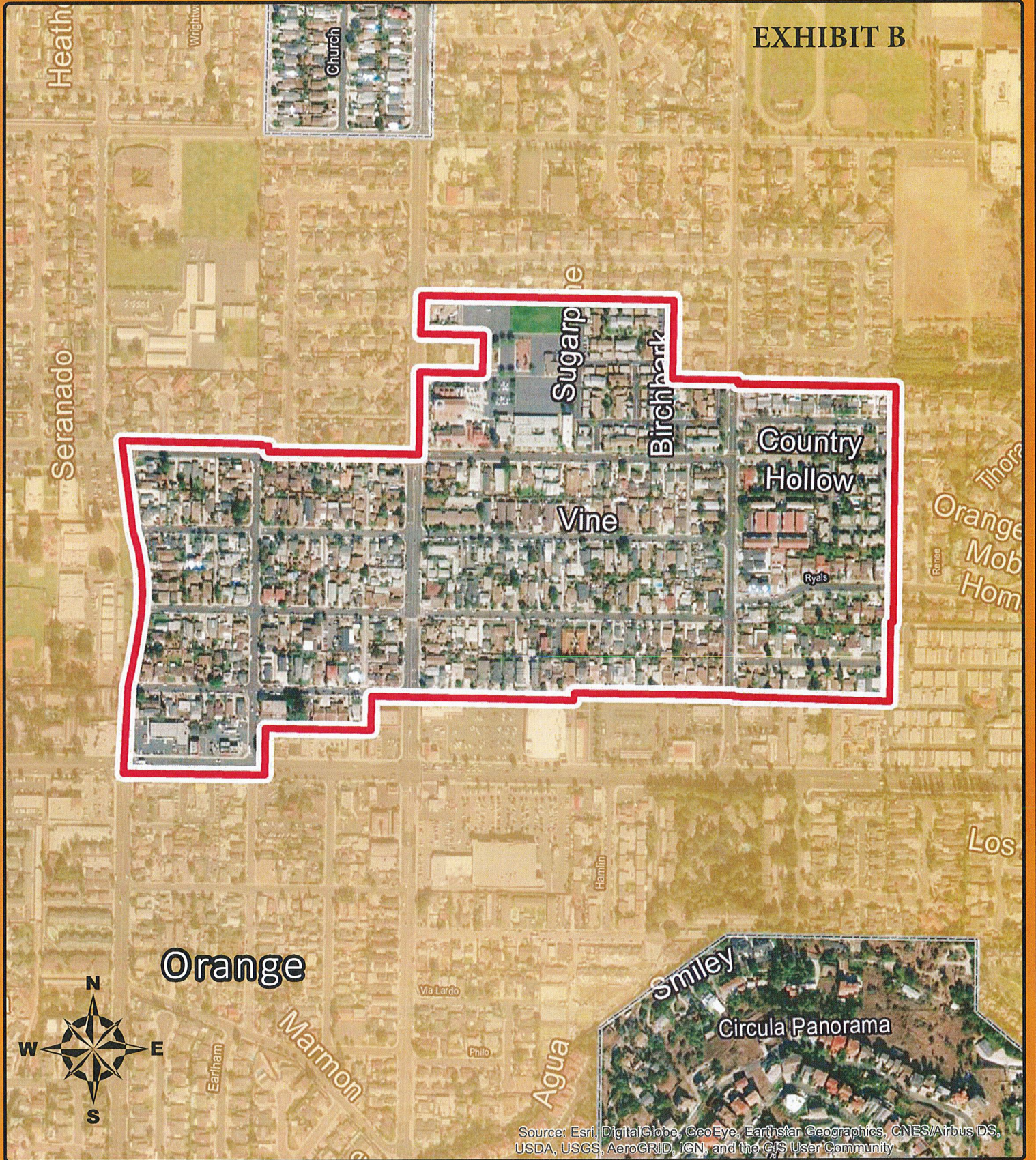
### Legend

 Southwest Anaheim Island

0 0.5  
Miles



# EXHIBIT B



## City of Orange El Modena Island

0 0.2 Miles



Legend

El Modena Island

Page 102 of 128



**Osborn, Rachael**

---

**From:** Response@ocgov.com on behalf of OC Clerk of the Board <Response@ocgov.com>  
**Sent:** Thursday, November 04, 2021 4:12 PM  
**To:** 2021 Orange County Redistricting  
**Subject:** 2021 Redistricting Idea Form - ONLINE FORM SUBMISSION

**Follow Up Flag:** Follow up  
**Flag Status:** Completed

**Attention:** This email originated from outside the County of Orange. Use caution when opening attachments or links.

Submitted on Thu, 11/04/2021 - 16:12

Submitted by: Anonymous

Submitted values are:

**Name**

Zachary Griggy

**Organization**

Associated Students of UC Irvine

**Email**

[zgriggy@uci.edu](mailto:zgriggy@uci.edu)

**City/County**

Irvine, CA

**My ideas/comments are as follows**

My name is Zachary Griggy and I represent over 6,000 UC Irvine undergraduates in the UCI undergraduate student Senate. I'm writing on behalf of the Associated Students of UC Irvine to express our concerns about Proposals 2 and 4 and how they treat Irvine's college student population and UC Irvine's off-campus student population.

UC Irvine is a community of over 30,000 undergraduate students, 6,000 graduate students and thousands of university professors, administrators and staff. The University is a powerful engine for the local economy and student upward mobility, as many of UCI's undergraduate students are first generation students or from low-income families. While most UCI students live within two miles of campus, a large contingent of students live farther away from campus in other Irvine neighborhoods and commute to and from their classes due to unaffordable rents near the main campus.

ASUCI is concerned about Proposals 2 and 4, as we believe these maps could divide UCI's off-campus student population. The ASUCI Senate voted unanimously on Tuesday to officially oppose Proposals 2 and 4 unless the maps are amended to better keep Irvine's college student population together. We believe these maps will jeopardize Irvine college students opportunity for political representation by dividing UCI's off-campus student population and, in the case, of Proposal 2, separating UC Irvine from Irvine Valley College, a campus where many UCI students attend classes and whose students have similar issues in need of representation.

We hope that the board will make the following changes to Proposals 2 and 4 to make them more representative of

Irvine college students as well as the city in general:

- Avoiding dividing the city of Irvine between districts, if possible. This would help ensure that UCI's off-campus population is better represented and minimize potential for voter confusion.
- If Irvine must be divided, do not divide the city into more than two districts and avoid using Interstate 405 as the dividing line, which is a boundary that would separate UCI from IVC and many off-campus students from the main campus
- Minimize the amount of coastal Orange County South Irvine gets paired with. UC Irvine serves a number of low-income and first generation college students and we are concerned that pairing UC Irvine and the middle class neighborhoods of south Irvine could result in a district that does not represent those communities

We hope that the Board will listen to our concerns and we thank you for your time and consideration.

Sincerely,

Zachary R. Griggy  
Social Sciences Senator  
Associated Students of UC Irvine



**Osborn, Rachael**

---

**From:** Response@ocgov.com on behalf of OC Clerk of the Board <Response@ocgov.com>  
**Sent:** Wednesday, November 03, 2021 3:03 PM  
**To:** 2021 Orange County Redistricting  
**Subject:** 2021 Redistricting Idea Form - ONLINE FORM SUBMISSION

**Follow Up Flag:** Follow up  
**Flag Status:** Completed

**Attention:** This email originated from outside the County of Orange. Use caution when opening attachments or links.

Submitted on Wed, 11/03/2021 - 15:02

Submitted by: Anonymous

Submitted values are:

**Name**

Cassius Rutherford

**Email**

[cashrutherford@gmail.com](mailto:cashrutherford@gmail.com)

**City/County**

Costa Mesa

**My ideas/comments are as follows**

As an active voter, I write to ask that you make sure that the City of Costa Mesa is wholly included in one supervisorial district. The plans to divide the city into multiple supervisors' districts are unwarranted and will negatively impact our residents in the political process. Given that Costa Mesa was recently the target of a lawsuit under the voting rights act due to parts of the city not receiving fair representation over several decades, it would also be unwise for the county to break up the city into multiple political districts. Please keep Costa Mesa in one district.

**Osborn, Rachael**

---

**From:** outlook\_2A2E30A39CA19C2D@outlook.com <wendyleece@gmail.com>  
**Sent:** Wednesday, November 03, 2021 11:08 AM  
**To:** 2021 Orange County Redistricting; Wendy Leece  
**Subject:** Keep Costa Mesa Together

**Follow Up Flag:** Follow up  
**Flag Status:** Completed

**Attention:** This email originated from outside the County of Orange. Use caution when opening attachments or links.

Please do not select a map that would divide Costa Mesa.  
Thank you very much.  
Wendy Leece  
Costa Mesa resident

Sent from [Mail](#) for Windows

**Osborn, Rachael**

---

**From:** Uyen Phuong <isitonthetoiletwrite@gmail.com>  
**Sent:** Tuesday, November 02, 2021 2:40 PM  
**To:** 2021 Orange County Redistricting  
**Subject:** I Support the OC PRA Map

**Follow Up Flag:** Follow up  
**Flag Status:** Completed

**Attention:** This email originated from outside the County of Orange. Use caution when opening attachments or links.

My name is Uyen Vo and I am a resident of Westminster, CA. I support the OC People's Redistricting Alliance Supervisorial map. This map prioritizes communities that have been historically marginalized, corrects the problems with the current configuration, and complies with the legal requirements of the Voting Rights Act and Fair Maps Act. The current map configuration has disenfranchised communities of color by prioritizing the interests of one political party.

The OC PRA map has made communities of interest its top priority when drawing lines, considering the important testimonies of residents from communities that have been harmed by the current configuration.

The board needs to correct the significant legal problems with the current map configuration. I urge you to adopt the OC People's Redistricting Alliance map.

**Osborn, Rachael**

---

**From:** Cuong Vo <cuongvo6@gmail.com>  
**Sent:** Tuesday, November 02, 2021 2:39 PM  
**To:** 2021 Orange County Redistricting  
**Subject:** I Support the OC PRA Map

**Follow Up Flag:** Follow up  
**Flag Status:** Completed

**Attention:** This email originated from outside the County of Orange. Use caution when opening attachments or links.

My name is Cuong Vo and I am a resident of Westminster, CA. I support the OC People's Redistricting Alliance Supervisorial map. This map prioritizes communities that have been historically marginalized, corrects the problems with the current configuration, and complies with the legal requirements of the Voting Rights Act and Fair Maps Act. The current map configuration has disenfranchised communities of color by prioritizing the interests of one political party.

The OC PRA map has made communities of interest its top priority when drawing lines, considering the important testimonies of residents from communities that have been harmed by the current configuration.

The board needs to correct the significant legal problems with the current map configuration. I urge you to adopt the OC People's Redistricting Alliance map.

**Osborn, Rachael**

---

**From:** Phuong Vo <vophuong4@gmail.com>  
**Sent:** Tuesday, November 02, 2021 2:37 PM  
**To:** 2021 Orange County Redistricting  
**Subject:** I Support the OC PRA Map

**Follow Up Flag:** Follow up  
**Flag Status:** Completed

Attention: This email originated from outside the County of Orange. Use caution when opening attachments or links.

Hello,

My name is Phuong Vo and I am a resident of Long Beach, CA. I'm writing to support the OC People's Redistricting Alliance map. As the current map configuration stands, communities of color are disenfranchised because of the prioritization of the interests of one political party. Whereas the OC PRA map prioritizes communities that have been historically marginalized, corrects the problems with the current map configuration, and complies with the legal requirements of the Voting Rights Act and Fair Maps Act. The OC PRA map has made communities of interest its top priority when drawing lines. Including consideration of the important testimonies of residents from communities that have been harmed by the current map. The Board needs to correct the significant legal problems with the current map configuration, so I urge you to adopt the OC People's Redistricting Alliance map.

Best,

Phuong Vo

**Osborn, Rachael**

---

**From:** John Holmquist <jwholmquist@gmail.com>  
**Sent:** Tuesday, November 02, 2021 10:00 AM  
**To:** 2021 Orange County Redistricting  
**Subject:** California Citizens Redistricting Commision

**Follow Up Flag:** Follow up  
**Flag Status:** Completed

**Attention:** This email originated from outside the County of Orange. Use caution when opening attachments or links.

To whom it may concern:

I am a citizen and 35 year resident of Rossmoor. It is my strong belief that the unincorporated community of Rossmoor should in all matters and respects be governed by Orange County. Any consideration or proposal to place Rossmoor in a legislative district other than Orange County should be rejected immediately. Our neighboring cities of Los Alamitos and Seal Beach together comprise a tight knit, well-balanced community. All three are located in the County of Orange and share the Los Alamitos school district. Any redistricting with Long Beach or other communities in Los Angeles county makes no sense for any residents. Thank you!

John Holmquist  
2842 Walker Lee Drive  
Rossmoor, CA 90720  
562-773-9706

**Osborn, Rachael**

---

**From:** Response@ocgov.com on behalf of OC Clerk of the Board <Response@ocgov.com>  
**Sent:** Tuesday, November 02, 2021 9:55 AM  
**To:** 2021 Orange County Redistricting  
**Subject:** 2021 Redistricting Idea Form - ONLINE FORM SUBMISSION

**Follow Up Flag:** Follow up  
**Flag Status:** Completed

**Attention:** This email originated from outside the County of Orange. Use caution when opening attachments or links.

Submitted on Tue, 11/02/2021 - 09:55

Submitted by: Anonymous

Submitted values are:

**Name**

John Holmquist

**Organization**

Citizen

**Phone Number**

[5627739706](tel:5627739706)

**Email**

[jwholmquist@gmail.com](mailto:jwholmquist@gmail.com)

**City/County**

Rossmoor / Orange County

**My ideas/comments are as follows**

It is my strong belief that the unincorporated community of Rossmoor should in all matters and respects be governed by Orange County. Any consideration or proposal to place Rossmoor in a legislative district other than Orange County should be rejected immediately. Our neighboring cities of Los Alamitos and Seal Beach together comprise a tight knit, well-balanced community. All three are located in the County of Orange and share the Los Alamitos school district. Any redistricting with Long Beach or other communities in Los Angeles county makes no sense for any residents.

John Holmquist

**Osborn, Rachael**

---

**From:** Ryan Daliwal <ryandaliwal@outlook.com>  
**Sent:** Tuesday, November 02, 2021 9:19 AM  
**To:** 2021 Orange County Redistricting  
**Subject:** I Support the OC PRA Map

**Follow Up Flag:** Follow up  
**Flag Status:** Completed

**Attention:** This email originated from outside the County of Orange. Use caution when opening attachments or links.

My name is Ryan and I am a resident of Santa Ana. I'm writing to support the OC People's Redistricting Alliance map. As the current map configuration stands, communities of color are disenfranchised because of the prioritization of the interests of one political party. Whereas the OC PRA map prioritizes communities that have been historically marginalized, corrects the problems with the current map configuration, and complies with the legal requirements of the Voting Rights Act and Fair Maps Act. The OC PRA map has made communities of interest its top priority when drawing lines. Including consideration of the important testimonies of residents from communities that have been harmed by the current map. The Board needs to correct the significant legal problems with the current map configuration, so I urge you to adopt the OC People's Redistricting Alliance map.

Ryan Daliwal



**Osborn, Rachael**

---

**From:** Charles Victorio <charles1victorio@gmail.com>  
**Sent:** Tuesday, November 02, 2021 7:23 AM  
**To:** 2021 Orange County Redistricting; COB\_Response  
**Subject:** 11/2 BOS Meeting - Agenda Item: # 23

**Follow Up Flag:** Follow up  
**Flag Status:** Completed

**Attention:** This email originated from outside the County of Orange. Use caution when opening attachments or links.

Hello,

I have been advised by my healthcare professionals to continue to shelter at home during the COVID pandemic. I am also concerned that mask-wearing is not being enforced indoors during the meetings. This renders me unable to attend the Board meeting in person. Therefore, I am submitting my comments here and I ask that you accommodate my needs by reading these remarks into the record at the appropriate time.

Thank you for reading my comments, included below:

My name is Charles Victorio and I am a resident of Irvine. The way the current districts are set up, it is a partisan effort to disenfranchise communities of color. The map from the OC PRA is influenced by input from the community on how to improve the situation. I urge you to adopt the OC People's Redistricting Alliance map.

**Osborn, Rachael**

**From:** Marc Ang <marc@aib2b.org>  
**Sent:** Tuesday, November 02, 2021 3:24 AM  
**To:** 2021 Orange County Redistricting  
**Subject:** Support of Proposal 2 (45 parties included in this)

**Follow Up Flag:** Follow up  
**Flag Status:** Completed

**Attention:** This email originated from outside the County of Orange. Use caution when opening attachments or links.

45 signatories, some of who will show up today to speak but not all.

I support the Proposal 2 Map:

Timestamp	Name	Organization	Email	Phone	
10/27/2021 17:15:27	Dustin Lam	Former VAMHA	DI. <a href="mailto:CreativeConsultant@gmail.com">CreativeConsultant@gmail.com</a>	9495625542	92
10/28/2021 14:24:10	Jim Chen	AIB2B	<a href="mailto:Chengkai6@hotmail.com">Chengkai6@hotmail.com</a>	9495728178	92
10/28/2021 14:26:15	Joy chen	Chinese American Cultural Association-OC	<a href="mailto:Joylizhenchen@gmail.com">Joylizhenchen@gmail.com</a>	9493203134	92
10/28/2021 15:02:14	Sandra Dentice	OC resident	<a href="mailto:Sandradentice@gmail.com">Sandradentice@gmail.com</a>	9498856844	
10/28/2021 15:02:14	Michael Pestano	AIB2B	<a href="mailto:Ironeaglemike@gmail.com">Ironeaglemike@gmail.com</a>	4243356157	13 C
10/28/2021 15:15:43	James Mai	AAPI United	<a href="mailto:James@aapiunited.com">James@aapiunited.com</a>	9492160007	48 B A C

10/28/2021 15:25:01	Andrew Lee	None	<a href="mailto:andy.s.lee@gmail.com">andy.s.lee@gmail.com</a>	5627567608	36 Ir 92
10/28/2021 16:03:32	Connie Shu	Na	<a href="mailto:connieandtaz@yahoo.com">connieandtaz@yahoo.com</a>	7147572595	22 C D
10/28/2021 18:53:39	Andrew Cho	Law Office of Andrew S. Cho	<a href="mailto:andrew@ascholar.com">andrew@ascholar.com</a>	2138042212	12 S D F 92
10/28/2021 19:01:28	Bomi park	I support this and will tell other API voices/groups to support Proposal 2.	<a href="mailto:pianobomi@hotmail.com">pianobomi@hotmail.com</a>	7143363640	
10/29/2021 12:47:40	Irving Kau	KWCP	<a href="mailto:irving@elementzventures.com">irving@elementzventures.com</a>	9493715287	34 S Ir 92
10/29/2021 13:17:46	Crystal Jade	none	<a href="mailto:crystaljades@ymail.com">crystaljades@ymail.com</a>	9493746682	
10/29/2021 14:47:52	Gay De Perio	Asian Industries Business 2 Business	<a href="mailto:Points2Health@gmail.com">Points2Health@gmail.com</a>	7143511591	89 F D
10/29/2021 15:09:23	Thomas Endo	Asians	<a href="mailto:thomasaendo@gmail.com">thomasaendo@gmail.com</a>	7143459986	35 A S C C

10/29/2021 15:21:38	Michael Pestano	AIB2B	<a href="mailto:lroneaglemike@gmail.com">lroneaglemike@gmail.com</a>	4243356257	13 C G G 92
10/30/2021 19:28:12	Lael Sunny Meagher	EV Free Church Fullerton	<a href="mailto:sunny.lael@gmail.com">sunny.lael@gmail.com</a>	714-787-8238	50 V
10/30/2021 22:45:40	Yul Gevargis	Park Place	<a href="mailto:yul@roadrunner.com">yul@roadrunner.com</a>	16618603488	36 S P 90
10/31/2021 8:44:11	Dinah Lin	AIB2B	<a href="mailto:dinah.lin@gmail.com">dinah.lin@gmail.com</a>	9493785805	77 G B C
11/1/2021 12:40:03	Charlyn Park Hiebert	Hanmin Church	<a href="mailto:charcurt3@gmail.com">charcurt3@gmail.com</a>	3238208520	7 L S B C 43 B C
11/1/2021 12:54:30	Eric Ching	<a href="http://ericchingforcongress.com">ericchingforcongress.com</a>	<a href="mailto:ericcihng4congress@gmail.com">ericcihng4congress@gmail.com</a>	16269261988	22 E S C D W C
11/1/2021 13:24:03	Antao Chien	Antao Chien	<a href="mailto:antao2000@yahoo.com">antao2000@yahoo.com</a>	6262745488	D B
11/1/2021 19:16:04	Joseph Hwa	All Nations Jesus Church	<a href="mailto:Joseph.hwa8@gmail.com">Joseph.hwa8@gmail.com</a>	714 204 9944	12 R A F 92
11/1/2021 21:46:49	Harumi Lucak	N/A	<a href="mailto:chlucak@dslextreame.com">chlucak@dslextreame.com</a>	7146866058	55 L C 90

11/2/2021 0:21:03	Betty Chang	Corcoran Global Living	<a href="mailto:bchangrealty@gmail.com">bchangrealty@gmail.com</a>	5623310047	3 E R C
10/28/2021 16:27:50	<a href="mailto:SwoopsLopez@gmail.com">SwoopsLopez@gmail.com</a>	Daniel Lopez	D.E.S. Portuguese Hall of Artesia	<a href="mailto:SwoopsLopez@gmail.com">SwoopsLopez@gmail.com</a>	11 As Ar 90
10/28/2021 17:28:17	<a href="mailto:chriscaowsb@gmail.com">chriscaowsb@gmail.com</a>	Chris Cao	Five Rooster LLC	<a href="mailto:Chriscaowsb@gmail.com">Chriscaowsb@gmail.com</a>	12 Pe ga Gr 92
10/28/2021 17:32:10	<a href="mailto:Lkkn714@gmail.com">Lkkn714@gmail.com</a>	Kinh Nguyen		<a href="mailto:Lkkn714@gmail.com">Lkkn714@gmail.com</a>	11 Ke W Gr
10/30/2021 11:02:12	<a href="mailto:tjwinger@hotmail.com">tjwinger@hotmail.com</a>	Tim Winger		<a href="mailto:tjwinger@hotmail.com">tjwinger@hotmail.com</a>	71 Jo Sa CA

10/30/2021 18:00:03	<a href="mailto:anncoil@att.net">anncoil@att.net</a>	Ann Coil	None	I support this new district	20 Dr An 92
10/30/2021 20:16:22	<a href="mailto:lasims17@gmail.com">lasims17@gmail.com</a>	Larry Sims	Build a better you	<a href="mailto:Lasims17@gmail.com">Lasims17@gmail.com</a>	34 W Irv 92
11/1/2021 0:09:48	<a href="mailto:uskoreaone@gmail.com">uskoreaone@gmail.com</a>	Jacob Woo H. Lee	Coral Ridge Korean Presbyterian Church	<a href="mailto:uskoreaone@gmail.com">uskoreaone@gmail.com</a>	60 B A
11/1/2021 9:28:30	<a href="mailto:zetnomlegna@gmail.com">zetnomlegna@gmail.com</a>	Angelo Montez	Retired	<a href="mailto:zetnomlegna@gmail.com">zetnomlegna@gmail.com</a>	74 Se Tv Pa 92
11/1/2021 10:22:14	<a href="mailto:chlucak@dslextreme.com">chlucak@dslextreme.com</a>	Harumi Lucak	N/A		
11/1/2021 11:58:21	<a href="mailto:dave@rodecker.com">dave@rodecker.com</a>	David Rodecker	Relevant Ads	<a href="mailto:dave@rodecker.com">dave@rodecker.com</a>	18 S S
11/1/2021 13:19:27	<a href="mailto:hiebert.curtis@gmail.com">hiebert.curtis@gmail.com</a>	Curtis Hiebert	Charagape Ministry	<a href="mailto:Hiebert.curtis@gmail.com">Hiebert.curtis@gmail.com</a>	71 Lin Bu CA
11/1/2021 14:54:27	<a href="mailto:hiebert.curtis@gmail.com">hiebert.curtis@gmail.com</a>	Charlyn Hiebert	Charagape Ministries	<a href="mailto:hiebert.curtis@gmail.com">hiebert.curtis@gmail.com</a>	71 Lin Bu CA
11/1/2021 15:06:52	<a href="mailto:chlucak@dslextreme.com">chlucak@dslextreme.com</a>	Harumi Lucak			59 Av Cy 90
11/1/2021 16:13:31	<a href="mailto:lwissink@sbcglobal.net">lwissink@sbcglobal.net</a>	Leah Wissink		<a href="mailto:Lwissink@sbcglobal.net">Lwissink@sbcglobal.net</a>	12 Lin Fu 92
11/1/2021 21:52:32	<a href="mailto:chlucak@dslextreme.com">chlucak@dslextreme.com</a>	Harumi Lucak			59 Av Cy CA
11/1/2021 22:05:31	<a href="mailto:jdssoup@reagan.com">jdssoup@reagan.com</a>	Jan Campbell		<a href="mailto:jdssoup@reagan.com">jdssoup@reagan.com</a>	Lo Al 90
11/1/2021 22:33:49	<a href="mailto:jenice8@icloud.com">jenice8@icloud.com</a>	Jenice Anderson	Asian	<a href="mailto:jenice8@icloud.com">jenice8@icloud.com</a>	44 Ha Av Be
11/1/2021 23:01:57	<a href="mailto:jbc3rd@gmail.com">jbc3rd@gmail.com</a>	Beth Culver	Retired	<a href="mailto:jbc3rd@gmail.com">jbc3rd@gmail.com</a>	4 M
11/1/2021 23:58:59	<a href="mailto:tanggexin@yahoo.com">tanggexin@yahoo.com</a>	Gexin Tang	We Save America	<a href="mailto:tanggexin@yahoo.com">tanggexin@yahoo.com</a>	48 Co Irv 92

11/2/2021 0:02:38	<a href="mailto:Mge991@yahoo.com">Mge991@yahoo.com</a>	Ming Ge	Gexin & Associate, Inc	<a href="mailto:Mge991@yahoo.com">Mge991@yahoo.com</a>	38 Irv 92
----------------------	--	---------	------------------------	--	-----------------

---

Investment Advisory Services are not offered through Mangus Finance. This is not an offer of securities in any jurisdiction, nor is it specifically directed to a resident of any jurisdiction. As with any security, request a prospectus from your registered representative. Read it carefully before you invest or send money. CA Insurance License 0K34974.

This email may contain concepts that have legal, accounting and tax implications. It is not intended to provide legal, accounting or tax advice. You may wish to consult a competent attorney, tax advisor or accountant.

45 signatories, some of who will show up today to speak but not all.

I support the Proposal 2 Map:

Timestamp	Name	Organization	Email	Phone	Address, City and Zip	Personal Comments
10/27/2021 17:15	Dustin Lam	Former VAMHA	<a href="mailto:DL.CreativeConsultant@gmail.com">DL.CreativeConsultant@gmail.com</a>	9495625542	9126 Washington Ave Westminster 92683	Nothing
10/28/2021 14:24	Jim Chen	AIB2B	<a href="mailto:Chengkai6@hotmail.com">Chengkai6@hotmail.com</a>	9495728178	25951 sheriff road, Laguna hills, Ca 92653	And I am a property owner in the city of Garden Grove. It would be very important for our community to have a strong voice in this district.
10/28/2021 14:26	Joy chen	Chinese American Cultural Association- OC	<a href="mailto:Joylizhenchen@gmail.com">Joylizhenchen@gmail.com</a>	9493203134	25951 sheriff road, Laguna Hills, Ca 92653	It is extremely crucial that the Asian Community finally has a strong voice in Orange County to protect our historical interests.
10/28/2021 15:02	Sandra Dentice	OC resident	<a href="mailto:Sandradentice@gmail.com">Sandradentice@gmail.com</a>	9498856844	92656	I fully support this
10/28/2021 15:02	Michael Pestano	AIB2B	<a href="mailto:lroneagle mike@gmail.com">lroneagle mike@gmail.com</a>	4243356157	13191 Coleman Pl	Let's do this
10/28/2021 15:15	James Mai	AAPU United	<a href="mailto:James@aapiunited.com">James@aapiunited.com</a>	9492160007	4852 Barkwood Ave Irvine CA 92604	Please please please recognize this district and it's needs for the community which are unique
10/28/2021 15:25	Andrew Lee	None	<a href="mailto:andy.s.lee@gmail.com">andy.s.lee@gmail.com</a>	5627567608	36 Twiggs, Irvine, 92620	Asian representation is overdue.
10/28/2021 16:03	Connie Shu	Na	<a href="mailto:connieandaz@yahoo.com">connieandaz@yahoo.com</a>	7147572595	22492 Costa Bella Dr	
10/28/2021 18:53	Andrew Cho	Law Office of Andrew S. Cho	<a href="mailto:andrew@ascholaw.com">andrew@ascholaw.com</a>	2138042212	1296 Sheller Drive, Fullerton 92833	Keep District 4 Asian!
10/28/2021 19:01	Bomi park	I support this and will tell other API voices/groups to support Proposal 2.	<a href="mailto:pianobomi@hotmail.com">pianobomi@hotmail.com</a>	7143363640	90621	I support this and will tell other API voices/groups to support Proposal 2.
10/29/2021 12:47	Irving Kau	KWCP	<a href="mailto:irving@elementzventures.com">irving@elementzventures.com</a>	9493715287	3461 Eboe Street, Irvine, CA 92606	
10/29/2021 13:17	Crystal Jade	none	<a href="mailto:crystaljades@ymail.com">crystaljades@ymail.com</a>	9493746682	92629	better representation
10/29/2021 14:47	Gay De Perio	Asian Industries Business 2 Business	<a href="mailto:Points2Health@gmail.com">Points2Health@gmail.com</a>	7143511591	8922 Ernest Fulsom Drive	I have lived in Orange County for 51 years. It is important to have my voice heard in this district. My concern is that the undocumented migrants will be heard over my voice as a concerned American Naturalized citizen. Give us a voice, and let us be heard. Thank you.



10/29/2021 15:09	Thomas Endo	Asians	<a href="mailto:thomasaendo@gmail.com">thomasaendo@gmail.com</a>	7143459986	350 Avocado Street H2 Costa Mesa CA 92627	As an Asian-American we use the right to have our voices heard via the 1st Amendment to make aware our particular needs as a set of cultures based in the Far East, India, and the Pacific Islands.
10/29/2021 15:21	Michael Pestano	AIB2B	<a href="mailto:lroneaglemike@gmail.com">lroneaglemike@gmail.com</a>	4243356257	13191 Coleman Pl, Garden Grove, CA 92843	
10/30/2021 19:28	Lael Sunny Meagher	EV Free Church Fullerton	<a href="mailto:sunny.lael@gmail.com">sunny.lael@gmail.com</a>	714-787-8238	5061 Manor View Dr	n/a
10/30/2021 22:45	Yul Gevargis	Park Place	<a href="mailto:yul@roadrunner.com">yul@roadrunner.com</a>	16618603488	36020 32nd Street East P.O Box 900695	I support this and will tell other API voices to support proposal 2.
10/31/2021 8:44	Dinah Lin	AIB2B	<a href="mailto:dinah.lin@gmail.com">dinah.lin@gmail.com</a>	9493785805	7725 Gateway Blvd. Irvine, CA 92618	I support this important initiative for the Asian community
11/1/2021 12:40	Charlyn Park Hiebert	Hanmin Church	<a href="mailto:charcurt3@gmail.com">charcurt3@gmail.com</a>	3238208520	7151 W. Lincoln Street Buena Park. CA 90620, 4334 York Blvd. LA, CA 90041	I support OC's growing north-western API communities, especially in cities like Garden Grove, Fullerton, Westminster and Fountain Valley.
11/1/2021 12:54	Eric Ching	<a href="http://ericchingforcongress.com">ericchingforcongress.com</a>	<a href="mailto:ericchng4congress@gmail.com">ericchng4congress@gmail.com</a>	16269261988	22077 EAST SNOW CREEK DRIVE, WALNUT, CA 91789	I believe in serving the public by putting God first and people's interests first.
11/1/2021 13:24	Antao Chien	Antao Chien	<a href="mailto:antao2000@yahoo.com">antao2000@yahoo.com</a>	6262745488	Diamond Bar 91765	Support
11/1/2021 19:16	Joseph Hwa	All Nations Jesus Church	<a href="mailto:Joseph.hwa8@gmail.com">Joseph.hwa8@gmail.com</a>	714 204 9944	1213 n Raymond Ave, Fullerton 92831	I support!
11/1/2021 21:46	Harumi Lucak	N/A	<a href="mailto:chlucak@dslexreme.com">chlucak@dslexreme.com</a>	7146866058	5912 Lemon Ave, Cypress, Ca 90630	Please vote for Orange County BOS Redistricting proposal #2.
						1. This map proposal creates the strongest API district of any proposal
						2. Connects OC's growing north-western API communities
						3. Strongest possible configuration to empower API voices
						4. It is legally sound and creates a Latino VRA district as required by law
						5. This will help the Asian community in the next 10 years as these lines will be set.
						Thank you in advance for your time and dedication to the redistricting process

11/2/2021 0:21	Betty Chang	Corcoran Global Living	<a href="mailto:bchangrealty@gmail.com">bchangrealty@gmail.com</a>	5623310047	3172 Ruth Elaine, Rossmoor, CA90720	I strongly support Proposal 2 Map for Orange Supervisor District 4.
10/28/2021 16:27	<a href="mailto:SwoopsLopez@gmail.com">SwoopsLopez@gmail.com</a>	Daniel Lopez	D.E.S. Portuguese Hall of Artesia	<a href="mailto:SwoopsLopez@gmail.com">SwoopsLopez@gmail.com</a>	11903 Ashworth St, Artesia, CA 90701	
10/28/2021 17:28	<a href="mailto:chriscaowsb@gmail.com">chriscaowsb@gmail.com</a>	Chris Cao	Five Rooster LLC	<a href="mailto:Chriscaowsb@gmail.com">Chriscaowsb@gmail.com</a>	12172 Pearce ave garden Grove, CA 92843	
10/28/2021 17:32	<a href="mailto:Lkkn714@gmail.com">Lkkn714@gmail.com</a>	Kinh Nguyen		<a href="mailto:Lkkn714@gmail.com">Lkkn714@gmail.com</a>	11421 Kearney Way, Garden Grove 92840	
10/30/2021 11:02	<a href="mailto:tjwinger@hotmail.com">tjwinger@hotmail.com</a>	Tim Winger		<a href="mailto:tjwinger@hotmail.com">tjwinger@hotmail.com</a>	719 W Jonquil Rd, Santa Ana, CA 92706	
10/30/2021 18:00	<a href="mailto:anncoil@att.net">anncoil@att.net</a>	Ann Coil	None	I support this new district	2024 Victoria Dr Santa Ana CA 92706	
10/30/2021 20:16	<a href="mailto:lasims17@gmail.com">lasims17@gmail.com</a>	Larry Sims	Build a better you	<a href="mailto:Lasims17@gmail.com">Lasims17@gmail.com</a>	34 Queens Wreath Way, Irvine CA 92612	
11/1/2021 0:09	<a href="mailto:uskoreaone@gmail.com">uskoreaone@gmail.com</a>	Jacob Woo H. Lee	Coral Ridge Korean Presbyterian Church	<a href="mailto:uskoreaone@gmail.com">uskoreaone@gmail.com</a>	6642 Burnham Ave	
11/1/2021 9:28	<a href="mailto:zetnomlegna@gmail.com">zetnomlegna@gmail.com</a>	Angelo Montez	Retired	<a href="mailto:zetnomlegna@gmail.com">zetnomlegna@gmail.com</a>	74850 Serrano Dr, Twentynine Palms, CA, 92277	
11/1/2021 10:22	<a href="mailto:chlucak@dslextre.me">chlucak@dslextre.me</a>	Harumi Lucak	N/A			
11/1/2021 11:58	<a href="mailto:dave@rodecker.com">dave@rodecker.com</a>	David Rodecker	Relevant Ads	<a href="mailto:dave@rodecker.com">dave@rodecker.com</a>	18241 Santa Sophia Cir	
11/1/2021 13:19	<a href="mailto:hiebert.curtis@gmail.com">hiebert.curtis@gmail.com</a>	Curtis Hiebert	Charagape Ministry	<a href="mailto:Hiebert.curtis@gmail.com">Hiebert.curtis@gmail.com</a>	7151 W. Lincoln Ave. Buena Park, CA 90620	
11/1/2021 14:54	<a href="mailto:hiebert.curtis@gmail.com">hiebert.curtis@gmail.com</a>	Charlyn Hiebert	Charagape Ministries	<a href="mailto:hiebert.curtis@gmail.com">hiebert.curtis@gmail.com</a>	7151 W. Lincoln Ave. Buena Park, CA 90620	
11/1/2021 15:06	<a href="mailto:chlucak@dslextre.me">chlucak@dslextre.me</a>	Harumi Lucak			5912 Lemon Ave, Cypress, CA 90630	
11/1/2021 16:13	<a href="mailto:lwissink@sbcglobal.net">lwissink@sbcglobal.net</a>	Leah Wissink		<a href="mailto:Lwissink@sbcglobal.net">Lwissink@sbcglobal.net</a>	1231 N Lincoln Ave. Fullerton 92831	
11/1/2021 21:52	<a href="mailto:chlucak@dslextre.me">chlucak@dslextre.me</a>	Harumi Lucak			5912 Lemon Ave, Cypress, CA-90630	
11/1/2021 22:05	<a href="mailto:jdssoup@reagan.com">jdssoup@reagan.com</a>	Jan Campbell		<a href="mailto:jdssoup@reagan.com">jdssoup@reagan.com</a>	Los Alamitos, 90720	
11/1/2021 22:33	<a href="mailto:jenice8@icloud.com">jenice8@icloud.com</a>	Jenice Anderson	Asian	<a href="mailto:jenice8@icloud.com">jenice8@icloud.com</a>	4424 Hazelnut Ave Seal Beach 90740	
11/1/2021 23:01	<a href="mailto:jbc3rd@gmail.com">jbc3rd@gmail.com</a>	Beth Culver	Retired	<a href="mailto:jbc3rd@gmail.com">jbc3rd@gmail.com</a>	4412 Via Majorca	
11/1/2021 23:58	<a href="mailto:tanggexin@yahoo.com">tanggexin@yahoo.com</a>	Gexin Tang	We Save America	<a href="mailto:tanggexin@yahoo.com">tanggexin@yahoo.com</a>	4892 Corkwood, Irvine, Ca 92612	
11/2/2021 0:02	<a href="mailto:Mge991@yahoo.com">Mge991@yahoo.com</a>	Ming Ge	Gexin & Associate, Inc	<a href="mailto:Mge991@yahoo.com">Mge991@yahoo.com</a>	38 Butler , Irvine, Ca 92612	

**Osborn, Rachael**

---

**From:** Nathan Hayden <allmodcons@protonmail.com>  
**Sent:** Tuesday, November 02, 2021 12:33 AM  
**To:** 2021 Orange County Redistricting  
**Subject:** People's Redistricting Alliance of Orange County

**Follow Up Flag:** Follow up  
**Flag Status:** Completed

**Attention:** This email originated from outside the County of Orange. Use caution when opening attachments or links.

My name is Nathan Hayden and I am a resident of Irvine. I support the OC People's Redistricting Alliance Supervisorial map. This map prioritizes communities that have been historically marginalized, corrects the problems with the current configuration, and complies with the legal requirements of the Voting Rights Act and Fair Maps Act. The current map configuration has disenfranchised communities of color by prioritizing the interests of one political party.

The OC PRA map has made communities of interest its top priority when drawing lines, considering the important testimonies of residents from communities that have been harmed by the current configuration.

The board needs to correct the significant legal problems with the current map configuration. I urge you to adopt the OC People's Redistricting Alliance map.

Thank you

**Osborn, Rachael**

---

**From:** Response@ocgov.com on behalf of OC Clerk of the Board <Response@ocgov.com>  
**Sent:** Monday, November 01, 2021 11:47 PM  
**To:** 2021 Orange County Redistricting  
**Subject:** 2021 Redistricting Idea Form - ONLINE FORM SUBMISSION

**Follow Up Flag:** Follow up  
**Flag Status:** Completed

**Attention:** This email originated from outside the County of Orange. Use caution when opening attachments or links.

Submitted on Mon, 11/01/2021 - 23:46

Submitted by: Anonymous

Submitted values are:

**Name**

Cierra Nevada

**My ideas/comments are as follows**

Dear members of OC BOS:

I am writing this to request your support in voting for redistricting proposal map #2

1. This map proposal creates the strongest Asian Pacific Islander district of any proposal, unifying and focused on our common Asian needs.
2. Connects Orange County's growing north-western Asian Pacific Islander communities, especially in cities like Garden Grove, Fullerton, Westminster and Fountain Valley.
3. It is the strongest possible configuration to empower API voices as a whole.
4. It is legally sound and creates a Latino Voting Rights Act district as required by law

Communities of interest deserve local representation that advocates for their needs and values and promotes opportunities for them. I hope the immigrant communities of Orange County can look forward to a local government that serves and represents them well by adopting the proposal #2 map.

The map #2 also keeps Los Alamitos Unified School District intact,, as it covers three cities- Seal Beach, Los Alamitos and Rossmoor.

Please vote in favor of proposal map #2. Thank you very much,

**Osborn, Rachael**

---

**From:** Chelsea Boyle <cdrake1221@yahoo.com>  
**Sent:** Monday, November 01, 2021 6:40 PM  
**To:** 2021 Orange County Redistricting  
**Subject:** I Support the OC PRA Map

**Follow Up Flag:** Follow up  
**Flag Status:** Completed

Attention: This email originated from outside the County of Orange. Use caution when opening attachments or links.

My name is Chelsea Boyle and I am a resident of Irvine. I'm writing to support the OC People's Redistricting Alliance map. As the current map configuration stands, communities of color are disenfranchised because of the prioritization of the interests of one political party. Whereas the OC PRA map prioritizes communities that have been historically marginalized, corrects the problems with the current map configuration, and complies with the legal requirements of the Voting Rights Act and Fair Maps Act. The OC PRA map has made communities of interest its top priority when drawing lines. Including consideration of the important testimonies of residents from communities that have been harmed by the current map. The Board needs to correct the significant legal problems with the current map configuration, so I urge you to adopt the OC People's Redistricting Alliance map. Thank you.

**Osborn, Rachael**

---

**From:** Chris Jeong <seyunjeong0130@icloud.com>  
**Sent:** Monday, November 01, 2021 5:15 PM  
**To:** 2021 Orange County Redistricting  
**Subject:** I Support the OC PRA Map

**Follow Up Flag:** Follow up  
**Flag Status:** Completed

Attention: This email originated from outside the County of Orange. Use caution when opening attachments or links.

My name is Chris Jeong and I am a resident of Irvine, CA. I'm writing to support the OC People's Redistricting Alliance map. As the current map configuration stands, communities of color are disenfranchised because of the prioritization of the interests of one political party. Whereas the OC PRA map prioritizes communities that have been historically marginalized, corrects the problems with the current map configuration, and complies with the legal requirements of the Voting Rights Act and Fair Maps Act. The OC PRA map has made communities of interest its top priority when drawing lines. Including consideration of the important testimonies of residents from communities that have been harmed by the current map. The Board needs to correct the significant legal problems with the current map configuration, so I urge you to adopt the OC People's Redistricting Alliance map.

Sent from my iPhone

**Osborn, Rachael**

---

**From:** Chris Lucak <chlucak@dslextrreme.com>  
**Sent:** Monday, November 01, 2021 3:24 PM  
**To:** 2021 Orange County Redistricting  
**Subject:** Please support Proposal #2 for BOS redistricting

**Follow Up Flag:** Follow up  
**Flag Status:** Completed

**Attention:** This email originated from outside the County of Orange. Use caution when opening attachments or links.

Dear members of Orange County Board of supervisors:

I am writing this to give full support to the proposal #2 redistricting.  
Being an american of Asian descent I believe the proposal #2 redistricting map:

1. Creates the strongest API district of any proposal
2. Connects OC's growing north-western API communities
3. Strongest possible configuration to empower API voices
4. It is legally sound and creates a Latino VRA district as required by law
5. This will help the Asian community in the next 10 years as these lines will be set.

Thank you very much in advance for considering my support for the proposal #2 map.  
Sincerely,  
Harumi Lucak

**Osborn, Rachael**

---

**From:** Response@ocgov.com on behalf of OC Clerk of the Board <Response@ocgov.com>  
**Sent:** Monday, November 01, 2021 2:54 PM  
**To:** 2021 Orange County Redistricting  
**Subject:** 2021 Redistricting Idea Form - ONLINE FORM SUBMISSION

**Follow Up Flag:** Follow up  
**Flag Status:** Completed

**Attention:** This email originated from outside the County of Orange. Use caution when opening attachments or links.

Submitted on Mon, 11/01/2021 - 14:53

Submitted by: Anonymous

Submitted values are:

**Name**

Ron Kirkpatrick

**Phone Number**

[\(562\) 370-0064](tel:(562)370-0064)

**Email**

[kpatrick@verizon.net](mailto:kpatrick@verizon.net)

**City/County**

Rossmoor

**My ideas/comments are as follows**

My name is Ron Kirkpatrick and I live in Rossmoor and I'm a member of the Rossmoor Homeowners Association (RHA). I am against proposals that would separate Rossmoor from our neighbors in Los Alamitos and Seal Beach. We all share a school district, infrastructure and commerce and, in many ways, share common goals. As a result I am against maps 1, 6 and 8. I agree with Los Alamitos Unified School Superintendent Dr. Andrew Pulver that Map 7 is the best for our shared area. It splits our cities and communities the least of all 8 maps. Thank you for your consideration