



# **2021 REDISTRICTING**

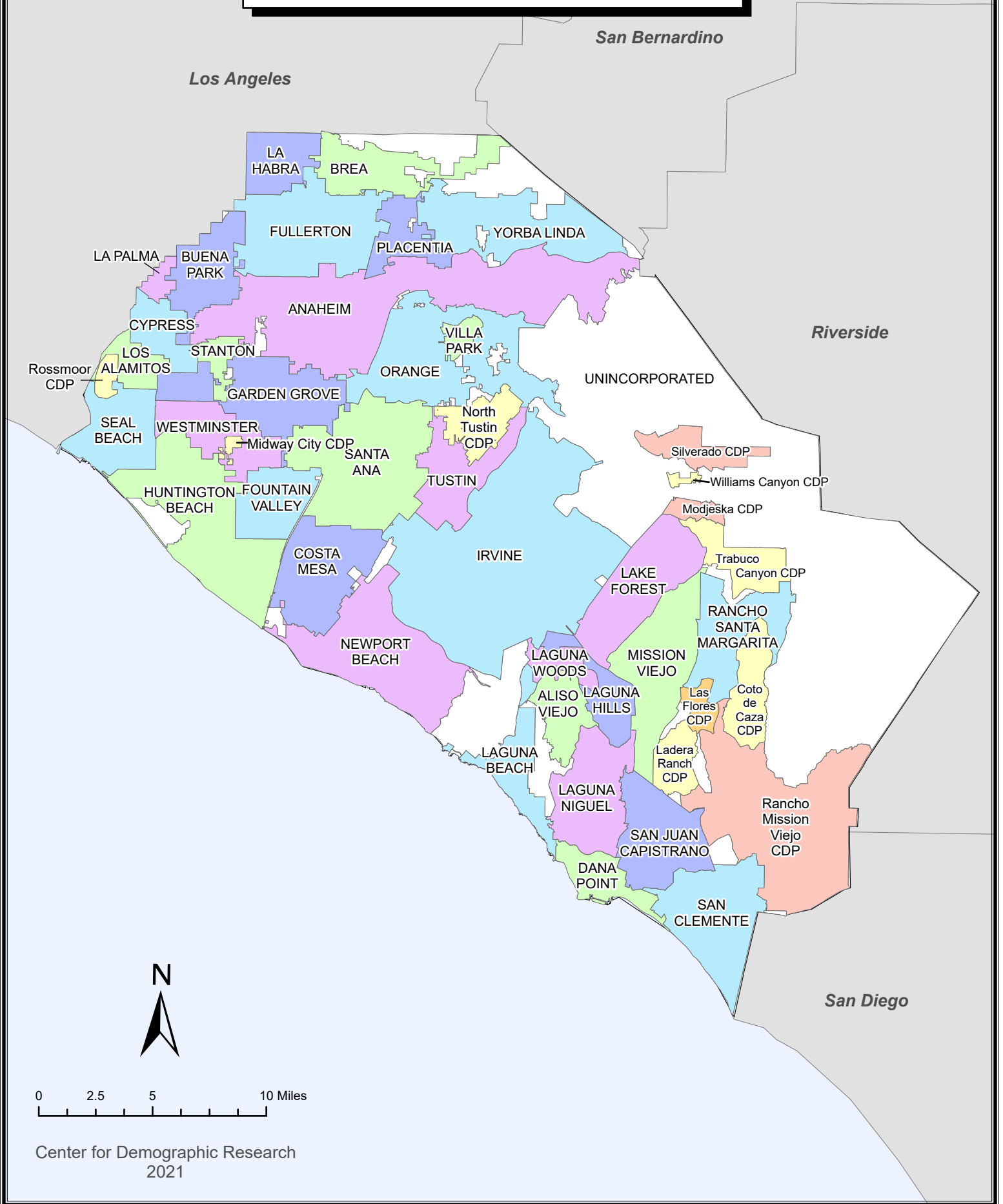
[www.ocgov.com/redistricting](http://www.ocgov.com/redistricting)

## **County of Orange Supervisory District Revised Proposals and Technical Corrections**

**November 9, 2021**



# 2020 Census Places Orange County, California



**County of Orange 2021 Redistricting  
Supervisory District Summary of Revised Proposals**

**Prepared for November 9, 2021 Board Meeting**

<b>Proposal</b>	<b>Author</b>	<b>Percent Spread</b>	<b>Number of Split Cities (of 34 total)</b>	<b>Number of Split CDPs (of 11 total)</b>	<b>Technical Adjustment Needed?</b>	<b>Santa Ana/Tustin Fix Needed?</b>
2- Technical Corrections	Rosio Viguera (original author) / with 11/2/2021 Board-directed Technical Corrections	1.95%	8	0	Done	Done
4- Technical Corrections	Sam Hoang (original author) / with 11/2/2021 Board-directed Technical Corrections	3.85%	12	0	Done	Not needed
2A	Nick Anas, Office of Supervisor Katrina Foley, Second District	6.46%	9	0	Yes	Needed
4A	James Dinwiddie, Office of Supervisor Lisa A. Bartlett, Fifth District	3.90%	10	0	Yes	Not needed
4B	Nick Anas, Office of Supervisor Katrina Foley, Second District	5.00%	13	1	Yes	Not needed
4C	LaShe Rodriguez, Office of Vice Chairman Doug Chaffee, Fourth District	7.03%	14	0	Yes	Not needed
5A	LaShe Rodriguez, Office of Vice Chairman Doug Chaffee, Fourth District	9.76%	6	1	No	Not needed
5B	Tara Campbell, Office of Supervisor Donald P. Wagner, Third District	9.63%	6	0	Yes	Not needed

CDP- Census Designated Place

**Notes:**

Technical Adjustments refer to instances where a portion of a city or CDP is split into multiple districts and one of those district assignments contains an area that is unpopulated.

The U.S. Census Bureau misassigned three (3) census blocks to the City of Tustin that are actually in the City of Santa Ana with a total of 260 population.

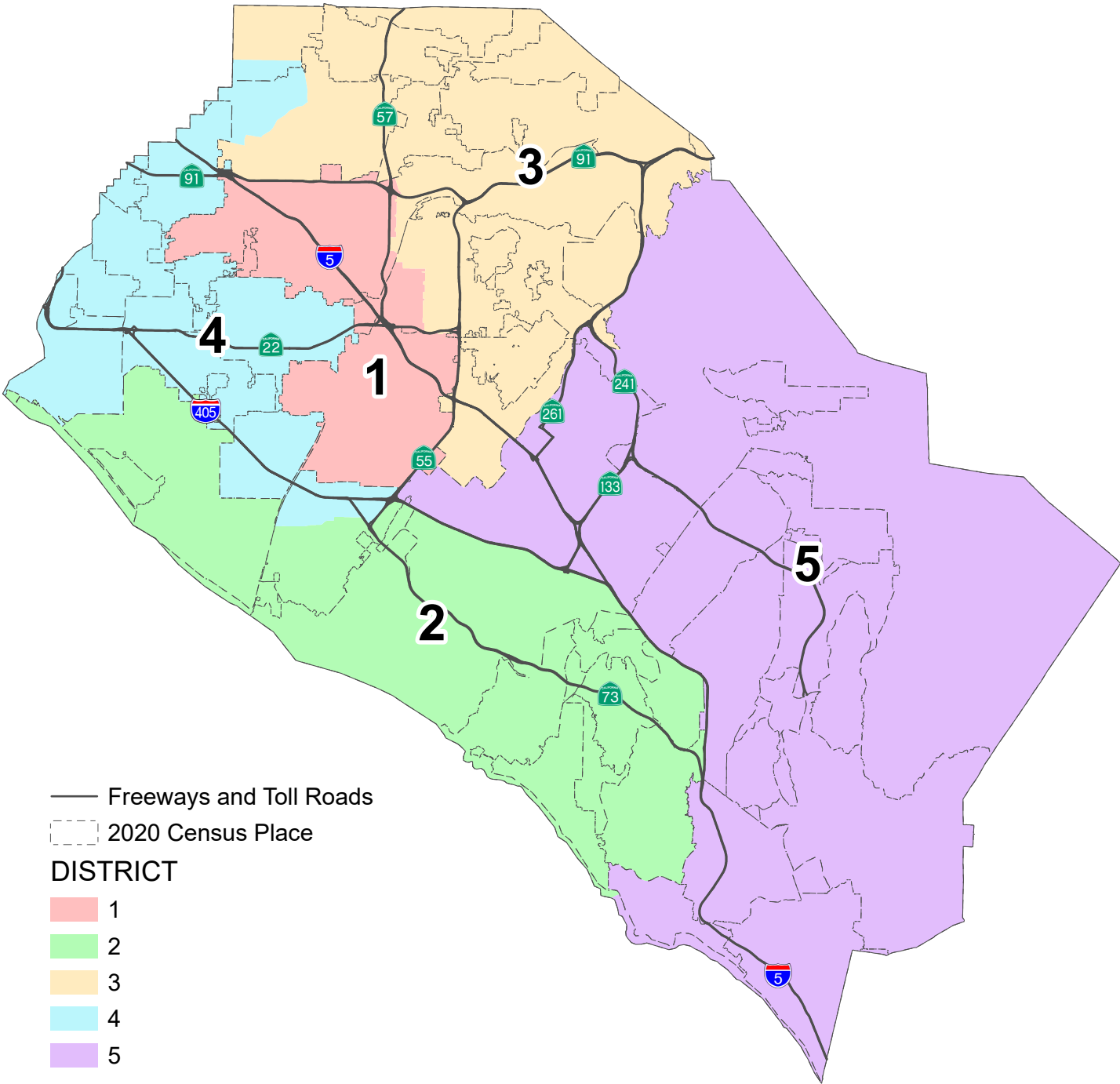
The Board of Supervisors took action on November 2, 2021 to make technical corrections to reduce unpopulated city/CDP splits and correct the Santa Ana/Tustin error in the initial set of plans submitted by the October 15, 2021 deadline and moved forward on November 2, 2021.

This page is intentionally left blank



County of Orange 2021 Redistricting

Proposal 2 Map (Technical Corrections)



This page is intentionally left blank

## PROPOSAL 2 with Technical Corrections County of Orange 2021 Redistricting

**Table 1. Adjusted 2020 Census Total Population by Race/Ethnicity**

District	Total Population	Hispanic or Latino of any Race	Non-Hispanic White	Non-Hispanic Black or African-American	Non-Hispanic American Indian or Alaska Native	Non-Hispanic Asian	Non-Hispanic Native Hawaiian or Other Pacific Islander	Non-Hispanic Some Other Race	Non-Hispanic Two or More Races
1	635,165	431,516	83,847	11,247	1,120	92,084	1,983	2,324	11,044
	100.0%	67.9%	13.2%	1.8%	0.2%	14.5%	0.3%	0.4%	1.7%
2	638,698	124,451	373,482	8,653	1,017	91,998	1,203	3,721	34,173
	100.0%	19.5%	58.5%	1.4%	0.2%	14.4%	0.2%	0.6%	5.4%
3	640,860	232,073	250,543	10,713	1,198	116,551	1,081	3,161	25,540
	100.0%	36.2%	39.1%	1.7%	0.2%	18.2%	0.2%	0.5%	4.0%
4	632,903	189,327	163,660	10,423	985	243,208	2,601	2,532	20,167
	100.0%	29.9%	25.9%	1.6%	0.2%	38.4%	0.4%	0.4%	3.2%
5	645,384	112,914	328,596	8,907	1,005	155,426	869	3,349	34,318
	100.0%	17.5%	50.9%	1.4%	0.2%	24.1%	0.1%	0.5%	5.3%
COUNTY TOTAL	3,193,010	1,090,281	1,200,128	49,943	5,325	699,267	7,737	15,087	125,242
	100.0%	34.1%	37.6%	1.6%	0.2%	21.9%	0.2%	0.5%	3.9%

**Table 2. Difference from 2021 Target Supervisorial District Population of 638,602**

District	Number	Percent	Percentage Spread (Largest - Smallest)
1	-3,437	-0.54%	1.95%
2	96	0.02%	
3	2,258	0.35%	
4	-5,699	-0.89%	
5	6,782	1.06%	

### Split Cities/Census Designated Places (CDPs) -

Anaheim (2)  
Costa Mesa (2)  
Fullerton (2)  
Garden Grove (2)  
Irvine (2)  
La Habra (2)  
Orange (2)  
Santa Ana (2)

Percent shares calculated using unrounded numbers, but table displays only to tenths; therefore, percents displayed may not sum to 100%.

Number in ( ) indicates number of Supervisorial Districts the city/CDP falls within.

Proposal 2 with Technical Corrections includes the 11/2/2021 Board-directed technical corrections to U.S. Census Bureau's misassignment three (3) census blocks to the City of Tustin that are actually in the City of Santa Ana with a total of 260 population and the correction of city/CDP splits in unpopulated areas.

**PROPOSAL 2 with Technical Corrections**  
**County of Orange 2021 Redistricting**

**Table 3. Adjusted Citizen Voting Age Population (CVAP) by Race/Ethnicity, 2015-2019 5-Year Estimates**

District	Total Estimated CVAP	Hispanic or Latino of any Race	Non- Hispanic White	Non-Hispanic Black or African- American	Non-Hispanic American Indian or Alaska Native	Non- Hispanic Asian	Non-Hispanic Native Hawaiian or Other Pacific Islander	Non- Hispanic Two or More Races
<b>1</b>	342,647	182,646	82,086	8,680	549	61,589	1,684	3,761
	100.0%	53.6%	24.1%	2.5%	0.2%	18.1%	0.5%	1.1%
<b>2</b>	461,397	65,499	317,620	7,136	1,007	56,548	937	11,736
	100.0%	14.2%	69.0%	1.5%	0.2%	12.3%	0.2%	2.5%
<b>3</b>	425,225	115,039	224,926	8,587	594	66,803	681	7,890
	100.0%	27.1%	53.0%	2.0%	0.1%	15.7%	0.2%	1.9%
<b>4</b>	423,111	91,915	155,251	8,794	917	155,464	1,650	8,430
	100.0%	21.8%	36.8%	2.1%	0.2%	36.8%	0.4%	2.0%
<b>5</b>	413,296	55,816	266,678	6,358	866	70,988	615	11,236
	100.0%	13.5%	64.6%	1.5%	0.2%	17.2%	0.1%	2.7%
<b>COUNTY TOTAL</b>	2,065,676	510,915	1,046,561	39,555	3,933	411,392	5,567	43,053
	100.0%	24.8%	50.8%	1.9%	0.2%	20.0%	0.3%	2.1%

Source: Statewide Database 2015-2019 Citizen Voting Age Population, adjusted to reflect reallocated incarcerated persons, on 2020 Census Blocks, Revised 9/27/2021 <https://statewidedatabase.org/redistricting2021/counties.html>

Notes: Percentages are calculated from sum of individual categories, not Total Estimated CVAP.

Because this is a special tabulation of data and not part of the standard data products shown on the Census Bureau's data.census.gov website, these estimates are rounded. Therefore, individual categories may not exactly add to the total.

For example, the sum of each of the race groups for non-Hispanics may not be the same as the estimate given for non-Hispanics. These estimates will not match counts from the 2020 Census.

The original data source for the Citizen Voting Age Population (CVAP) is the American Community Survey (ACS). The ACS is an ongoing survey by the U.S. Census Bureau sent to approximately 250,000 households each month.

The ACS estimates used to develop these data were collected from January 1, 2015 to December 31, 2019 utilizing the 2010 Census block groups, which were disaggregated to the 2020 Census blocks by the Statewide Database.

For more information about the CVAP products, visit <https://www.census.gov/programs-surveys/decennial-census/about/voting-rights/cvap.html> and

[https://www2.census.gov/programs-surveys/decennial/rdo/technical-documentation/special-tabulation/CVAP\\_2015-2019\\_ACS\\_documentation.pdf](https://www2.census.gov/programs-surveys/decennial/rdo/technical-documentation/special-tabulation/CVAP_2015-2019_ACS_documentation.pdf)

## PROPOSAL 2 with Technical Corrections

### County of Orange 2021 Redistricting

**Table 4. Adjusted 2020 Census Population by District and 2020 Census Place**

#### DISTRICT 1

Place	Total Population	Percent of District
Anaheim*	278,540	43.9%
Garden Grove*	146	0.0%
Orange*	34,238	5.4%
Santa Ana*	311,366	49.0%
Unincorporated	10,875	1.7%
<b>District 1 Total</b>	<b>635,165</b>	<b>100.0%</b>

#### DISTRICT 2

Place	Total Population	Percent of District
Aliso Viejo	52,222	8.2%
Costa Mesa*	79,591	12.5%
Huntington Beach	199,033	31.2%
Irvine*	83,954	13.1%
Laguna Beach	23,061	3.6%
Laguna Hills	31,399	4.9%
Laguna Niguel	64,417	10.1%
Laguna Woods	17,658	2.8%
Newport Beach	85,338	13.4%
Unincorporated	2,025	0.3%
<b>District 2 Total</b>	<b>638,698</b>	<b>100.0%</b>

#### DISTRICT 3

Place	Total Population	Percent of District
Anaheim*	69,213	10.8%
Brea	47,397	7.4%
Fullerton*	119,847	18.7%
La Habra*	55,069	8.6%
North Tustin CDP	25,749	4.0%
Orange*	105,953	16.5%
Placentia	51,925	8.1%
Santa Ana*	287	0.0%
Tustin	80,152	12.5%
Unincorporated	11,003	1.7%
Villa Park	5,850	0.9%
Yorba Linda	68,415	10.7%
<b>District 3 Total</b>	<b>640,860</b>	<b>100.0%</b>

#### DISTRICT 4

Place	Total Population	Percent of District
Buena Park	84,187	13.3%
Costa Mesa*	32,548	5.1%
Cypress	50,235	7.9%
Fountain Valley	57,120	9.0%
Fullerton*	24,083	3.8%
Garden Grove*	172,200	27.2%
La Habra*	8,165	1.3%
La Palma	15,597	2.5%
Los Alamitos	11,795	1.9%
Midway City CDP	8,845	1.4%
Rossmoor CDP	10,634	1.7%
Seal Beach	25,283	4.0%
Stanton	38,067	6.0%
Unincorporated	3,061	0.5%
Westminster	91,083	14.4%
<b>District 4 Total</b>	<b>632,903</b>	<b>100.0%</b>

#### DISTRICT 5

Place	Total Population	Percent of District
Coto de Caza CDP	14,723	2.3%
Dana Point	33,144	5.1%
Irvine*	224,004	34.7%
Ladera Ranch CDP	26,188	4.1%
Lake Forest	85,965	13.3%
Las Flores CDP	6,004	0.9%
Mission Viejo	93,760	14.5%
Modjeska CDP	632	0.1%
Rancho Mission Viejo CDP	10,385	1.6%
Rancho Santa Margarita	48,000	7.4%
San Clemente	64,384	10.0%
San Juan Capistrano	35,271	5.5%
Silverado CDP	932	0.1%
Trabuco Canyon CDP	1,020	0.2%
Unincorporated	879	0.1%
Williams Canyon CDP	93	0.0%
<b>District 5 Total</b>	<b>645,384</b>	<b>100.0%</b>

\*City split by proposed district.

Percent shares calculated using unrounded numbers, but table displays only to tenths; therefore, percents displayed may not sum to 100%.

Proposal 2 with Technical Corrections includes the 11/2/2021 Board-directed technical corrections to U.S. Census Bureau's misassignment three (3) census blocks to the City of Tustin that are actually in the City of Santa Ana with a total of 260 population and the correction of city/CDP splits in unpopulated areas.

**PROPOSAL 2 with Technical Corrections**  
**County of Orange 2021 Redistricting**

**Table 5. Adjusted 2020 Census Population 18 Years and Over by Race/Ethnicity**

District	Total Population 18 and Over	Hispanic or Latino of any Race	Non- Hispanic White	Non- Hispanic Black or African- American	Non-Hispanic American Indian or Alaska Native	Non- Hispanic Asian	Non-Hispanic Native Hawaiian or Other Pacific Islander	Non- Hispanic Some Other Race	Non- Hispanic Two or More Races
<b>1</b>	484,997	310,234	75,072	9,408	908	78,289	1,602	1,586	7,898
	100.0%	64.0%	15.5%	1.9%	0.2%	16.1%	0.3%	0.3%	1.6%
<b>2</b>	528,793	93,517	321,440	7,613	920	78,241	957	2,855	23,250
	100.0%	17.7%	60.8%	1.4%	0.2%	14.8%	0.2%	0.5%	4.4%
<b>3</b>	504,318	166,840	214,058	8,884	1,033	93,955	866	2,325	16,357
	100.0%	33.1%	42.4%	1.8%	0.2%	18.6%	0.2%	0.5%	3.2%
<b>4</b>	505,416	136,436	142,868	8,442	841	199,637	2,064	1,906	13,222
	100.0%	27.0%	28.3%	1.7%	0.2%	39.5%	0.4%	0.4%	2.6%
<b>5</b>	502,155	80,490	269,965	7,120	800	119,741	715	2,458	20,866
	100.0%	16.0%	53.8%	1.4%	0.2%	23.8%	0.1%	0.5%	4.2%
<b>COUNTY TOTAL</b>	2,525,679	787,517	1,023,403	41,467	4,502	569,863	6,204	11,130	81,593
	100.0%	31.2%	40.5%	1.6%	0.2%	22.6%	0.2%	0.4%	3.2%

Percent shares calculated using unrounded numbers, but table displays only to tenths; therefore, percents displayed may not sum to 100%.

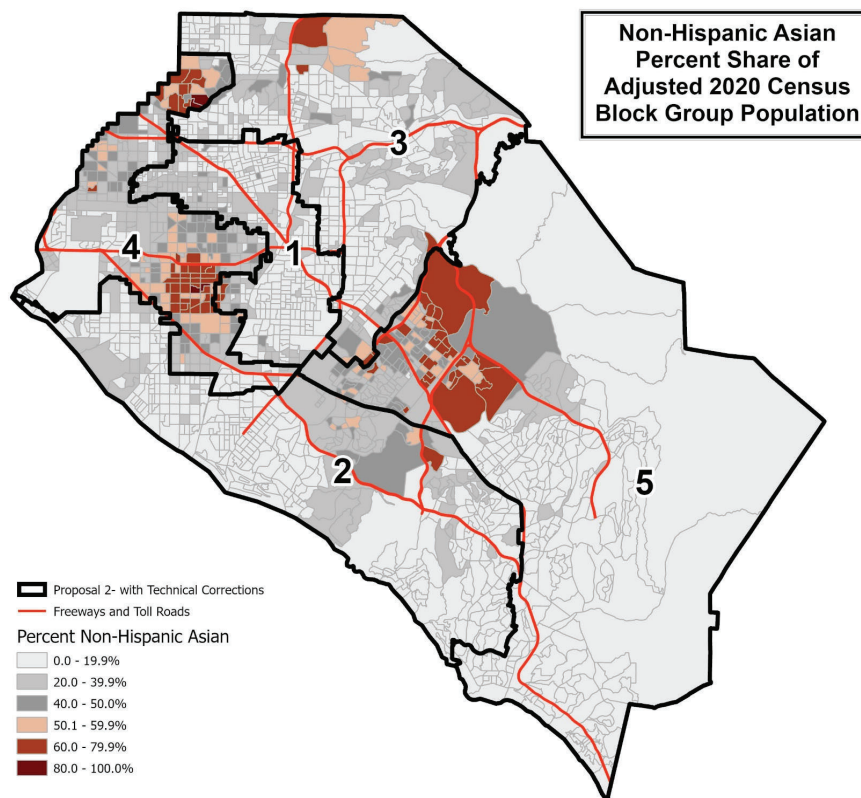
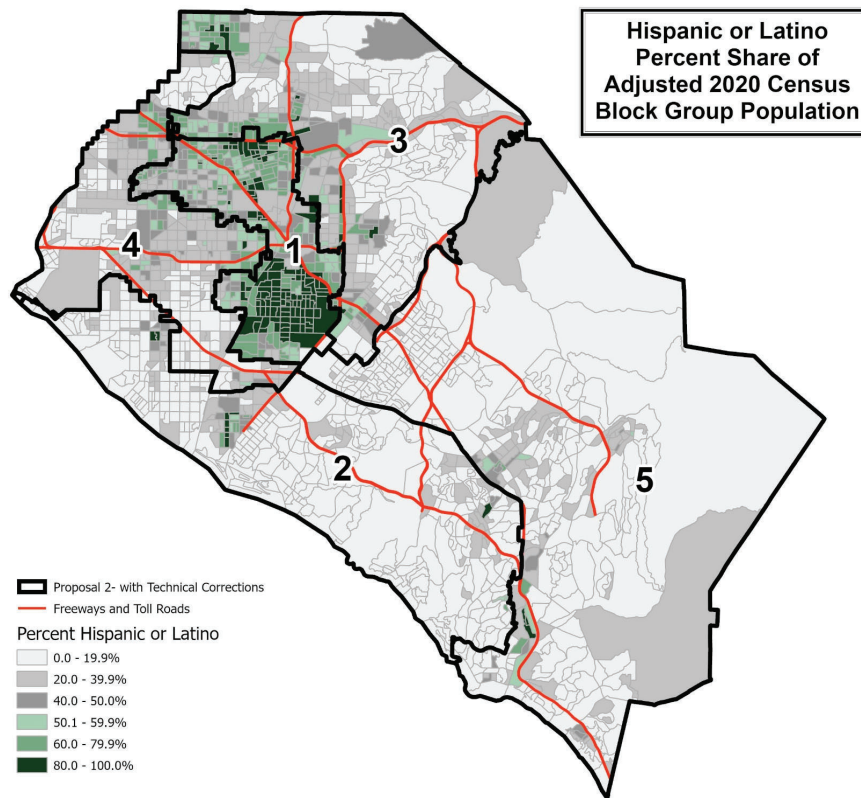
Source: Statewide Database; Adjusted, incarcerated persons reallocated P.L. 94-171 2020 Redistricting Data, Revised 9/27/2021

## **PROPOSAL 2 with Technical Corrections**

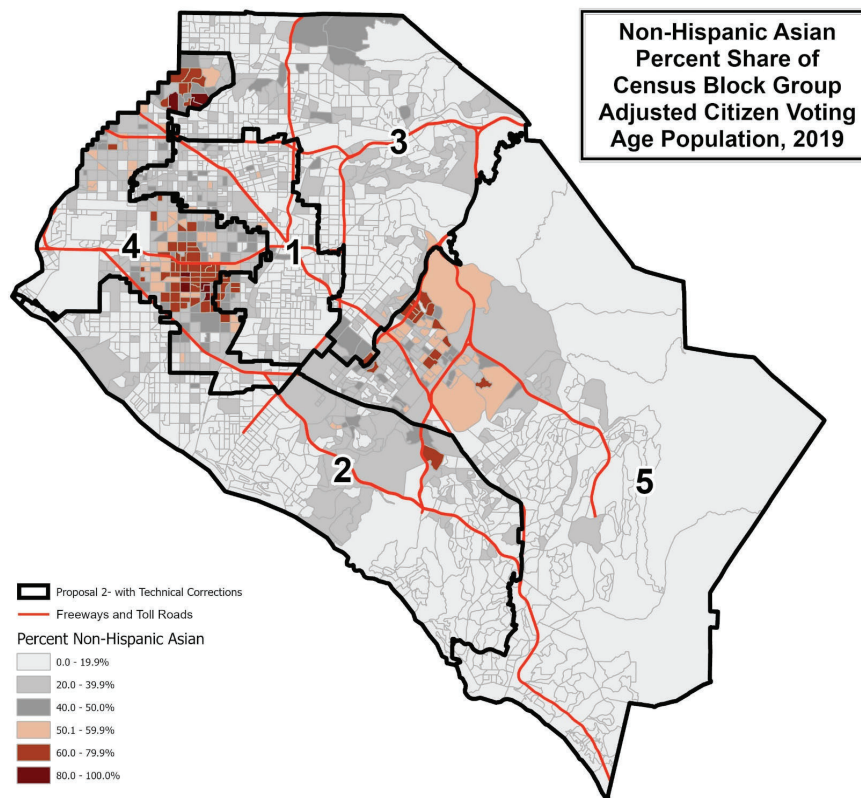
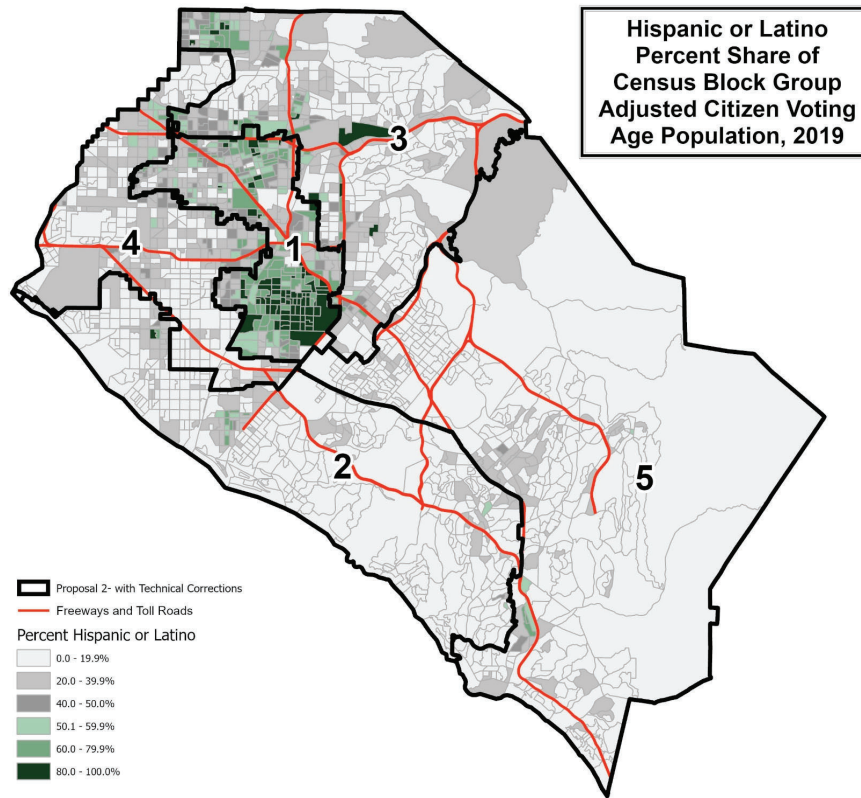
Contact Name: Rosio Viguera  
Organization: N/A  
Submitted Description: "A redistricting plan focused on equal representation and keeping communities of interest together.

Plan Objectives  
Keep communities of interest together and maximize equal representation."

Note: Proposal 2 with Technical Corrections includes the 11/2/2021 Board-directed technical corrections to U.S. Census Bureau's misassignment three (3) census blocks to the City of Tustin that are actually in the City of Santa Ana with a total of 260 population and the correction of city/CDP splits in unpopulated areas.



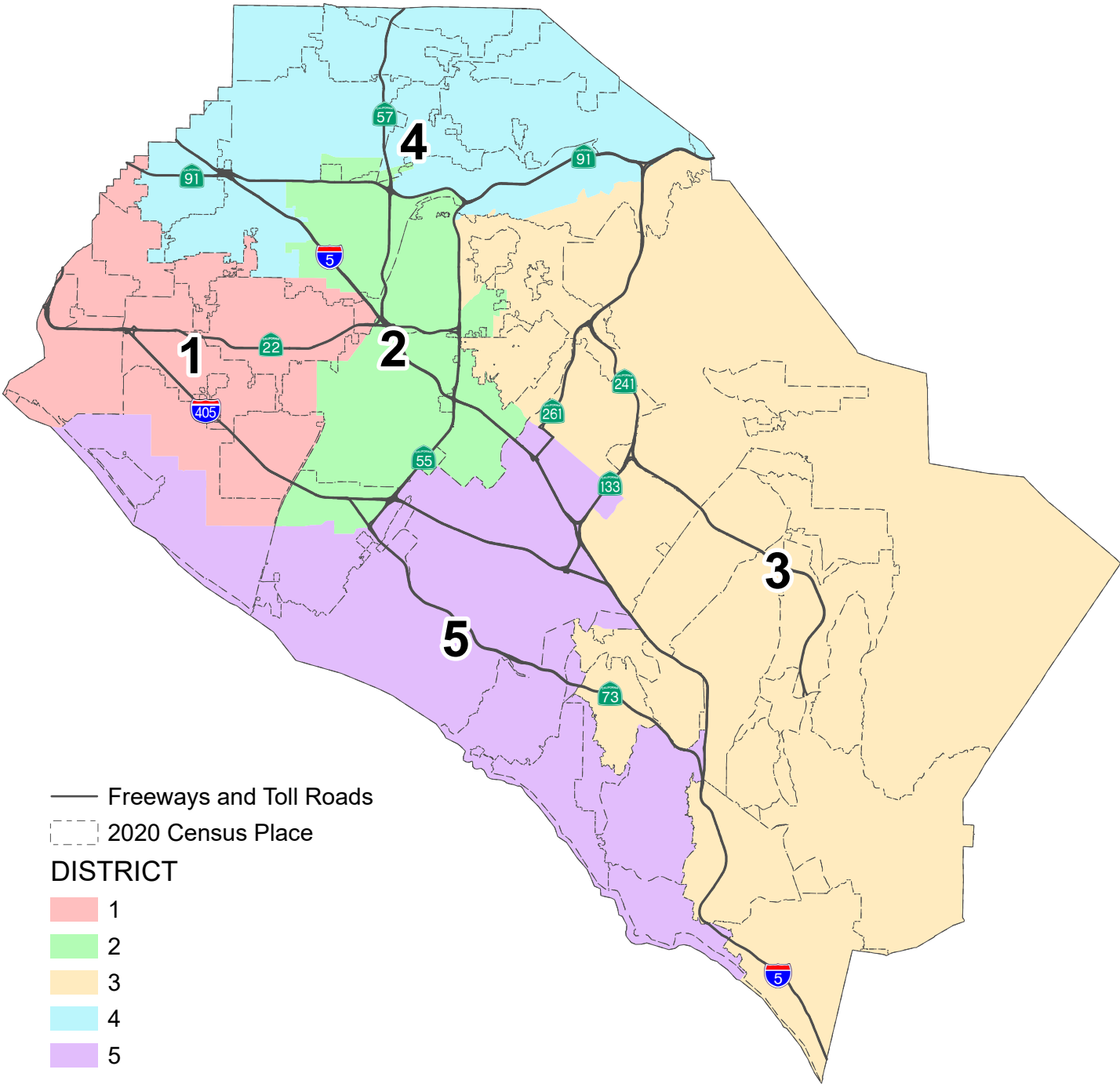




This page is intentionally left blank

County of Orange 2021 Redistricting

Proposal 4 Map (Technical Corrections)



This page is intentionally left blank

## PROPOSAL 4 with Technical Corrections County of Orange 2021 Redistricting

**Table 1. Adjusted 2020 Census Total Population by Race/Ethnicity**

District	Total Population	Hispanic or Latino of any Race	Non-Hispanic White	Non-Hispanic Black or African-American	Non-Hispanic American Indian or Alaska Native	Non-Hispanic Asian	Non-Hispanic Native Hawaiian or Other Pacific Islander	Non-Hispanic Some Other Race	Non-Hispanic Two or More Races
1	635,005	196,245	175,380	9,193	1,030	226,918	2,594	2,603	21,042
	100.0%	30.9%	27.6%	1.4%	0.2%	35.7%	0.4%	0.4%	3.3%
2	633,244	418,822	117,297	9,271	1,084	68,474	1,619	2,474	14,203
	100.0%	66.1%	18.5%	1.5%	0.2%	10.8%	0.3%	0.4%	2.2%
3	654,625	126,037	359,804	7,718	983	121,316	961	3,208	34,598
	100.0%	19.3%	55.0%	1.2%	0.2%	18.5%	0.1%	0.5%	5.3%
4	630,063	242,771	195,137	14,165	1,260	150,712	1,642	2,966	21,410
	100.0%	38.5%	31.0%	2.2%	0.2%	23.9%	0.3%	0.5%	3.4%
5	640,073	106,406	352,510	9,596	968	131,847	921	3,836	33,989
	100.0%	16.6%	55.1%	1.5%	0.2%	20.6%	0.1%	0.6%	5.3%
COUNTY TOTAL	3,193,010	1,090,281	1,200,128	49,943	5,325	699,267	7,737	15,087	125,242
	100.0%	34.1%	37.6%	1.6%	0.2%	21.9%	0.2%	0.5%	3.9%

**Table 2. Difference from 2021 Target Supervisorial District Population of 638,602**

District	Number	Percent	Percentage Spread (Largest - Smallest)
1	-3,597	-0.56%	3.85%
2	-5,358	-0.84%	
3	16,023	2.51%	
4	-8,539	-1.34%	
5	1,471	0.23%	

### Split Cities/Census Designated Places (CDPs) -

Anaheim (4)	Orange (4)
Costa Mesa (2)	Placentia (2)
Fountain Valley (2)	Santa Ana (2)
Fullerton (2)	Tustin (2)
Garden Grove (2)	
Huntington Beach (2)	
Irvine (2)	
Laguna Hills (2)	

Percent shares calculated using unrounded numbers, but table displays only to tenths; therefore, percents displayed may not sum to 100%.

Number in ( ) indicates number of Supervisorial Districts the city/CDP falls within.

Proposal 4 with Technical Corrections includes the 11/2/2021 Board-directed technical correction of city splits in unpopulated areas. The U.S. Census Bureau misassigned three (3) census blocks to the City of Tustin that are actually in the City of Santa Ana with a total of 260 population. Since the effected area is fully assigned to District 2, no splits are created and no correction is necessary.

**PROPOSAL 4 with Technical Corrections**  
**County of Orange 2021 Redistricting**

**Table 3. Adjusted Citizen Voting Age Population (CVAP) by Race/Ethnicity, 2015-2019 5-Year Estimates**

District	Total Estimated CVAP	Hispanic or Latino of any Race	Non-Hispanic White	Non-Hispanic Black or African-American	Non-Hispanic American Indian or Alaska Native	Non-Hispanic Asian	Non-Hispanic Native Hawaiian or Other Pacific Islander	Non-Hispanic Two or More Races
<b>1</b>	429,926	98,017	163,452	7,460	1,154	148,465	1,293	8,840
	100.0%	22.9%	38.1%	1.7%	0.3%	34.6%	0.3%	2.1%
<b>2</b>	345,019	175,986	109,667	7,310	619	44,633	1,427	4,474
	100.0%	51.1%	31.9%	2.1%	0.2%	13.0%	0.4%	1.3%
<b>3</b>	441,353	63,641	295,094	6,436	901	63,864	553	10,331
	100.0%	14.4%	66.9%	1.5%	0.2%	14.5%	0.1%	2.3%
<b>4</b>	406,401	118,277	178,546	11,918	738	86,844	1,493	7,716
	100.0%	29.2%	44.0%	2.9%	0.2%	21.4%	0.4%	1.9%
<b>5</b>	442,977	54,994	299,802	6,431	521	67,586	801	11,692
	100.0%	12.4%	67.9%	1.5%	0.1%	15.3%	0.2%	2.6%
<b>COUNTY TOTAL</b>	2,065,676	510,915	1,046,561	39,555	3,933	411,392	5,567	43,053
	100.0%	24.8%	50.8%	1.9%	0.2%	20.0%	0.3%	2.1%

Source: Statewide Database 2015-2019 Citizen Voting Age Population, adjusted to reflect reallocated incarcerated persons, on 2020 Census Blocks, Revised 9/27/2021 <https://statewidedatabase.org/redistricting2021/counties.html>

Notes: Percentages are calculated from sum of individual categories, not Total Estimated CVAP.

Because this is a special tabulation of data and not part of the standard data products shown on the Census Bureau's data.census.gov website, these estimates are rounded. Therefore, individual categories may not exactly add to the total.

For example, the sum of each of the race groups for non-Hispanics may not be the same as the estimate given for non-Hispanics. These estimates will not match counts from the 2020 Census.

The original data source for the Citizen Voting Age Population (CVAP) is the American Community Survey (ACS). The ACS is an ongoing survey by the U.S. Census Bureau sent to approximately 250,000 households each month.

The ACS estimates used to develop these data were collected from January 1, 2015 to December 31, 2019 utilizing the 2010 Census block groups, which were disaggregated to the 2020 Census blocks by the Statewide Database.

For more information about the CVAP products, visit <https://www.census.gov/programs-surveys/decennial-census/about/voting-rights/cvap.html> and

[https://www2.census.gov/programs-surveys/decennial/rdo/technical-documentation/special-tabulation/CVAP\\_2015-2019\\_ACS\\_documentation.pdf](https://www2.census.gov/programs-surveys/decennial/rdo/technical-documentation/special-tabulation/CVAP_2015-2019_ACS_documentation.pdf)

**PROPOSAL 4 with Technical Corrections**  
**County of Orange 2021 Redistricting**

**Table 4. Adjusted 2020 Census Population by District and 2020 Census Place**

**DISTRICT 1**

Place	Total Population	Percent of District
Anaheim*	14,358	2.3%
Cypress	50,235	7.9%
Fountain Valley*	56,898	9.0%
Garden Grove*	169,358	26.7%
Huntington Beach*	84,495	13.3%
La Palma	15,597	2.5%
Los Alamitos	11,795	1.9%
Midway City CDP	8,845	1.4%
Orange*	8,000	1.3%
Rossmoor CDP	10,634	1.7%
Santa Ana*	37,277	5.9%
Seal Beach	25,283	4.0%
Stanton	38,067	6.0%
Unincorporated	13,080	2.1%
Westminster	91,083	14.3%
<b>District 1 Total</b>	<b>635,005</b>	<b>100.0%</b>

**DISTRICT 2**

Place	Total Population	Percent of District
Anaheim*	148,154	23.4%
Costa Mesa*	37,161	5.9%
Fountain Valley*	222	0.0%
Fullerton*	2,101	0.3%
Garden Grove*	2,988	0.5%
Orange*	91,158	14.4%
Placentia*	4,811	0.8%
Santa Ana*	274,116	43.3%
Tustin*	68,280	10.8%
Unincorporated	4,253	0.7%
<b>District 2 Total</b>	<b>633,244</b>	<b>100.0%</b>

\*City split by proposed district.

Percent shares calculated using unrounded numbers, but table displays only to tenths; therefore, percents displayed may not sum to 100%.

Proposal 4 with Technical Corrections includes the 11/2/2021 Board-directed technical corrections of city/CDP splits in unpopulated areas.

**DISTRICT 3**

Place	Total Population	Percent of District
Aliso Viejo	52,222	8.0%
Anaheim*	11,710	1.8%
Coto de Caza CDP	14,723	2.2%
Irvine*	68,622	10.5%
Ladera Ranch CDP	26,188	4.0%
Laguna Hills*	28,163	4.3%
Laguna Woods	17,658	2.7%
Lake Forest	85,965	13.1%
Las Flores CDP	6,004	0.9%
Mission Viejo	93,760	14.3%
Modjeska CDP	632	0.1%
North Tustin CDP	25,749	3.9%
Orange*	40,903	6.2%
Rancho Mission Viejo CDP	10,385	1.6%
Rancho Santa Margarita	48,000	7.3%
San Clemente	64,384	9.8%
San Juan Capistrano	35,271	5.4%
Silverado CDP	932	0.1%
Trabuco Canyon CDP	1,020	0.2%
Tustin*	12,132	1.9%
Unincorporated	4,259	0.7%
Villa Park	5,850	0.9%
Williams Canyon CDP	93	0.0%
<b>District 3 Total</b>	<b>654,625</b>	<b>100.0%</b>

**DISTRICT 4**

Place	Total Population	Percent of District
Anaheim*	173,531	27.5%
Brea	47,397	7.5%
Buena Park	84,187	13.4%
Fullerton*	141,829	22.5%
La Habra	63,234	10.0%
Orange*	130	0.0%
Placentia*	47,114	7.5%
Unincorporated	4,226	0.7%
Yorba Linda	68,415	10.9%
<b>District 4 Total</b>	<b>630,063</b>	<b>100.0%</b>

**DISTRICT 5**

Place	Total Population	Percent of District
Costa Mesa*	74,978	11.7%
Dana Point	33,144	5.2%
Huntington Beach*	114,538	17.9%
Irvine*	239,336	37.4%
Laguna Beach	23,061	3.6%
Laguna Hills*	3,236	0.5%
Laguna Niguel	64,417	10.1%
Newport Beach	85,338	13.3%
Unincorporated	2,025	0.3%
<b>District 5 Total</b>	<b>640,073</b>	<b>100.0%</b>

**PROPOSAL 4 with Technical Corrections**  
**County of Orange 2021 Redistricting**

**Table 5. Adjusted 2020 Census Population 18 Years and Over by Race/Ethnicity**

District	Total Population 18 and Over	Hispanic or Latino of any Race	Non- Hispanic White	Non- Hispanic Black or African- American	Non-Hispanic American Indian or Alaska Native	Non- Hispanic Asian	Non-Hispanic Native Hawaiian or Other Pacific Islander	Non- Hispanic Some Other Race	Non- Hispanic Two or More Races
<b>1</b>	508,070	142,393	152,402	7,553	864	186,981	2,079	1,972	13,826
	100.0%	28.0%	30.0%	1.5%	0.2%	36.8%	0.4%	0.4%	2.7%
<b>2</b>	483,331	300,144	103,400	7,790	917	58,106	1,275	1,727	9,972
	100.0%	62.1%	21.4%	1.6%	0.2%	12.0%	0.3%	0.4%	2.1%
<b>3</b>	512,963	89,719	296,966	6,420	827	95,063	772	2,330	20,866
	100.0%	17.5%	57.9%	1.3%	0.2%	18.5%	0.2%	0.5%	4.1%
<b>4</b>	495,273	174,472	167,945	11,617	1,073	122,730	1,337	2,159	13,940
	100.0%	35.2%	33.9%	2.3%	0.2%	24.8%	0.3%	0.4%	2.8%
<b>5</b>	526,042	80,789	302,690	8,087	821	106,983	741	2,942	22,989
	100.0%	15.4%	57.5%	1.5%	0.2%	20.3%	0.1%	0.6%	4.4%
<b>COUNTY TOTAL</b>	2,525,679	787,517	1,023,403	41,467	4,502	569,863	6,204	11,130	81,593
	100.0%	31.2%	40.5%	1.6%	0.2%	22.6%	0.2%	0.4%	3.2%

Percent shares calculated using unrounded numbers, but table displays only to tenths; therefore, percents displayed may not sum to 100%.

Source: Statewide Database; Adjusted, incarcerated persons reallocated P.L. 94-171 2020 Redistricting Data, Revised 9/27/2021

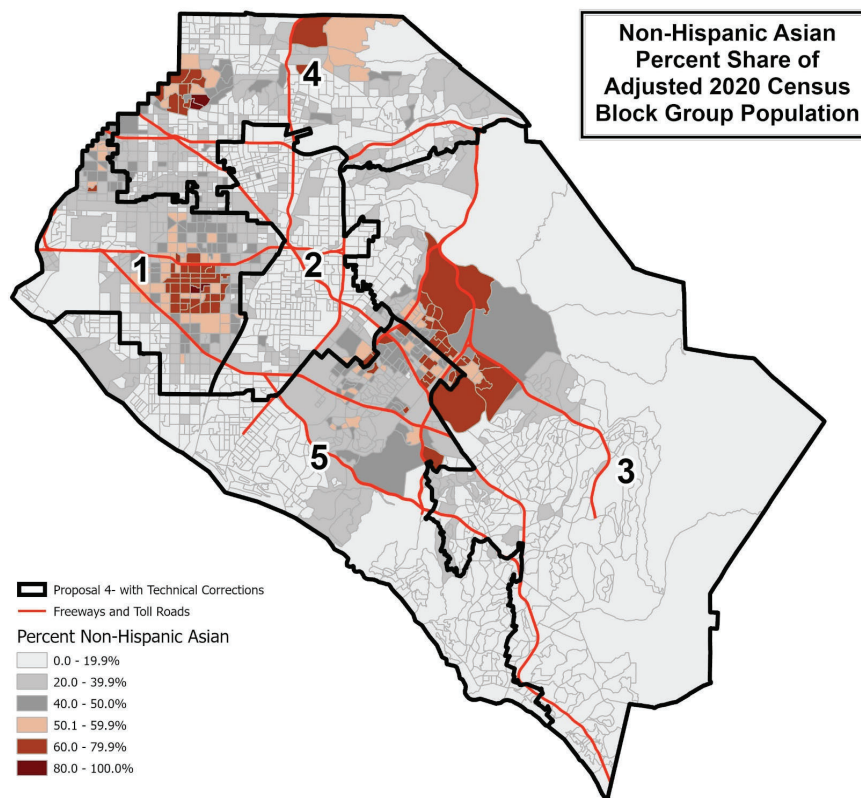
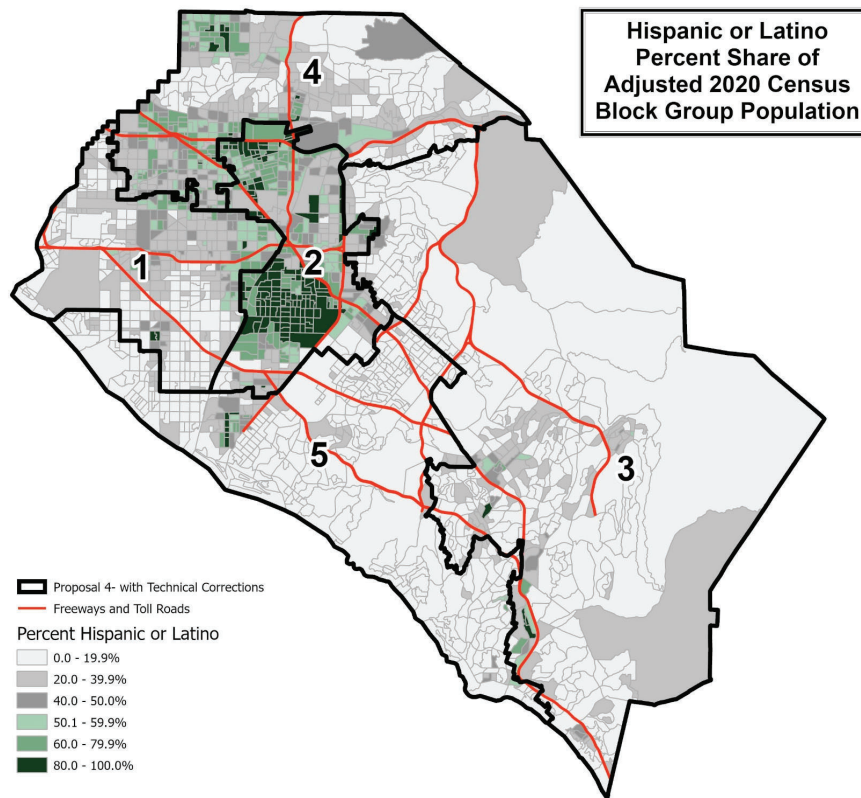


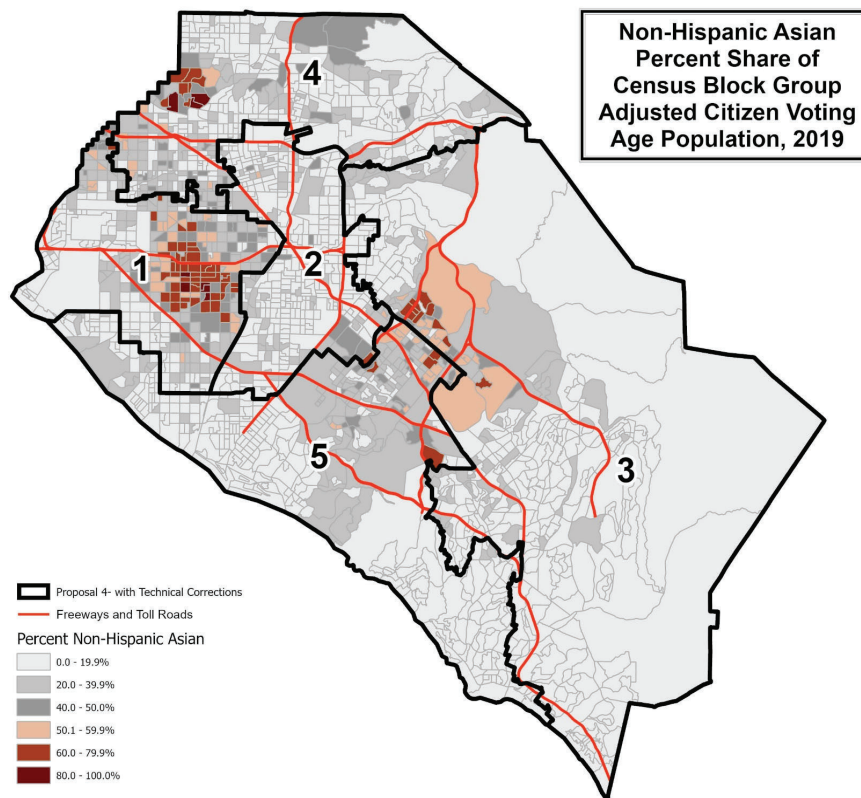
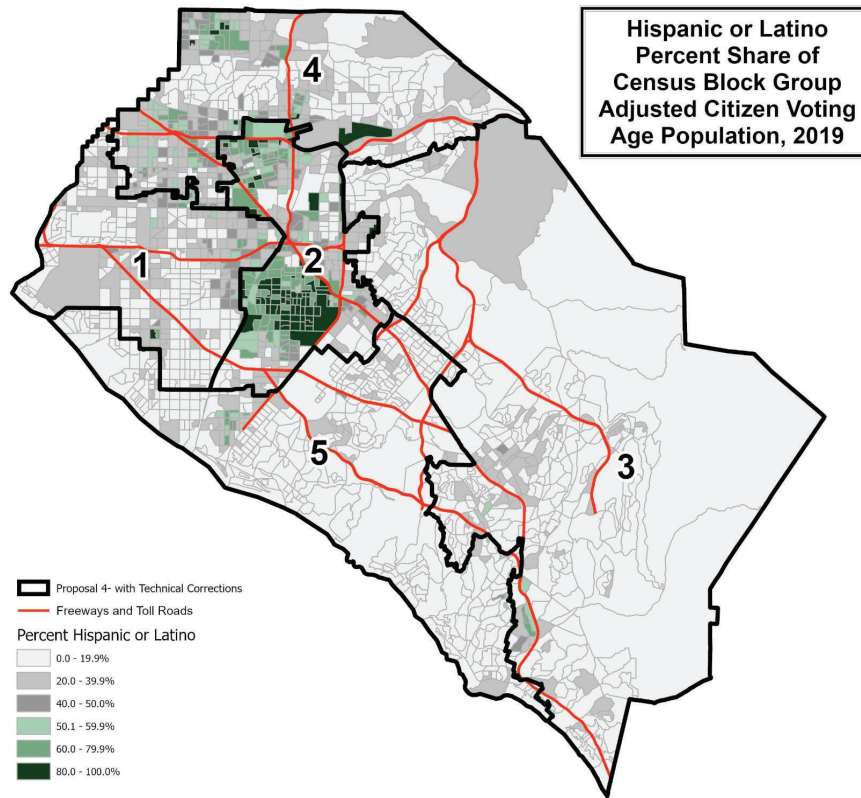
## **PROPOSAL 4 with Technical Corrections**

Contact Name: Sam Hoang  
Organization: Asian/Pacific Islanders Communities of Interest Orange County  
Submitted Description: "Plan focused on keeping communities of interest together"

Plan Objectives  
Keep Communities of Interest together"

Note: Proposal 4 with Technical Corrections includes the 11/2/2021 Board-directed technical corrections of city/CDP splits in unpopulated areas.

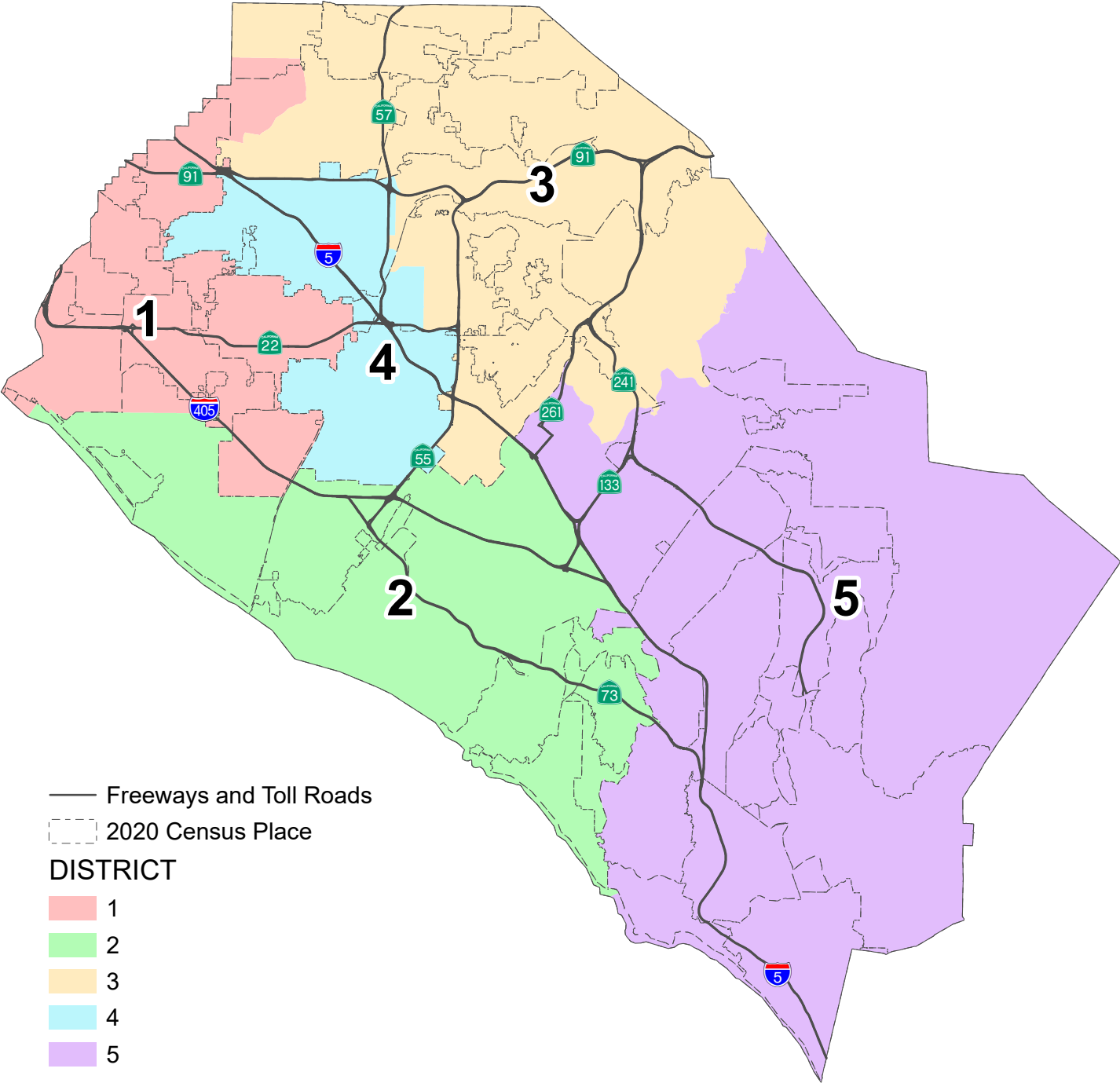




This page is intentionally left blank

County of Orange 2021 Redistricting

Proposal 2A Map



This page is intentionally left blank

## PROPOSAL 2A

### County of Orange 2021 Redistricting

**Table 1. Adjusted 2020 Census Total Population by Race/Ethnicity**

District	Total Population	Hispanic or Latino of any Race	Non-Hispanic White	Non-Hispanic Black or African-American	Non-Hispanic American Indian or Alaska Native	Non-Hispanic Asian	Non-Hispanic Native Hawaiian or Other Pacific Islander	Non-Hispanic Some Other Race	Non-Hispanic Two or More Races
1	617,041	184,201	155,607	10,250	951	241,623	2,484	2,425	19,500
	100.0%	29.9%	25.2%	1.7%	0.2%	39.2%	0.4%	0.4%	3.2%
2	658,307	124,207	361,480	9,722	1,019	121,112	1,383	4,002	35,382
	100.0%	18.9%	54.9%	1.5%	0.2%	18.4%	0.2%	0.6%	5.4%
3	641,672	231,288	250,556	10,702	1,190	118,085	1,079	3,171	25,601
	100.0%	36.0%	39.0%	1.7%	0.2%	18.4%	0.2%	0.5%	4.0%
4	634,848	431,304	84,021	11,231	1,124	91,846	1,959	2,317	11,046
	100.0%	67.9%	13.2%	1.8%	0.2%	14.5%	0.3%	0.4%	1.7%
5	641,142	119,281	348,464	8,038	1,041	126,601	832	3,172	33,713
	100.0%	18.6%	54.4%	1.3%	0.2%	19.7%	0.1%	0.5%	5.3%
COUNTY TOTAL	3,193,010	1,090,281	1,200,128	49,943	5,325	699,267	7,737	15,087	125,242
	100.0%	34.1%	37.6%	1.6%	0.2%	21.9%	0.2%	0.5%	3.9%

**Table 2. Difference from 2021 Target Supervisorial District Population of 638,602**

District	Number	Percent	Percentage Spread (Largest - Smallest)
1	-21,561	-3.38%	6.46%
2	19,705	3.09%	
3	3,070	0.48%	
4	-3,754	-0.59%	
5	2,540	0.40%	

#### Split Cities/Census Designated Places (CDPs) -

Anaheim (3) Seal Beach (2)  
 Fullerton (2)  
 Huntington Beach (2)  
 Irvine (4)  
 La Habra (2)  
 Laguna Hills (2)  
 Orange (2)  
 Santa Ana (2)

Percent shares calculated using unrounded numbers, but table displays only to tenths; therefore, percents displayed may not sum to 100%.

Number in ( ) indicates number of Supervisorial Districts the city/CDP falls within.

The U.S. Census Bureau misassigned three (3) census blocks to the City of Tustin that are actually in the City of Santa Ana with a total of 260 population.

Submitted plan does not include assignment of three blocks that are in Santa Ana but Census Bureau misassigned to City of Tustin.

## PROPOSAL 2A

### County of Orange 2021 Redistricting

**Table 3. Adjusted Citizen Voting Age Population (CVAP) by Race/Ethnicity, 2015-2019 5-Year Estimates**

District	Total Estimated CVAP	Hispanic or Latino of any Race	Non- Hispanic White	Non-Hispanic Black or African- American	Non-Hispanic American Indian or Alaska Native	Non- Hispanic Asian	Non-Hispanic Native Hawaiian or Other Pacific Islander	Non- Hispanic Two or More Races
<b>1</b>	411,155	89,611	148,602	8,041	853	153,701	1,381	8,332
	100.0%	21.8%	36.2%	2.0%	0.2%	37.4%	0.3%	2.0%
<b>2</b>	462,714	65,590	306,425	7,916	1,145	67,412	1,274	11,973
	100.0%	14.2%	66.4%	1.7%	0.2%	14.6%	0.3%	2.6%
<b>3</b>	425,243	114,667	224,921	8,565	594	67,195	685	7,903
	100.0%	27.0%	53.0%	2.0%	0.1%	15.8%	0.2%	1.9%
<b>4</b>	342,762	182,682	82,246	8,678	549	61,480	1,684	3,770
	100.0%	53.6%	24.1%	2.5%	0.2%	18.0%	0.5%	1.1%
<b>5</b>	423,802	58,365	284,367	6,355	792	61,604	543	11,075
	100.0%	13.8%	67.2%	1.5%	0.2%	14.6%	0.1%	2.6%
<b>COUNTY TOTAL</b>	2,065,676	510,915	1,046,561	39,555	3,933	411,392	5,567	43,053
	100.0%	24.8%	50.8%	1.9%	0.2%	20.0%	0.3%	2.1%

Source: Statewide Database 2015-2019 Citizen Voting Age Population, adjusted to reflect reallocated incarcerated persons, on 2020 Census Blocks, Revised 9/27/2021 <https://statewidedatabase.org/redistricting2021/counties.html>

Notes: Percentages are calculated from sum of individual categories, not Total Estimated CVAP.

Because this is a special tabulation of data and not part of the standard data products shown on the Census Bureau's data.census.gov website, these estimates are rounded. Therefore, individual categories may not exactly add to the total.

For example, the sum of each of the race groups for non-Hispanics may not be the same as the estimate given for non-Hispanics. These estimates will not match counts from the 2020 Census.

The original data source for the Citizen Voting Age Population (CVAP) is the American Community Survey (ACS). The ACS is an ongoing survey by the U.S. Census Bureau sent to approximately 250,000 households each month.

The ACS estimates used to develop these data were collected from January 1, 2015 to December 31, 2019 utilizing the 2010 Census block groups, which were disaggregated to the 2020 Census blocks by the Statewide Database.

For more information about the CVAP products, visit <https://www.census.gov/programs-surveys/decennial-census/about/voting-rights/cvap.html> and

[https://www2.census.gov/programs-surveys/decennial/rdo/technical-documentation/special-tabulation/CVAP\\_2015-2019\\_ACS\\_documentation.pdf](https://www2.census.gov/programs-surveys/decennial/rdo/technical-documentation/special-tabulation/CVAP_2015-2019_ACS_documentation.pdf)



## PROPOSAL 2A

### County of Orange 2021 Redistricting

**Table 4. Adjusted 2020 Census Population by District and 2020 Census Place**

#### DISTRICT 1

Place	Total Population	Percent of District
Anaheim*	24	0.0%
Buena Park	84,187	13.6%
Cypress	50,235	8.1%
Fountain Valley	57,120	9.3%
Fullerton*	24,083	3.9%
Garden Grove	172,346	27.9%
Huntington Beach*	15,515	2.5%
La Habra*	8,165	1.3%
La Palma	15,597	2.5%
Los Alamitos	11,795	1.9%
Midway City CDP	8,845	1.4%
Rossmoor CDP	10,634	1.7%
Seal Beach*	24,814	4.0%
Stanton	38,067	6.2%
Unincorporated	4,531	0.7%
Westminster	91,083	14.8%
<b>District 1 Total</b>	<b>617,041</b>	<b>100.0%</b>

#### DISTRICT 2

Place	Total Population	Percent of District
Aliso Viejo*	52,222	7.9%
Costa Mesa	112,139	17.0%
Huntington Beach*	183,518	27.9%
Irvine*	181,877	27.6%
Laguna Beach	23,061	3.5%
Laguna Hills*	0	0.0%
Laguna Woods	17,658	2.7%
Newport Beach	85,338	13.0%
Seal Beach*	469	0.1%
Unincorporated	2,025	0.3%
<b>District 2 Total</b>	<b>658,307</b>	<b>100.0%</b>

\*City split by proposed district.

Percent shares calculated using unrounded numbers, but table displays only to tenths; therefore, percents displayed may not sum to 100%.

#### DISTRICT 3

Place	Total Population	Percent of District
Anaheim*	69,017	10.8%
Brea	47,397	7.4%
Fullerton*	119,847	18.7%
Irvine*	2,126	0.3%
La Habra*	55,069	8.6%
North Tustin CDP	25,749	4.0%
Orange*	104,853	16.3%
Placentia	51,925	8.1%
Santa Ana*	0	0.0%
Tustin	80,412	12.5%
Unincorporated	11,012	1.7%
Villa Park	5,850	0.9%
Yorba Linda	68,415	10.7%
<b>District 3 Total</b>	<b>641,672</b>	<b>100.0%</b>

#### DISTRICT 4

Place	Total Population	Percent of District
Anaheim*	278,712	43.9%
Irvine*	0	0.0%
Orange*	35,338	5.6%
Santa Ana*	311,393	49.1%
Unincorporated	9,405	1.5%
<b>District 4 Total</b>	<b>634,848</b>	<b>100.0%</b>

#### DISTRICT 5

Place	Total Population	Percent of District
Aliso Viejo*	0	0.0%
Coto de Caza CDP	14,723	2.3%
Dana Point	33,144	5.2%
Irvine*	123,955	19.3%
Ladera Ranch CDP	26,188	4.1%
Laguna Hills*	31,399	4.9%
Laguna Niguel	64,417	10.0%
Lake Forest	85,965	13.4%
Las Flores CDP	6,004	0.9%
Mission Viejo	93,760	14.6%
Modjeska CDP	632	0.1%
Rancho Mission Viejo CDP	10,385	1.6%
Rancho Santa Margarita	48,000	7.5%
San Clemente	64,384	10.0%
San Juan Capistrano	35,271	5.5%
Silverado CDP	932	0.1%
Trabuco Canyon CDP	1,020	0.2%
Unincorporated	870	0.1%
Williams Canyon CDP	93	0.0%
<b>District 5 Total</b>	<b>641,142</b>	<b>100.0%</b>

**PROPOSAL 2A**  
**County of Orange 2021 Redistricting**

**Table 5. Adjusted 2020 Census Population 18 Years and Over by Race/Ethnicity**

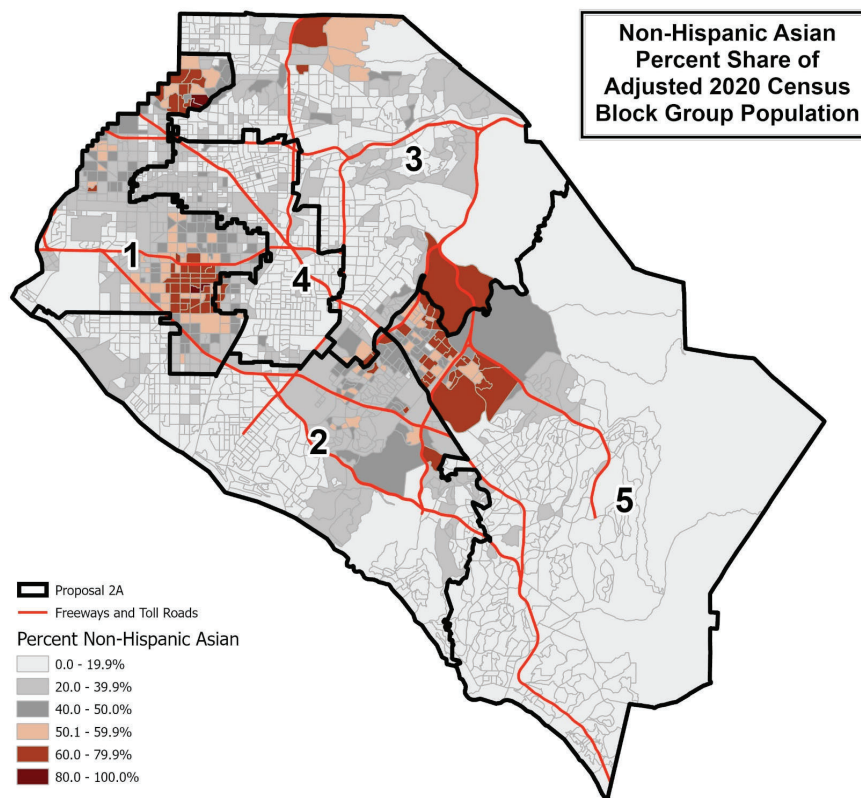
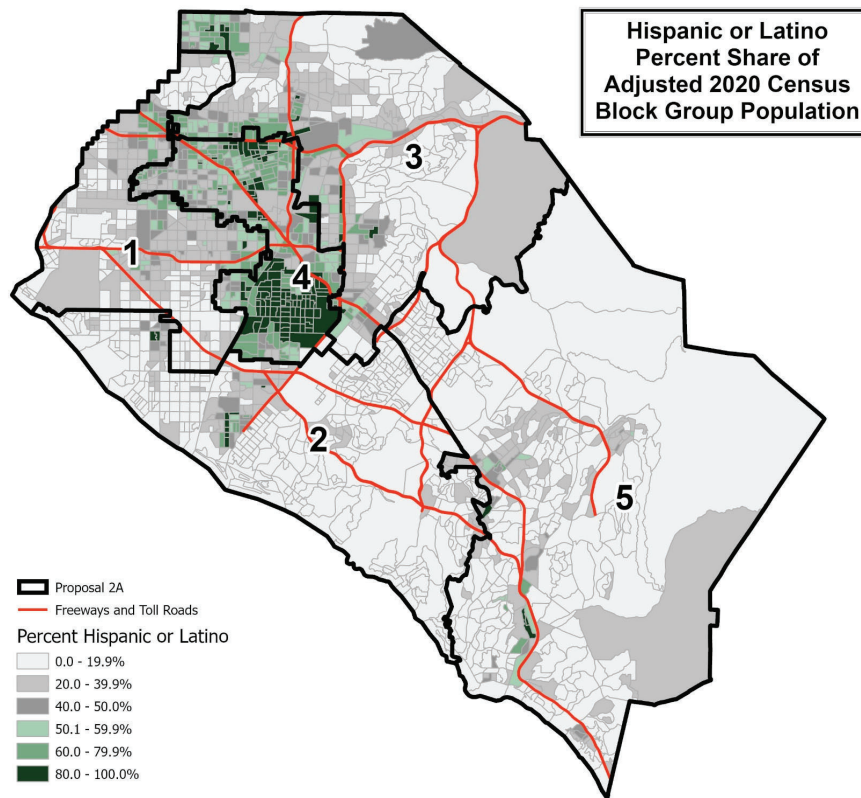
District	Total Population 18 and Over	Hispanic or Latino of any Race	Non- Hispanic White	Non- Hispanic Black or African- American	Non-Hispanic American Indian or Alaska Native	Non- Hispanic Asian	Non-Hispanic Native Hawaiian or Other Pacific Islander	Non- Hispanic Some Other Race	Non- Hispanic Two or More Races
<b>1</b>	491,999	132,621	135,642	8,280	819	198,128	1,983	1,814	12,712
	100.0%	27.0%	27.6%	1.7%	0.2%	40.3%	0.4%	0.4%	2.6%
<b>2</b>	543,766	93,742	311,244	8,389	877	101,192	1,098	3,099	24,125
	100.0%	17.2%	57.2%	1.5%	0.2%	18.6%	0.2%	0.6%	4.4%
<b>3</b>	504,794	166,262	214,036	8,875	1,025	95,029	864	2,334	16,369
	100.0%	32.9%	42.4%	1.8%	0.2%	18.8%	0.2%	0.5%	3.2%
<b>4</b>	484,770	310,076	75,217	9,389	914	78,100	1,578	1,581	7,915
	100.0%	64.0%	15.5%	1.9%	0.2%	16.1%	0.3%	0.3%	1.6%
<b>5</b>	500,350	84,816	287,264	6,534	867	97,414	681	2,302	20,472
	100.0%	17.0%	57.4%	1.3%	0.2%	19.5%	0.1%	0.5%	4.1%
<b>COUNTY TOTAL</b>	2,525,679	787,517	1,023,403	41,467	4,502	569,863	6,204	11,130	81,593
	100.0%	31.2%	40.5%	1.6%	0.2%	22.6%	0.2%	0.4%	3.2%

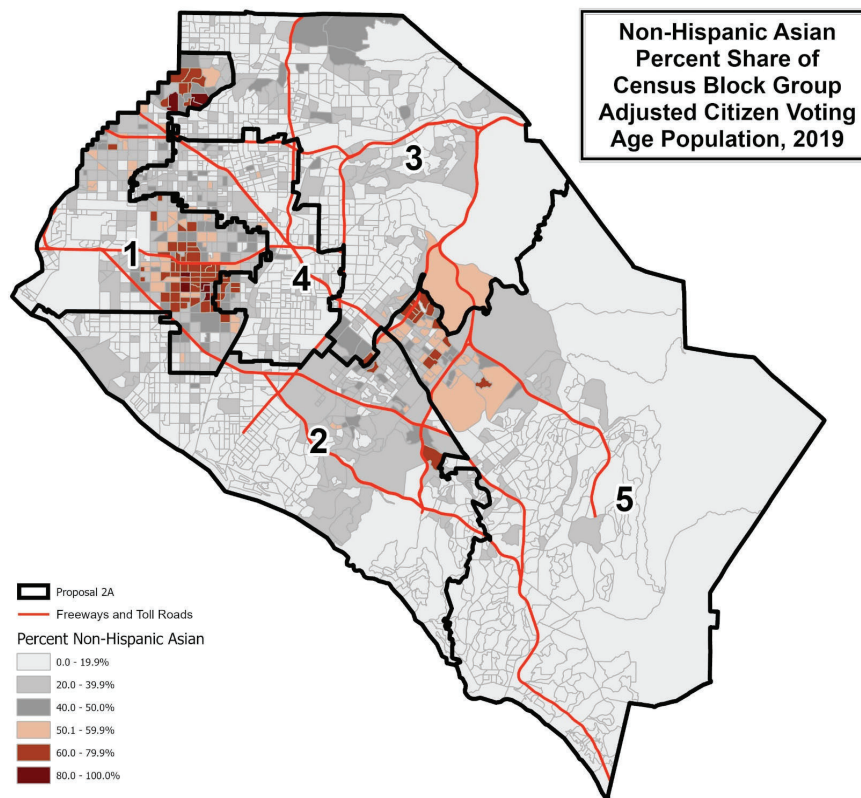
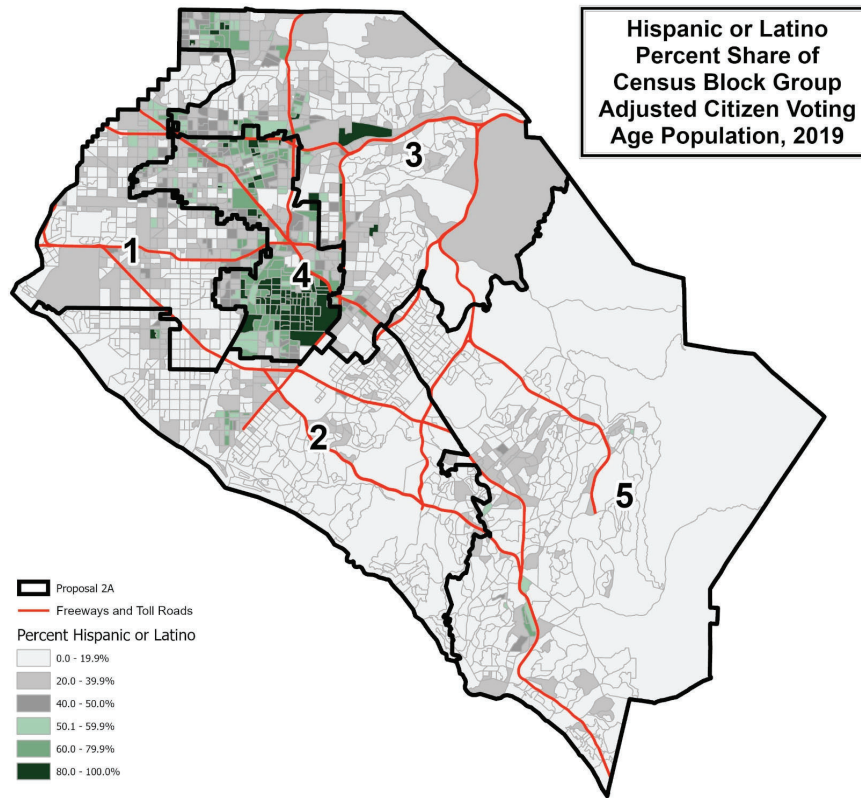
Percent shares calculated using unrounded numbers, but table displays only to tenths; therefore, percents displayed may not sum to 100%.

Source: Statewide Database; Adjusted, incarcerated persons reallocated P.L. 94-171 2020 Redistricting Data, Revised 9/27/2021

## **PROPOSAL 2A**

Contact Name: Nick Anas  
Organization: Supervisor Katrina Foley  
Submitted Description: "Revisions to Proposal 2 - District 2"

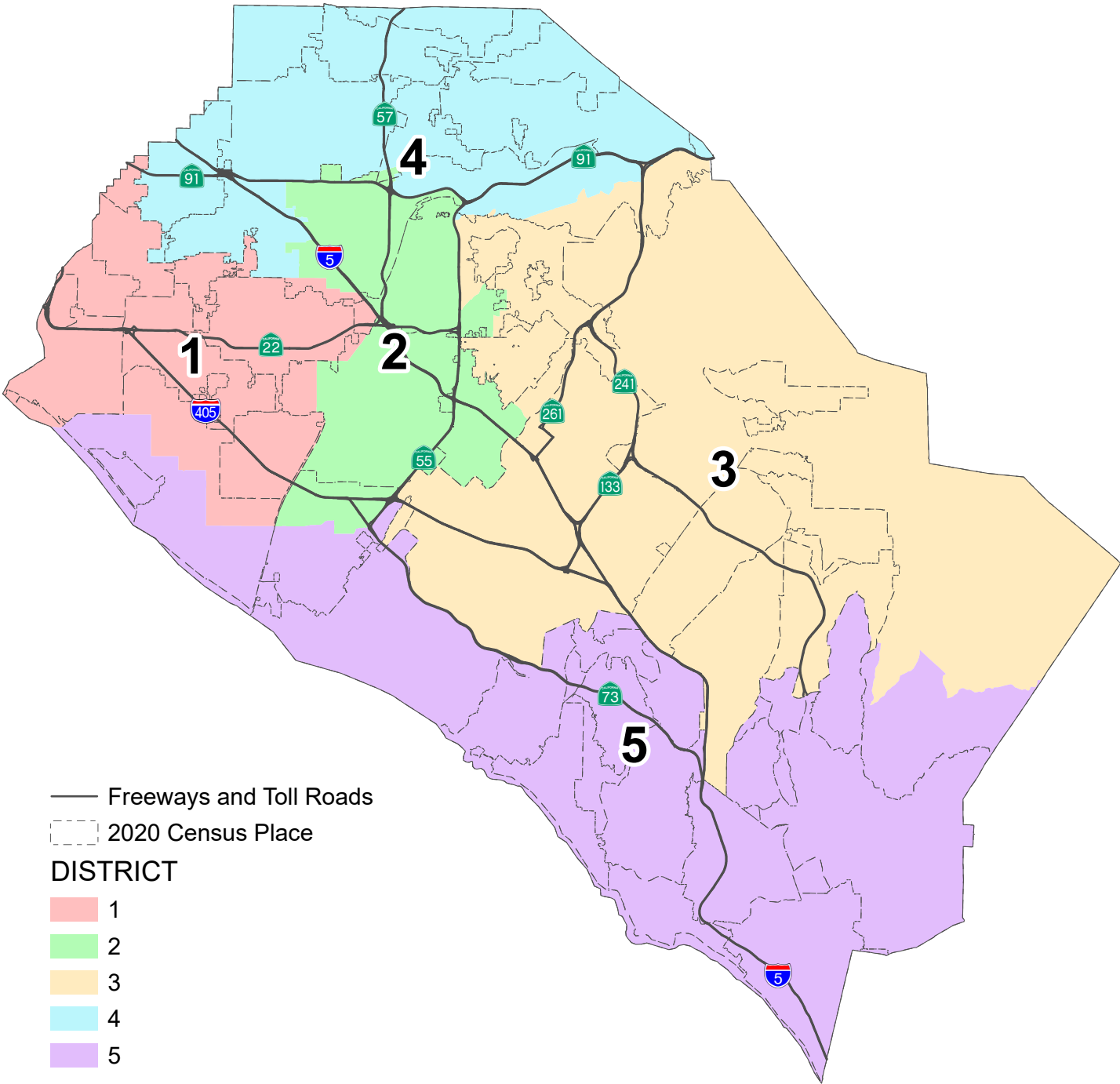




This page is intentionally left blank

County of Orange 2021 Redistricting

Proposal 4A Map



This page is intentionally left blank



**PROPOSAL 4A**  
**County of Orange 2021 Redistricting**

**Table 1. Adjusted 2020 Census Total Population by Race/Ethnicity**

District	Total Population	Hispanic or Latino of any Race	Non-Hispanic White	Non-Hispanic Black or African-American	Non-Hispanic American Indian or Alaska Native	Non-Hispanic Asian	Non-Hispanic Native Hawaiian or Other Pacific Islander	Non-Hispanic Some Other Race	Non-Hispanic Two or More Races
1	635,227	196,320	175,417	9,196	1,030	227,014	2,594	2,603	21,053
	100.0%	30.9%	27.6%	1.4%	0.2%	35.7%	0.4%	0.4%	3.3%
2	630,921	417,310	116,833	9,193	1,084	68,270	1,613	2,469	14,149
	100.0%	66.1%	18.5%	1.5%	0.2%	10.8%	0.3%	0.4%	2.2%
3	638,865	106,336	289,490	10,896	769	192,028	887	3,437	35,022
	100.0%	16.6%	45.3%	1.7%	0.1%	30.1%	0.1%	0.5%	5.5%
4	632,164	244,208	195,564	14,240	1,260	150,820	1,648	2,971	21,453
	100.0%	38.6%	30.9%	2.3%	0.2%	23.9%	0.3%	0.5%	3.4%
5	655,833	126,107	422,824	6,418	1,182	61,135	995	3,607	33,565
	100.0%	19.2%	64.5%	1.0%	0.2%	9.3%	0.2%	0.5%	5.1%
COUNTY TOTAL	3,193,010	1,090,281	1,200,128	49,943	5,325	699,267	7,737	15,087	125,242
	100.0%	34.1%	37.6%	1.6%	0.2%	21.9%	0.2%	0.5%	3.9%

**Table 2. Difference from 2021 Target Supervisorial District Population of 638,602**

District	Number	Percent	Percentage Spread (Largest - Smallest)
1	-3,375	-0.53%	3.90%
2	-7,681	-1.20%	
3	263	0.04%	
4	-6,438	-1.01%	
5	17,231	2.70%	

### Split Cities/Census Designated Places (CDPs) -

Anaheim (4) Santa Ana (3)

Costa Mesa (2)                      Tustin (2)

Fullerton (2)

### Garden Grove (2)

Huntington Beach (2)

## Mission Viejo (2)

Orange (4)

Placentia (2)

Percent shares calculated using unrounded numbers, but table displays only to tenths; therefore, percents displayed may not sum to 100%.

Number in ( ) indicates number of Supervisorial Districts the city/CDP falls within.

The U.S. Census Bureau misassigned three (3) census blocks to the City of Tustin that are actually in the City of Santa Ana with a total of 260 population. Since the affected area is fully assigned to District 2, no splits are created and no correction is necessary.

**PROPOSAL 4A**  
**County of Orange 2021 Redistricting**

**Table 3. Adjusted Citizen Voting Age Population (CVAP) by Race/Ethnicity, 2015-2019 5-Year Estimates**

District	Total Estimated CVAP	Hispanic or Latino of any Race	Non- Hispanic White	Non-Hispanic Black or African- American	Non-Hispanic American Indian or Alaska Native	Non- Hispanic Asian	Non-Hispanic Native Hawaiian or Other Pacific Islander	Non- Hispanic Two or More Races
<b>1</b>	430,045	98,045	163,488	7,460	1,154	148,529	1,293	8,841
	100.0%	22.9%	38.1%	1.7%	0.3%	34.6%	0.3%	2.1%
<b>2</b>	343,786	175,142	109,350	7,269	619	44,546	1,427	4,457
	100.0%	51.1%	31.9%	2.1%	0.2%	13.0%	0.4%	1.3%
<b>3</b>	405,725	55,485	240,037	6,883	705	90,081	518	10,898
	100.0%	13.7%	59.3%	1.7%	0.2%	22.3%	0.1%	2.7%
<b>4</b>	407,515	119,093	178,827	11,959	738	86,867	1,493	7,732
	100.0%	29.3%	44.0%	2.9%	0.2%	21.4%	0.4%	1.9%
<b>5</b>	478,605	63,150	354,859	5,984	717	41,369	836	11,125
	100.0%	13.2%	74.2%	1.3%	0.1%	8.7%	0.2%	2.3%
<b>COUNTY TOTAL</b>	2,065,676	510,915	1,046,561	39,555	3,933	411,392	5,567	43,053
	100.0%	24.8%	50.8%	1.9%	0.2%	20.0%	0.3%	2.1%

Source: Statewide Database 2015-2019 Citizen Voting Age Population, adjusted to reflect reallocated incarcerated persons, on 2020 Census Blocks, Revised 9/27/2021 <https://statewidedatabase.org/redistricting2021/counties.html>

Notes: Percentages are calculated from sum of individual categories, not Total Estimated CVAP.

Because this is a special tabulation of data and not part of the standard data products shown on the Census Bureau's data.census.gov website, these estimates are rounded. Therefore, individual categories may not exactly add to the total.

For example, the sum of each of the race groups for non-Hispanics may not be the same as the estimate given for non-Hispanics. These estimates will not match counts from the 2020 Census.

The original data source for the Citizen Voting Age Population (CVAP) is the American Community Survey (ACS). The ACS is an ongoing survey by the U.S. Census Bureau sent to approximately 250,000 households each month.

The ACS estimates used to develop these data were collected from January 1, 2015 to December 31, 2019 utilizing the 2010 Census block groups, which were disaggregated to the 2020 Census blocks by the Statewide Database.

For more information about the CVAP products, visit <https://www.census.gov/programs-surveys/decennial-census/about/voting-rights/cvap.html> and

[https://www2.census.gov/programs-surveys/decennial/rdo/technical-documentation/special-tabulation/CVAP\\_2015-2019\\_ACS\\_documentation.pdf](https://www2.census.gov/programs-surveys/decennial/rdo/technical-documentation/special-tabulation/CVAP_2015-2019_ACS_documentation.pdf)

# PROPOSAL 4A

## County of Orange 2021 Redistricting

**Table 4. Adjusted 2020 Census Population by District and 2020 Census Place**

### DISTRICT 1

Place	Total Population	Percent of District
Anaheim*	14,358	2.3%
Cypress	50,235	7.9%
Fountain Valley	57,120	9.0%
Garden Grove*	169,358	26.7%
Huntington Beach*	84,495	13.3%
La Palma	15,597	2.5%
Los Alamitos	11,795	1.9%
Midway City CDP	8,845	1.4%
Orange*	8,000	1.3%
Rossmoor CDP	10,634	1.7%
Santa Ana*	37,277	5.9%
Seal Beach	25,283	4.0%
Stanton	38,067	6.0%
Unincorporated	13,080	2.1%
Westminster	91,083	14.3%
<b>District 1 Total</b>	<b>635,227</b>	<b>100.0%</b>

### DISTRICT 2

Place	Total Population	Percent of District
Anaheim*	148,154	23.5%
Costa Mesa*	37,161	5.9%
Fullerton*	0	0.0%
Garden Grove*	2,988	0.5%
Orange*	91,158	14.4%
Placentia*	4,811	0.8%
Santa Ana*	274,116	43.4%
Tustin*	68,280	10.8%
Unincorporated	4,253	0.7%
<b>District 2 Total</b>	<b>630,921</b>	<b>100.0%</b>

### DISTRICT 3

Place	Total Population	Percent of District
Anaheim*	11,710	1.8%
Irvine	307,958	48.2%
Lake Forest	85,965	13.5%
Mission Viejo*	93,760	14.7%
Modjeska CDP	632	0.1%
North Tustin CDP	25,749	4.0%
Orange*	40,903	6.4%
Rancho Santa Margarita	48,000	7.5%
Santa Ana*	0	0.0%
Silverado CDP	932	0.1%
Trabuco Canyon CDP	1,020	0.2%
Tustin*	12,132	1.9%
Unincorporated	4,161	0.7%
Villa Park	5,850	0.9%
Williams Canyon CDP	93	0.0%
<b>District 3 Total</b>	<b>638,865</b>	<b>100.0%</b>

### DISTRICT 4

Place	Total Population	Percent of District
Anaheim*	173,531	27.5%
Brea	47,397	7.5%
Buena Park	84,187	13.3%
Fullerton*	143,930	22.8%
La Habra	63,234	10.0%
Orange*	130	0.0%
Placentia*	47,114	7.5%
Unincorporated	4,226	0.7%
Yorba Linda	68,415	10.8%
<b>District 4 Total</b>	<b>632,164</b>	<b>100.0%</b>

### DISTRICT 5

Place	Total Population	Percent of District
Aliso Viejo	52,222	8.0%
Costa Mesa*	74,978	11.4%
Coto de Caza CDP	14,723	2.2%
Dana Point	33,144	5.1%
Huntington Beach*	114,538	17.5%
Ladera Ranch CDP	26,188	4.0%
Laguna Beach	23,061	3.5%
Laguna Hills	31,399	4.8%
Laguna Niguel	64,417	9.8%
Laguna Woods	17,658	2.7%
Las Flores CDP	6,004	0.9%
Mission Viejo*	0	0.0%
Newport Beach	85,338	13.0%
Rancho Mission Viejo CDP	10,385	1.6%
San Clemente	64,384	9.8%
San Juan Capistrano	35,271	5.4%
Unincorporated	2,123	0.3%
<b>District 5 Total</b>	<b>655,833</b>	<b>100.0%</b>

\*City split by proposed district.

Percent shares calculated using unrounded numbers, but table displays only to tenths; therefore, percents displayed may not sum to 100%.

**PROPOSAL 4A**  
**County of Orange 2021 Redistricting**

**Table 5. Adjusted 2020 Census Population 18 Years and Over by Race/Ethnicity**

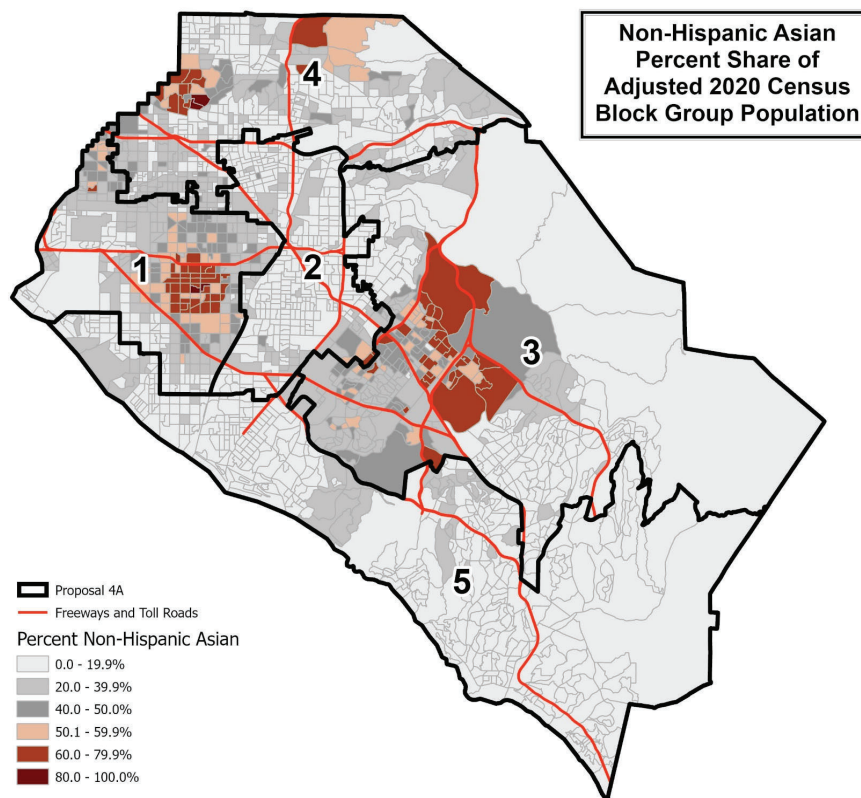
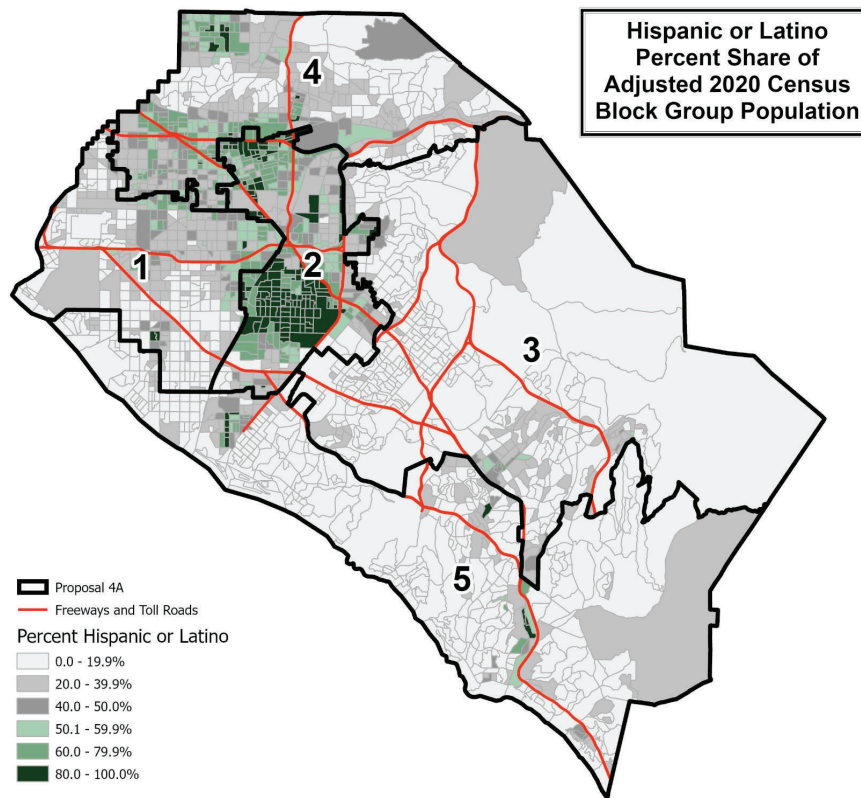
District	Total Population 18 and Over	Hispanic or Latino of any Race	Non- Hispanic White	Non- Hispanic Black or African- American	Non-Hispanic American Indian or Alaska Native	Non- Hispanic Asian	Non-Hispanic Native Hawaiian or Other Pacific Islander	Non- Hispanic Some Other Race	Non- Hispanic Two or More Races
<b>1</b>	508,240	142,436	152,436	7,554	864	187,066	2,079	1,972	13,833
	100.0%	28.0%	30.0%	1.5%	0.2%	36.8%	0.4%	0.4%	2.7%
<b>2</b>	481,443	298,992	102,961	7,723	917	57,927	1,269	1,723	9,931
	100.0%	62.1%	21.4%	1.6%	0.2%	12.0%	0.3%	0.4%	2.1%
<b>3</b>	506,777	78,988	242,689	8,978	572	150,457	717	2,528	21,848
	100.0%	15.6%	47.9%	1.8%	0.1%	29.7%	0.1%	0.5%	4.3%
<b>4</b>	496,991	175,581	168,350	11,683	1,073	122,824	1,343	2,163	13,974
	100.0%	35.3%	33.9%	2.4%	0.2%	24.7%	0.3%	0.4%	2.8%
<b>5</b>	532,228	91,520	356,967	5,529	1,076	51,589	796	2,744	22,007
	100.0%	17.2%	67.1%	1.0%	0.2%	9.7%	0.1%	0.5%	4.1%
<b>COUNTY TOTAL</b>	2,525,679	787,517	1,023,403	41,467	4,502	569,863	6,204	11,130	81,593
	100.0%	31.2%	40.5%	1.6%	0.2%	22.6%	0.2%	0.4%	3.2%

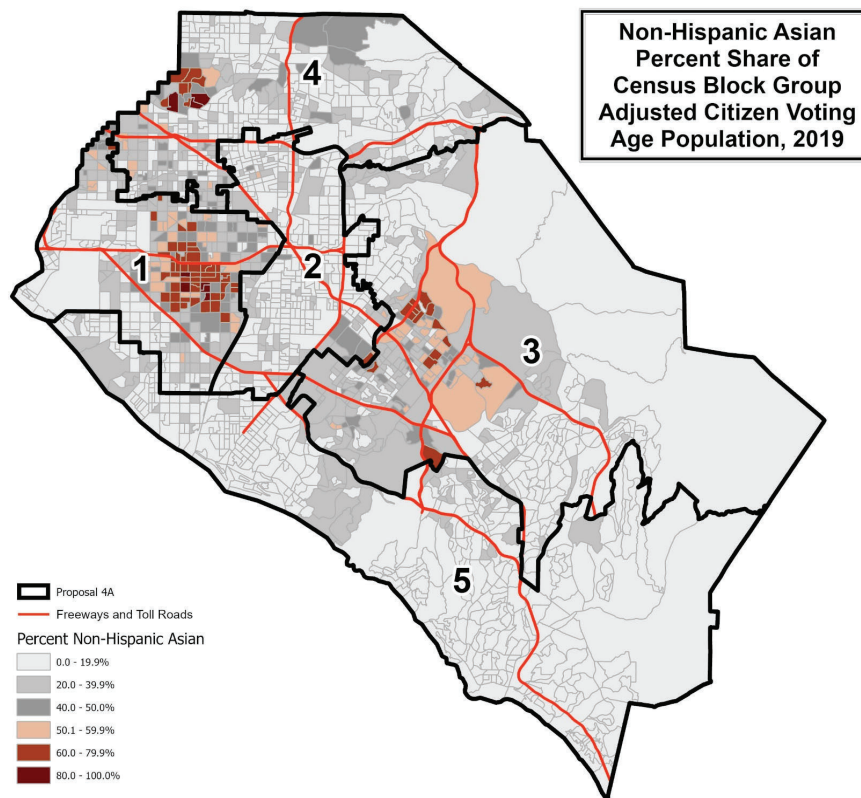
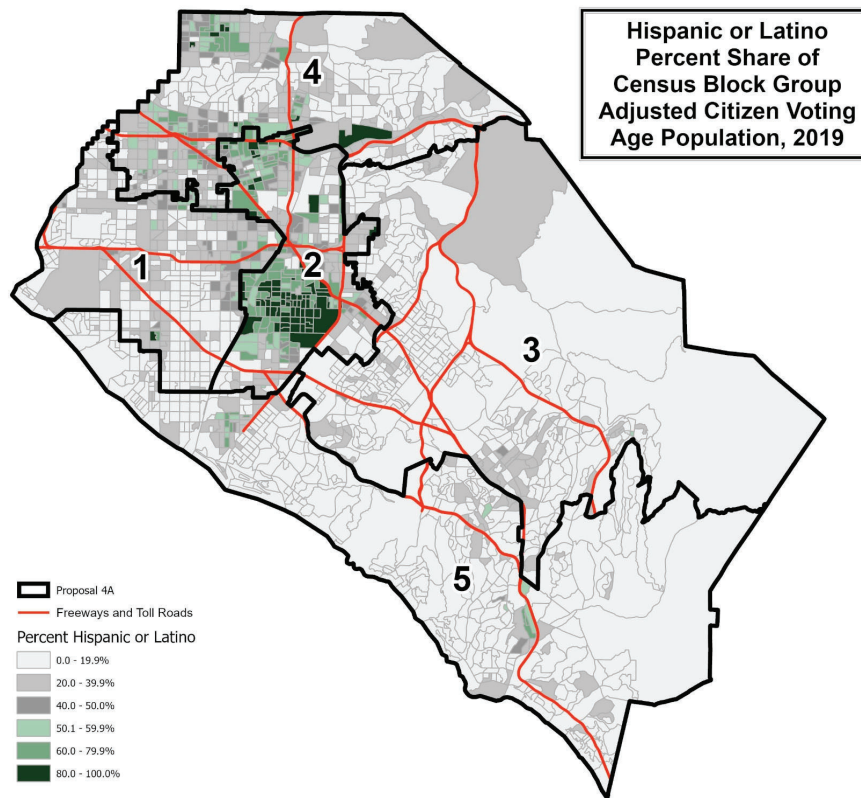
Percent shares calculated using unrounded numbers, but table displays only to tenths; therefore, percents displayed may not sum to 100%.

Source: Statewide Database; Adjusted, incarcerated persons reallocated P.L. 94-171 2020 Redistricting Data, Revised 9/27/2021

## **PROPOSAL 4A**

Contact Name: James Dinwiddie  
Organization: Fifth District  
Submitted Description: "Modified Map 4 seeks to provide greater connectivity of South County Communities."



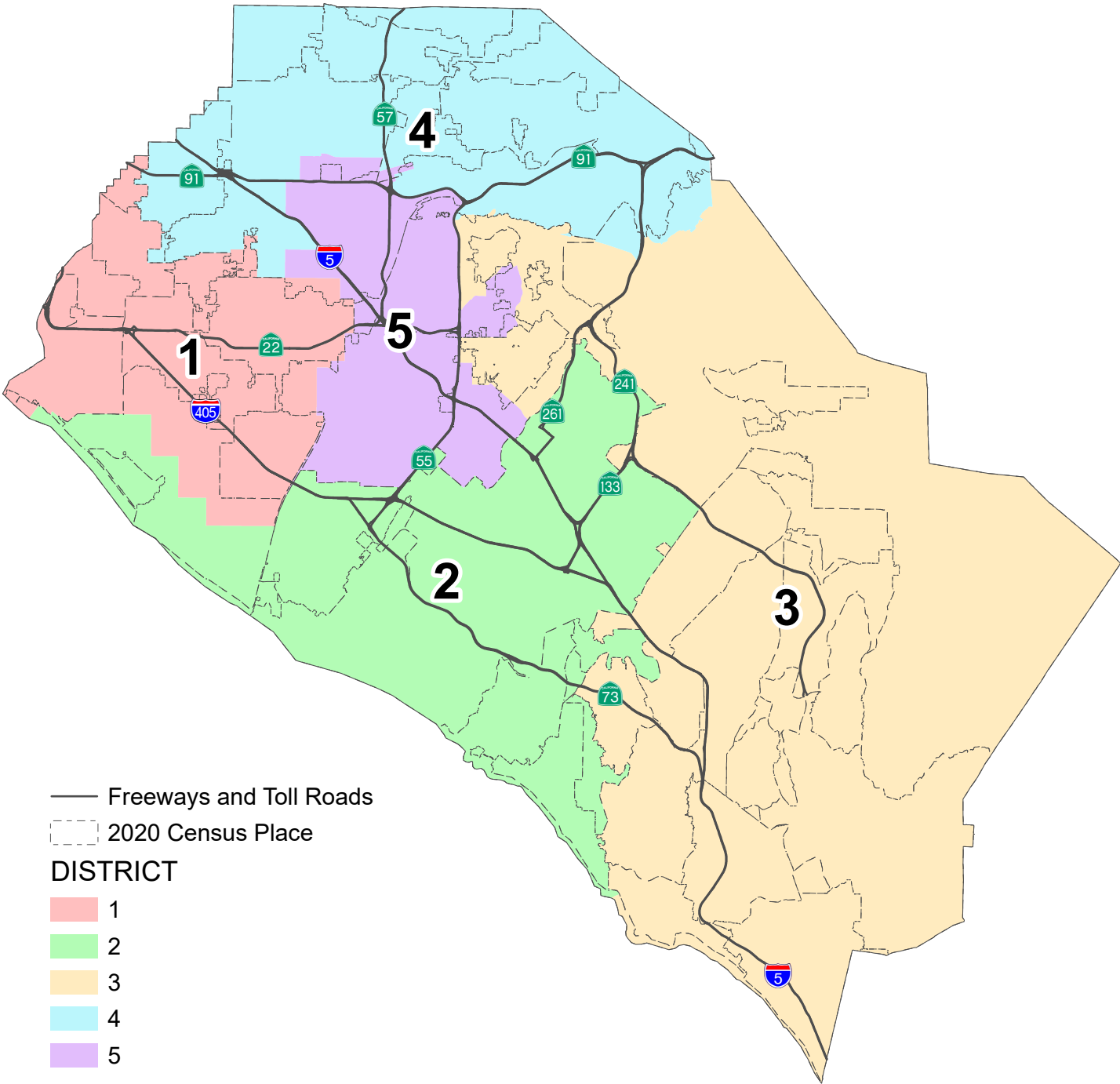


This page is intentionally left blank



County of Orange 2021 Redistricting

Proposal 4B Map



This page is intentionally left blank

# PROPOSAL 4B

## County of Orange 2021 Redistricting

**Table 1. Adjusted 2020 Census Total Population by Race/Ethnicity**

District	Total Population	Hispanic or Latino of any Race	Non-Hispanic White	Non-Hispanic Black or African-American	Non-Hispanic American Indian or Alaska Native	Non-Hispanic Asian	Non-Hispanic Native Hawaiian or Other Pacific Islander	Non-Hispanic Some Other Race	Non-Hispanic Two or More Races
1	633,358	193,657	177,260	8,967	1,023	225,868	2,596	2,630	21,357
	100.0%	30.6%	28.0%	1.4%	0.2%	35.7%	0.4%	0.4%	3.4%
2	655,832	104,348	328,342	9,909	915	173,448	1,094	3,766	34,010
	100.0%	15.9%	50.1%	1.5%	0.1%	26.4%	0.2%	0.6%	5.2%
3	652,918	134,077	390,040	7,620	1,096	80,515	986	3,385	35,199
	100.0%	20.5%	59.7%	1.2%	0.2%	12.3%	0.2%	0.5%	5.4%
4	627,007	235,975	199,022	13,915	1,253	150,600	1,619	2,951	21,672
	100.0%	37.6%	31.7%	2.2%	0.2%	24.0%	0.3%	0.5%	3.5%
5	623,895	422,224	105,464	9,532	1,038	68,836	1,442	2,355	13,004
	100.0%	67.7%	16.9%	1.5%	0.2%	11.0%	0.2%	0.4%	2.1%
COUNTY TOTAL	3,193,010	1,090,281	1,200,128	49,943	5,325	699,267	7,737	15,087	125,242
	100.0%	34.1%	37.6%	1.6%	0.2%	21.9%	0.2%	0.5%	3.9%

**Table 2. Difference from 2021 Target Supervisorial District Population of 638,602**

District	Number	Percent	Percentage Spread (Largest - Smallest)
1	-5,244	-0.82%	5.00%
2	17,230	2.70%	
3	14,316	2.24%	
4	-11,595	-1.82%	
5	-14,707	-2.30%	

### Split Cities/Census Designated Places (CDPs) -

Anaheim (4)	Orange (4)
Fountain Valley (2)	Placentia (2)
Fullerton (2)	Santa Ana (3)
Garden Grove (2)	Seal Beach (2)
Huntington Beach (2)	Tustin (3)
Irvine (2)	Villa Park (2)
Laguna Woods (2)	
North Tustin CDP (2)	

Percent shares calculated using unrounded numbers, but table displays only to tenths; therefore, percents displayed may not sum to 100%.

Number in ( ) indicates number of Supervisorial Districts the city/CDP falls within.

The U.S. Census Bureau misassigned three (3) census blocks to the City of Tustin that are actually in the City of Santa Ana with a total of 260 population. Since the affected area is fully assigned to District 5, no splits are created and no correction is necessary.

**PROPOSAL 4B**  
**County of Orange 2021 Redistricting**

**Table 3. Adjusted Citizen Voting Age Population (CVAP) by Race/Ethnicity, 2015-2019 5-Year Estimates**

District	Total Estimated CVAP	Hispanic or Latino of any Race	Non- Hispanic White	Non-Hispanic Black or African- American	Non-Hispanic American Indian or Alaska Native	Non- Hispanic Asian	Non-Hispanic Native Hawaiian or Other Pacific Islander	Non- Hispanic Two or More Races
<b>1</b>	428,267	95,885	165,139	7,296	1,109	147,414	1,324	8,875
	100.0%	22.5%	38.7%	1.7%	0.3%	34.5%	0.3%	2.1%
<b>2</b>	429,107	53,165	274,830	6,720	693	80,686	1,089	10,759
	100.0%	12.4%	64.2%	1.6%	0.2%	18.9%	0.3%	2.5%
<b>3</b>	465,385	67,949	325,375	6,946	817	51,702	612	11,492
	100.0%	14.6%	70.0%	1.5%	0.2%	11.1%	0.1%	2.5%
<b>4</b>	408,036	116,896	181,520	11,408	713	87,519	1,442	7,665
	100.0%	28.7%	44.6%	2.8%	0.2%	21.5%	0.4%	1.9%
<b>5</b>	334,881	177,020	99,697	7,185	601	44,071	1,100	4,262
	100.0%	53.0%	29.9%	2.2%	0.2%	13.2%	0.3%	1.3%
<b>COUNTY TOTAL</b>	2,065,676	510,915	1,046,561	39,555	3,933	411,392	5,567	43,053
	100.0%	24.8%	50.8%	1.9%	0.2%	20.0%	0.3%	2.1%

Source: Statewide Database 2015-2019 Citizen Voting Age Population, adjusted to reflect reallocated incarcerated persons, on 2020 Census Blocks, Revised 9/27/2021 <https://statewidedatabase.org/redistricting2021/counties.html>

Notes: Percentages are calculated from sum of individual categories, not Total Estimated CVAP.

Because this is a special tabulation of data and not part of the standard data products shown on the Census Bureau's data.census.gov website, these estimates are rounded. Therefore, individual categories may not exactly add to the total.

For example, the sum of each of the race groups for non-Hispanics may not be the same as the estimate given for non-Hispanics. These estimates will not match counts from the 2020 Census.

The original data source for the Citizen Voting Age Population (CVAP) is the American Community Survey (ACS). The ACS is an ongoing survey by the U.S. Census Bureau sent to approximately 250,000 households each month.

The ACS estimates used to develop these data were collected from January 1, 2015 to December 31, 2019 utilizing the 2010 Census block groups, which were disaggregated to the 2020 Census blocks by the Statewide Database.

For more information about the CVAP products, visit <https://www.census.gov/programs-surveys/decennial-census/about/voting-rights/cvap.html> and

[https://www2.census.gov/programs-surveys/decennial/rdo/technical-documentation/special-tabulation/CVAP\\_2015-2019\\_ACS\\_documentation.pdf](https://www2.census.gov/programs-surveys/decennial/rdo/technical-documentation/special-tabulation/CVAP_2015-2019_ACS_documentation.pdf)

**PROPOSAL 4B**  
**County of Orange 2021 Redistricting**

**Table 4. Adjusted 2020 Census Population by District and 2020 Census Place**

**DISTRICT 1**

Place	Total Population	Percent of District
Anaheim*	16,319	2.6%
Cypress	50,235	7.9%
Fountain Valley*	56,898	9.0%
Garden Grove*	168,249	26.6%
Huntington Beach*	92,007	14.5%
La Palma	15,597	2.5%
Los Alamitos	11,795	1.9%
Midway City CDP	8,845	1.4%
Orange*	1,258	0.2%
Rossmoor CDP	10,634	1.7%
Santa Ana*	34,477	5.4%
Seal Beach*	24,814	3.9%
Stanton	38,067	6.0%
Unincorporated	13,080	2.1%
Westminster	91,083	14.4%
<b>District 1 Total</b>	<b>633,358</b>	<b>100.0%</b>

**DISTRICT 2**

Place	Total Population	Percent of District
Costa Mesa	112,139	17.1%
Huntington Beach*	107,026	16.3%
Irvine*	307,958	47.0%
Laguna Beach	23,061	3.5%
Laguna Woods*	17,658	2.7%
Newport Beach	85,338	13.0%
Santa Ana*	158	0.0%
Seal Beach*	469	0.1%
Tustin*	0	0.0%
Unincorporated	2,025	0.3%
<b>District 2 Total</b>	<b>655,832</b>	<b>100.0%</b>

**DISTRICT 3**

Place	Total Population	Percent of District
Aliso Viejo	52,222	8.0%
Anaheim*	397	0.1%
Coto de Caza CDP	14,723	2.3%
Dana Point	33,144	5.1%
Ladera Ranch CDP	26,188	4.0%
Laguna Hills	31,399	4.8%
Laguna Niguel	64,417	9.9%
Laguna Woods*	0	0.0%
Lake Forest	85,965	13.2%
Las Flores CDP	6,004	0.9%
Mission Viejo	93,760	14.4%
Modjeska CDP	632	0.1%
North Tustin CDP*	24,845	3.8%
Orange*	36,129	5.5%
Rancho Mission Viejo CDP	10,385	1.6%
Rancho Santa Margarita	48,000	7.4%
San Clemente	64,384	9.9%
San Juan Capistrano	35,271	5.4%
Silverado CDP	932	0.1%
Trabuco Canyon CDP	1,020	0.2%
Tustin*	14,778	2.3%
Unincorporated	2,380	0.4%
Villa Park*	5,850	0.9%
Williams Canyon CDP	93	0.0%
<b>District 3 Total</b>	<b>652,918</b>	<b>100.0%</b>

**DISTRICT 4**

Place	Total Population	Percent of District
Anaheim*	179,912	28.7%
Brea	47,397	7.6%
Buena Park	84,187	13.4%
Fullerton*	132,130	21.1%
La Habra	63,234	10.1%
Orange*	392	0.1%
Placentia*	47,114	7.5%
Unincorporated	4,226	0.7%
Yorba Linda	68,415	10.9%
<b>District 4 Total</b>	<b>627,007</b>	<b>100.0%</b>

**DISTRICT 5**

Place	Total Population	Percent of District
Anaheim*	151,125	24.2%
Fountain Valley*	222	0.0%
Fullerton*	11,800	1.9%
Garden Grove*	4,097	0.7%
Irvine*	0	0.0%
North Tustin CDP*	904	0.1%
Orange*	102,412	16.4%
Placentia*	4,811	0.8%
Santa Ana*	276,758	44.4%
Tustin*	65,634	10.5%
Unincorporated	6,132	1.0%
Villa Park*	0	0.0%
<b>District 5 Total</b>	<b>623,895</b>	<b>100.0%</b>

\*City/CDP split by proposed district.

Percent shares calculated using unrounded numbers, but table displays only to tenths; therefore, percents displayed may not sum to 100%.

**PROPOSAL 4B**  
**County of Orange 2021 Redistricting**

**Table 5. Adjusted 2020 Census Population 18 Years and Over by Race/Ethnicity**

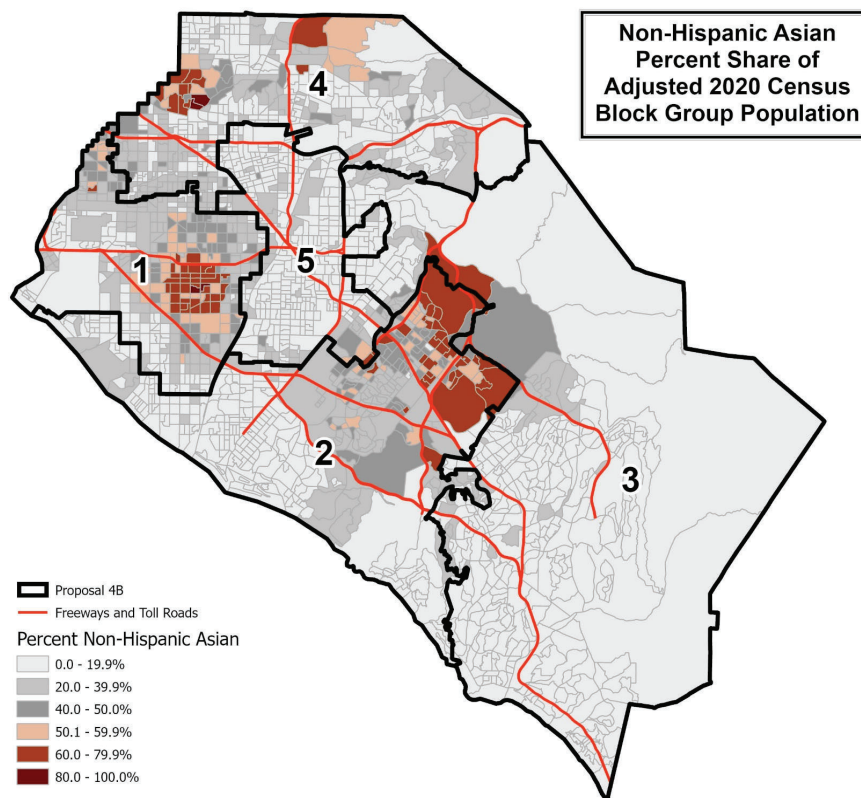
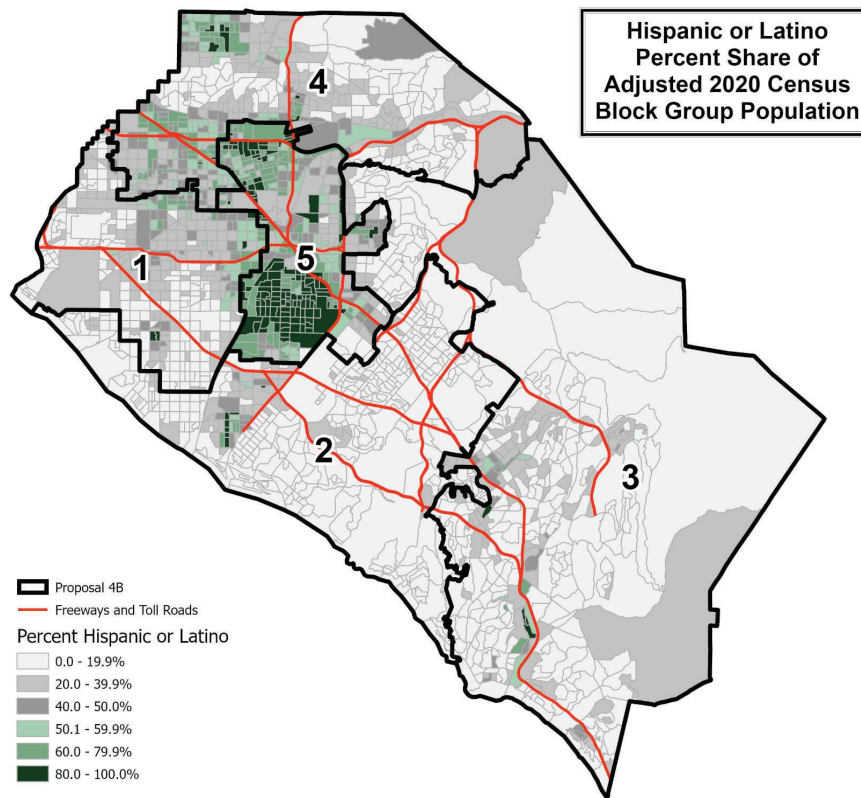
District	Total Population 18 and Over	Hispanic or Latino of any Race	Non- Hispanic White	Non- Hispanic Black or African- American	Non-Hispanic American Indian or Alaska Native	Non- Hispanic Asian	Non-Hispanic Native Hawaiian or Other Pacific Islander	Non- Hispanic Some Other Race	Non- Hispanic Two or More Races
<b>1</b>	506,039	139,957	153,829	7,343	859	185,981	2,082	1,996	13,992
	100.0%	27.7%	30.4%	1.5%	0.2%	36.8%	0.4%	0.4%	2.8%
<b>2</b>	534,428	79,277	282,548	8,279	761	137,277	874	2,884	22,528
	100.0%	14.8%	52.9%	1.5%	0.1%	25.7%	0.2%	0.5%	4.2%
<b>3</b>	516,555	95,645	322,627	6,437	936	65,770	793	2,488	21,859
	100.0%	18.5%	62.5%	1.2%	0.2%	12.7%	0.2%	0.5%	4.2%
<b>4</b>	493,293	169,724	171,088	11,389	1,066	122,521	1,311	2,146	14,048
	100.0%	34.4%	34.7%	2.3%	0.2%	24.8%	0.3%	0.4%	2.8%
<b>5</b>	475,364	302,914	93,311	8,019	880	58,314	1,144	1,616	9,166
	100.0%	63.7%	19.6%	1.7%	0.2%	12.3%	0.2%	0.3%	1.9%
<b>COUNTY TOTAL</b>	2,525,679	787,517	1,023,403	41,467	4,502	569,863	6,204	11,130	81,593
	100.0%	31.2%	40.5%	1.6%	0.2%	22.6%	0.2%	0.4%	3.2%

Percent shares calculated using unrounded numbers, but table displays only to tenths; therefore, percents displayed may not sum to 100%.

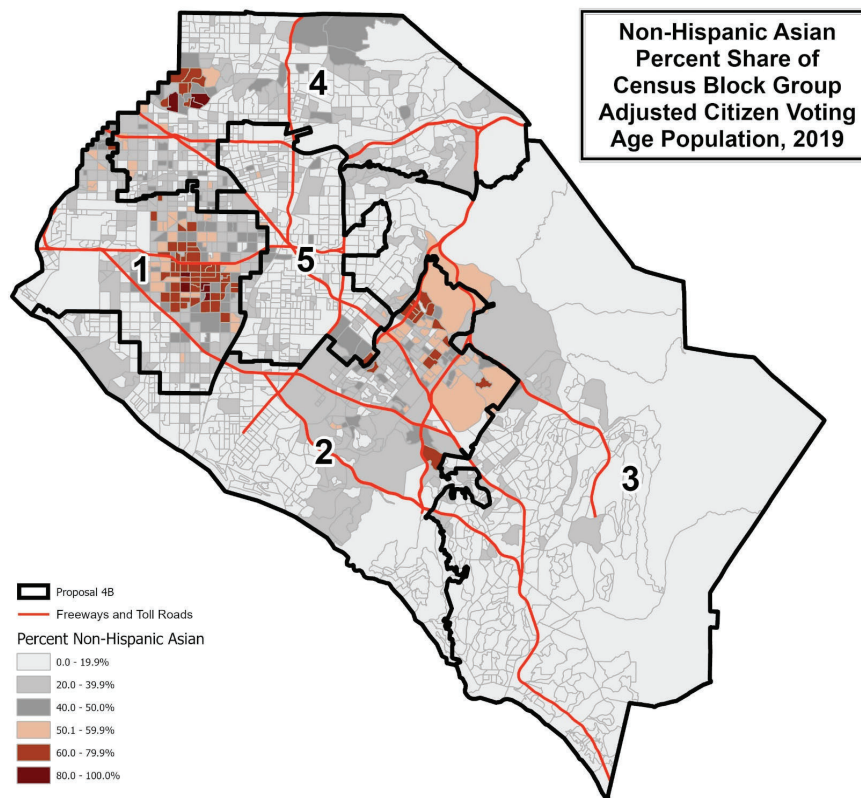
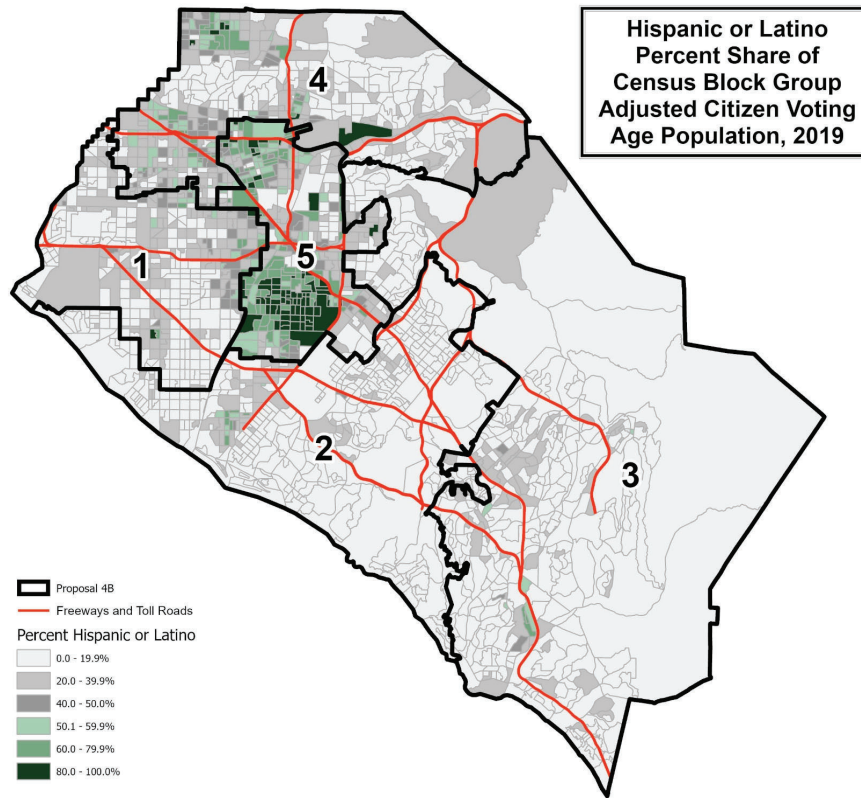
Source: Statewide Database; Adjusted, incarcerated persons reallocated P.L. 94-171 2020 Redistricting Data, Revised 9/27/2021

## **PROPOSAL 4B**

Contact Name: Nick Anas  
Organization: Supervisor Katrina Foley  
Submitted Description: "District 2 - Revisions to Proposal 4 - Final"



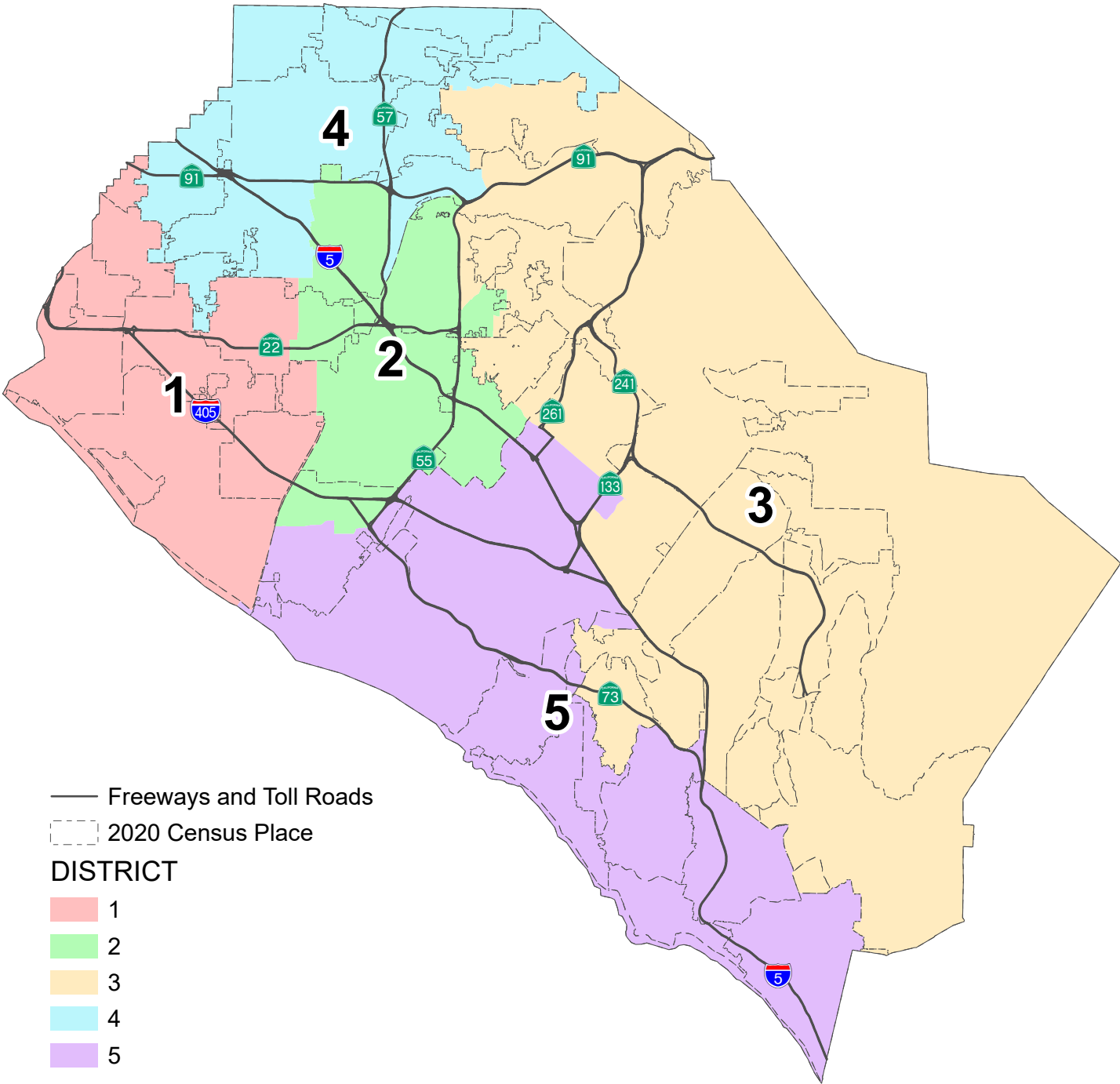




This page is intentionally left blank

County of Orange 2021 Redistricting

Proposal 4C Map



This page is intentionally left blank

# PROPOSAL 4C

## County of Orange 2021 Redistricting

**Table 1. Adjusted 2020 Census Total Population by Race/Ethnicity**

District	Total Population	Hispanic or Latino of any Race	Non-Hispanic White	Non-Hispanic Black or African-American	Non-Hispanic American Indian or Alaska Native	Non-Hispanic Asian	Non-Hispanic Native Hawaiian or Other Pacific Islander	Non-Hispanic Some Other Race	Non-Hispanic Two or More Races
1	624,166	147,259	233,089	8,113	1,092	204,060	2,232	2,842	25,479
	100.0%	23.6%	37.3%	1.3%	0.2%	32.7%	0.4%	0.5%	4.1%
2	658,490	425,150	119,447	9,275	1,117	84,779	1,782	2,533	14,407
	100.0%	64.6%	18.1%	1.4%	0.2%	12.9%	0.3%	0.4%	2.2%
3	665,026	122,461	353,362	8,788	888	139,952	968	3,338	35,269
	100.0%	18.4%	53.1%	1.3%	0.1%	21.0%	0.1%	0.5%	5.3%
4	620,138	280,790	152,305	14,622	1,237	148,145	1,962	2,813	18,264
	100.0%	45.3%	24.6%	2.4%	0.2%	23.9%	0.3%	0.5%	2.9%
5	625,190	114,621	341,925	9,145	991	122,331	793	3,561	31,823
	100.0%	18.3%	54.7%	1.5%	0.2%	19.6%	0.1%	0.6%	5.1%
COUNTY TOTAL	3,193,010	1,090,281	1,200,128	49,943	5,325	699,267	7,737	15,087	125,242
	100.0%	34.1%	37.6%	1.6%	0.2%	21.9%	0.2%	0.5%	3.9%

**Table 2. Difference from 2021 Target Supervisorial District Population of 638,602**

District	Number	Percent	Percentage Spread (Largest - Smallest)
1	-14,436	-2.26%	7.03%
2	19,888	3.11%	
3	26,424	4.14%	
4	-18,464	-2.89%	
5	-13,412	-2.10%	

### Split Cities/Census Designated Places (CDPs) -

Anaheim (4)	Placentia (2)
Costa Mesa (3)	San Juan Capistrano (2)
Fountain Valley (2)	Santa Ana (2)
Fullerton (2)	Stanton (2)
Garden Grove (3)	Tustin (2)
Irvine (2)	Yorba Linda (2)
Laguna Hills (2)	
Orange (2)	

Percent shares calculated using unrounded numbers, but table displays only to tenths; therefore, percents displayed may not sum to 100%.

Number in ( ) indicates number of Supervisorial Districts the city/CDP falls within.

The U.S. Census Bureau misassigned three (3) census blocks to the City of Tustin that are actually in the City of Santa Ana with a total of 260 population. Since the affected area is fully assigned to District 2, no splits are created and no correction is necessary.

**PROPOSAL 4C**  
**County of Orange 2021 Redistricting**

**Table 3. Adjusted Citizen Voting Age Population (CVAP) by Race/Ethnicity, 2015-2019 5-Year Estimates**

District	Total Estimated CVAP	Hispanic or Latino of any Race	Non- Hispanic White	Non-Hispanic Black or African- American	Non-Hispanic American Indian or Alaska Native	Non- Hispanic Asian	Non-Hispanic Native Hawaiian or Other Pacific Islander	Non- Hispanic Two or More Races
<b>1</b>	442,404	77,450	210,912	7,039	1,162	133,047	1,364	10,272
	100.0%	17.6%	47.8%	1.6%	0.3%	30.2%	0.3%	2.3%
<b>2</b>	367,550	182,596	113,693	7,381	662	56,355	1,231	4,572
	100.0%	49.8%	31.0%	2.0%	0.2%	15.4%	0.3%	1.2%
<b>3</b>	450,500	64,873	292,046	7,045	744	74,210	503	10,441
	100.0%	14.4%	64.9%	1.6%	0.2%	16.5%	0.1%	2.3%
<b>4</b>	380,644	129,533	141,484	11,974	764	87,287	1,807	6,879
	100.0%	34.1%	37.3%	3.2%	0.2%	23.0%	0.5%	1.8%
<b>5</b>	424,578	56,463	288,426	6,116	601	60,493	662	10,889
	100.0%	13.3%	68.1%	1.4%	0.1%	14.3%	0.2%	2.6%
<b>COUNTY TOTAL</b>	2,065,676	510,915	1,046,561	39,555	3,933	411,392	5,567	43,053
	100.0%	24.8%	50.8%	1.9%	0.2%	20.0%	0.3%	2.1%

Source: Statewide Database 2015-2019 Citizen Voting Age Population, adjusted to reflect reallocated incarcerated persons, on 2020 Census Blocks, Revised 9/27/2021 <https://statewidedatabase.org/redistricting2021/counties.html>

Notes: Percentages are calculated from sum of individual categories, not Total Estimated CVAP.

Because this is a special tabulation of data and not part of the standard data products shown on the Census Bureau's data.census.gov website, these estimates are rounded. Therefore, individual categories may not exactly add to the total.

For example, the sum of each of the race groups for non-Hispanics may not be the same as the estimate given for non-Hispanics. These estimates will not match counts from the 2020 Census.

The original data source for the Citizen Voting Age Population (CVAP) is the American Community Survey (ACS). The ACS is an ongoing survey by the U.S. Census Bureau sent to approximately 250,000 households each month.

The ACS estimates used to develop these data were collected from January 1, 2015 to December 31, 2019 utilizing the 2010 Census block groups, which were disaggregated to the 2020 Census blocks by the Statewide Database.

For more information about the CVAP products, visit <https://www.census.gov/programs-surveys/decennial-census/about/voting-rights/cvap.html> and

[https://www2.census.gov/programs-surveys/decennial/rdo/technical-documentation/special-tabulation/CVAP\\_2015-2019\\_ACS\\_documentation.pdf](https://www2.census.gov/programs-surveys/decennial/rdo/technical-documentation/special-tabulation/CVAP_2015-2019_ACS_documentation.pdf)

**PROPOSAL 4C**  
**County of Orange 2021 Redistricting**

**Table 4. Adjusted 2020 Census Population by District and 2020 Census Place**

**DISTRICT 1**

Place	Total Population	Percent of District
Anaheim*	2,954	0.5%
Costa Mesa*	0	0.0%
Cypress	50,235	8.0%
Fountain Valley*	56,898	9.1%
Garden Grove*	117,557	18.8%
Huntington Beach	199,033	31.9%
La Palma	15,597	2.5%
Los Alamitos	11,795	1.9%
Midway City CDP	8,845	1.4%
Rossmoor CDP	10,634	1.7%
Santa Ana*	32,514	5.2%
Seal Beach	25,283	4.1%
Stanton*	352	0.1%
Unincorporated	1,386	0.2%
Westminster	91,083	14.6%
<b>District 1 Total</b>	<b>624,166</b>	<b>100.0%</b>

**DISTRICT 2**

Place	Total Population	Percent of District
Anaheim*	116,627	17.7%
Costa Mesa*	37,161	5.6%
Fountain Valley*	222	0.0%
Fullerton*	0	0.0%
Garden Grove*	53,910	8.2%
Orange*	99,158	15.1%
Santa Ana*	278,879	42.4%
Tustin*	68,280	10.4%
Unincorporated	4,253	0.6%
<b>District 2 Total</b>	<b>658,490</b>	<b>100.0%</b>

**DISTRICT 3**

Place	Total Population	Percent of District
Aliso Viejo	52,222	7.9%
Anaheim*	53,033	8.0%
Coto de Caza CDP	14,723	2.2%
Irvine*	68,622	10.3%
Ladera Ranch CDP	26,188	3.9%
Laguna Hills*	28,163	4.2%
Laguna Woods	17,658	2.7%
Lake Forest	85,965	12.9%
Las Flores CDP	6,004	0.9%
Mission Viejo	93,760	14.1%
Modjeska CDP	632	0.1%
North Tustin CDP	25,749	3.9%
Orange*	41,033	6.2%
Placentia*	1,960	0.3%
Rancho Mission Viejo CDP	10,385	1.6%
Rancho Santa Margarita	48,000	7.2%
San Juan Capistrano*	0	0.0%
Silverado CDP	932	0.1%
Trabuco Canyon CDP	1,020	0.2%
Tustin*	12,132	1.8%
Unincorporated	6,692	1.0%
Villa Park	5,850	0.9%
Williams Canyon CDP	93	0.0%
Yorba Linda*	64,210	9.7%
<b>District 3 Total</b>	<b>665,026</b>	<b>100.0%</b>

**DISTRICT 4**

Place	Total Population	Percent of District
Anaheim*	175,139	28.2%
Brea	47,397	7.6%
Buena Park	84,187	13.6%
Fullerton*	143,930	23.2%
Garden Grove*	879	0.1%
La Habra	63,234	10.2%
Placentia*	49,965	8.1%
Stanton*	37,715	6.1%
Unincorporated	13,487	2.2%
Yorba Linda*	4,205	0.7%
<b>District 4 Total</b>	<b>620,138</b>	<b>100.0%</b>

**DISTRICT 5**

Place	Total Population	Percent of District
Costa Mesa*	74,978	12.0%
Dana Point	33,144	5.3%
Irvine*	239,336	38.3%
Laguna Beach	23,061	3.7%
Laguna Hills*	3,236	0.5%
Laguna Niguel	64,417	10.3%
Newport Beach	85,338	13.6%
San Clemente	64,384	10.3%
San Juan Capistrano*	35,271	5.6%
Unincorporated	2,025	0.3%
<b>District 5 Total</b>	<b>625,190</b>	<b>100.0%</b>

\*City split by proposed district.

Percent shares calculated using unrounded numbers, but table displays only to tenths; therefore, percents displayed may not sum to 100%.

**PROPOSAL 4C**  
**County of Orange 2021 Redistricting**

**Table 5. Adjusted 2020 Census Population 18 Years and Over by Race/Ethnicity**

District	Total Population 18 and Over	Hispanic or Latino of any Race	Non- Hispanic White	Non- Hispanic Black or African- American	Non-Hispanic American Indian or Alaska Native	Non- Hispanic Asian	Non-Hispanic Native Hawaiian or Other Pacific Islander	Non- Hispanic Some Other Race	Non- Hispanic Two or More Races
<b>1</b>	505,335	107,127	201,650	6,677	940	168,144	1,808	2,224	16,765
	100.0%	21.2%	39.9%	1.3%	0.2%	33.3%	0.4%	0.4%	3.3%
<b>2</b>	505,236	305,856	105,587	7,875	953	71,655	1,410	1,777	10,123
	100.0%	60.5%	20.9%	1.6%	0.2%	14.2%	0.3%	0.4%	2.0%
<b>3</b>	521,374	87,341	292,281	7,328	725	109,415	769	2,400	21,115
	100.0%	16.8%	56.1%	1.4%	0.1%	21.0%	0.1%	0.5%	4.0%
<b>4</b>	484,655	201,371	132,881	11,911	1,044	121,628	1,574	2,036	12,210
	100.0%	41.5%	27.4%	2.5%	0.2%	25.1%	0.3%	0.4%	2.5%
<b>5</b>	509,079	85,822	291,004	7,676	840	99,021	643	2,693	21,380
	100.0%	16.9%	57.2%	1.5%	0.2%	19.5%	0.1%	0.5%	4.2%
<b>COUNTY TOTAL</b>	2,525,679	787,517	1,023,403	41,467	4,502	569,863	6,204	11,130	81,593
	100.0%	31.2%	40.5%	1.6%	0.2%	22.6%	0.2%	0.4%	3.2%

Percent shares calculated using unrounded numbers, but table displays only to tenths; therefore, percents displayed may not sum to 100%.

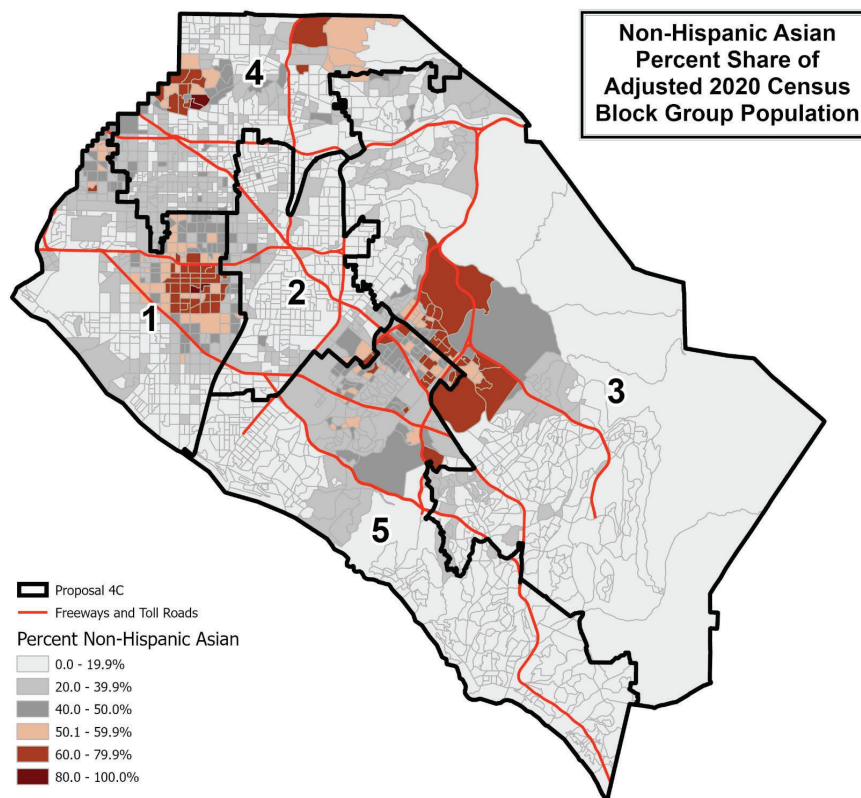
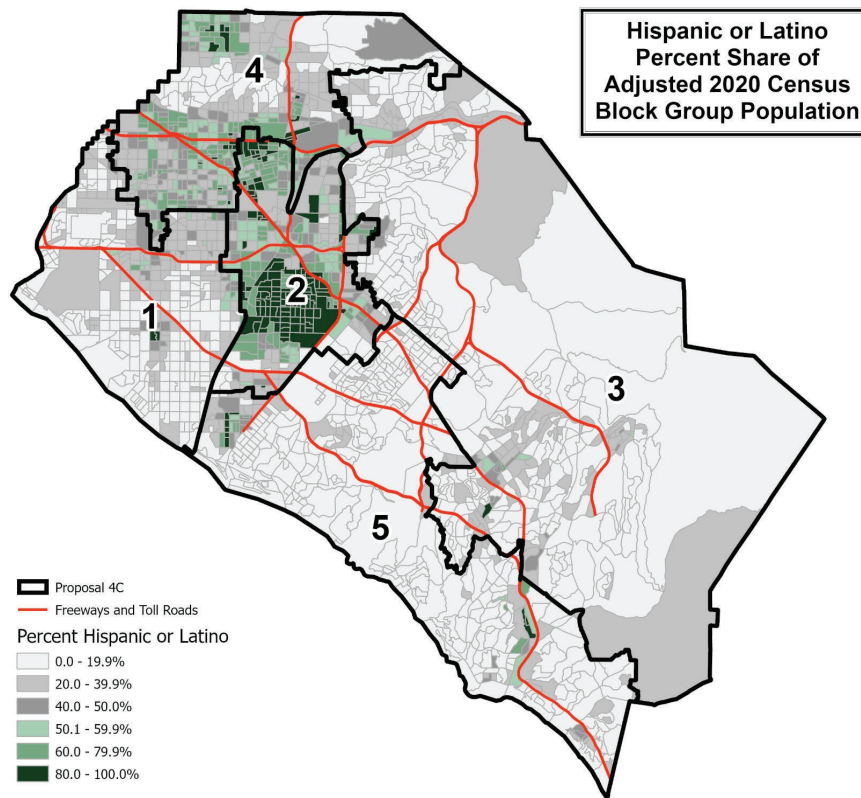
Source: Statewide Database; Adjusted, incarcerated persons reallocated P.L. 94-171 2020 Redistricting Data, Revised 9/27/2021

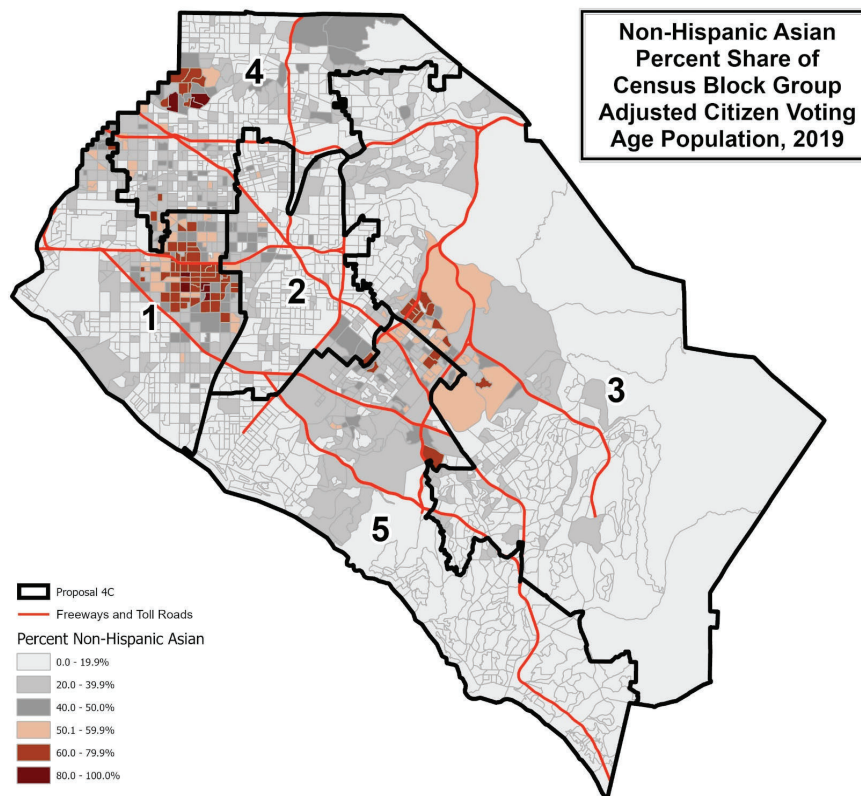
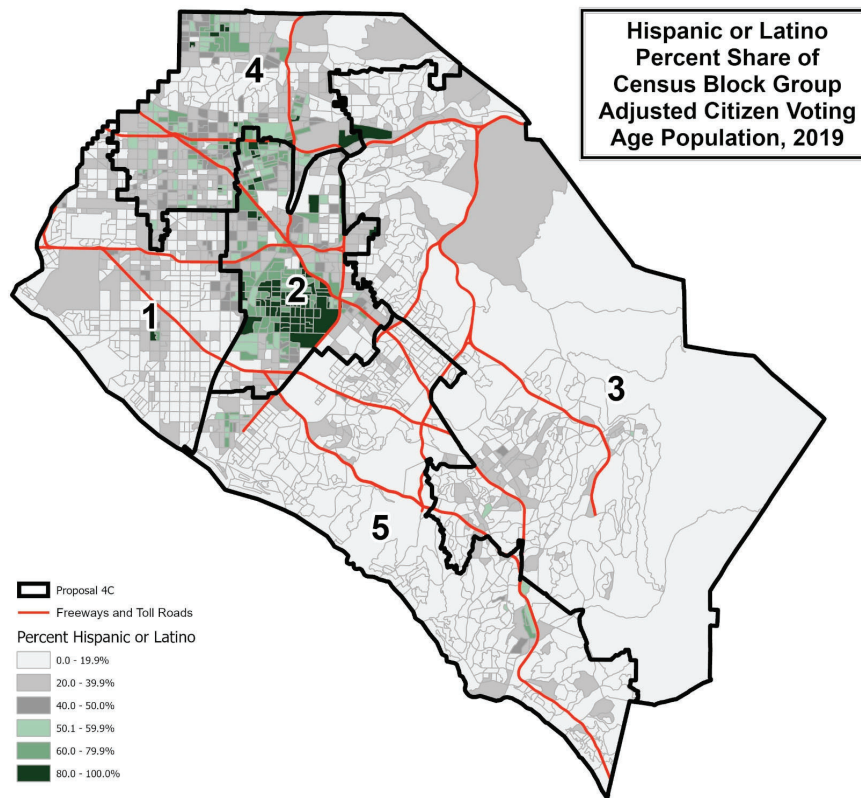


## **PROPOSAL 4C**

Contact Name: LaShe Rodriguez  
Organization: BOS-District 4  
Submitted Description: "Deviation D. 1,4,3

Plan Objectives  
To keep communities of interest intact"

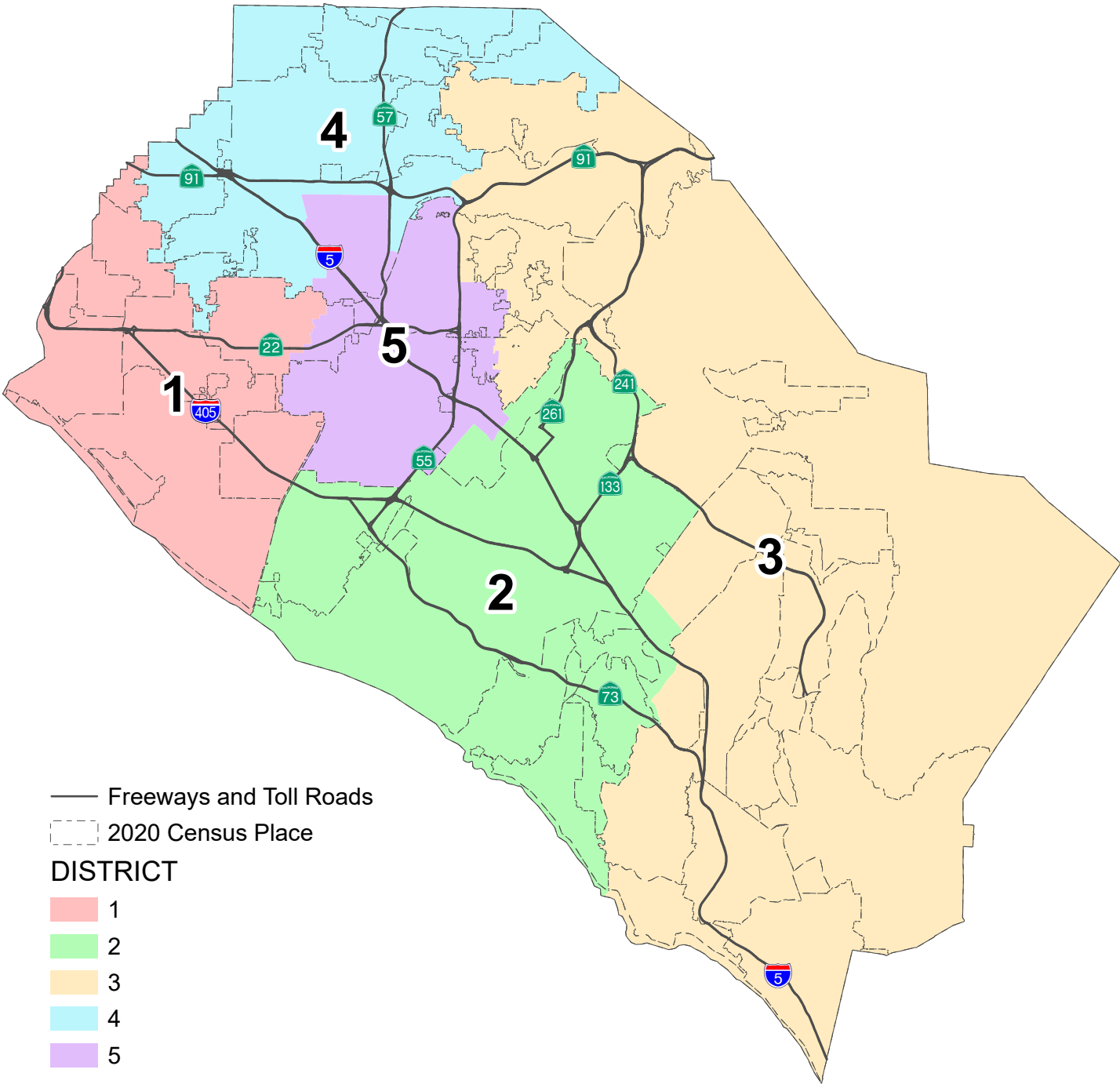




This page is intentionally left blank

County of Orange 2021 Redistricting

Proposal 5A Map



This page is intentionally left blank

## PROPOSAL 5A

### County of Orange 2021 Redistricting

**Table 1. Adjusted 2020 Census Total Population by Race/Ethnicity**

District	Total Population	Hispanic or Latino of any Race	Non-Hispanic White	Non-Hispanic Black or African-American	Non-Hispanic American Indian or Alaska Native	Non-Hispanic Asian	Non-Hispanic Native Hawaiian or Other Pacific Islander	Non-Hispanic Some Other Race	Non-Hispanic Two or More Races
1	608,672	139,812	233,285	8,077	1,068	195,989	2,188	2,811	25,442
	100.0%	23.0%	38.3%	1.3%	0.2%	32.2%	0.4%	0.5%	4.2%
2	664,667	115,776	311,408	10,916	757	186,813	1,105	3,698	34,194
	100.0%	17.4%	46.9%	1.6%	0.1%	28.1%	0.2%	0.6%	5.1%
3	671,019	130,892	402,497	7,775	1,191	89,062	880	3,418	35,304
	100.0%	19.5%	60.0%	1.2%	0.2%	13.3%	0.1%	0.5%	5.3%
4	629,713	290,184	152,733	14,800	1,287	147,575	1,988	2,836	18,310
	100.0%	46.1%	24.3%	2.4%	0.2%	23.4%	0.3%	0.5%	2.9%
5	618,939	413,617	100,205	8,375	1,022	79,828	1,576	2,324	11,992
	100.0%	66.8%	16.2%	1.4%	0.2%	12.9%	0.3%	0.4%	1.9%
COUNTY TOTAL	3,193,010	1,090,281	1,200,128	49,943	5,325	699,267	7,737	15,087	125,242
	100.0%	34.1%	37.6%	1.6%	0.2%	21.9%	0.2%	0.5%	3.9%

**Table 2. Difference from 2021 Target Supervisorial District Population of 638,602**

District	Number	Percent	Percentage Spread (Largest - Smallest)
1	-29,930	-4.69%	9.76%
2	26,065	4.08%	
3	32,417	5.08%	
4	-8,889	-1.39%	
5	-19,663	-3.08%	

#### Split Cities/Census Designated Places (CDPs) -

Anaheim (3)  
 Garden Grove (2)  
 Laguna Hills (2)  
 Lake Forest (2)  
 North Tustin CDP (2)  
 Orange (2)  
 Tustin (3)

Percent shares calculated using unrounded numbers, but table displays only to tenths; therefore, percents displayed may not sum to 100%.

Number in ( ) indicates number of Supervisorial Districts the city/CDP falls within.

The U.S. Census Bureau misassigned three (3) census blocks to the City of Tustin that are actually in the City of Santa Ana with a total of 260 population. Since the affected area is fully assigned to District 5, no splits are created and no correction is necessary.

**PROPOSAL 5A**  
**County of Orange 2021 Redistricting**

**Table 3. Adjusted Citizen Voting Age Population (CVAP) by Race/Ethnicity, 2015-2019 5-Year Estimates**

District	Total Estimated CVAP	Hispanic or Latino of any Race	Non- Hispanic White	Non-Hispanic Black or African- American	Non-Hispanic American Indian or Alaska Native	Non- Hispanic Asian	Non-Hispanic Native Hawaiian or Other Pacific Islander	Non- Hispanic Two or More Races
<b>1</b>	433,147	73,545	211,298	7,074	1,161	127,291	1,284	10,297
	100.0%	17.0%	48.9%	1.6%	0.3%	29.5%	0.3%	2.4%
<b>2</b>	422,853	56,967	257,535	7,665	656	87,069	901	10,880
	100.0%	13.5%	61.1%	1.8%	0.2%	20.6%	0.2%	2.6%
<b>3</b>	483,754	69,835	337,988	6,886	753	56,206	592	11,250
	100.0%	14.4%	69.9%	1.4%	0.2%	11.6%	0.1%	2.3%
<b>4</b>	385,143	133,487	142,193	11,844	789	87,149	1,815	6,918
	100.0%	34.7%	37.0%	3.1%	0.2%	22.7%	0.5%	1.8%
<b>5</b>	340,779	177,081	97,547	6,086	574	53,677	975	3,708
	100.0%	52.1%	28.7%	1.8%	0.2%	15.8%	0.3%	1.1%
<b>COUNTY TOTAL</b>	2,065,676	510,915	1,046,561	39,555	3,933	411,392	5,567	43,053
	100.0%	24.8%	50.8%	1.9%	0.2%	20.0%	0.3%	2.1%

Source: Statewide Database 2015-2019 Citizen Voting Age Population, adjusted to reflect reallocated incarcerated persons, on 2020 Census Blocks, Revised 9/27/2021 <https://statewidedatabase.org/redistricting2021/counties.html>

Notes: Percentages are calculated from sum of individual categories, not Total Estimated CVAP.

Because this is a special tabulation of data and not part of the standard data products shown on the Census Bureau's data.census.gov website, these estimates are rounded. Therefore, individual categories may not exactly add to the total.

For example, the sum of each of the race groups for non-Hispanics may not be the same as the estimate given for non-Hispanics. These estimates will not match counts from the 2020 Census.

The original data source for the Citizen Voting Age Population (CVAP) is the American Community Survey (ACS). The ACS is an ongoing survey by the U.S. Census Bureau sent to approximately 250,000 households each month.

The ACS estimates used to develop these data were collected from January 1, 2015 to December 31, 2019 utilizing the 2010 Census block groups, which were disaggregated to the 2020 Census blocks by the Statewide Database.

For more information about the CVAP products, visit <https://www.census.gov/programs-surveys/decennial-census/about/voting-rights/cvap.html> and

[https://www2.census.gov/programs-surveys/decennial/rdo/technical-documentation/special-tabulation/CVAP\\_2015-2019\\_ACS\\_documentation.pdf](https://www2.census.gov/programs-surveys/decennial/rdo/technical-documentation/special-tabulation/CVAP_2015-2019_ACS_documentation.pdf)



**PROPOSAL 5A**  
**County of Orange 2021 Redistricting**

**Table 4. Adjusted 2020 Census Population by District and 2020 Census Place**

**DISTRICT 1**

Place	Total Population	Percent of District
Cypress	50,235	8.3%
Fountain Valley	57,120	9.4%
Garden Grove*	135,704	22.3%
Huntington Beach	199,033	32.7%
La Palma	15,597	2.6%
Los Alamitos	11,795	1.9%
Midway City CDP	8,845	1.5%
Rossmoor CDP	10,634	1.7%
Seal Beach	25,283	4.2%
Unincorporated	3,343	0.5%
Westminster	91,083	15.0%
<b>District 1 Total</b>	<b>608,672</b>	<b>100.0%</b>

**DISTRICT 2**

Place	Total Population	Percent of District
Aliso Viejo	52,222	7.9%
Costa Mesa	112,139	16.9%
Irvine	307,958	46.3%
Laguna Beach	23,061	3.5%
Laguna Hills*	16,901	2.5%
Laguna Woods	17,658	2.7%
Lake Forest*	16,406	2.5%
Newport Beach	85,338	12.8%
Tustin*	30,955	4.7%
Unincorporated	2,029	0.3%
<b>District 2 Total</b>	<b>664,667</b>	<b>100.0%</b>

**DISTRICT 3**

Place	Total Population	Percent of District
Anaheim*	56,099	8.4%
Coto de Caza CDP	14,723	2.2%
Dana Point	33,144	4.9%
Ladera Ranch CDP	26,188	3.9%
Laguna Hills*	14,498	2.2%
Laguna Niguel	64,417	9.6%
Lake Forest*	69,559	10.4%
Las Flores CDP	6,004	0.9%
Mission Viejo	93,760	14.0%
Modjeska CDP	632	0.1%
North Tustin CDP*	18,131	2.7%
Orange*	33,354	5.0%
Rancho Mission Viejo CDP	10,385	1.5%
Rancho Santa Margarita	48,000	7.2%
San Clemente	64,384	9.6%
San Juan Capistrano	35,271	5.3%
Silverado CDP	932	0.1%
Trabuco Canyon CDP	1,020	0.2%
Tustin*	0	0.0%
Unincorporated	6,160	0.9%
Villa Park	5,850	0.9%
Williams Canyon CDP	93	0.0%
Yorba Linda	68,415	10.2%
<b>District 3 Total</b>	<b>671,019</b>	<b>100.0%</b>

**DISTRICT 4**

Place	Total Population	Percent of District
Anaheim*	189,443	30.1%
Brea	47,397	7.5%
Buena Park	84,187	13.4%
Fullerton	143,930	22.9%
La Habra	63,234	10.0%
Placentia	51,925	8.2%
Stanton	38,067	6.0%
Unincorporated	11,530	1.8%
<b>District 4 Total</b>	<b>629,713</b>	<b>100.0%</b>

**DISTRICT 5**

Place	Total Population	Percent of District
Anaheim*	102,211	16.5%
Garden Grove*	36,642	5.9%
North Tustin CDP*	7,618	1.2%
Orange*	106,837	17.3%
Santa Ana	311,393	50.3%
Tustin*	49,457	8.0%
Unincorporated	4,781	0.8%
<b>District 5 Total</b>	<b>618,939</b>	<b>100.0%</b>

\*City/CDP split by proposed district.

Percent shares calculated using unrounded numbers, but table displays only to tenths; therefore, percents displayed may not sum to 100%.

**PROPOSAL 5A**  
**County of Orange 2021 Redistricting**

**Table 5. Adjusted 2020 Census Population 18 Years and Over by Race/Ethnicity**

District	Total Population 18 and Over	Hispanic or Latino of any Race	Non- Hispanic White	Non- Hispanic Black or African- American	Non-Hispanic American Indian or Alaska Native	Non- Hispanic Asian	Non-Hispanic Native Hawaiian or Other Pacific Islander	Non- Hispanic Some Other Race	Non- Hispanic Two or More Races
<b>1</b>	492,851	101,722	201,837	6,649	934	160,998	1,775	2,208	16,728
	100.0%	20.6%	41.0%	1.3%	0.2%	32.7%	0.4%	0.4%	3.4%
<b>2</b>	536,073	87,002	265,986	9,094	606	147,476	865	2,743	22,301
	100.0%	16.2%	49.6%	1.7%	0.1%	27.5%	0.2%	0.5%	4.2%
<b>3</b>	531,019	93,263	333,319	6,530	1,015	71,893	725	2,525	21,749
	100.0%	17.6%	62.8%	1.2%	0.2%	13.5%	0.1%	0.5%	4.1%
<b>4</b>	491,691	208,051	133,272	12,057	1,082	121,344	1,598	2,052	12,235
	100.0%	42.3%	27.1%	2.5%	0.2%	24.7%	0.3%	0.4%	2.5%
<b>5</b>	474,045	297,479	88,989	7,137	865	68,152	1,241	1,602	8,580
	100.0%	62.8%	18.8%	1.5%	0.2%	14.4%	0.3%	0.3%	1.8%
<b>COUNTY TOTAL</b>	2,525,679	787,517	1,023,403	41,467	4,502	569,863	6,204	11,130	81,593
	100.0%	31.2%	40.5%	1.6%	0.2%	22.6%	0.2%	0.4%	3.2%

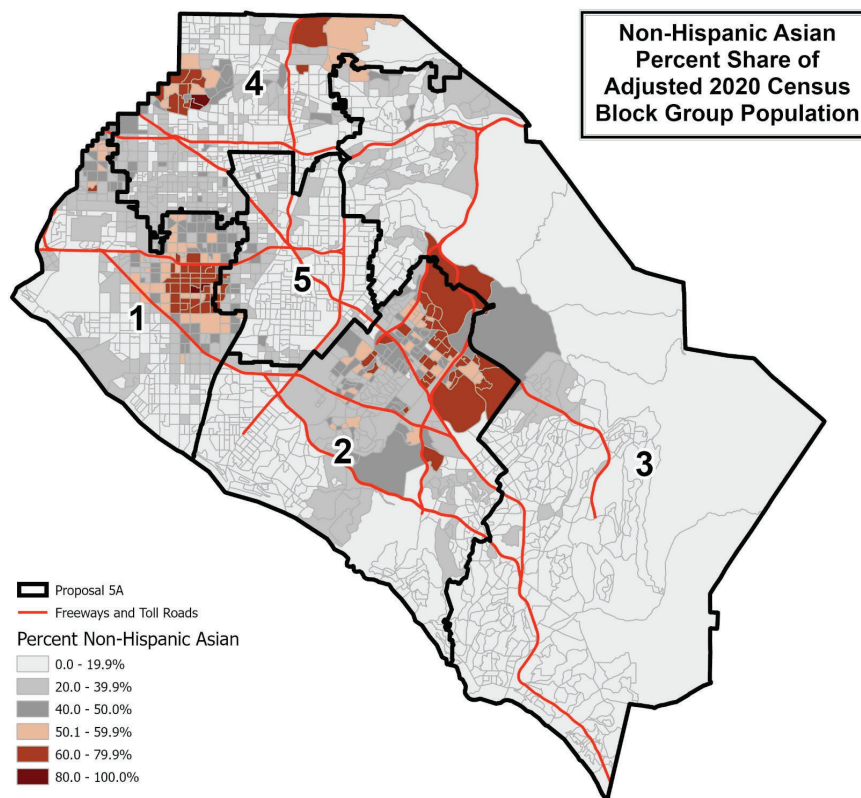
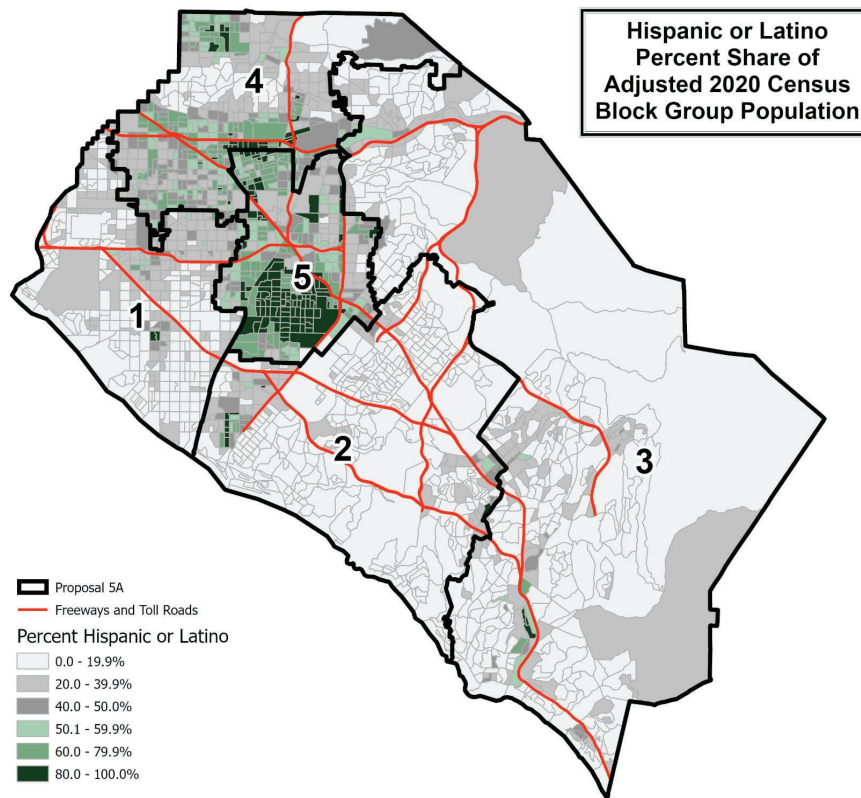
Percent shares calculated using unrounded numbers, but table displays only to tenths; therefore, percents displayed may not sum to 100%.

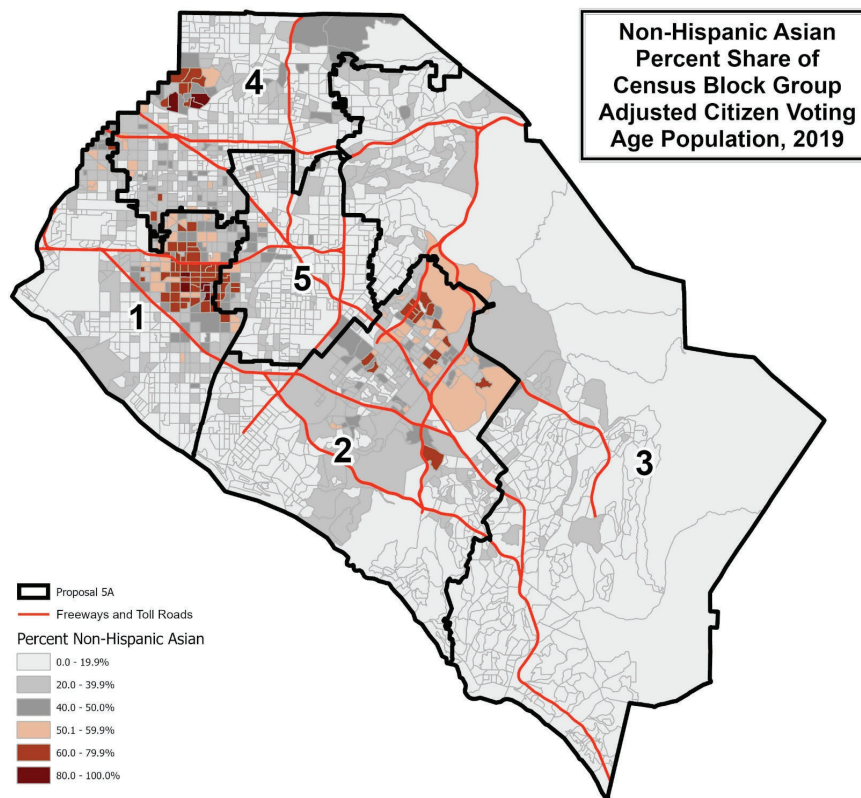
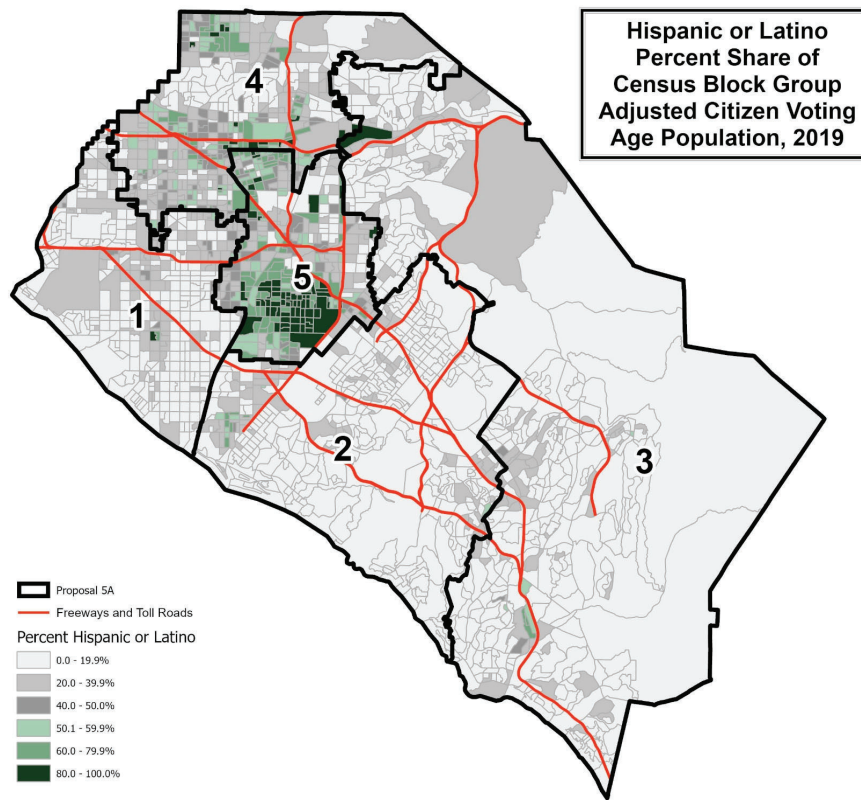
Source: Statewide Database; Adjusted, incarcerated persons reallocated P.L. 94-171 2020 Redistricting Data, Revised 9/27/2021

## **PROPOSAL 5A**

Contact Name: LaShe Rodriguez  
Organization: BOS-District 4  
Submitted Description: "Deviation off in D.1,3,5

Plan Objectives  
To keep communities of interest intact."

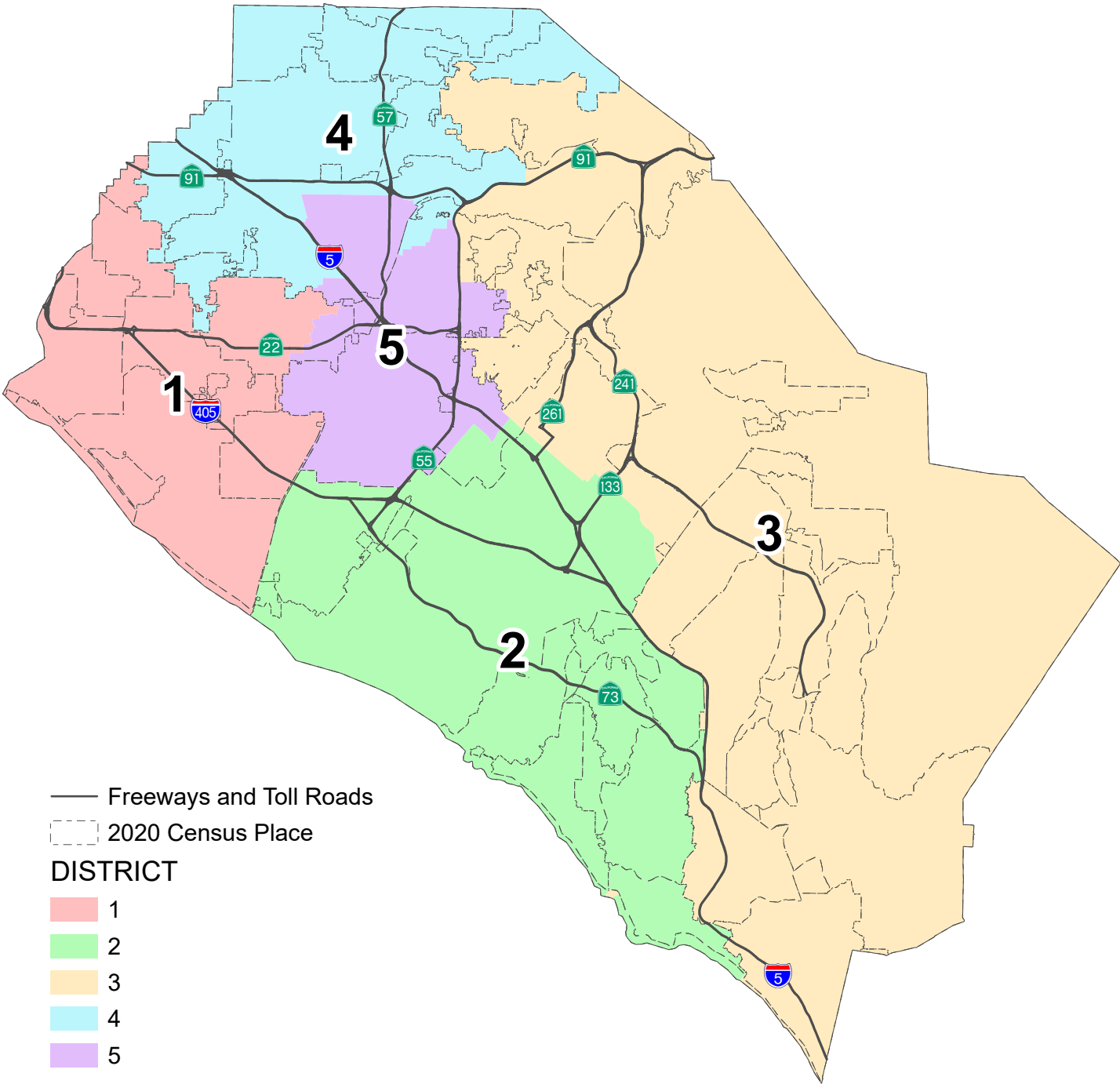




This page is intentionally left blank

County of Orange 2021 Redistricting

Proposal 5B Map



This page is intentionally left blank



## PROPOSAL 5B

### County of Orange 2021 Redistricting

**Table 1. Adjusted 2020 Census Total Population by Race/Ethnicity**

District	Total Population	Hispanic or Latino of any Race	Non-Hispanic White	Non-Hispanic Black or African-American	Non-Hispanic American Indian or Alaska Native	Non-Hispanic Asian	Non-Hispanic Native Hawaiian or Other Pacific Islander	Non-Hispanic Some Other Race	Non-Hispanic Two or More Races
1	609,950	140,330	233,495	8,100	1,071	196,491	2,192	2,811	25,460
	100.0%	23.0%	38.3%	1.3%	0.2%	32.2%	0.4%	0.5%	4.2%
2	663,910	118,547	352,230	10,597	871	142,154	1,103	3,776	34,632
	100.0%	17.9%	53.1%	1.6%	0.1%	21.4%	0.2%	0.6%	5.2%
3	670,176	126,681	362,579	7,975	1,043	132,839	878	3,314	34,867
	100.0%	18.9%	54.1%	1.2%	0.2%	19.8%	0.1%	0.5%	5.2%
4	640,323	291,323	159,011	14,987	1,347	149,780	1,999	2,878	18,998
	100.0%	45.5%	24.8%	2.3%	0.2%	23.4%	0.3%	0.4%	3.0%
5	608,651	413,400	92,813	8,284	993	78,003	1,565	2,308	11,285
	100.0%	67.9%	15.2%	1.4%	0.2%	12.8%	0.3%	0.4%	1.9%
COUNTY TOTAL	3,193,010	1,090,281	1,200,128	49,943	5,325	699,267	7,737	15,087	125,242
	100.0%	34.1%	37.6%	1.6%	0.2%	21.9%	0.2%	0.5%	3.9%

**Table 2. Difference from 2021 Target Supervisorial District Population of 638,602**

District	Number	Percent	Percentage Spread (Largest - Smallest)
1	-28,652	-4.49%	9.63%
2	25,308	3.96%	
3	31,574	4.94%	
4	1,721	0.27%	
5	-29,951	-4.69%	

#### Split Cities/Census Designated Places (CDPs) -

Anaheim (3)  
 Garden Grove (2)  
 Irvine (2)  
 Mission Viejo (2)  
 Orange (3)  
 Tustin (3)

Percent shares calculated using unrounded numbers, but table displays only to tenths; therefore, percents displayed may not sum to 100%.

Number in ( ) indicates number of Supervisorial Districts the city/CDP falls within.

The U.S. Census Bureau misassigned three (3) census blocks to the City of Tustin that are actually in the City of Santa Ana with a total of 260 population. Since the affected area is fully assigned to District 5, no splits are created and no correction is necessary.

**PROPOSAL 5B**  
**County of Orange 2021 Redistricting**

**Table 3. Adjusted Citizen Voting Age Population (CVAP) by Race/Ethnicity, 2015-2019 5-Year Estimates**

District	Total Estimated CVAP	Hispanic or Latino of any Race	Non- Hispanic White	Non-Hispanic Black or African- American	Non-Hispanic American Indian or Alaska Native	Non- Hispanic Asian	Non-Hispanic Native Hawaiian or Other Pacific Islander	Non- Hispanic Two or More Races
<b>1</b>	434,168	73,835	211,585	7,090	1,161	127,765	1,284	10,312
	100.0%	17.1%	48.9%	1.6%	0.3%	29.5%	0.3%	2.4%
<b>2</b>	449,199	59,702	295,330	8,095	559	71,882	904	11,696
	100.0%	13.3%	65.9%	1.8%	0.1%	16.0%	0.2%	2.6%
<b>3</b>	457,316	66,402	301,175	6,427	856	71,156	599	10,312
	100.0%	14.5%	65.9%	1.4%	0.2%	15.6%	0.1%	2.3%
<b>4</b>	392,835	133,933	148,026	11,995	814	88,338	1,731	7,147
	100.0%	34.2%	37.8%	3.1%	0.2%	22.5%	0.4%	1.8%
<b>5</b>	332,158	177,043	90,445	5,948	543	52,251	1,049	3,586
	100.0%	53.5%	27.3%	1.8%	0.2%	15.8%	0.3%	1.1%
<b>COUNTY TOTAL</b>	2,065,676	510,915	1,046,561	39,555	3,933	411,392	5,567	43,053
	100.0%	24.8%	50.8%	1.9%	0.2%	20.0%	0.3%	2.1%

Source: Statewide Database 2015-2019 Citizen Voting Age Population, adjusted to reflect reallocated incarcerated persons, on 2020 Census Blocks, Revised 9/27/2021 <https://statewidedatabase.org/redistricting2021/counties.html>

Notes: Percentages are calculated from sum of individual categories, not Total Estimated CVAP.

Because this is a special tabulation of data and not part of the standard data products shown on the Census Bureau's data.census.gov website, these estimates are rounded. Therefore, individual categories may not exactly add to the total.

For example, the sum of each of the race groups for non-Hispanics may not be the same as the estimate given for non-Hispanics. These estimates will not match counts from the 2020 Census.

The original data source for the Citizen Voting Age Population (CVAP) is the American Community Survey (ACS). The ACS is an ongoing survey by the U.S. Census Bureau sent to approximately 250,000 households each month.

The ACS estimates used to develop these data were collected from January 1, 2015 to December 31, 2019 utilizing the 2010 Census block groups, which were disaggregated to the 2020 Census blocks by the Statewide Database.

For more information about the CVAP products, visit <https://www.census.gov/programs-surveys/decennial-census/about/voting-rights/cvap.html> and

[https://www2.census.gov/programs-surveys/decennial/rdo/technical-documentation/special-tabulation/CVAP\\_2015-2019\\_ACS\\_documentation.pdf](https://www2.census.gov/programs-surveys/decennial/rdo/technical-documentation/special-tabulation/CVAP_2015-2019_ACS_documentation.pdf)

**PROPOSAL 5B**  
**County of Orange 2021 Redistricting**

**Table 4. Adjusted 2020 Census Population by District and 2020 Census Place**

**DISTRICT 1**

Place	Total Population	Percent of District
Cypress	50,235	8.2%
Fountain Valley	57,120	9.4%
Garden Grove*	136,982	22.5%
Huntington Beach	199,033	32.6%
La Palma	15,597	2.6%
Los Alamitos	11,795	1.9%
Midway City CDP	8,845	1.5%
Rossmoor CDP	10,634	1.7%
Seal Beach	25,283	4.1%
Unincorporated	3,343	0.5%
Westminster	91,083	14.9%
<b>District 1 Total</b>	<b>609,950</b>	<b>100.0%</b>

**DISTRICT 2**

Place	Total Population	Percent of District
Aliso Viejo	52,222	7.9%
Costa Mesa	112,139	16.9%
Dana Point	33,144	5.0%
Irvine*	229,401	34.6%
Laguna Beach	23,061	3.5%
Laguna Hills	31,399	4.7%
Laguna Niguel	64,417	9.7%
Laguna Woods	17,658	2.7%
Mission Viejo*	0	0.0%
Newport Beach	85,338	12.9%
Tustin*	13,106	2.0%
Unincorporated	2,025	0.3%
<b>District 2 Total</b>	<b>663,910</b>	<b>100.0%</b>

**DISTRICT 3**

Place	Total Population	Percent of District
Anaheim*	46,881	7.0%
Coto de Caza CDP	14,723	2.2%
Irvine*	78,557	11.7%
Ladera Ranch CDP	26,188	3.9%
Lake Forest	85,965	12.8%
Las Flores CDP	6,004	0.9%
Mission Viejo*	93,760	14.0%
Modjeska CDP	632	0.1%
North Tustin CDP	25,749	3.8%
Orange*	33,354	5.0%
Rancho Mission Viejo CDP	10,385	1.5%
Rancho Santa Margarita	48,000	7.2%
San Clemente	64,384	9.6%
San Juan Capistrano	35,271	5.3%
Silverado CDP	932	0.1%
Trabuco Canyon CDP	1,020	0.2%
Tustin*	17,849	2.7%
Unincorporated	6,164	0.9%
Villa Park	5,850	0.9%
Williams Canyon CDP	93	0.0%
Yorba Linda	68,415	10.2%
<b>District 3 Total</b>	<b>670,176</b>	<b>100.0%</b>

**DISTRICT 4**

Place	Total Population	Percent of District
Anaheim*	188,501	29.4%
Brea	47,397	7.4%
Buena Park	84,187	13.1%
Fullerton	143,930	22.5%
La Habra	63,234	9.9%
Orange*	11,063	1.7%
Placentia	51,925	8.1%
Stanton	38,067	5.9%
Unincorporated	12,019	1.9%
<b>District 4 Total</b>	<b>640,323</b>	<b>100.0%</b>

**DISTRICT 5**

Place	Total Population	Percent of District
Anaheim*	112,371	18.5%
Garden Grove*	35,364	5.8%
Orange*	95,774	15.7%
Santa Ana	311,393	51.2%
Tustin*	49,457	8.1%
Unincorporated	4,292	0.7%
<b>District 5 Total</b>	<b>608,651</b>	<b>100.0%</b>

\*City split by proposed district.

Percent shares calculated using unrounded numbers, but table displays only to tenths; therefore, percents displayed may not sum to 100%.

**PROPOSAL 5B**  
**County of Orange 2021 Redistricting**

**Table 5. Adjusted 2020 Census Population 18 Years and Over by Race/Ethnicity**

District	Total Population 18 and Over	Hispanic or Latino of any Race	Non- Hispanic White	Non- Hispanic Black or African- American	Non-Hispanic American Indian or Alaska Native	Non- Hispanic Asian	Non-Hispanic Native Hawaiian or Other Pacific Islander	Non- Hispanic Some Other Race	Non- Hispanic Two or More Races
<b>1</b>	493,894	102,097	202,026	6,671	937	161,436	1,779	2,208	16,740
	100.0%	20.7%	40.9%	1.4%	0.2%	32.7%	0.4%	0.4%	3.4%
<b>2</b>	543,749	89,258	301,919	8,939	709	115,903	849	2,838	23,334
	100.0%	16.4%	55.5%	1.6%	0.1%	21.3%	0.2%	0.5%	4.3%
<b>3</b>	522,153	89,982	298,146	6,590	875	102,727	734	2,414	20,685
	100.0%	17.2%	57.1%	1.3%	0.2%	19.7%	0.1%	0.5%	4.0%
<b>4</b>	500,127	208,850	138,425	12,215	1,138	123,134	1,603	2,085	12,677
	100.0%	41.8%	27.7%	2.4%	0.2%	24.6%	0.3%	0.4%	2.5%
<b>5</b>	465,756	297,330	82,887	7,052	843	66,663	1,239	1,585	8,157
	100.0%	63.8%	17.8%	1.5%	0.2%	14.3%	0.3%	0.3%	1.8%
<b>COUNTY TOTAL</b>	2,525,679	787,517	1,023,403	41,467	4,502	569,863	6,204	11,130	81,593
	100.0%	31.2%	40.5%	1.6%	0.2%	22.6%	0.2%	0.4%	3.2%

Percent shares calculated using unrounded numbers, but table displays only to tenths; therefore, percents displayed may not sum to 100%.

Source: Statewide Database; Adjusted, incarcerated persons reallocated P.L. 94-171 2020 Redistricting Data, Revised 9/27/2021

## **PROPOSAL 5B**

Contact Name: Tara Campbell  
Organization: Board of Supervisors, Third District  
Submitted Description: "To keep communities of interest together."

